

NORTH ATTLEBORO MARKETPLACE

1360 SOUTH WASHINGTON STREET • NORTH ATTLEBORO, MASSACHUSETTS



LOCATION

Prominently located on U.S. Route 1 (South Washington Street) with heavy daily traffic and excellent regional connectivity, offering strong brand visibility and easy access via nearby I-95 and I-295 for customers traveling throughout Massachusetts and Rhode Island.



NEARBY

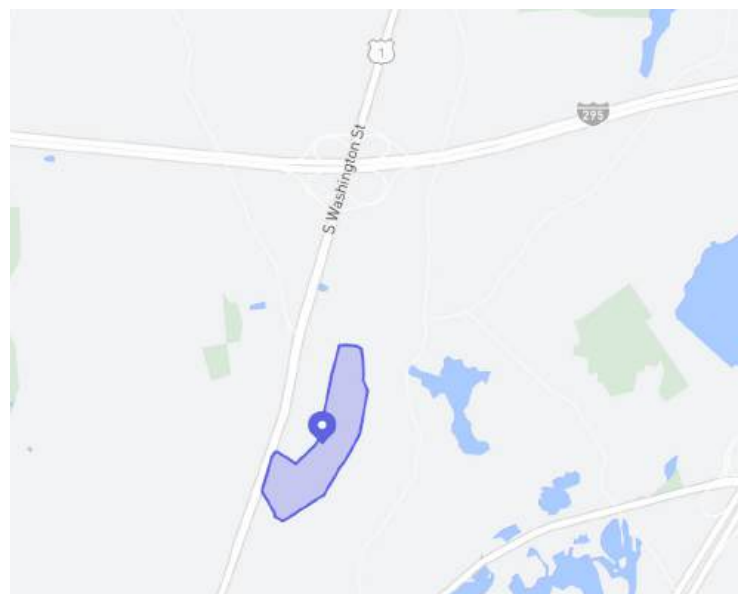
Emerald Square (Macy's, JC Penney), Target, Savers, Michaels, Pet Smart, BJ's Wholesale Club, Stop & Shop, Burlington, Petco, Staples

Shares access with Panera Bread, Longhorn, Old Navy, Marshalls, Five Below



SPACE (GLA)

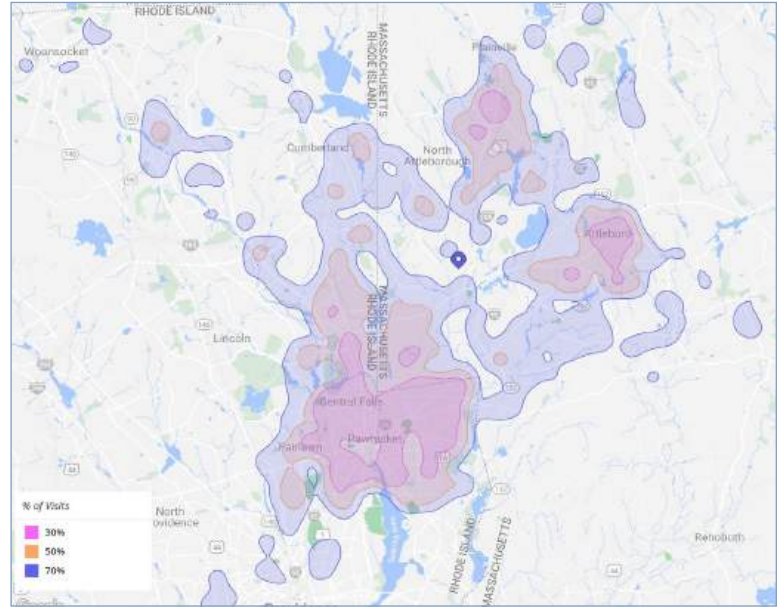
522,254 SF



LOCATION & DEMOGRAPHICS

LAT/LON		PARKING	
41.940906/-71.3467605		2,304	
TRAFFIC COUNT		CARS/DAY	
Route 1		24,000	
Route 95		102,000	
Route 295		54,000	
2025	1-MILE	3-MILE	5-MILE
<i>Estimated Population</i>	1,996	47,309	191,737
<i>Estimated Avg. HH Income</i>	\$182,221	\$134,002	\$114,718

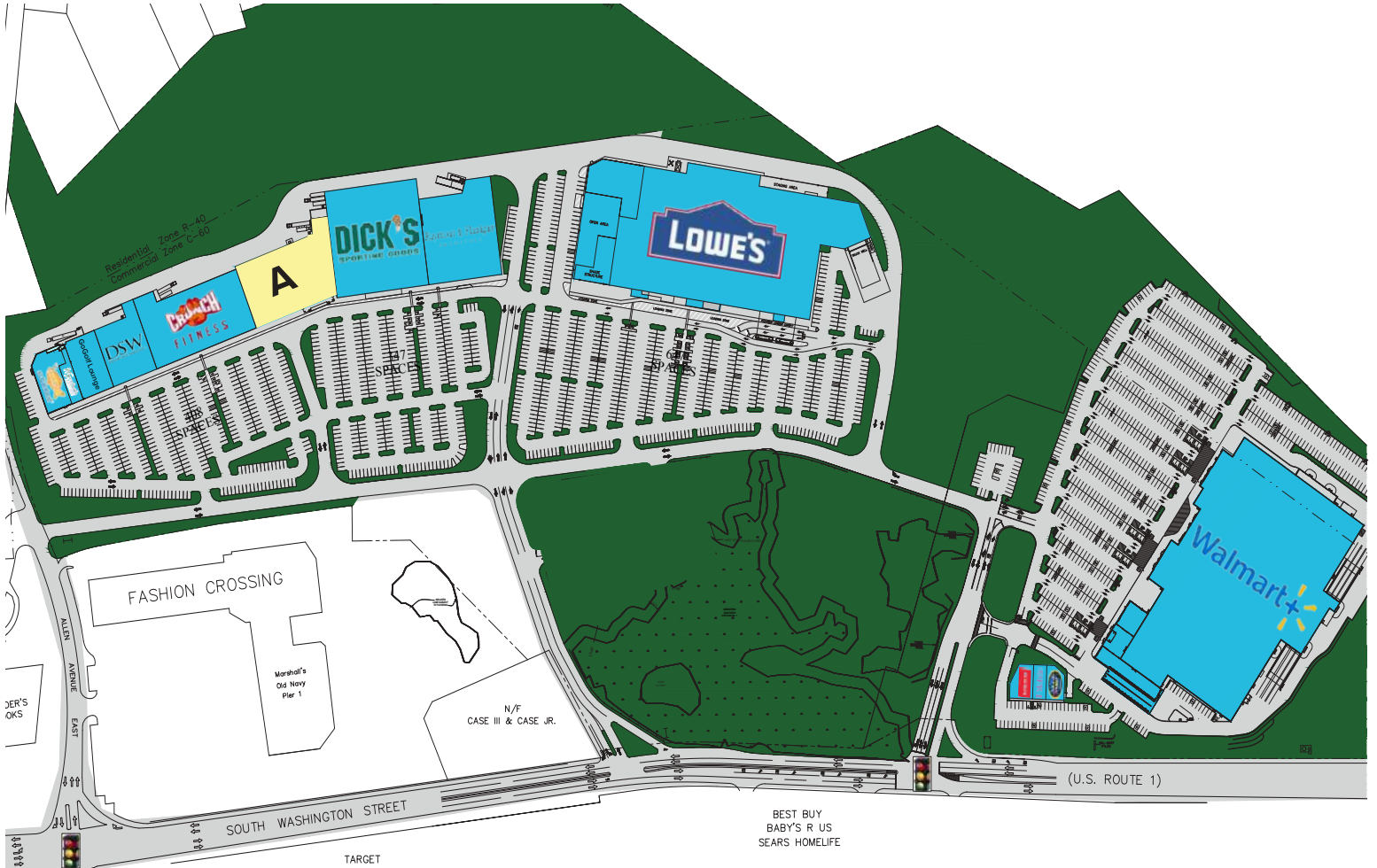
TRUE TRADE AREA



TRADE MAP



SITE PLAN



TENANTS	
	SQUARE FEET
Retail A	32,000 SF
GoGolf Lounge	10,010 SF
Crunch Fitness	35,000 SF
Ivy Rehab	2,711 SF
Raymour & Flanigan Outlet Store	33,892 SF
GoldFish Swim School	8,514 SF
DSW	15,000 SF
Dick's Sporting Goods	50,025 SF
Lowe's	140,000 SF
Wal-Mart Supercenter	186,292 SF
Blinds To Go	3,502 SF
T-Mobile	2,294 SF
Vitamin Shoppe	3,014 SF

AVAILABLE SPACE

PROPOSED



RETAIL A



1414 Atwood Avenue • Johnston, RI • 02919 • 401.273.6800 • www.CarpionatoGroup.com



FOR MORE INFORMATION, CONTACT:

Peter Flynn • 401.273.6800 x141 • PFlynn@CarpionatoGroup.com

Joe Pierik • 401.273.6800 x126 • JPierik@CarpionatoGroup.com