

MAIN STREET MEDICAL PLAZA

5858 W Main St
Frisco, TX 75033

Medical Office For Lease

3,889 - 4,947 SF



Leasing Information:
214.461.2388

Lincoln

Peter Shaw 214.461.2302 PShaw@lpc.com	Banks Newton 214.461.2388 bnewton@lpc.com	Elizabeth Madden 214.461.2366 emadden@lpc.com
--	--	--

8140 Walnut Hill Lane
Suite 700
Dallas, TX 75231

www.lpc.com

MAIN STREET MEDICAL PLAZA

5858 W Main St | Frisco, TX 75033

Medical Office For Lease

3,889 - 4,947 SF



Property Overview

Introducing Main Street Medical Plaza, a versatile property for lease that offers a superior corner location at Main Street and the Dallas North Tollway, providing high visibility and accessibility to prospective tenants. The customizable suites come with a generous tenant improvement allowance, allowing practices to create tailored spaces to suit their needs. Additionally, the property presents a building signage opportunity on Main Street, ensuring prominent visibility. With ample parking and proximity to major health systems, this property offers an exceptional opportunity for Physicians seeking a prime location with unparalleled exposure.

Property Highlights

- Superior corner location at Main Street and the Dallas N Tollway
- Customizable suites with generous tenant improvement allowance
- Building signage opportunity on Main Street
- Ample parking
- High visibility and accessibility
- Proximity to Major Health Systems

Availabilities

Suite 200	3,889 SF
Suite 300	4,947 SF

Peter Shaw **Banks Newton** **Elizabeth Madden**

214.461.2302 214.461.2388 214.461.2366
PShaw@lpc.com bnewton@lpc.com emadden@lpc.com

Lincoln

MAIN STREET MEDICAL PLAZA

5858 W Main St | Frisco, TX 75033

Medical Office For Lease

3,889 - 4,947 SF



Demographics	1 Mile	2 Miles	3 Miles
Total Households	2,189	13,866	31,390
Total Population	4,636	37,231	86,885
Average HH Income	\$110,798	\$136,329	\$148,405



Peter Shaw **Banks Newton** **Elizabeth Madden**
 214.461.2302 214.461.2388 214.461.2366
 PShaw@lpc.com bnewton@lpc.com emadden@lpc.com

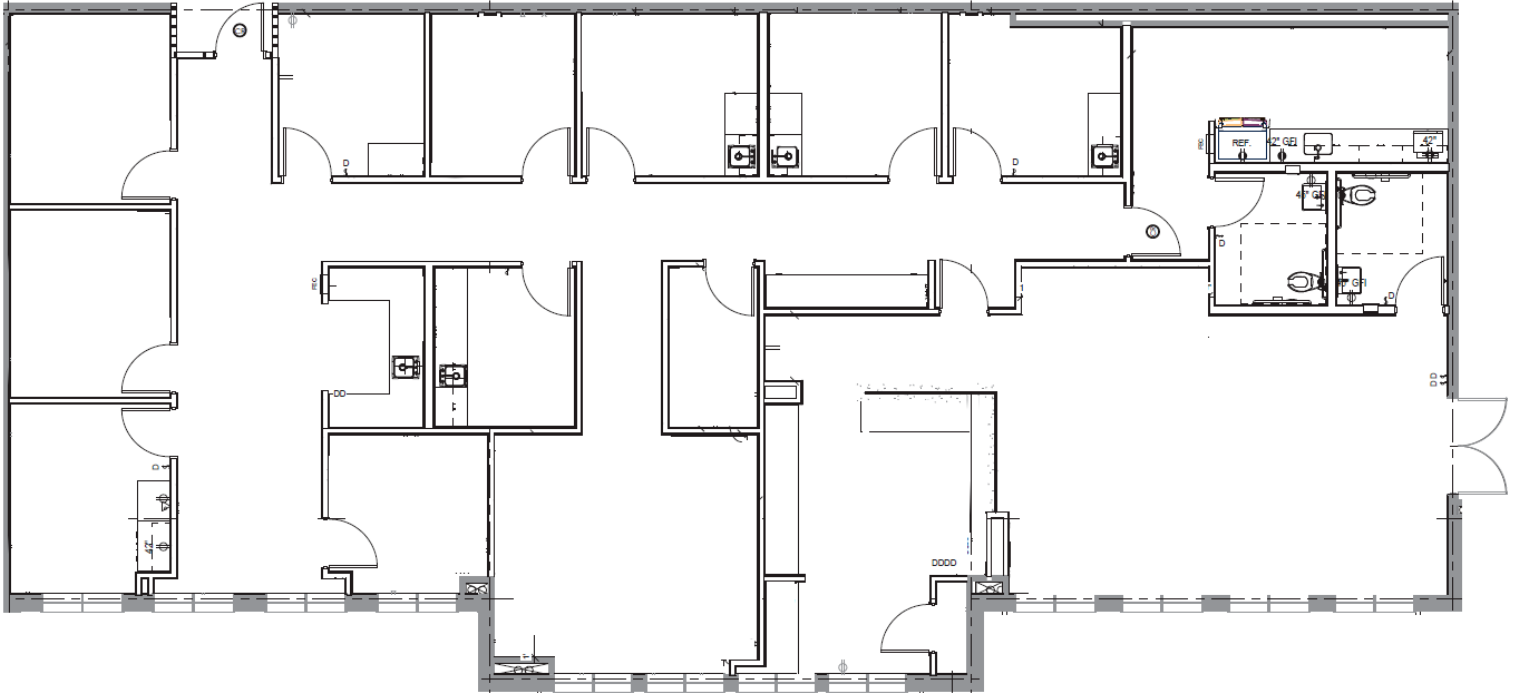
Lincoln

MAIN STREET MEDICAL PLAZA

5858 W Main St | Frisco, TX 75033

Suite 200

3,889 SF



Suite

Suite 200

Size

3,889 SF

Peter Shaw

214.461.2302
PShaw@lpc.com

Banks Newton

214.461.2388
bnewton@lpc.com

Elizabeth Madden

214.461.2366
emadden@lpc.com

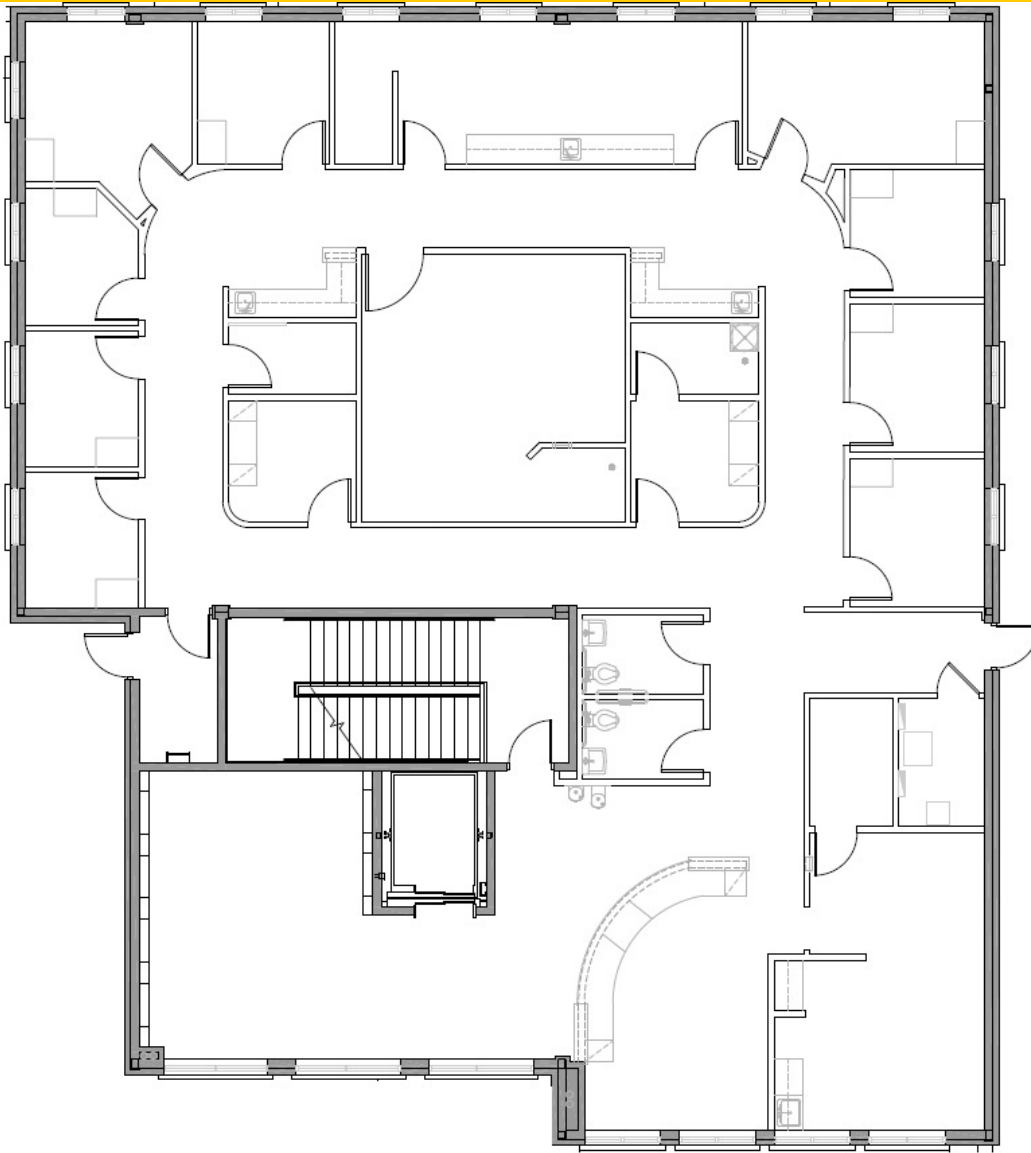
Lincoln

MAIN STREET MEDICAL PLAZA

5858 W Main St | Frisco, TX 75033

Suite 300

4,947 SF



Suite

Suite 300

Size

4,947 SF

Peter Shaw

214.461.2302
PShaw@lpc.com

Banks Newton

214.461.2388
bnewton@lpc.com

Elizabeth Madden

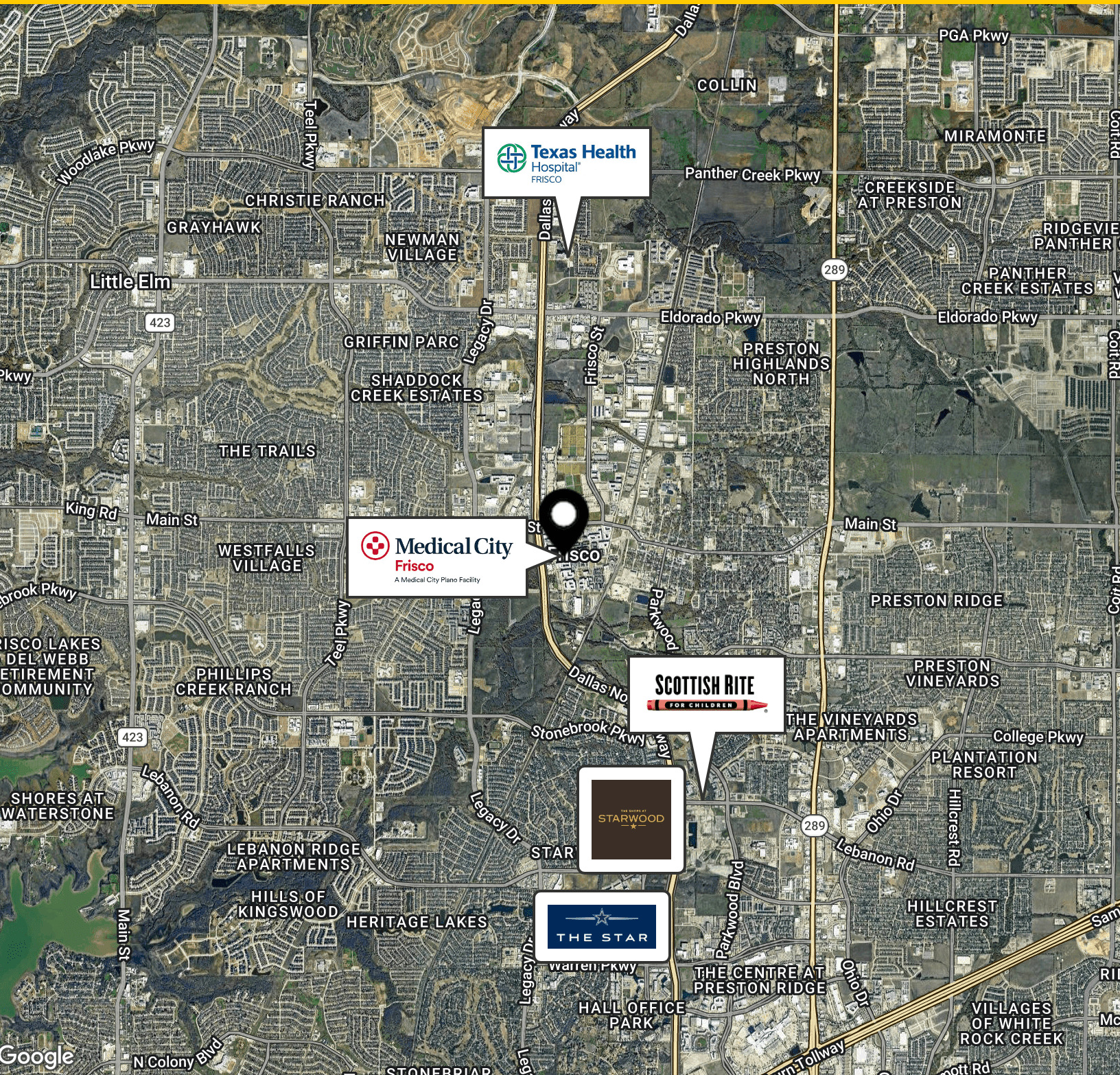
214.461.2366
emadden@lpc.com

Lincoln

MAIN STREET MEDICAL PLAZA

Nearby Amenities

5858 W Main St | Frisco, TX 75033



Peter Shaw

214.461.2302
PShaw@lpc.com

Banks Newton

214.461.2388
bnewton@lpc.com

Elizabeth Madden

214.461.2366
emadden@lpc.com

Lincoln



MAIN STREET MEDICAL PLAZA

5858 W Main St
Frisco, TX 75033

Leasing Information:
214.461.2388

Peter Shaw
214.461.2302
PShaw@lpc.com

Banks Newton
214.461.2388
bnewton@lpc.com

Elizabeth Madden
214.461.2366
emadden@lpc.com

Lincoln

8140 Walnut Hill Lane
Suite 700
Dallas, TX 75231

www.lpc.com