

8565 W 135th St
Overland Park, KS 66221

Ground Lease or BTS

Drive Thru Opportunity

- Site is already approved for drive through
- 57K Combined Traffic count at 135th and Antioch intersection
- Out lot to movie theater
- Nearby high school, sports complex, daily needs shopping
- High income, high growth area in Johnson County

Jayme Miller

Vice President

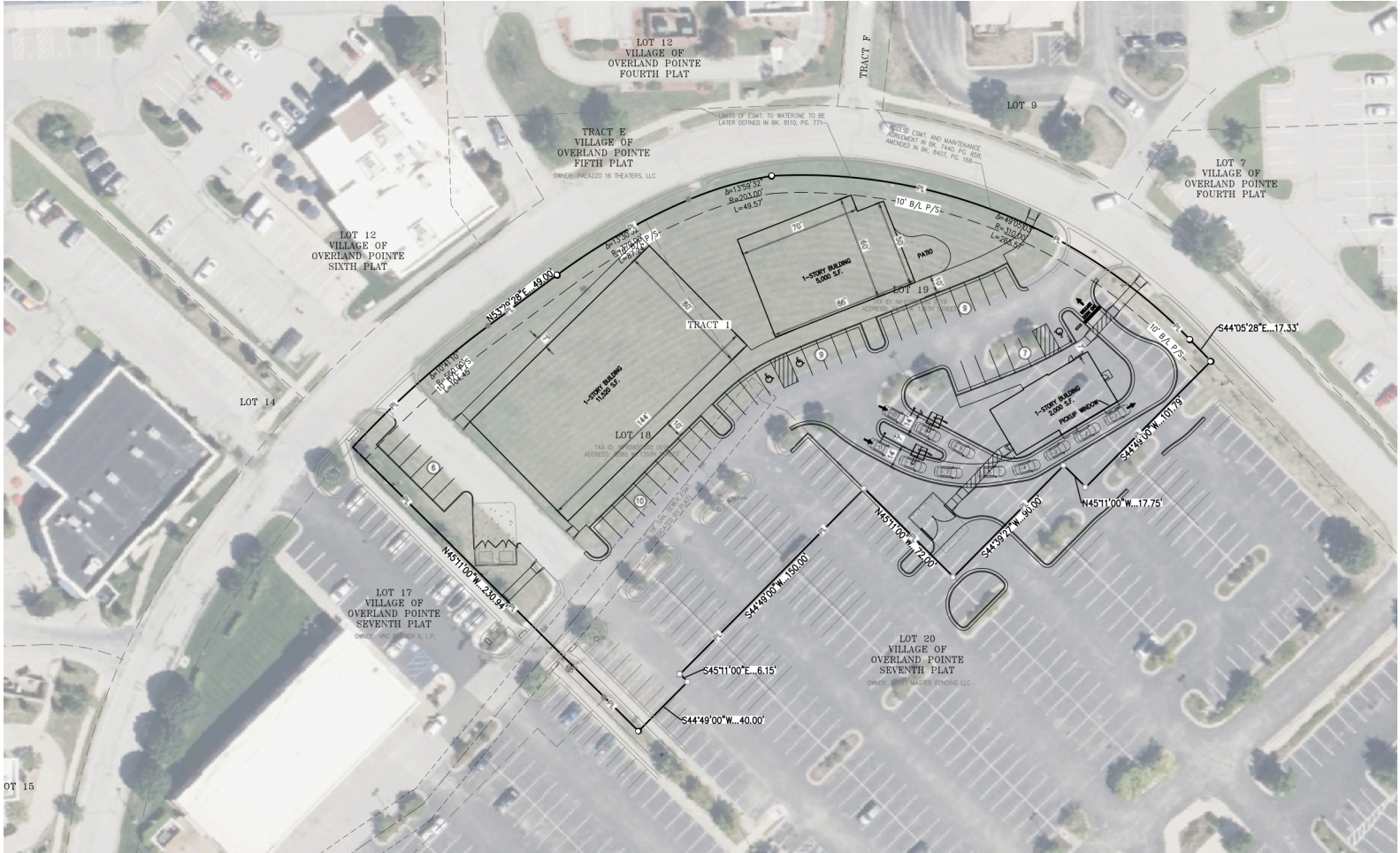
jayme.miller@jll.com

+1 816 261 2006

jll.com/kansas-city

Jones Lang LaSalle Brokerage, Inc.

Site plan



8565 W 135th St, Overland Park, KS 66211
 Surrounding Area & Demographics



Average household income		
1-mile	3-miles	5-miles
\$152,079	\$168,903	\$166,347

Estimated population		
1-mile	3-miles	5-miles
11,175	95,498	212,434

Jayne Miller
 Vice President
 jayne.miller@jll.com
 +1 816 261 2006

jll.com/kansas-city
 Jones Lang LaSalle Brokerage, Inc.