

FOR LEASE

11840 Mapleville Road

Smithsburg, MD 21783

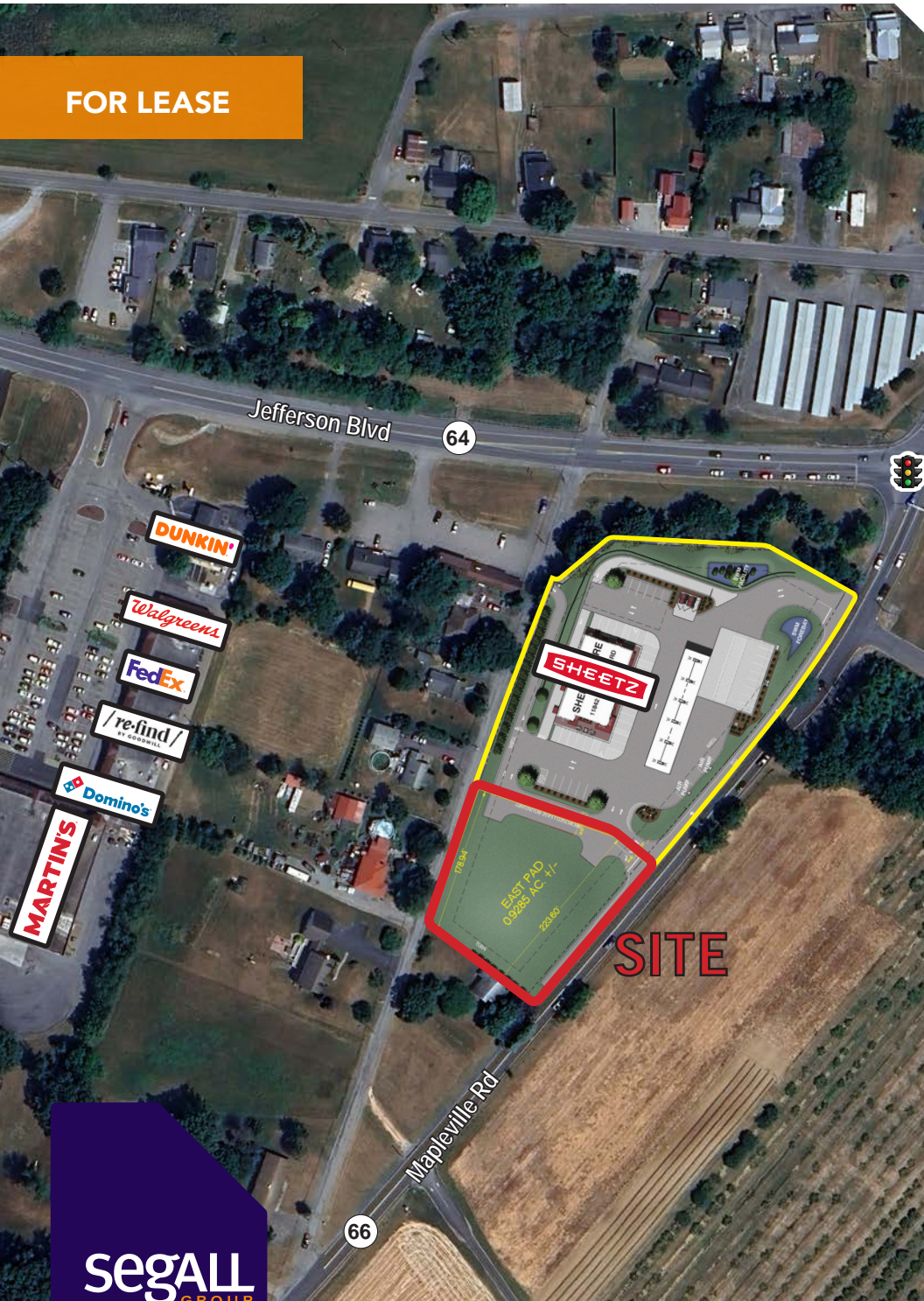
Overview

0.9285-acre commercial property at signalized corner of Jefferson Boulevard and Mapleville Road. Fast-growing and underserved area of Washington County. Adjacent to new proposed Sheetz store.

Located along MD-66, a major commuter route to I-70.

Quick Facts

Availability Immediate
Size 0.9285 acres
Rental Rate Negotiable
Net Charges TBD
Nearby Tenants

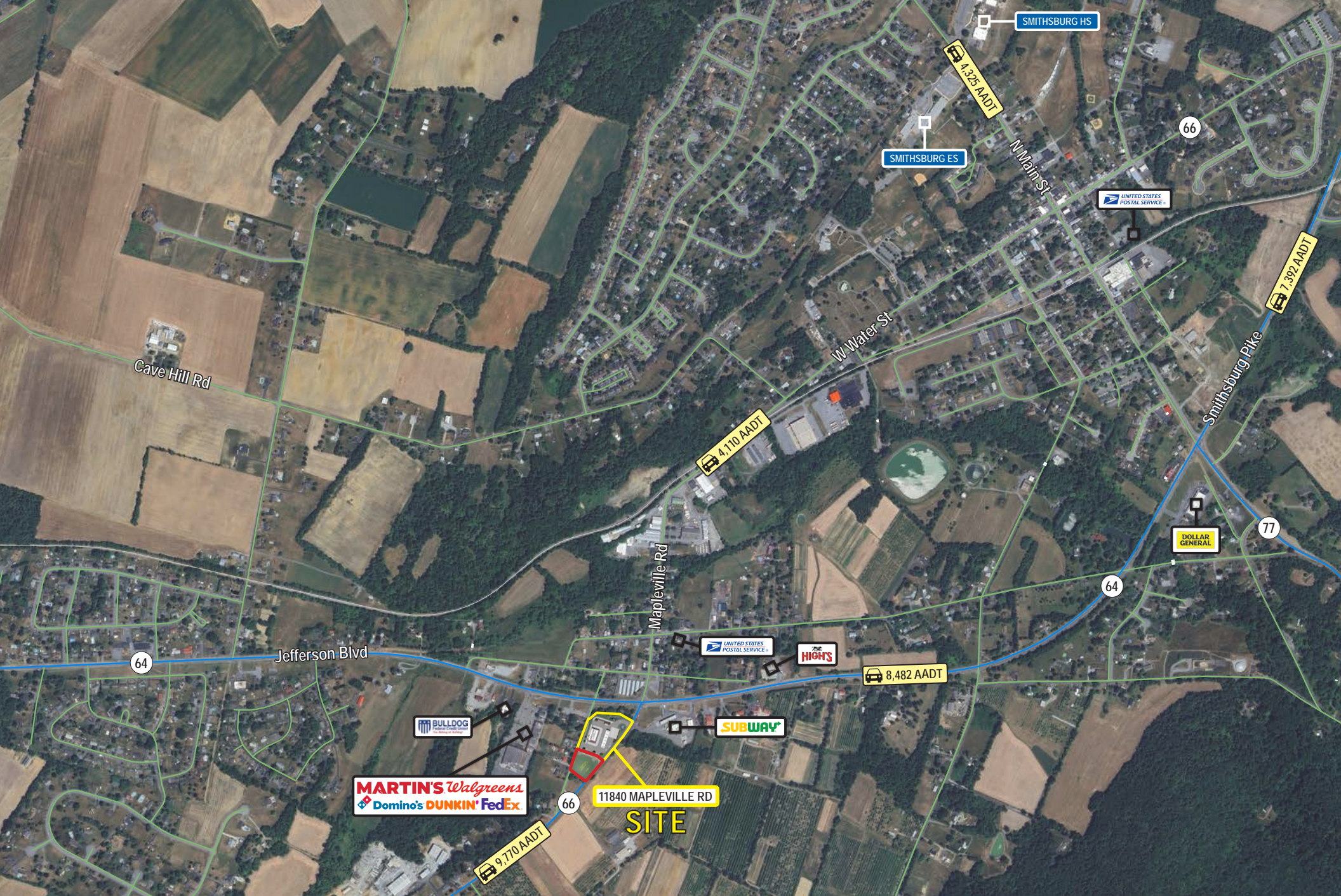


2025 Demographics	1 mile	3 miles	5 miles
POPULATION	1,642	8,254	22,308
HOUSEHOLDS	610	3,000	8,412
AVG. HH INCOME	\$102,849	\$120,006	\$123,549
DAYTIME POPULATION	1,293	7,168	24,878
TRAFFIC COUNT	9,770 AADT (Mapleville Rd)	8,482 AADT (Jefferson Blvd)	

segALL
GROUP

COMMERCIAL REAL ESTATE






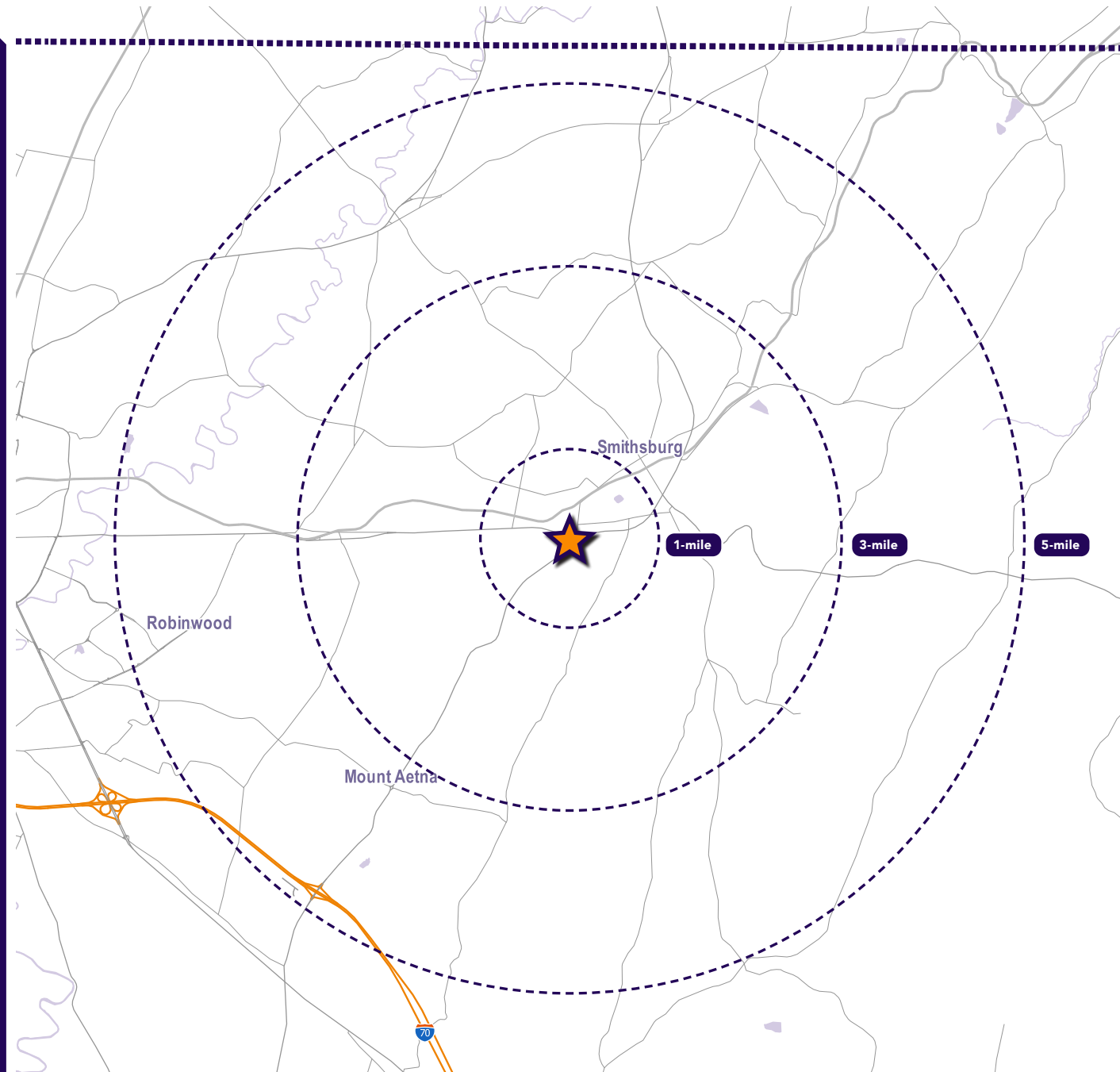
Interested? Contact:

Andrew Segall

 asegall@segallgroup.com

 410.753.3947

 410.960.0361



Maryland

605 South Eden Street
Suite 200
Baltimore, MD 21231
410.753.3000

DC • Northern VA

8245 Boone Boulevard
Suite 200
Tysons, VA 22182
202.833.3830

Richmond

4701 Cox Road
Suite 100
Glen Allen, VA 23060
804.207.4040

Online

www.segallgroup.com

Member of


**RETAIL
READY.**

segall
GROUP