

Turnkey office opportunity for retail brand, media, or creative

savills

FOR SUBLEASE 1640 S Sepulveda Blvd. Los Angeles, CA 90025



SPACE PROFILE

10,618 SF

Total SF

9/30/2029

Term

4.00/1,000

Parking spaces

\$3.95 FSG

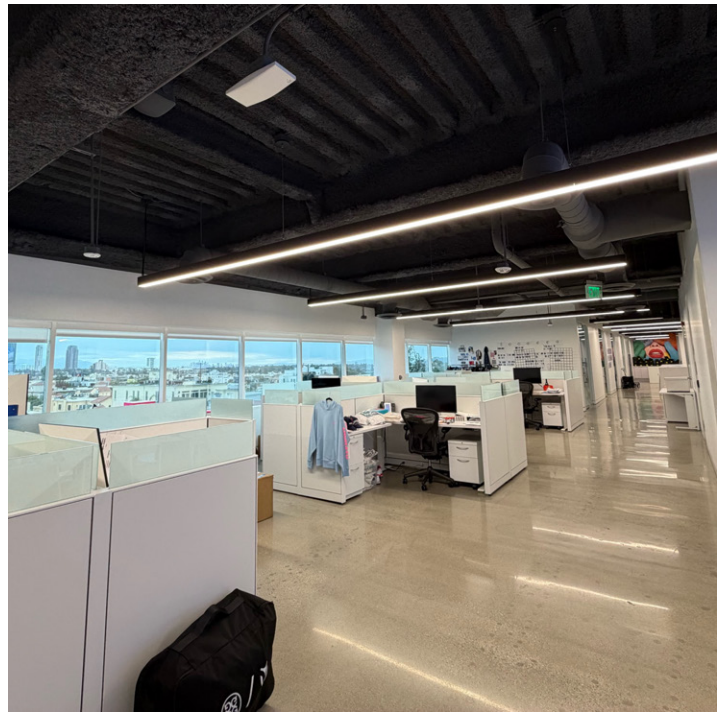
Rental rate

Immediate

Availability

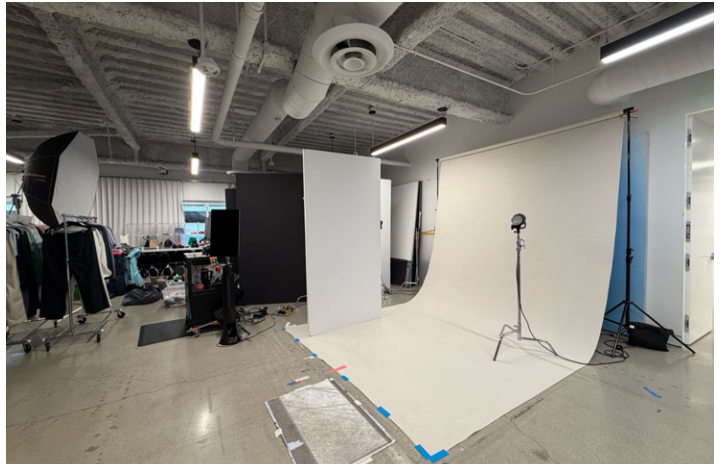
Available

Furniture



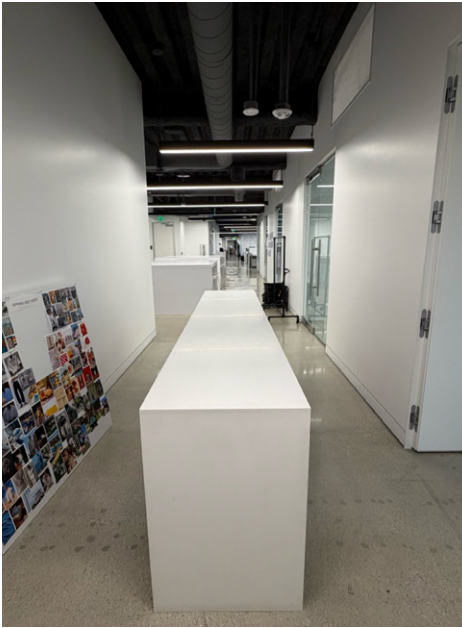
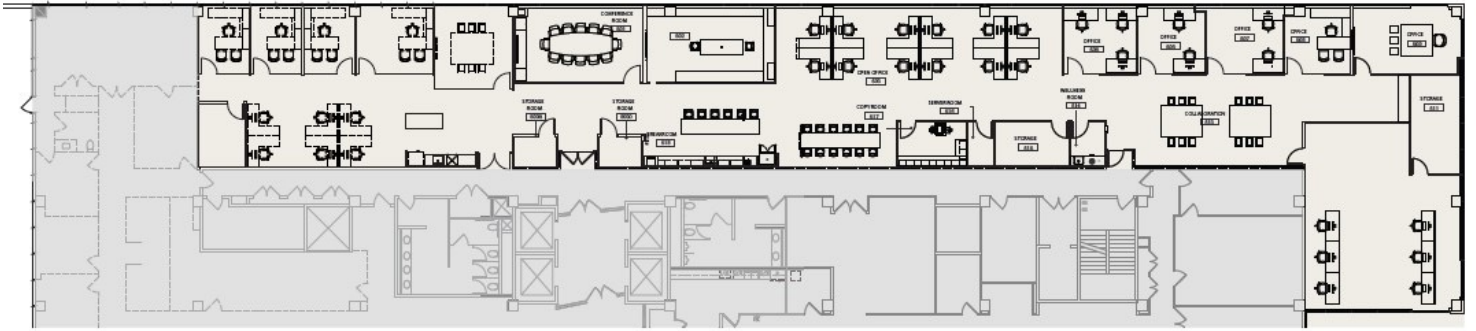
- 9 glass front offices
- 1 large conference room
- 1 small conference room
- 18 work stations with capacity for more
- Photo studio
- Show room / small conference room
- 2 kitchens
- IT closet with Cat6 cabling
- Large production room
- 4 storage closets
- Mother's room
- Sweeping east facing views of Wilshire corridor, Beverly/Hollywood Hills, Century City, and Downtown.

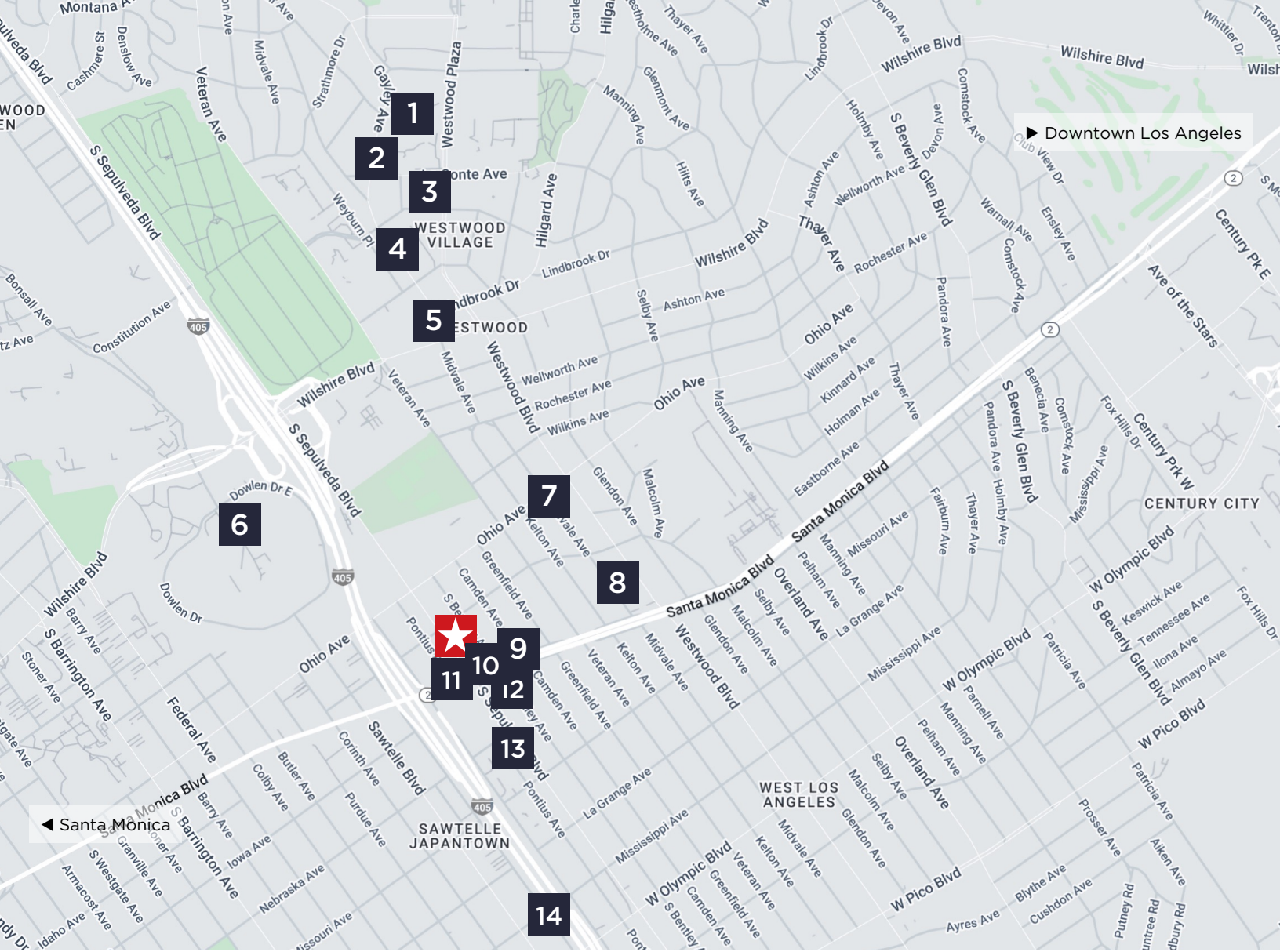




5TH FLOOR

10,618 SF Available





- 1. UCLA Medical Center
- 2. In-N-Out Burger
- 3. Target
- 4. Whole Foods Market
- 5. LA Fitness
- 6. VA Medical Center
- 7. Bristol Farms
- 8. Sprouts Farmers Market
- 9. Hamasaku

- 10. LA Grind Coffee
- 11. Chaumont Bakery & Cafe
- 12. Panera Bread
- 13. Equinox
- 14. Nijiya Market

 1640 S Sepulveda Blvd



Andy Lustgarten

+1 310 444 1040
 alustgarten@savills.us
 License #01381919

Dan Heller

+1 213 553 3851
 danheller@savills.us
 License #02226313

© 2026 Savills. All rights reserved. The information contained in this communication has been obtained from a variety of sources believed to be reliable but has not been verified. NO WARRANTY OR REPRESENTATION, EXPRESS OR IMPLIED, IS MADE AS TO THE CONDITION OF THE PROPERTY OR ACCURACY OR COMPLETENESS OF THE INFORMATION CONTAINED HEREIN AND SAME IS SUBMITTED SUBJECT TO ERRORS, OMISSIONS, CHANGE OF PRICE, RENTAL OR OTHER CONDITIONS, WITHDRAWAL WITHOUT NOTICE AND TO ANY SPECIFIC CONDITIONS IMPOSED BY THE PROPERTY OWNER OR LESSOR.