

FOR SUBLEASE



**2 Rancho Circle**

Lake Forest, CA

**High-Image Corporate Headquarters / Industrial Building**

**±8,563 SF Available**

**BUILDING FEATURES**

- High Image Building
- ±4,000 SF of Office
- 3:1,000 Parking
- 24' Clear Height
- Two Ground Level Doors
- 400 Amps, 277/408 Volts (confirm)
- Sprinklered
- Floor Plan on Reverse
- Sublease through 12/31/2026
- Available - Now
- Longer Lease Term Possible

**Jeff Mitchell**

Senior Vice President / Partner

D (949) 263-5323 | T (949) 851-5100

[jmitchell@voitco.com](mailto:jmitchell@voitco.com)

Lic #00972088

**Shane Mitchell**

Associate

D (949) 263-5318 | C (949) 205-9373

[smitchell@voitco.com](mailto:smitchell@voitco.com)

Lic #02158130

**Voit Real Estate Services**

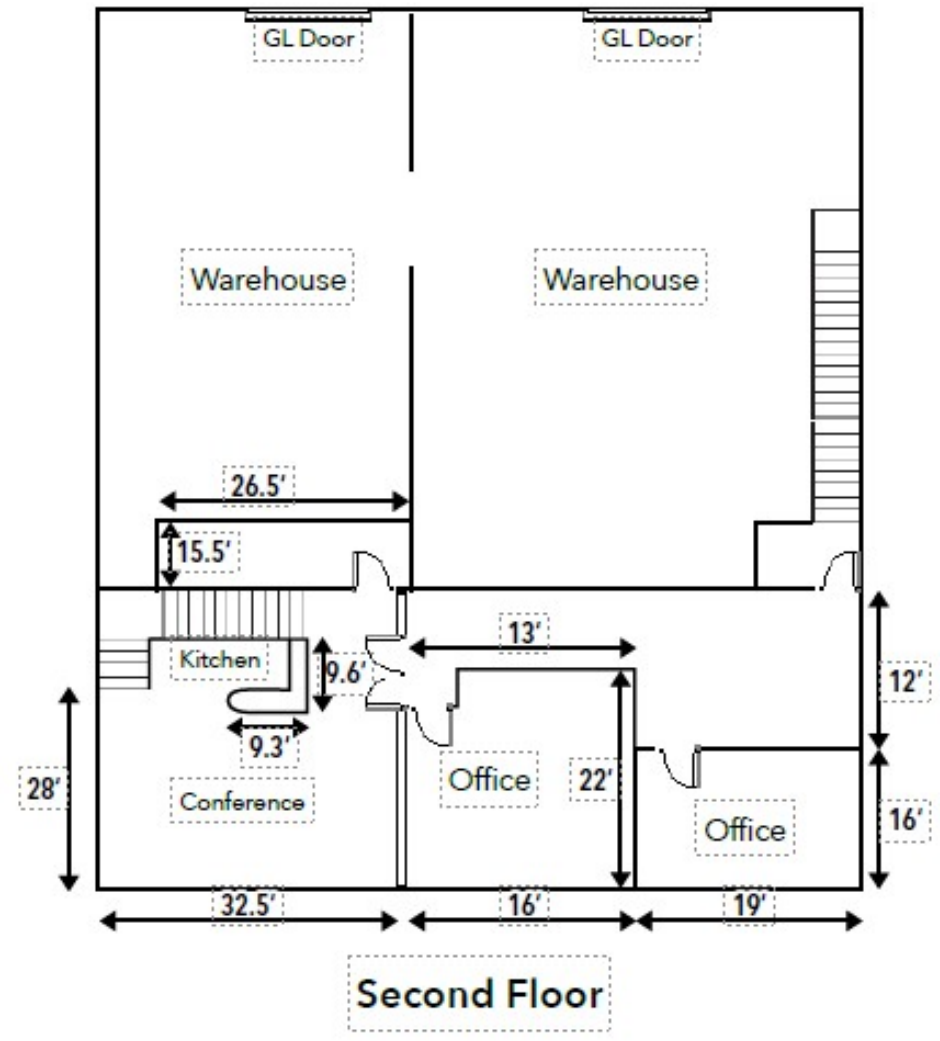
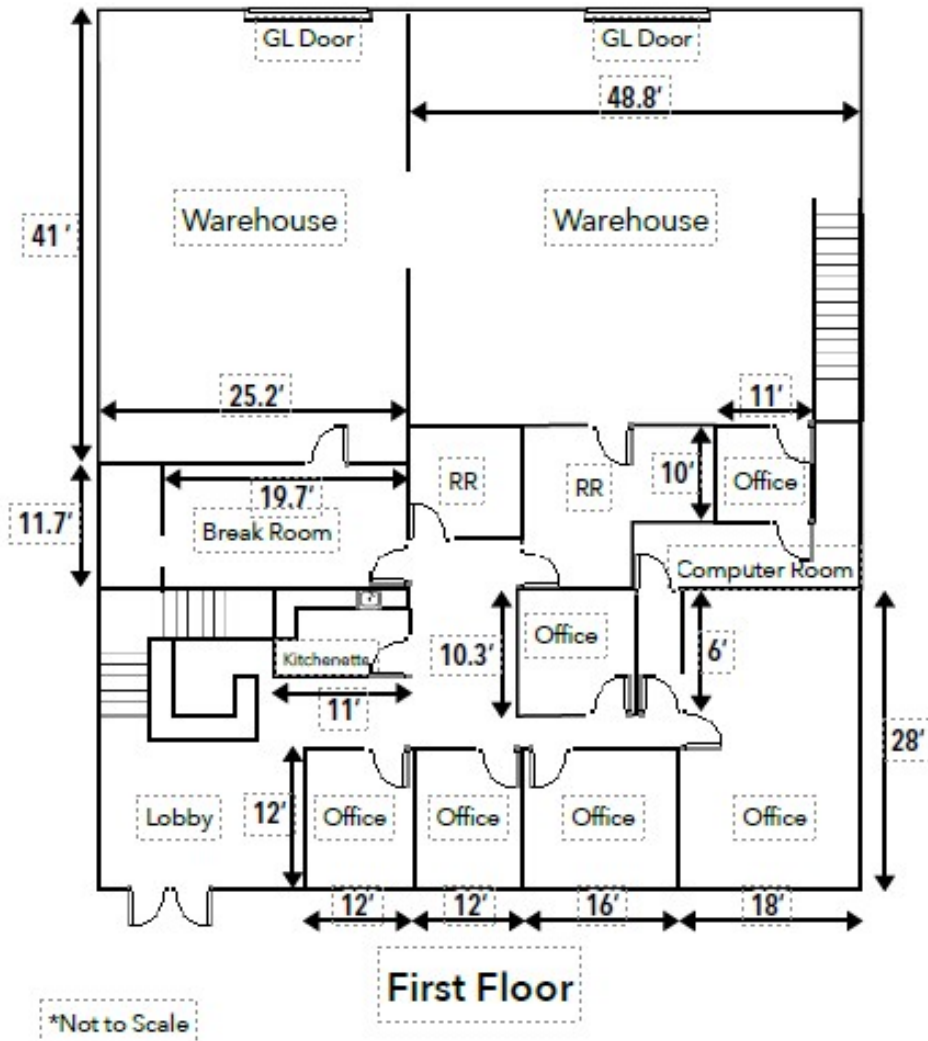
Irvine, CA

2020 Main St., Ste. 100 | Irvine, CA 92614

T (949) 851-5100 | F (949) 261-9092

[www.voitco.com](http://www.voitco.com)

**FLOOR PLAN**



**Jeff Mitchell**  
Senior Vice President / Partner  
D (949) 263-5323 | T (949) 851-5100  
jmittell@voitco.com  
Lic #00972088

**Shane Mitchell**  
Associate  
D (949) 263-5318 | C (949) 205-9373  
smitchell@voitco.com  
Lic #02158130

**Voit Real Estate Services**  
Irvine, CA  
2020 Main St., Ste. 100 | Irvine, CA 92614  
T (949) 851-5100 | F (949) 261-9092  
[www.voitco.com](http://www.voitco.com)