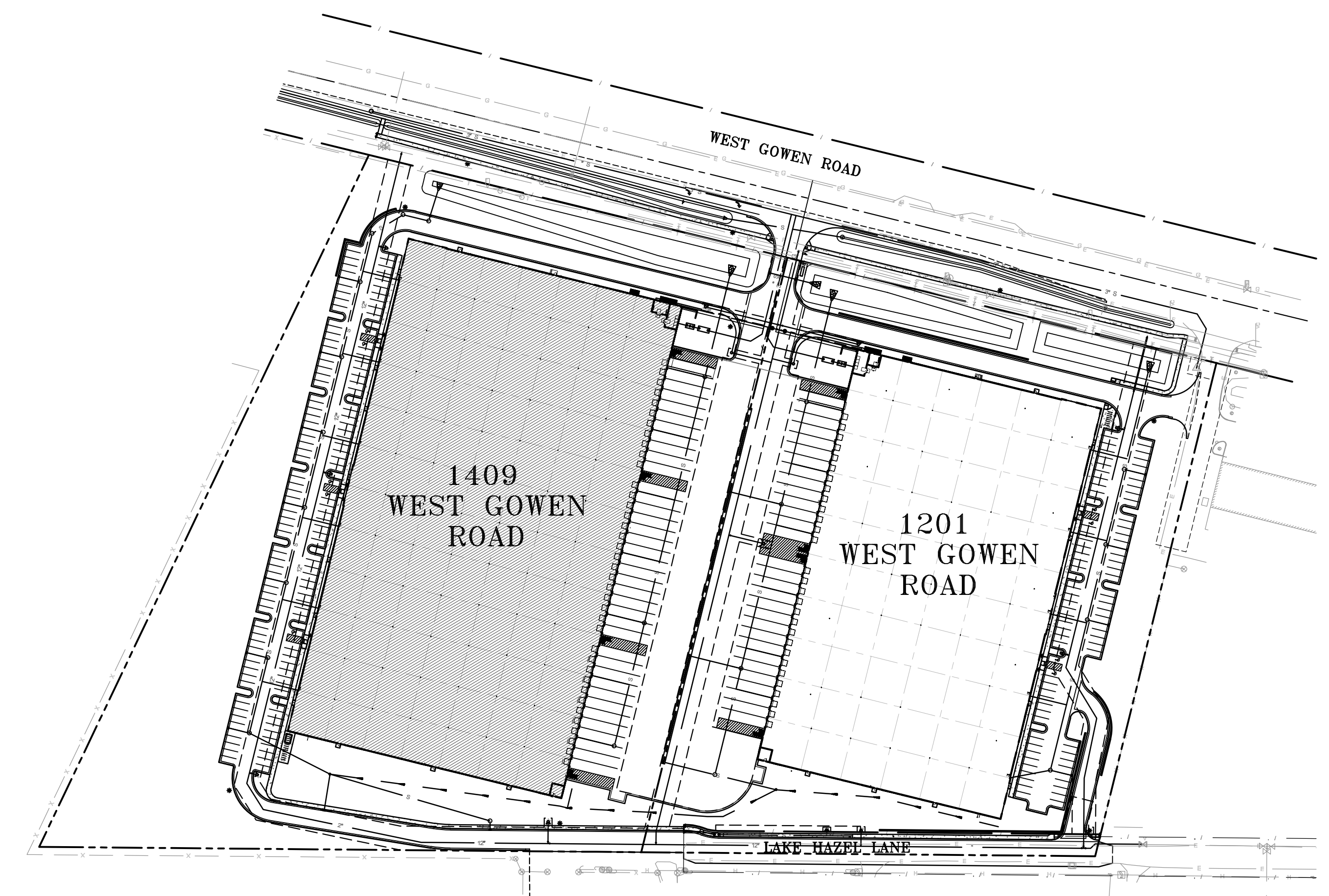


**FLOOR PLAN** 172,238 SF  
742 SF COMMON  
SCALE: 1" = 30'-0"  
172,980 SF TOTAL



**PLOT PLAN**  
SCALE: 1" = 120'-0"

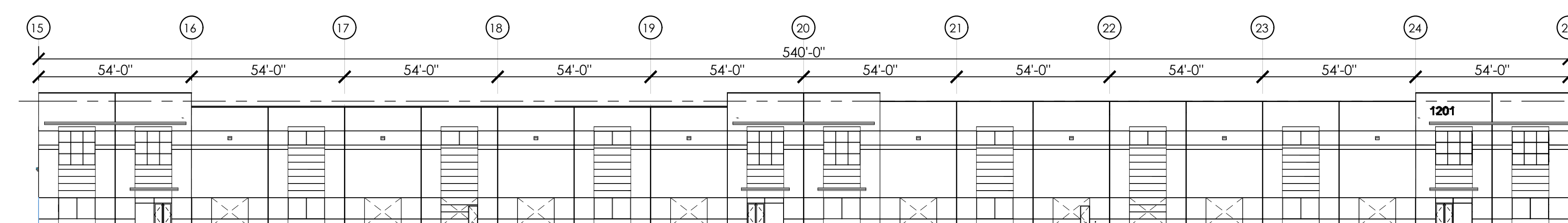
SUDWEST Boise, LLC Presents  
**HIGH WEST BUSINESS PARK**  
West Gowen Rd ■ Boise, ID

**Building B**  
1201 West Gowen Rd.

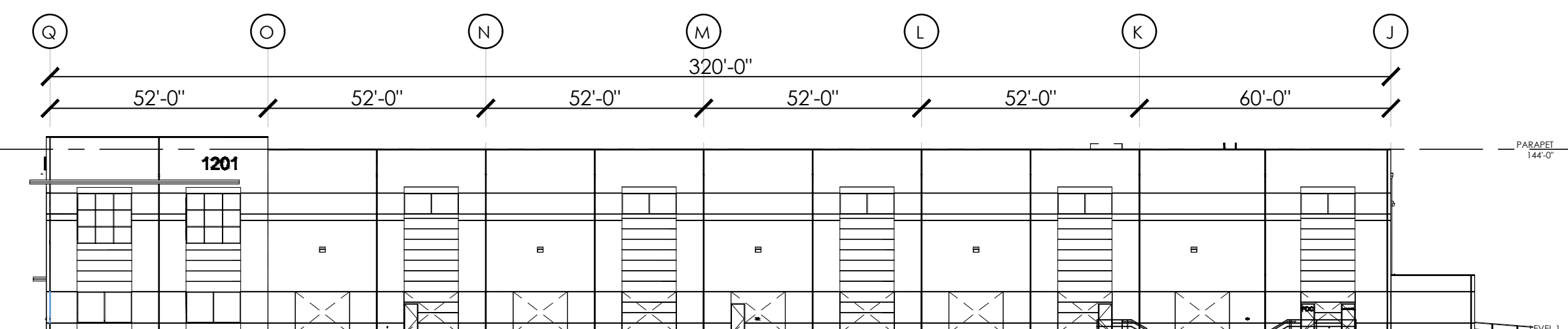
Building Area: 172,980 SF

- 60' Speed Bay; 54' x 52' Typical Bays
- Dock Doors @ 13'-6": 29
- Drive-In Door w/Ramp: 1 (+3 future knock-outs)
- 84 POV Parking Spaces + 4 Accessible: 88 TOTAL

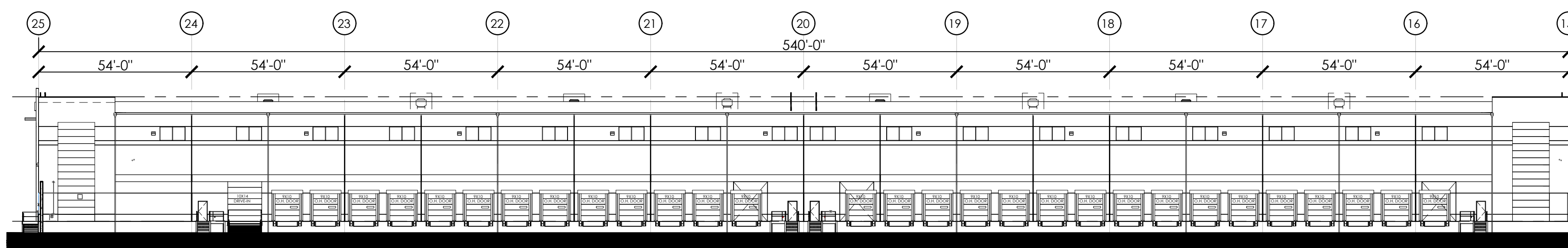
**FLOOR PLAN**  
SCALE: 1" = 30'-0"



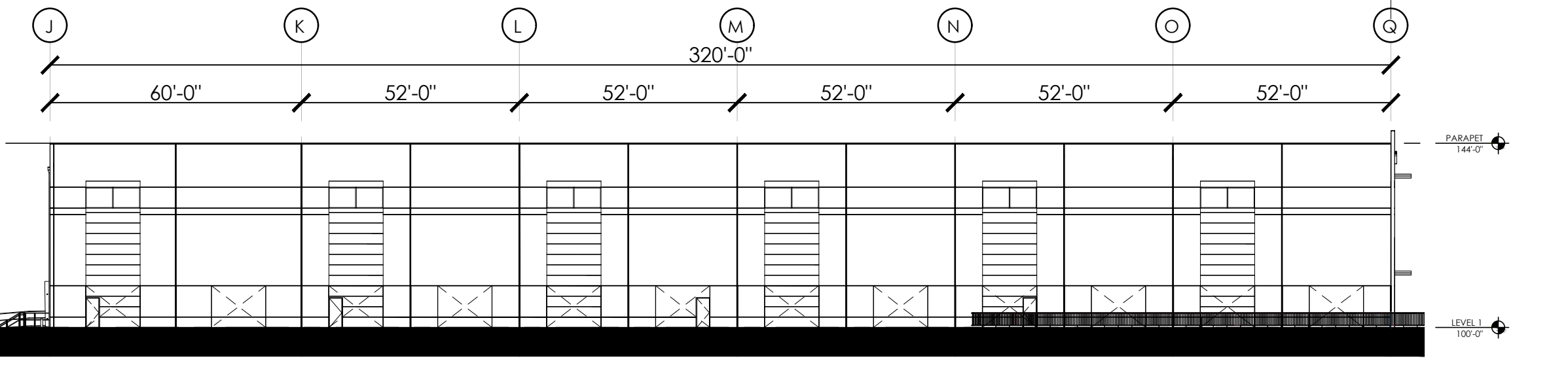
**EAST ELEVATION**  
SCALE: 1" = 30'-0"



**NORTH/WEST GOWEN RD ELEVATION**  
SCALE: 1" = 30'-0"



**WEST/TRUCK COURT ELEVATION**  
SCALE: 1" = 30'-0"



**SOUTH ELEVATION**  
SCALE: 1" = 30'-0"

**SINGLE TENANT LAYOUT**



REV. NO.	REV. DATE	DESCRIPTION	PROJECT NO.
1		Sudwest Boise, LLC at <b>HIGH WEST BUSINESS PARK</b> 1201 West Gowen Road, Boise, ID	1409 WGR
<b>SUDLER</b> <small>845 GREEN VILLAGE ROAD            CHATHAM, NEW JERSEY 07928            973-257-0700</small>			DRAWN BY MGD
Marketing Plan: SINGLE-TENANT LAYOUT			SCALE AS NOTED
			DATE 04-15-2025
			MP-1-B