



PROPERTY DESCRIPTION

.72 ac for Development located adjacent to the highly anticipated Southtown Mixed Use redevelopment project in the heart of Birmingham's medical and research district. Currently under construction the Southtown project will consist of mixed income residential housing, senior housing, office, retail, restaurants all designed with community walkability in mind. Given the locations proximity to UAB, St Vincent's and The VA Hospital it will have a primary focus on companies that expand on Birmingham's healthcare and biotech industry.

PROPERTY HIGHLIGHTS

- Prime Location in revitalized area
- Easy access to Interstate
- Close proximity to Major Medical
- High walkability neighborhood

OFFERING SUMMARY

Sale Price:	\$875,000
Lot Size:	0.72 Acres

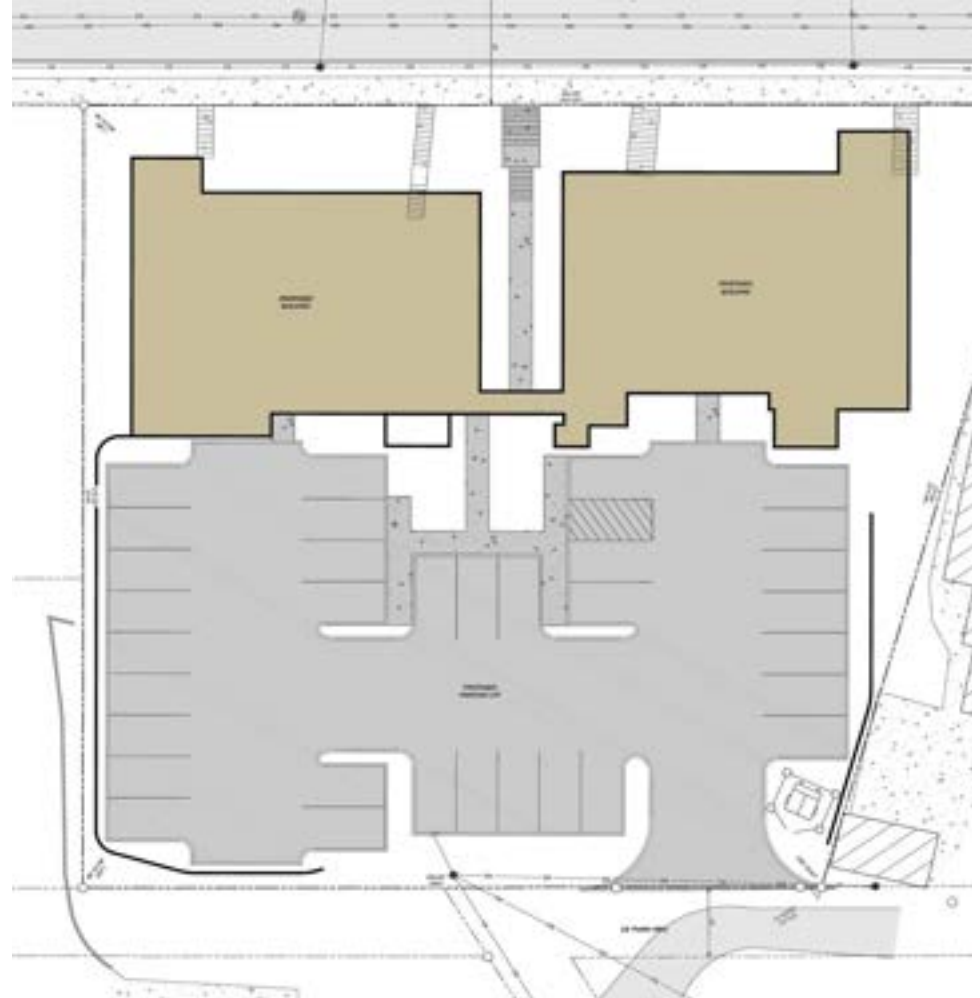
DEMOGRAPHICS	1 MILE	3 MILES	5 MILES
Total Households	7,683	35,347	76,326
Total Population	15,942	78,043	177,101
Average HH Income	\$81,157	\$101,474	\$100,639

TRISH RUSHING, CCIM

205.930.1785
trushing@redrockrg.com



Multifamily Conceptual Plan



Multifamily Conceptual Plan

TRISH RUSHING, CCIM

205.930.1785

trushing@redrockrg.com



**EDGEHILL AT SOUTHTOWN
DEVELOPMENT RENDERING**

SITE

Edgehillbhm.com

TRISH RUSHING, CCIM

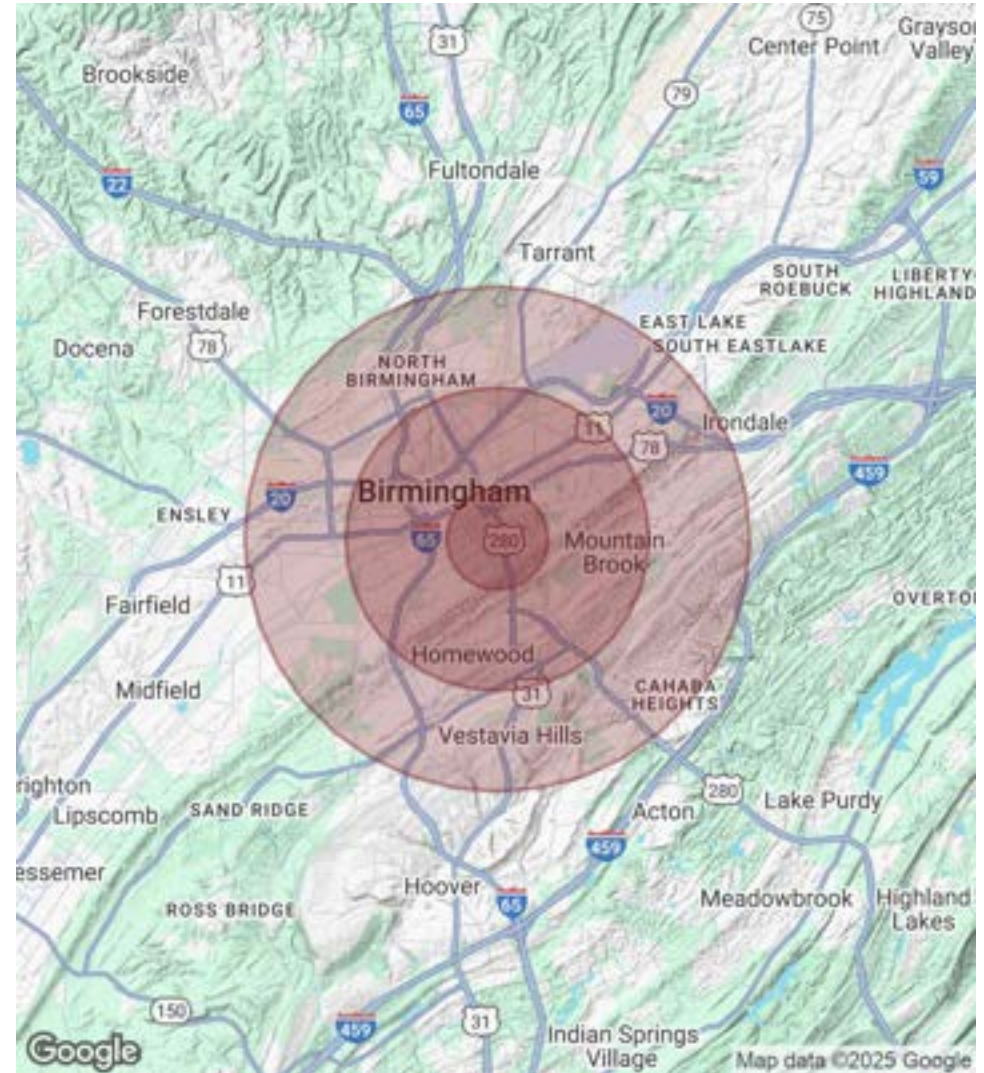
205.930.1785

trushing@redrockrg.com

POPULATION	1 MILE	3 MILES	5 MILES
Total Population	15,942	78,043	177,101
Average Age	36	38	39
Average Age (Male)	36	37	38
Average Age (Female)	35	39	41

HOUSEHOLDS & INCOME	1 MILE	3 MILES	5 MILES
Total Households	7,683	35,347	76,326
# of Persons per HH	2.1	2.2	2.3
Average HH Income	\$81,157	\$101,474	\$100,639
Average House Value	\$440,170	\$471,994	\$402,497

Demographics data derived from AlphaMap



TRISH RUSHING, CCIM

205.930.1785
trushing@redrockrg.com