



131 E. HARGETT ST

RALEIGH, NC 27601

2,603 SQ. FT.

**FOR
LEASE**

LISTING BROKER:

WALLACE GREEN
919.630.0180 MOBILE
WGREEN@TRADEMARKPROPERTIES.COM

JENNETH MITCHELL
919.608.0938 MOBILE
JMITCHELL@TRADEMARKPROPERTIES.COM



SMOKY HOLLOW

PENDO HQ

*STATE EMPLOYEE'S
CREDIT UNION HQ*

THE DILLON

*NC STATE
CAPITOL*

PNC BANK HQ

SITE

*MARBLES KIDS
MUSEUM*

*RALEIGH
CONVENTION CENTER*

RED HAT HQ

MOORE SQUARE

1001 WADE AVENUE SUITE 300, RALEIGH, NC 27605
TRADEMARKPROPERTIES.COM | 919-782-5552

**131 E. HARGETT ST
RALEIGH, NC 27601**

Discover the charm awaiting you in this historic building. The ground floor presents an ideal prospect for a retail boutique, salon, and many other options while the second floor is perfectly suited for a solitary office tenant, featuring multiple offices of varying sizes.

PROPERTY HIGHLIGHTS

- » First Level: 1,210 SF
- » Second Level: 1,393 SF
- » Located in the Historic E. Hargett St.
- » Surrounded by Downtown Raleigh staples, Sitti, Marbles Kids Museum and IMAX, Moore Square, Watt's & Ward and more



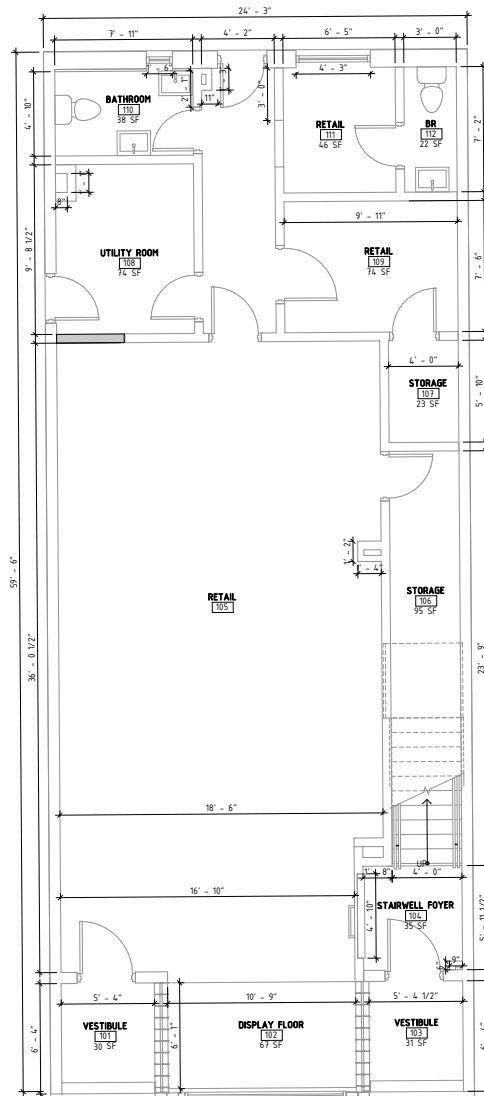
WALLACE GREEN
919.630.0180 (M)
WGREEN@TRADEMARKPROPERTIES.COM

JENNETH MITCHELL
919.608.0938 (M)
JMITCHELL@TRADEMARKPROPERTIES.COM

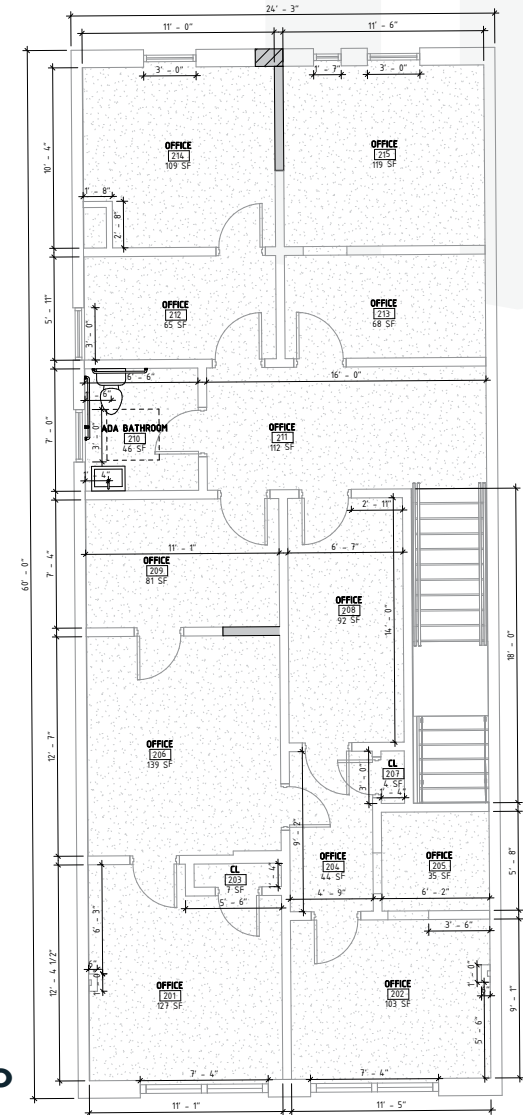
131 E. HARGETT ST
RALEIGH, NC 27601

FLOOR PLANS

FLOOR ONE



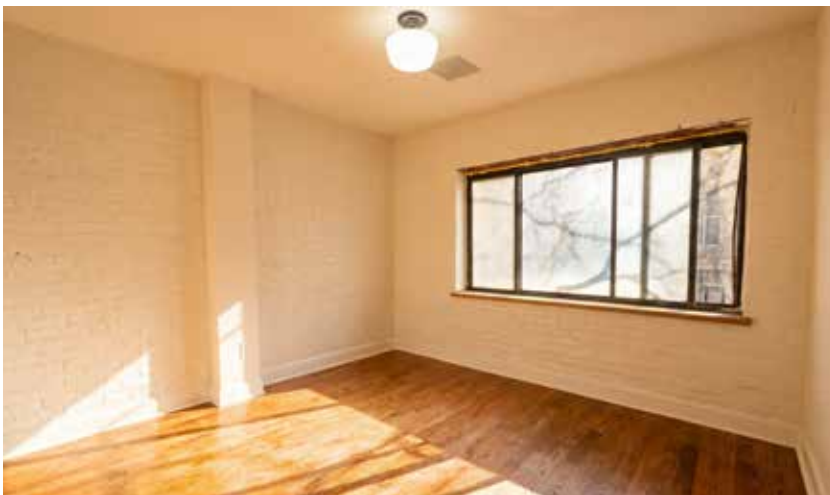
FLOOR TWO



WALLACE GREEN
919.630.0180 (M)
WGREEN@TRADEMARKPROPERTIES.COM

JENNETH MITCHELL
919.608.0938 (M)
JMITCHELL@TRADEMARKPROPERTIES.COM

PROPERTY PHOTOS



PROPERTY PHOTOS



131 E. HARGETT ST
RALEIGH, NC 27601

RALEIGH ACCOLADES

- **#1 Most Livable City**
- *US News & World Report (2024)*
- **#3 Best State Capital to Live in**
- *WalletHub (2025)*
- **#4 Best Cities for Headquarters**
- *Triangle Business Journal (2025)*
- **Best Metro Area for Growth**
- *American Growth Project Report (2023)*
- **#2 Hottest Housing Market**
- *US News & World Report (2024)*
- **#1 Most Livable City**
- *American Growth Project Report (2023)*
- **#3 Best Place to Live**
- *US News & World Report (2024)*



WALLACE GREEN
919.630.0180 (M)
WGREEN@TRADEMARKPROPERTIES.COM

JENNETH MITCHELL
919.608.0938 (M)
JMITCHELL@TRADEMARKPROPERTIES.COM

LISTING BROKER:

WALLACE GREEN

919.630.0180 MOBILE
WGREEN@TRADEMARKPROPERTIES.COM

JENNETH MITCHELL

919.608.0938 MOBILE
JMITCHELL@TRADEMARKPROPERTIES.COM



THIS IS OUR TRADEMARK

THE INFORMATION CONTAINED HEREIN WAS OBTAINED FROM SOURCES BELIEVED RELIABLE; HOWEVER, TRADEMARK PROPERTIES MAKES NO GUARANTEES, WARRANTIES, OR REPRESENTATIONS AS TO THE COMPLETENESS OR ACCURACY THEREOF. THE PRESENTATION OF THIS PROPERTY IS SUBMITTED SUBJECT TO ERRORS, OMISSIONS, CHANGES OF PRICE OR CONDITIONS PRIOR TO SALE OR LEASE, OR WITHDRAWAL WITHOUT NOTICE.