

FOR LEASE - DEAD STORAGE

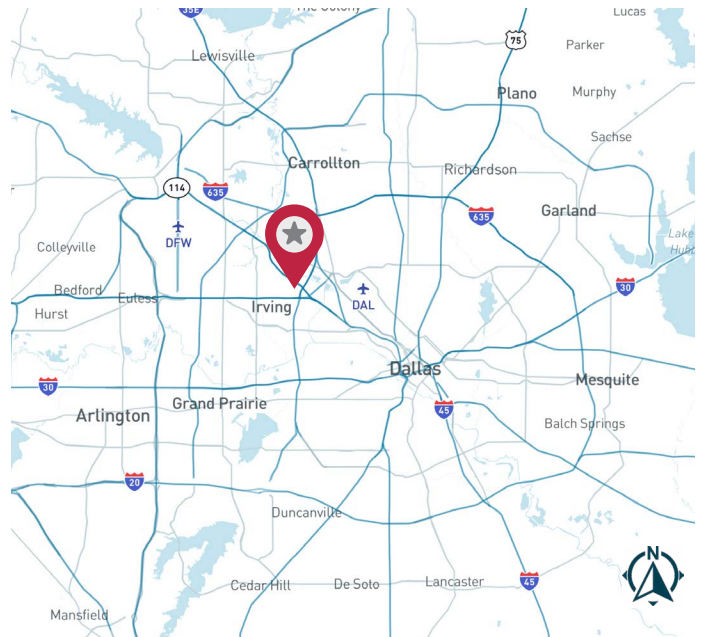
2202 E Union Bower Road | Irving, TX 75061



± 15,968 SF | FOR LEASE

AVAILABILITY HIGHLIGHTS

- 15,968 SF - Dead Storage
- 14'-17' Clear Height
- 2 Dock High Doors
- Front Load Configuration
- Flexible Term Available
- Ability to Fence and Secure Storage Area
- Immediate Access to Loop 12, SH-183, SH-114



FOR MORE INFORMATION:

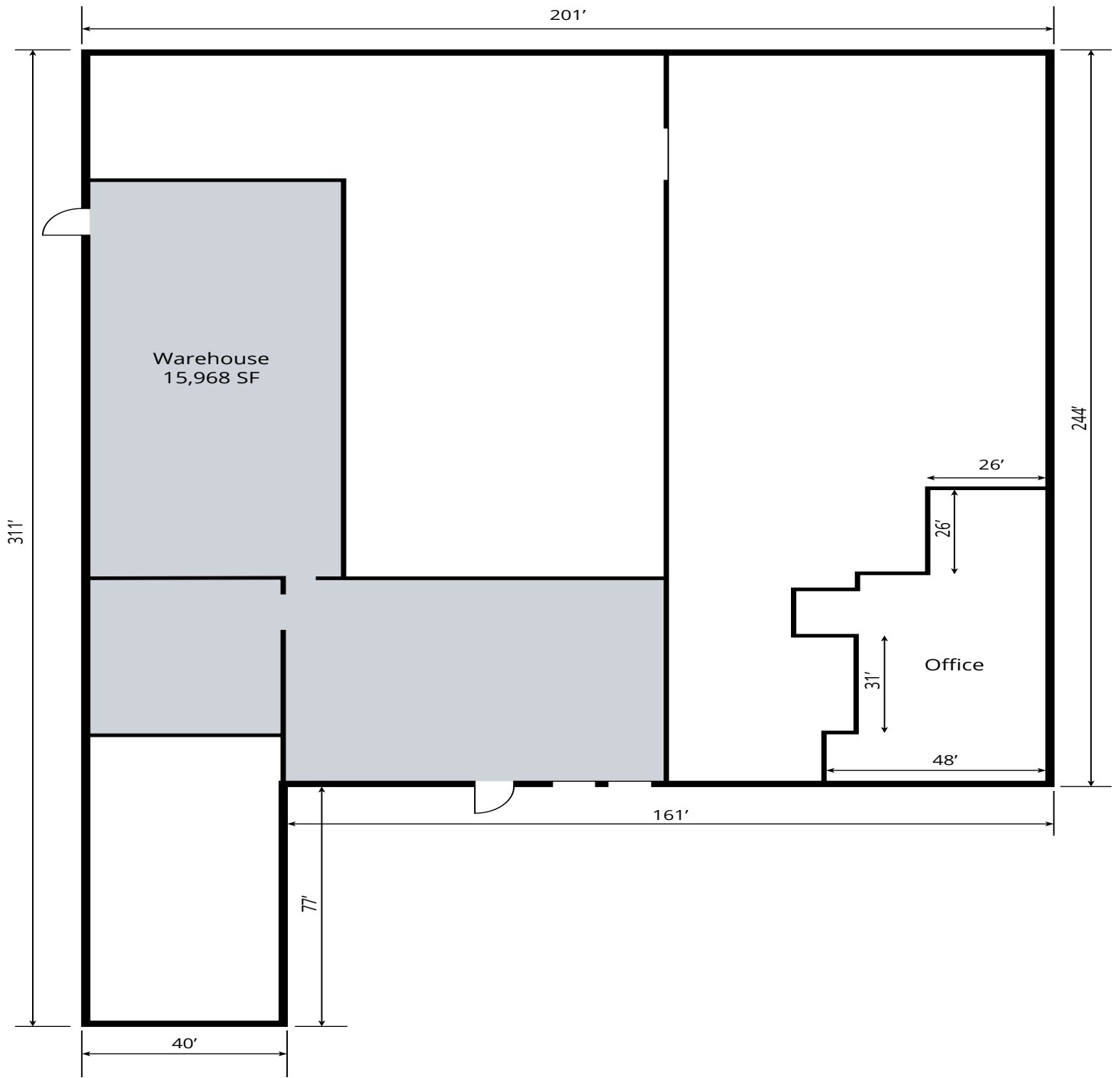
CORBIN BLOUNT, SIOR
214.577.1984
cblount@lee-associates.com

LEE & ASSOCIATES
COMMERCIAL REAL ESTATE SERVICES
leedallas.com

FOR LEASE

±15,968 SF

FLOOR PLAN



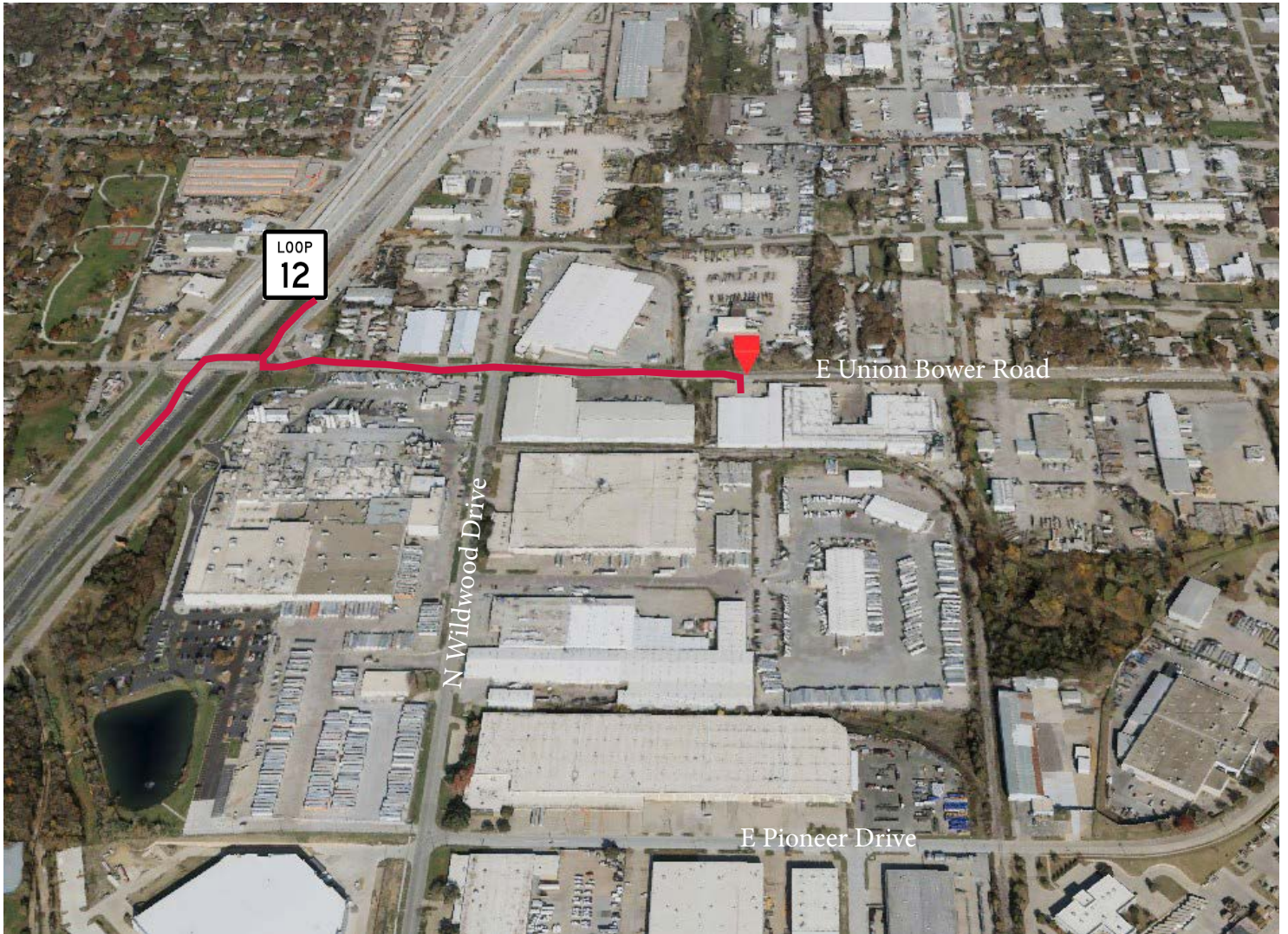
FOR MORE INFORMATION:

CORBIN BLOUNT, SIOR
214.577.1984
cblount@lee-associates.com

LEE & ASSOCIATES
COMMERCIAL REAL ESTATE SERVICES
leadallas.com

FOR LEASE

±15,968 SF



0.3 MILES

FOR MORE INFORMATION:

CORBIN BLOUNT, SIOR
214.577.1984
cblount@lee-associates.com

LEE & ASSOCIATES
COMMERCIAL REAL ESTATE SERVICES
leadallas.com

FOR LEASE

±15,968 SF



FOR MORE INFORMATION:

CORBIN BLOUNT, SIOR
214.577.1984
cblount@lee-associates.com

LEE & ASSOCIATES
COMMERCIAL REAL ESTATE SERVICES
leedallas.com