

À LOUER | FOR LEASE

11855 & 11860 Boul. Rodolphe-Forget | Montréal, QC



Industriel | Industrial



X²

Subdivisible

168,184

Min: 83,111

Pi.Ca. | Sq.Ft.

Comprend | Includes
Mezzanines



5%

Espace de bureau
Office space



25 & 40

À proximité des
autoroutes
Near Highways





18'

Hauteur libre
Clear height

POINTS SAILLANTS

-  Espace Industriel idéal pour l'entreposage et la distribution
-  Accessible par le transport en commun

PROPERTY HIGHLIGHTS

-  Industrial space ideal for storage and distribution
-  Accessible by public transportation



1 & 1

(11855) (11860)

Porte niveau de sol
Drive In door



6 & 4

(11855) (11860)

Portes niveau camion
Truck-level doors

514-344-3334

olymbec.com
info@olymbec.com
1-888-OLYMBEC

333, boulevard Décarie, 5^e étage
St-Laurent, QC H4N 3M9

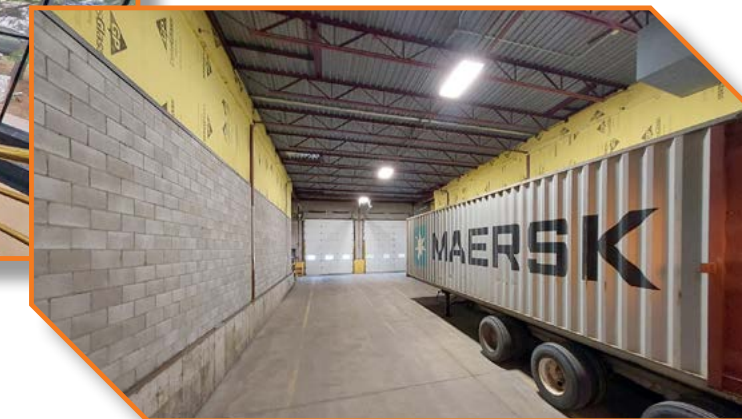
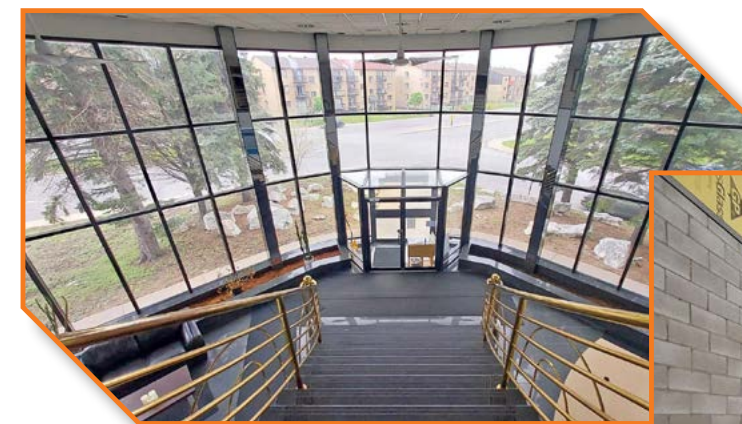
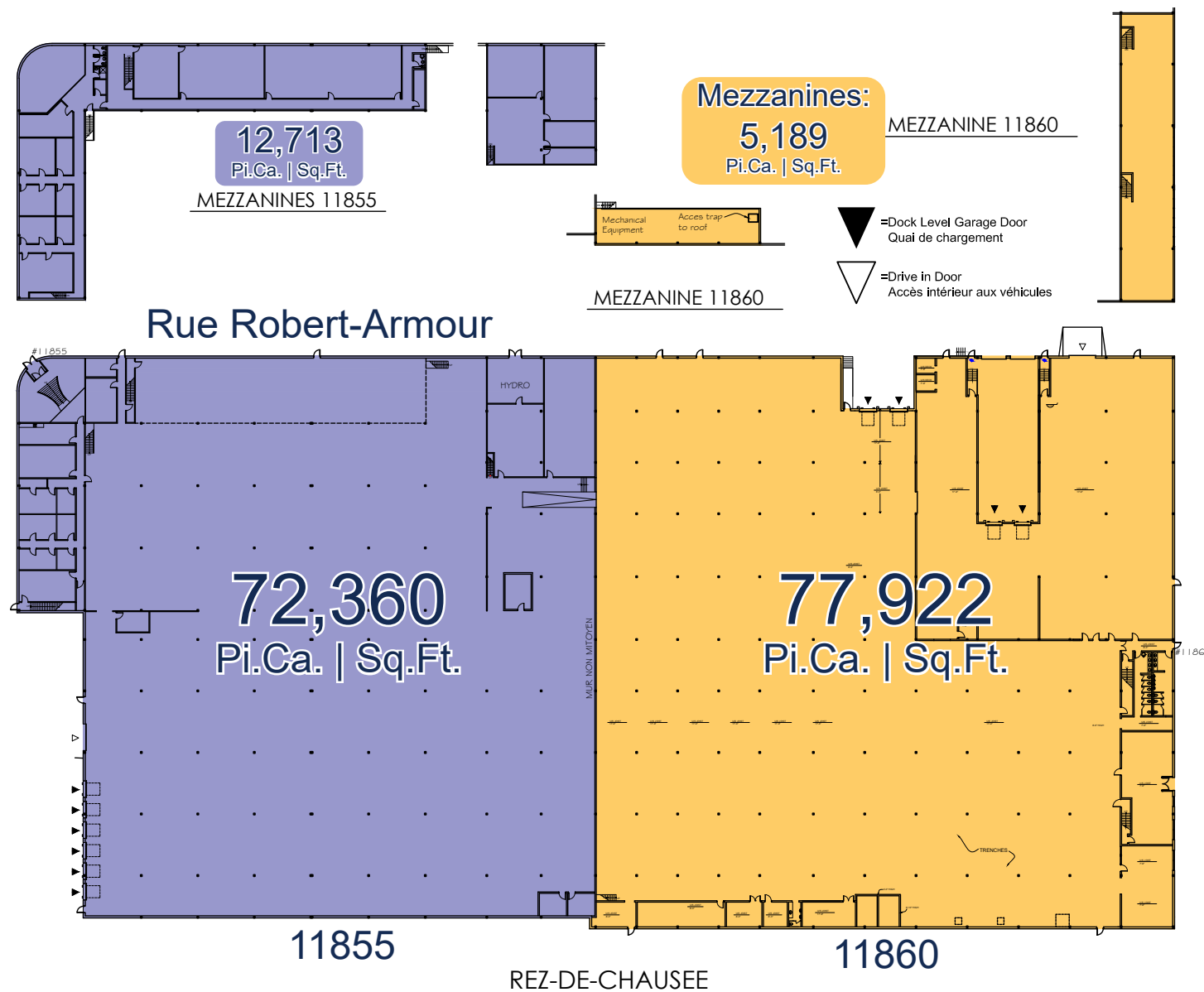


À LOUER | FOR LEASE

11855 & 11860 Boul. Rodolphe-Forget | Montréal, QC



Boul. Rodolphe-Forget



*Note That All Dimensions Are Approximate and subject to change without notice / Veuillez noter que les dimensions indiquées sont approximatives et peuvent changer sans avis

514 344-3334

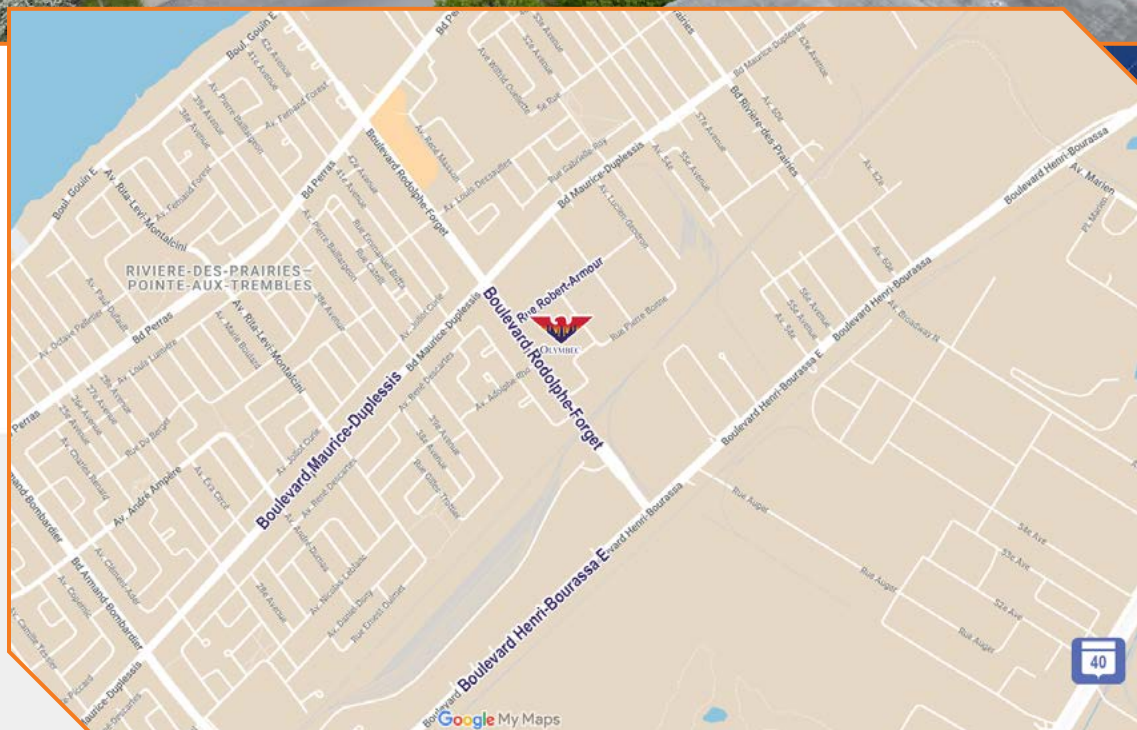
olymbec.com
 info@olymbec.com
 1-888-OLYMBEC

333, boulevard Décarie, 5^e étage
 St-Laurent, QC H4N 3M9



À LOUER | FOR LEASE

11855 & 11860 Boul. Rodolphe-Forget | Montréal, QC



514-344-3334

olymbec.com
info@olymbec.com
1-888-OLYMBEC

333, boulevard Décarie, 5^e étage
St-Laurent, QC H4N 3M9

