

# RED RIVER BUSINESS PARK

A 3-BUILDING INDUSTRIAL DEVELOPMENT TOTALING 238,946 SF

900 Arthurs Ln, Lewisville, TX 75067

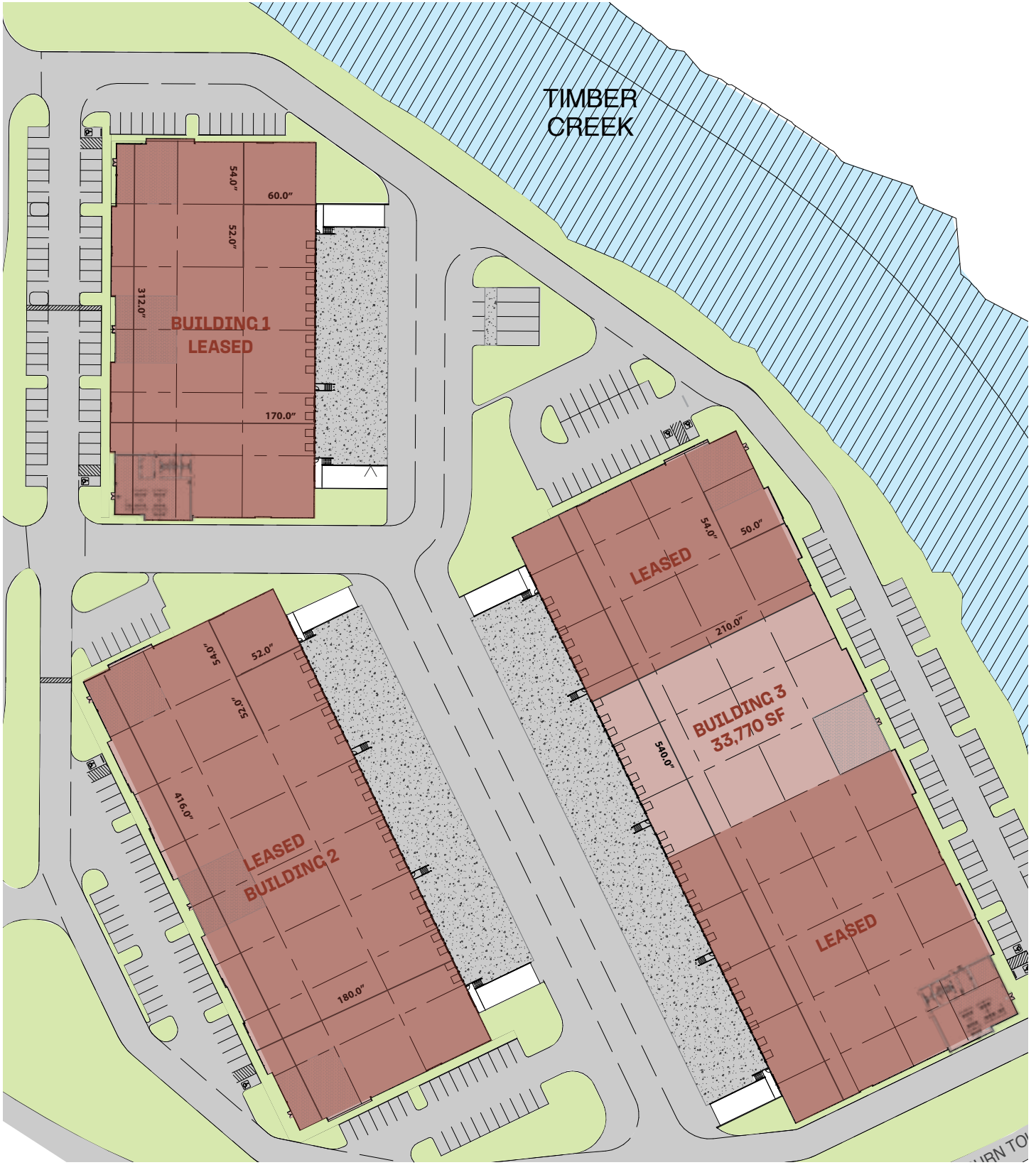


**BOB HAGEWOOD**  
214.632.8610  
bhagewood@streamrealty.com

**JEREMY KELLY**  
469.767.2075  
jkelly@streamrealty.com



# Site Layout



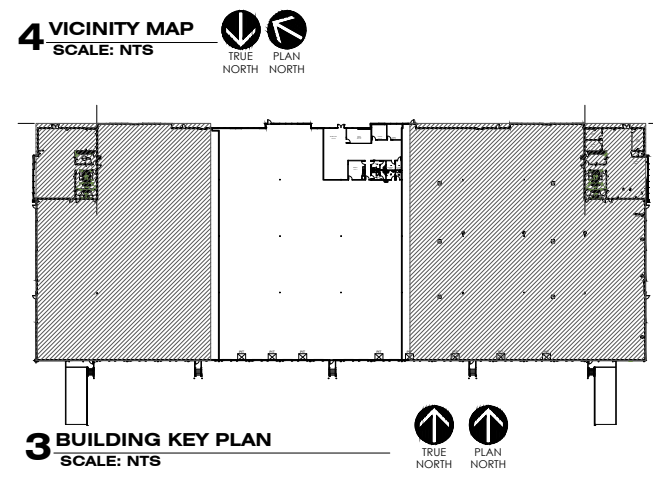
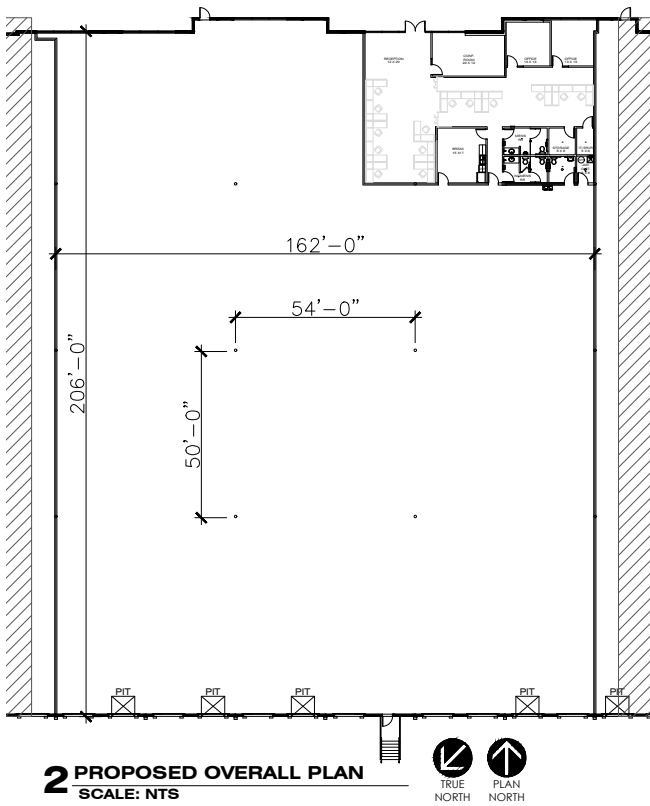
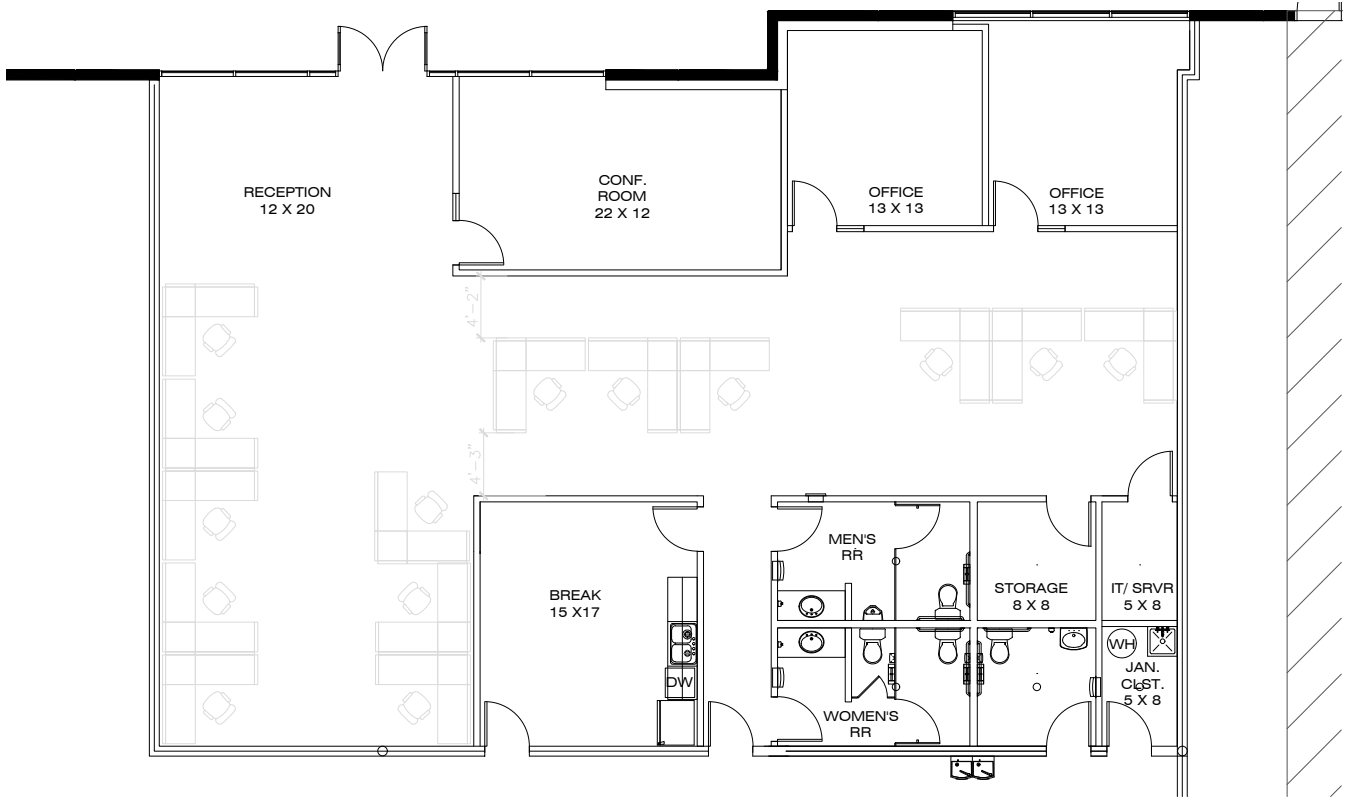
# Building Details

## BUILDING 3

Available	33,770 SF
Office	± 3,260 SF
Loading	11 Dock Doors 4 Pit Levelers
Building Depth	210'
Column Spacing	54' Wide x 50' deep; 60' speed bay
Clear Height	32'



# Spec Plan





## Location Highlights



Immediate access to I35E  
& Sam Rayburn Tollway

**250k**

Daily exposure to over  
250,000 passing vehicles

**10 mi.**

to Dallas/Fort Worth  
International Airport

**19.2 mi.**

to Dallas Love Field Airport

**23 mi.**

to Dallas CBD

**11 mi.**

to Dallas North Tollway



**BOB HAGEWOOD**  
214.632.8610  
bhagewood@streamrealty.com

**JEREMY KELLY**  
469.767.2075  
jkelly@streamrealty.com

