

Lorton Gateway Development Site



10001 Furnace Road
Acres: 16.93
Zoning: R-1

Site Highlights

- 10001 Furnace Road
 - 16.93 Acres
 - Zoned R-1, Fairfax County
 - Parcel ID: 1131 01 0005

Area Highlights

- Rt. 1 – 1 Mile
- I-95 & Rt. 123 - 2.5 Miles
- Amtrak AutoTrain – 2.5 Miles
- Ft. Belvoir – 10 Miles
- Capital Beltway – 11 Miles
- Quantico – 14 Miles

TOM MCHUGH

Senior Director

0 703 847 2720 | M 703 395 9599

tom.mchugh@cushwake.com

AJ WOOD

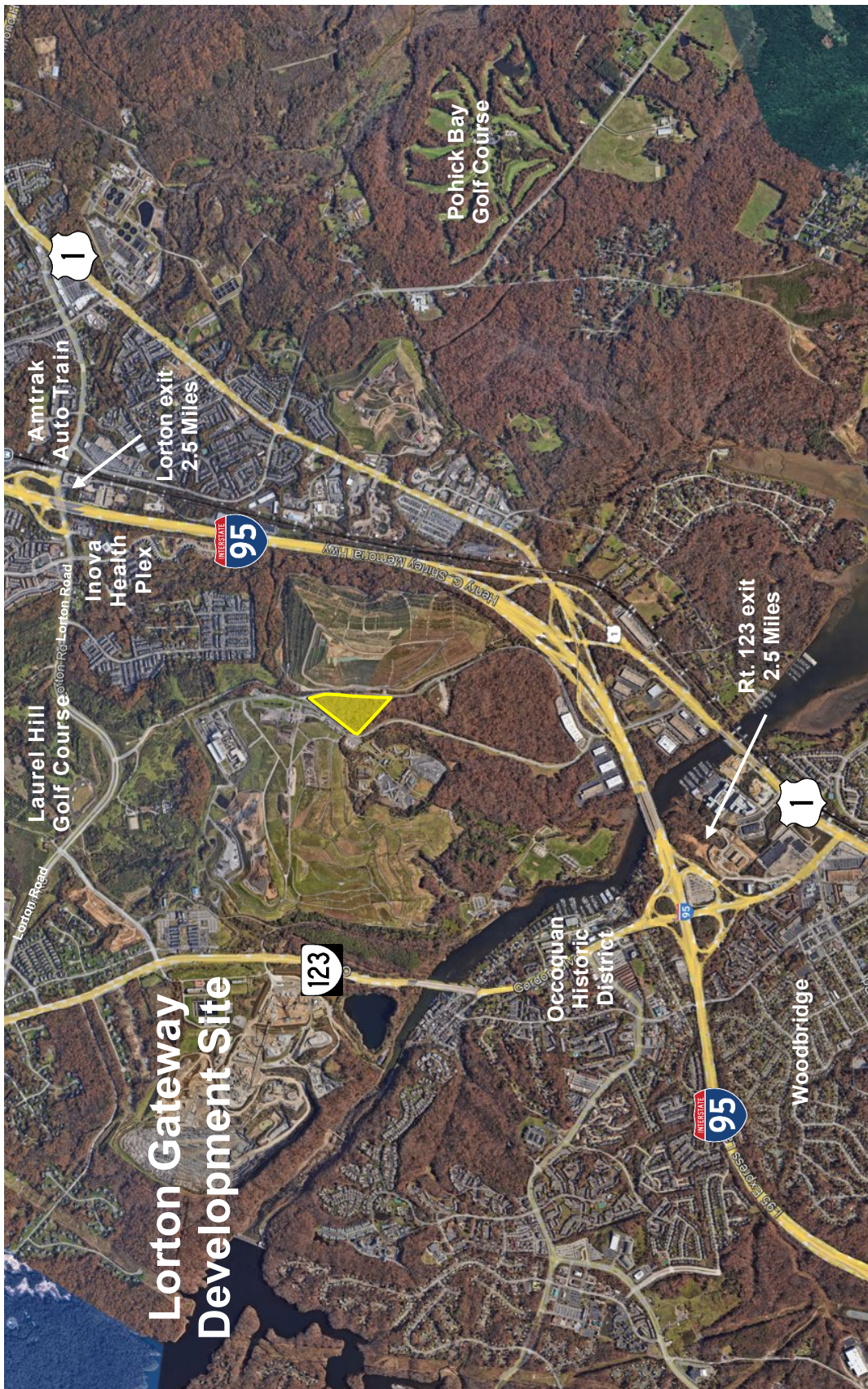
Executive Director

0 703 847 2721 | M 703 582 7317

aj.wood@cushwake.com

1800 Tysons Boulevard, Suite
200 Tysons Corner, VA 22102
+1 703 448 1200





Lorton Gateway Development Site

TOM MCHUGH
Senior Director
 0 703 847 2720 | M 703 395 9599
 tom.mchugh@cushwake.com

AJ WOOD
Executive Director
 0 703 847 2721 | M 703 582 7317
 aj.wood@cushwake.com

1800 Tysons Boulevard, Suite
 200 Tysons Corner, VA 22102
 +1 703 448 1200



Lorton Gateway Development Sites

10001 Furnace Road
Acres: 16.93
Zoning: R-1
Parcel ID:
1131 01 0005

Area Highlights

- Rt. 1 – 1 Mile
- I-95 & Rt. 123 - 2.5 Miles
- Amtrak AutoTrain – 2.5 Miles
- Ft. Belvoir – 10 Miles
- Capital Beltway – 11 Miles
- Quantico – 14 Miles

Fairfax County
Fire & Rescue
Training Center

Mordor Drive

Furnace Road



TOM MCHUGH
Senior Director
0 703 847 2720 | M 703 395 9599
tom.mchugh@cushwake.com

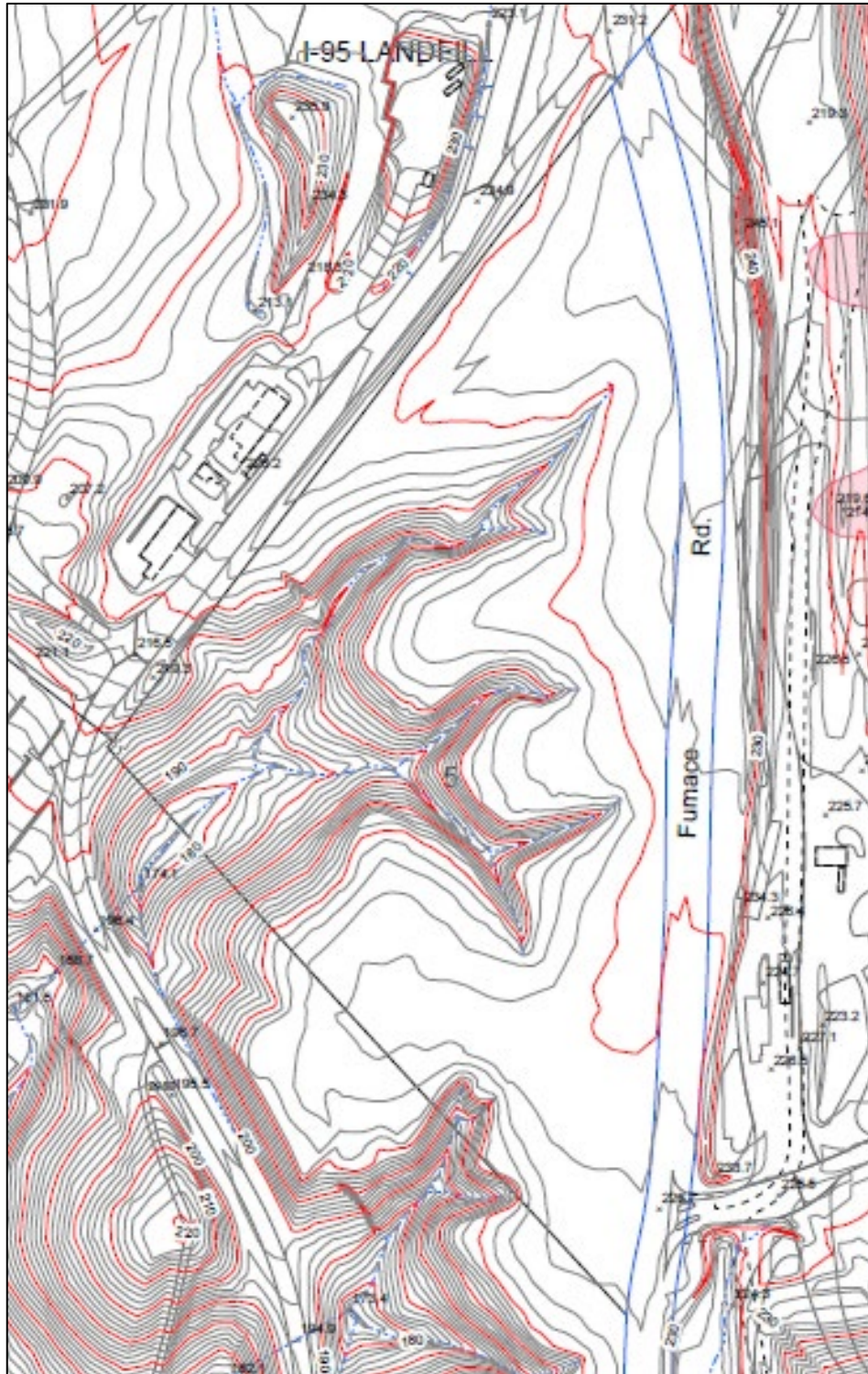
AJ WOOD
Executive Director
0 703 847 2721 | M 703 582 7317
aj.wood@cushwake.com

1800 Tysons Boulevard, Suite
200 Tysons Corner, VA 22102
+1 703 448 1200



©2024 Cushman & Wakefield. All rights reserved. The information contained in this communication is strictly confidential. This information has been obtained from sources believed to be reliable but has not been verified. NO WARRANTY OR REPRESENTATION, EXPRESS OR IMPLIED, IS MADE AS TO THE CONDITION OF THE PROPERTY (OR PROPERTIES) REFERENCED HEREIN OR AS TO THE ACCURACY OR COMPLETENESS OF THE INFORMATION CONTAINED HEREIN, AND SAME IS SUBMITTED SUBJECT TO ERRORS, OMISSIONS, CHANGE OF PRICE, RENTAL OR OTHER CONDITIONS, WITHDRAWAL WITHOUT NOTICE, AND TO ANY SPECIAL LISTING CONDITIONS IMPOSED BY Y PROJECTIONS.

Site Contour



TOM MCHUGH
Senior Director
O 703 847 2720 | M 703 395 9599
tom.mchugh@cushwake.com

AJ WOOD
Executive Director
O 703 847 2721 | M 703 582 7317
aj.wood@cushwake.com

1800 Tysons Boulevard, Suite
200 Tysons Corner, VA 22102
+1 703 448 1200

