

1290 Broadway Denver, CO

12th Floor: Suite 1225 | 7,166 RSF

1290 Broadway
Denver, CO 80203

Plug & Play Modern Office Space for Sublease in Capitol Hill Submarket



Sublease Information

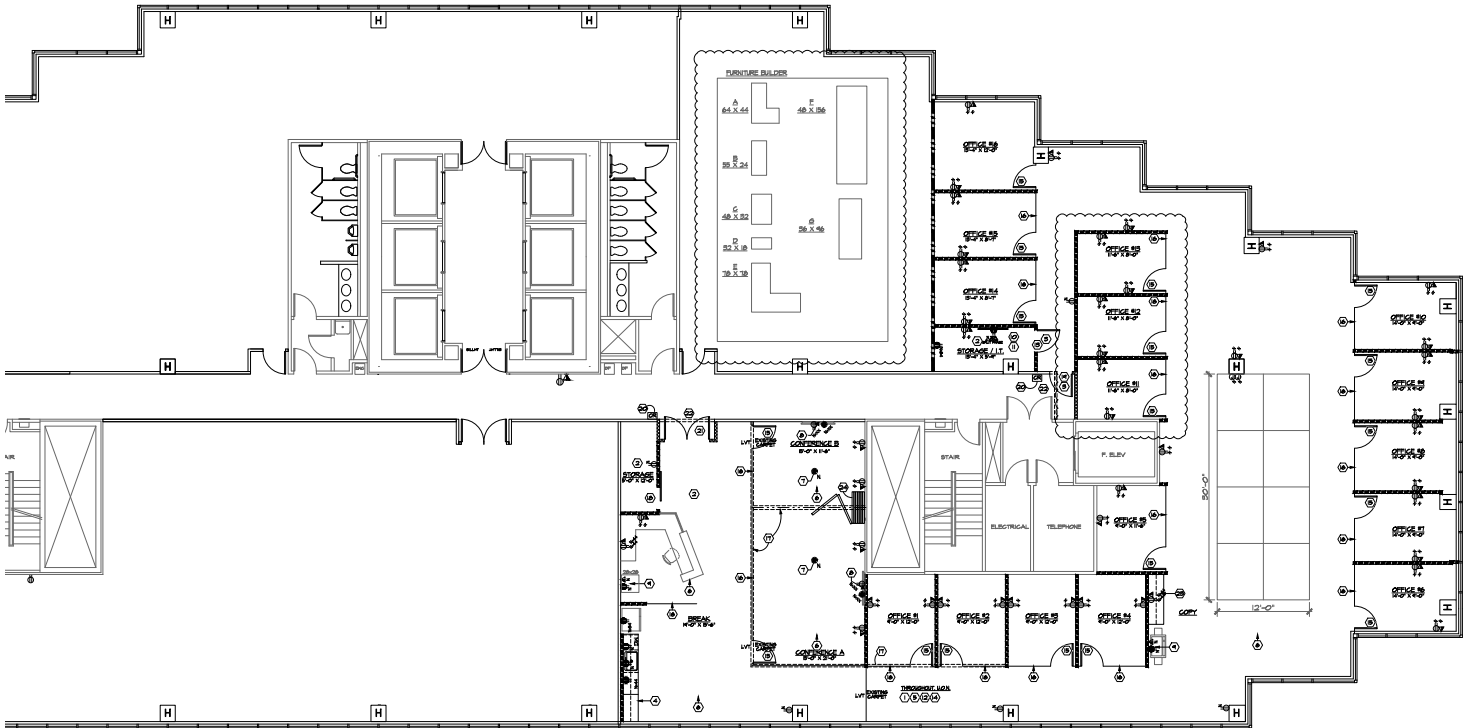
- + **Premises:** Suite 1225: 7,166 SF
- + **Asking Rate:** \$19.00/RSF FS
- + **Building Class:** A
- + **Furniture:** Included
- + **Submarket:** Capitol Hill
- + **Parking:** 1.90/1,000 SF
- + **Term:** Through October 31, 2028
- + **Occupancy:** Immediate

Building Notes

- Newly remodeled common areas
- On-site management & 24-hour security
- City and mountain views
- Stacked parking garage with abundant covered parking
- Flexible floor plans with up to 22 corner offices per floor
- Modern fitness facility: showers, lockers, weights, aerobic room
- Prime location: across from Denver Public Library, Colorado Judicial Center, Denver Art Museum
- Close to transit: 2 blocks from Civic Center RTD station & 16th Street Mall
- Excellent highway access: I-25, Broadway, 6th Ave, Colfax



Floorplan:



Contact Us

Melanie Davis

Vice President

+1 303 810 0956

melanie.davis@cbre.com

© 2025 CBRE, Inc. All rights reserved. This information has been obtained from sources believed reliable, but has not been verified for accuracy or completeness. You should conduct a careful, independent investigation of the property and verify all information. Any reliance on this information is solely at your own risk. CBRE and the CBRE logo are service marks of CBRE, Inc. All other marks displayed on this document are the property of their respective owners, and the use of such logos does not imply any affiliation with or endorsement of CBRE. Photos herein are the property of their respective owners. Use of these images without the express written consent of the owner is prohibited.