

CORNERSTONE PLAZA

23647-23881 Greenfield Road / Southfield, MI



MID-AMERICA®
Real Estate-Michigan, Inc.

AVAILABLE NOW



RETAIL OPPORTUNITY

CORNERSTONE PLAZA



Address

23647-23881 Greenfield Road
Southfield, MI 48075

Availability

Inline:

- 1,800 SF
- 4,000 SF (Former Restaurant)
- 4,000 SF

Outlots:

- 5,000 SF

Features

Redevelopment is now complete with the addition of Burlington, Ross and Five Below. This 127,710 SF neighborhood, power center now boasts a very strong soft good line up, driving traffic and creating an enhanced tenant mix. In addition to a new, national tenant line up, there are two out lots available for lease, including a drive-thru opportunity.

Cornerstone Plaza is situated just north of Providence Hospital, a 459-bed healthcare facility with approximately 2,900 employees. The property is also located in close proximity to the new Northland City Center redevelopment, a \$403M development with 1,500 residential units and additional commercial space.

Co-Tenants



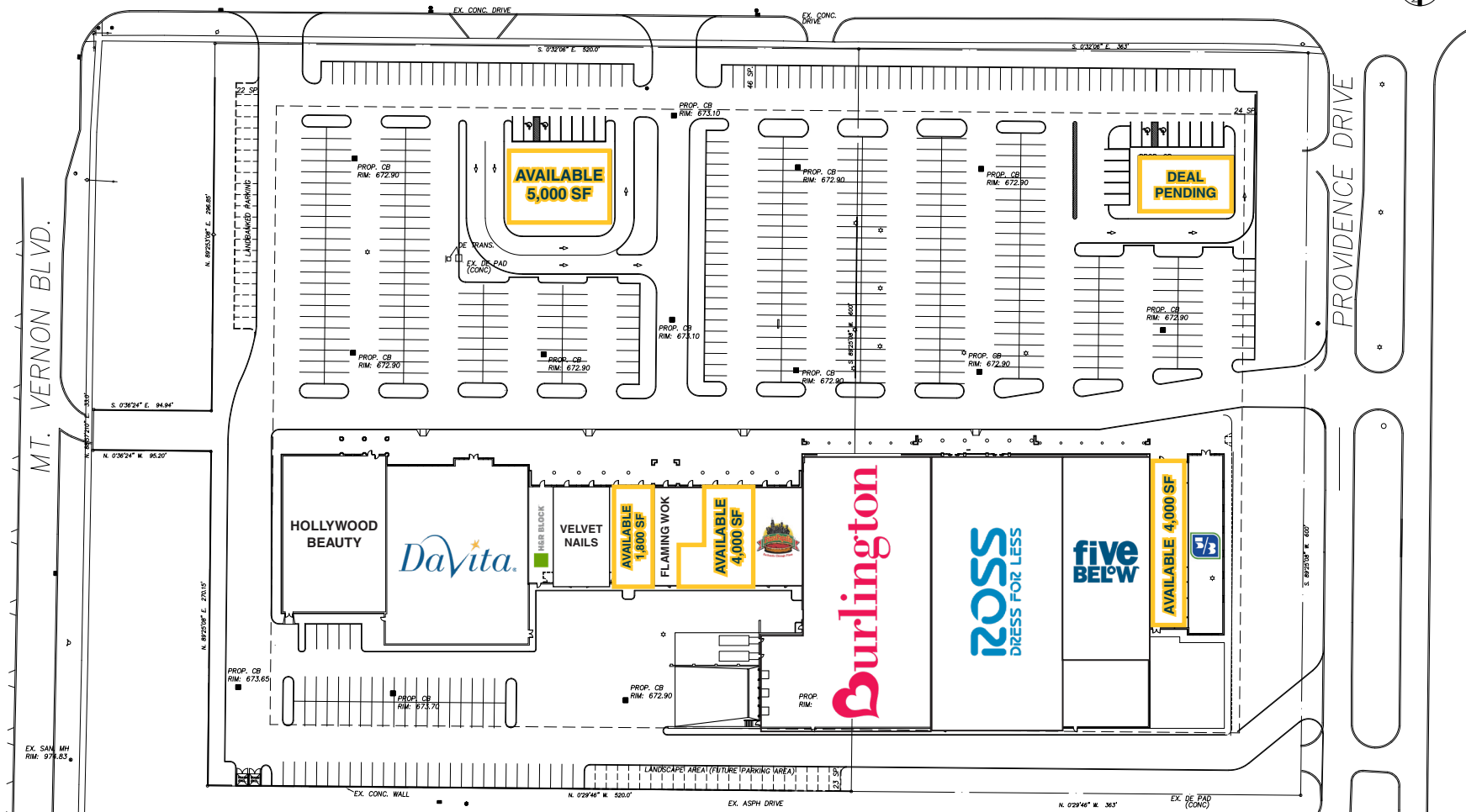
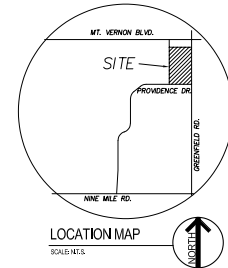
Demographics (2025)

	1 MILE	3 MILES	5 MILES
POPULATION	19,716	132,367	364,489
HOUSEHOLDS	8,848	56,766	163,085
AVG HOUSEHOLD INCOME	\$73,779	\$94,562	\$95,531
DAYTIME POPULATION	20,606	135,195	364,649

CORNERSTONE PLAZA



GREENFIELD ROAD

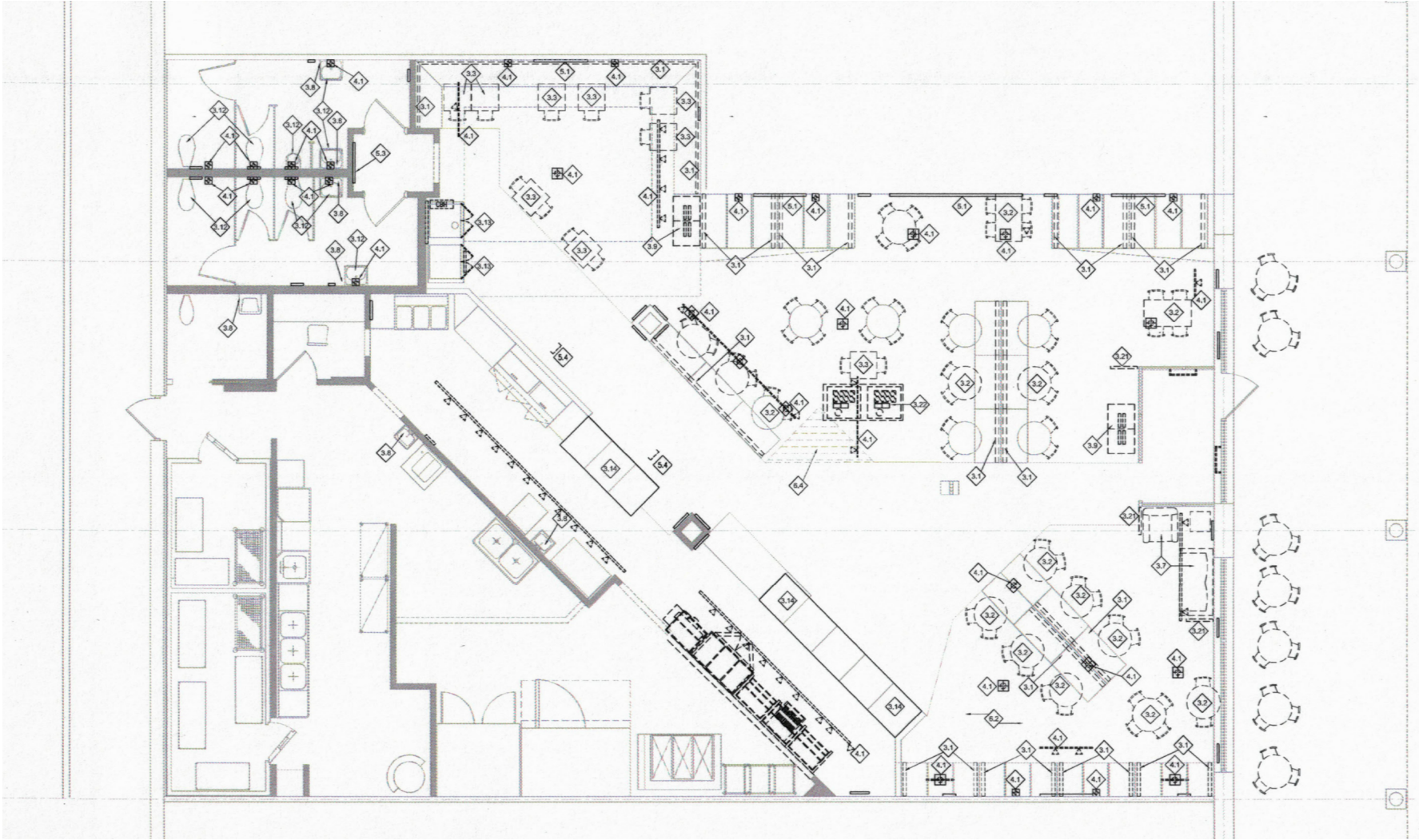


1 SITE PLAN
SP001 SCALE: 1" = 40'-0"



SITE PLAN

CORNERSTONE PLAZA



TURNKEY RESTAURANT

CORNERSTONE PLAZA



MID-LEVEL AERIAL

CORNERSTONE PLAZA



Brooke
Wolf

Mid-America Real Estate -
Michigan, Inc.

T: 248.855.6800

BWolf@MidAmericaGrp.com

Eric
Unatin

Mid-America Real Estate -
Michigan, Inc.

T: 248.855.6800

EUnatin@MidAmericaGrp.com



38500 Woodward Ave, Suite 100
Bloomfield Hills, Michigan 48304
248.855.6800

MidAmericaGrp.com

CONTACT