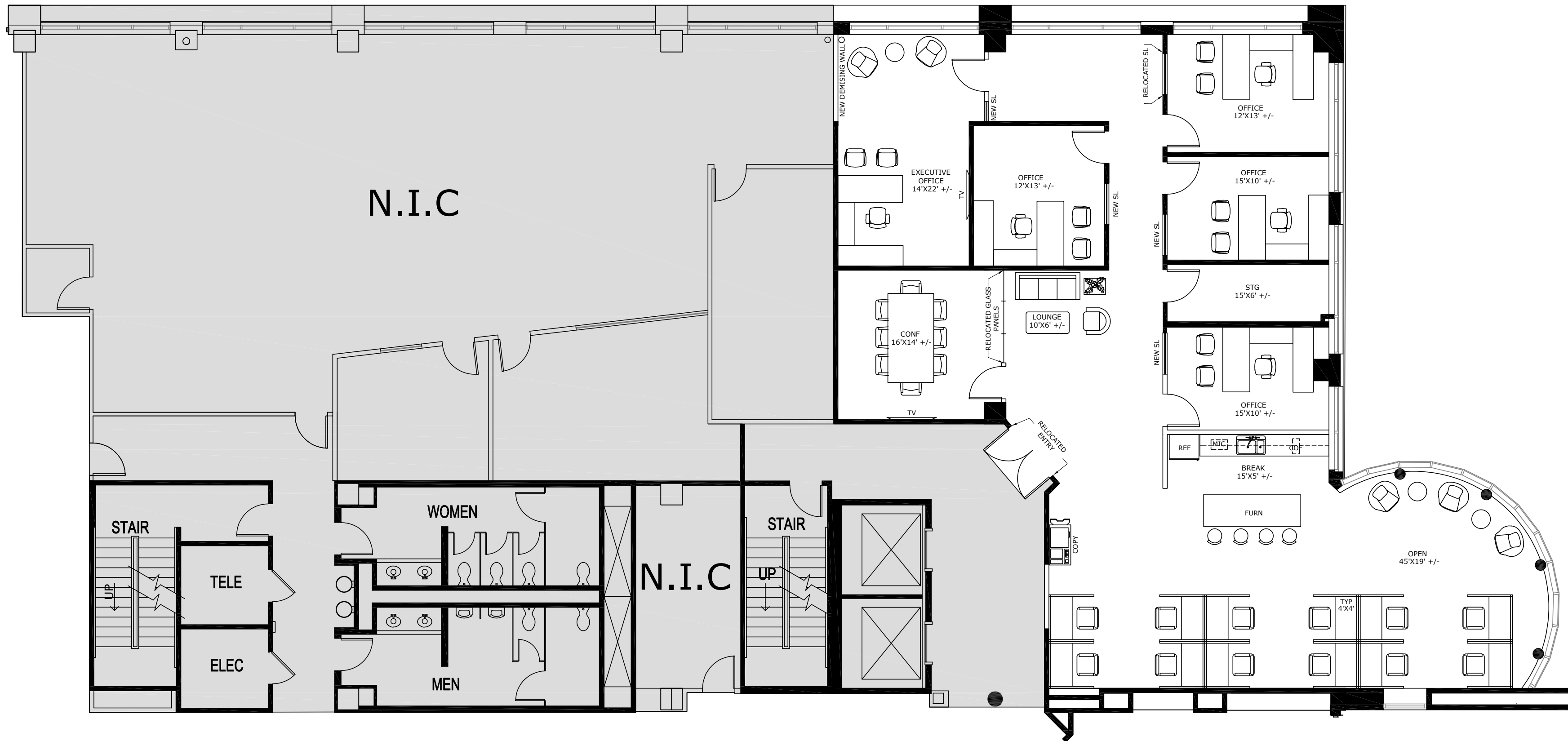


KEY PLAN



PROPOSED FACILITY FOR:
SPEC SUITE 200
4228 N. CENTRAL EXPY
FLOOR 2, SUITE 200
DALLAS, TEXAS 75206

PRELIMINARY PLAN NOT FOR REGULATORY APPROVAL, PRICING BY GENERAL CONTRACTORS, PERMITTING, OR CONSTRUCTION. SITE HAS NOT BEEN FIELD VERIFIED FOR EXISTING CONDITIONS. NOTES LISTED ARE SPECIFIC TO REQUESTS MADE FROM CLIENT AND NOT SUITE STATUS. ROOM SIZES ARE APPROXIMATE, AND ARE NOT INTENDED TO BE USED FOR FINAL DETERMINATION OF FURNITURE SIZES, PLACEMENT OR EXACT SQUARE FOOTAGE OF EACH ROOM.

Drawing Log		
No.	Description	Date
1	SP	07-08-25
1	SP REV #1	07-11-25

PROJECT #: 1216.2501
RSF: 3,266

FILE LOCATION:
I:\WORK\ACT_DOCUMENTS\DRAWINGS - REV\4228
SUITE 200 - CONSTRUCTION PROJECT PRELIM\SP
SUITE - SUITE 200 - SP - 7.8.25.DWG

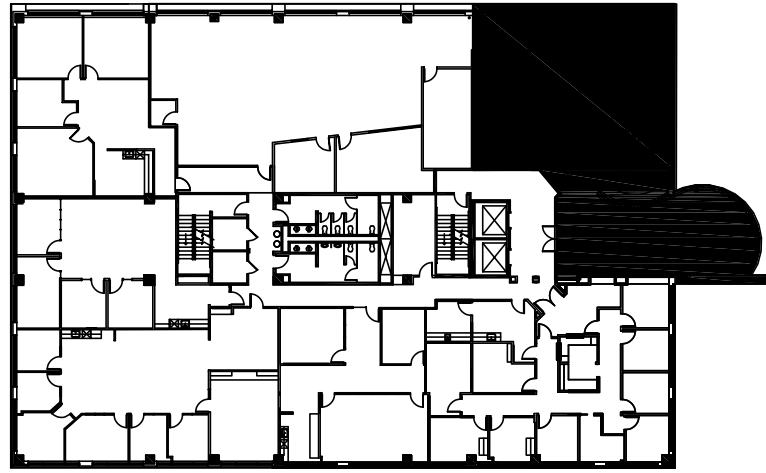
DRAWN BY: BK/ED
1/8" = 1'-0"
(ON 18X24 PAPER ONLY)

SPACE PLAN

SP

1 OF 2 PAGES

WALL NOTES	
BY SYMBOL	EXISTING BLD STD INTERIOR PARTITION TO REMAIN.
BY SYMBOL	NEW BLD STD INTERIOR PARTITION TO CEILING.
BY SYMBOL	NEW BLD STD LOW HEIGHT INTERIOR PARTITION (PROVIDE NEW X" W STONE/WOOD/PLAM TOP CAP.)
BY SYMBOL	NEW BLD STD SIDELITE
GLASS & GLAZING NOTES	
BY SYMBOL	NEW BLD STD SIDELITE



KEY PLAN



PROPOSED FACILITY FOR:
SPEC SUITE 200
 4228 N. CENTRAL EXPY
 FLOOR 2, SUITE 200
 DALLAS, TEXAS 75206

PRELIMINARY PLAN NOT FOR REGULATORY APPROVAL, PRICING BY GENERAL CONTRACTORS, PERMITTING, OR CONSTRUCTION. SITE HAS NOT BEEN FIELD VERIFIED FOR EXISTING CONDITIONS. NOTES LISTED ARE SPECIFIC TO REQUESTS MADE FROM CLIENT AND NOT SUITE STATUS. ROOM SIZES ARE APPROXIMATE, AND ARE NOT INTENDED TO BE USED FOR FINAL DETERMINATION OF FURNITURE SIZES, PLACEMENT OR EXACT SQUARE FOOTAGE OF EACH ROOM.

Drawing Log		
No.	Description	Date
1	SP	07-08-25
1	SP REV #1	07-11-25

PROJECT #: 1216.2501
 RSF: 3,266

FILE LOCATION:
 I:\PROJECTS\2025\1216.2501\1216.2501 - SPEC SUITE 200 - SP - 7.8.25.DWG

DRAWN BY: BK/ED
 1/8" = 1'-0"
 (ON 18X24 PAPER ONLY)

DEMO PLAN
DP
 2 OF 2 PAGES

WALL TYPES - DEMOLITION	
-----	EXISTING ITEM OR PARTITION TO BE DEMOLISHED U.N.O.
=====	EXISTING PARTITION TO REMAIN