



1044 Central St #103

STOUGHTON, MA

OFFICE SPACE | 756 SQFT



THE PROSPERITY
GROUP

COMMERCIAL

1044 Central St # 103 Stoughton



\$149,000.00

List Price

\$147.96

Price Per Sq Ft

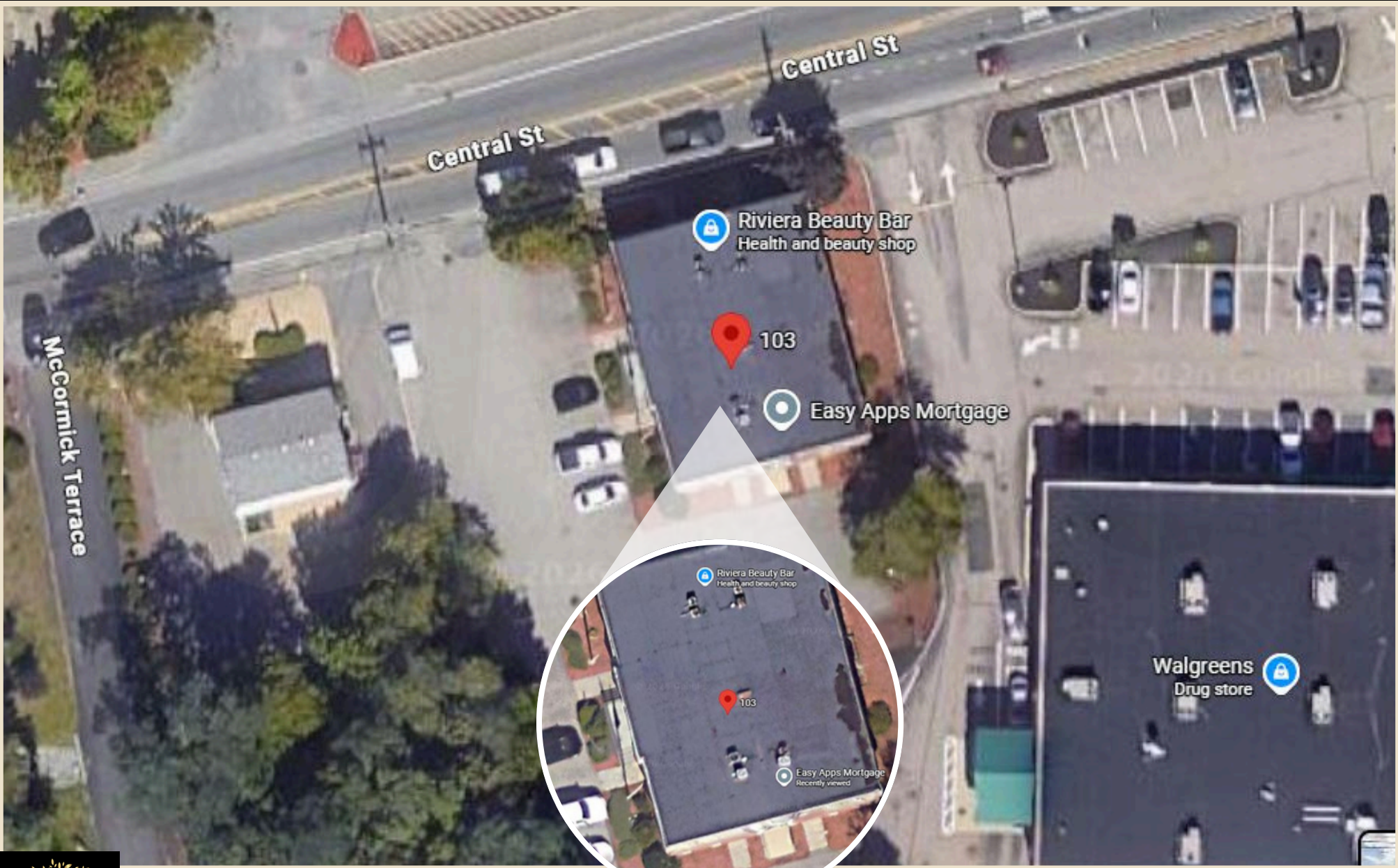
1974

Year Built

**AFFORDABLE &
CONVENIENT
STOUGHTON CONDO
OPPORTUNITY**



THE PROSPERITY
GROUP
COMMERCIAL



Central St

McCormick Terrace

Riviera Beauty Bar
Health and beauty shop

103

Easy Apps Mortgage

Walgreens
Drug store

Riviera Beauty Bar
Health and beauty shop

103

Easy Apps Mortgage
Recently viewed



THE PROSPERITY
GROUP
COMMERCIAL

Parcel Map



LOT SIZE

0.42 acres

ZONING CODE

GB

PARKING RATIO

2.37/1,000 SF

PROPERTY TYPE

Office



PROPERTY DETAILS

Property Address	1044 Central St Unit 103 Stoughton, MA
Unit Number	103
Property Type	Office
Year Built	1974
Building Class	C
Land Area	0.42 Acres (18295 SqFt)
Zoning	GB, Stoughton
APN / Parcel ID	STOU-000051-000176
Parking Ratio	2.5/1,000 SqFt

BUILDING CONSTRUCTION

Exterior	Concrete Block
Roof	Flat

BUILDING UTILITIES

Heating	Natural Gas
Cooling	Central
Hot Water	Electric
Electric	Separately Metered

Property Overview

Welcome to 1044 Central Street #103 in Stoughton — a well-located residential unit offering convenience, accessibility, and value in a desirable Norfolk County location. This approximately 755± square foot home features an efficient layout ideal for owner-occupants or investors seeking low-maintenance living.

Conveniently situated near local shopping, restaurants, parks, and major commuter routes, the property provides easy access to surrounding communities and Greater Boston. Residents benefit from proximity to local schools including Wilkins Elementary School, O'Donnell Middle School, and Stoughton High School.

Whether you are looking for an affordable homeownership opportunity, downsizing option, or investment property, this centrally located unit offers strong potential in an established residential community.

Property Highlights

AFFORDABLE OWNERSHIP OPPORTUNITY

Excellent option for first-time homebuyers, downsizers, or investors seeking value in a desirable Norfolk County location.

STRONG INVESTMENT POTENTIAL

Ideal for rental income or long-term portfolio growth in a consistently sought-after market.

CLOSE TO EVERYDAY AMENITIES

Minutes from shopping centers, restaurants, grocery stores, and local services.

LOW-MAINTENANCE CONDO LIVING

Efficient and functional layout designed for comfortable everyday living with minimal upkeep.

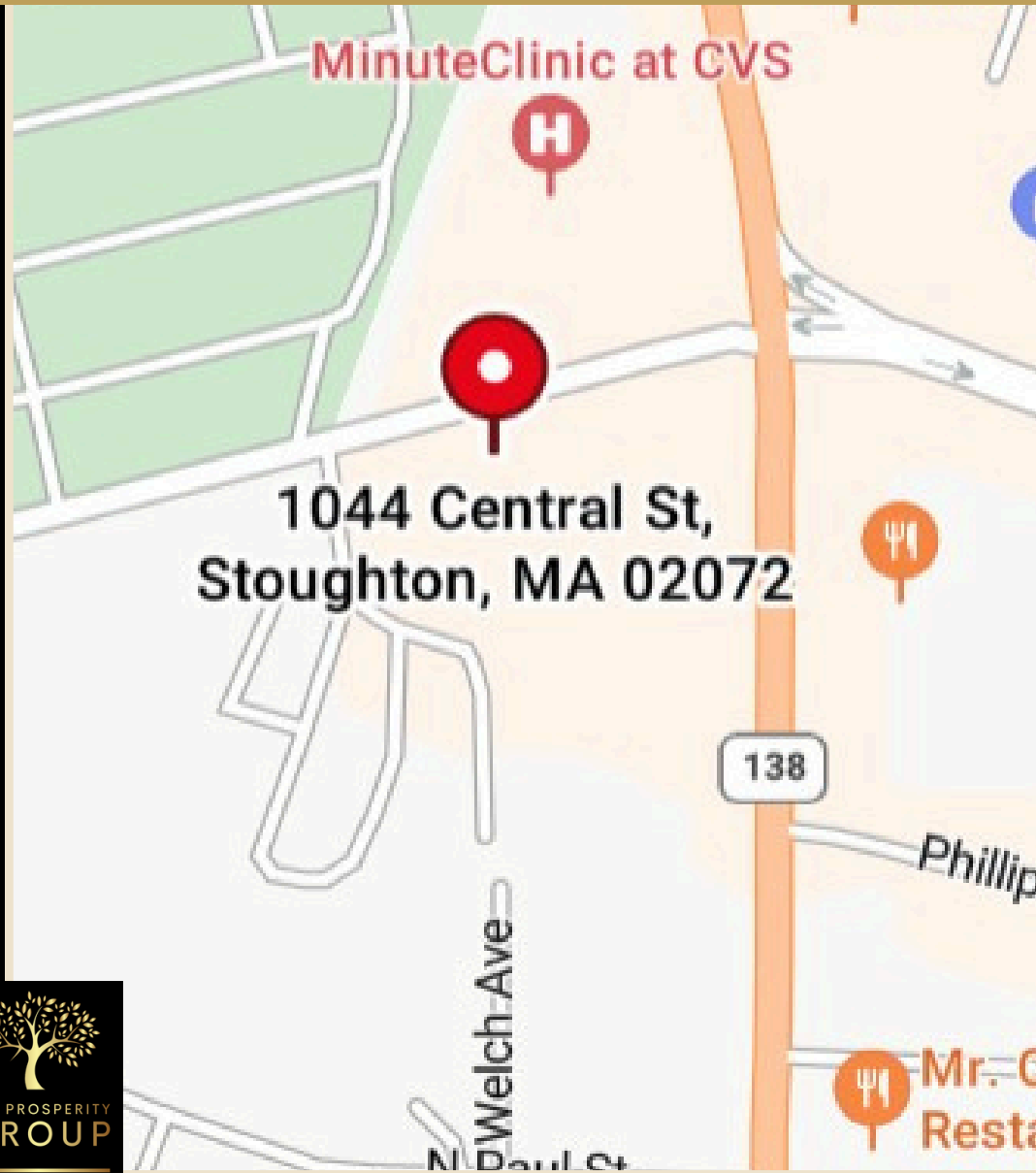
CONVENIENT COMMUTER LOCATION

Easy access to Route 24, I-93, MBTA Commuter Rail, and surrounding Greater Boston communities.

APPROXIMATELY 755± SF

Well-utilized interior space offering flexibility and practicality.

Convenient Commuter Access



Strategically located along Central Street in Stoughton, the property offers easy access to Route 24, I-93, and surrounding Greater Boston communities. Nearby MBTA Commuter Rail service provides convenient transportation to Downtown Boston, while local shopping, dining, and everyday amenities are just minutes away.

ROUTE 24: APPROX. 2 MILES
I-93: APPROX. 8 MILES
STOUGHTON MBTA COMMUTER RAIL: APPROX. 2 MILES
COBB CORNER: APPROX. 4 MILES
BRAINTREE: APPROX. 10 MILES
DEDHAM: APPROX. 12 MILES
DT BOSTON: APPROX. 18 MILES



Location Overview

Stoughton is a suburban town of roughly 29,000 residents located in Norfolk County, about 17 miles south of Boston and within commuting distance of both Providence and Cape Cod. It covers about 16 square miles and is bordered by Canton, Sharon, Avon, and Brockton. It blends its early New England history—dating back to its settlement in 1713 and incorporation in 1726—with the character of a modern residential community.

Once an agricultural and shoemaking center, Stoughton has evolved into a diversified local economy supported by trade, services, light manufacturing, and healthcare, with a median household income of around \$104,794 and a population that is 26% foreign-born, reflecting a notably diverse community. The town is also home to the Old Stoughton Musical Society, the oldest choral society in the United States, founded in 1786, which highlights its deep cultural roots.

Residents benefit from convenient MBTA commuter rail access, strong public schools, and a range of parks and recreational amenities, contributing to Stoughton's appeal as a stable, family-oriented community with close ties to Greater Boston.







2024 TOTAL
POPULATION
(WITHIN 1 MILE)

7,936

AVERAGE
AGE

44

MEDIAN
HOUSEHOLD
INCOME

\$119,274

WALK
SCORE

50

TRANSIT
SCORE

30

BIKE
SCORE

50

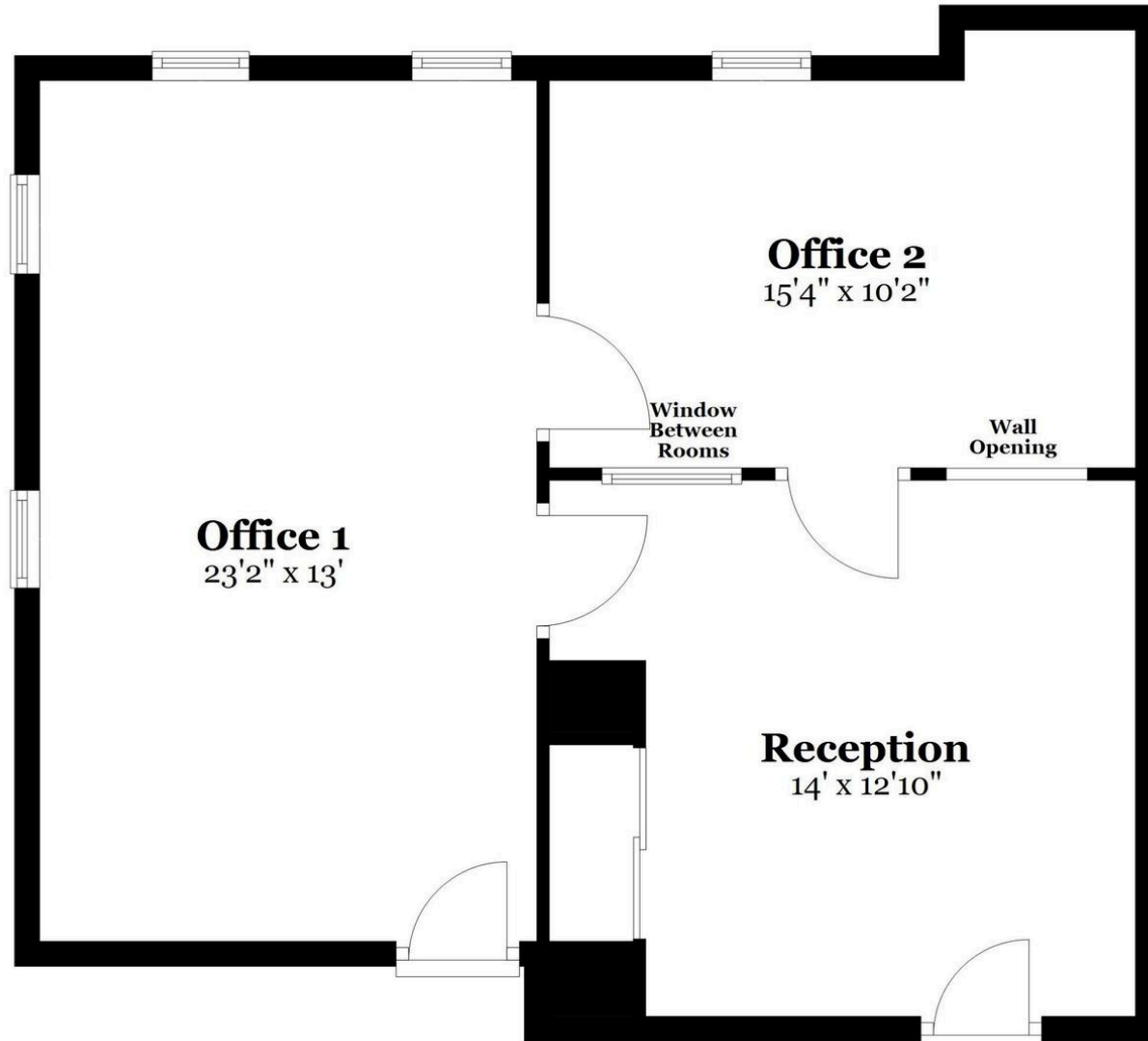






First Floor - 7'8" Ceilings

Approx. 691.6 sq. feet



1044 Central St Unit 103

STOUGHTON MA

CONTACT US



SHANNON HENDERSON

theprospertygroup.us@gmail.com
617.710.0929



THE PROSPERITY
GROUP

COMMERCIAL

WWW.THEPROSPERITYGROUP.US