



25

FITZGERALD
NEPEAN, ONTARIO

FOR LEASE

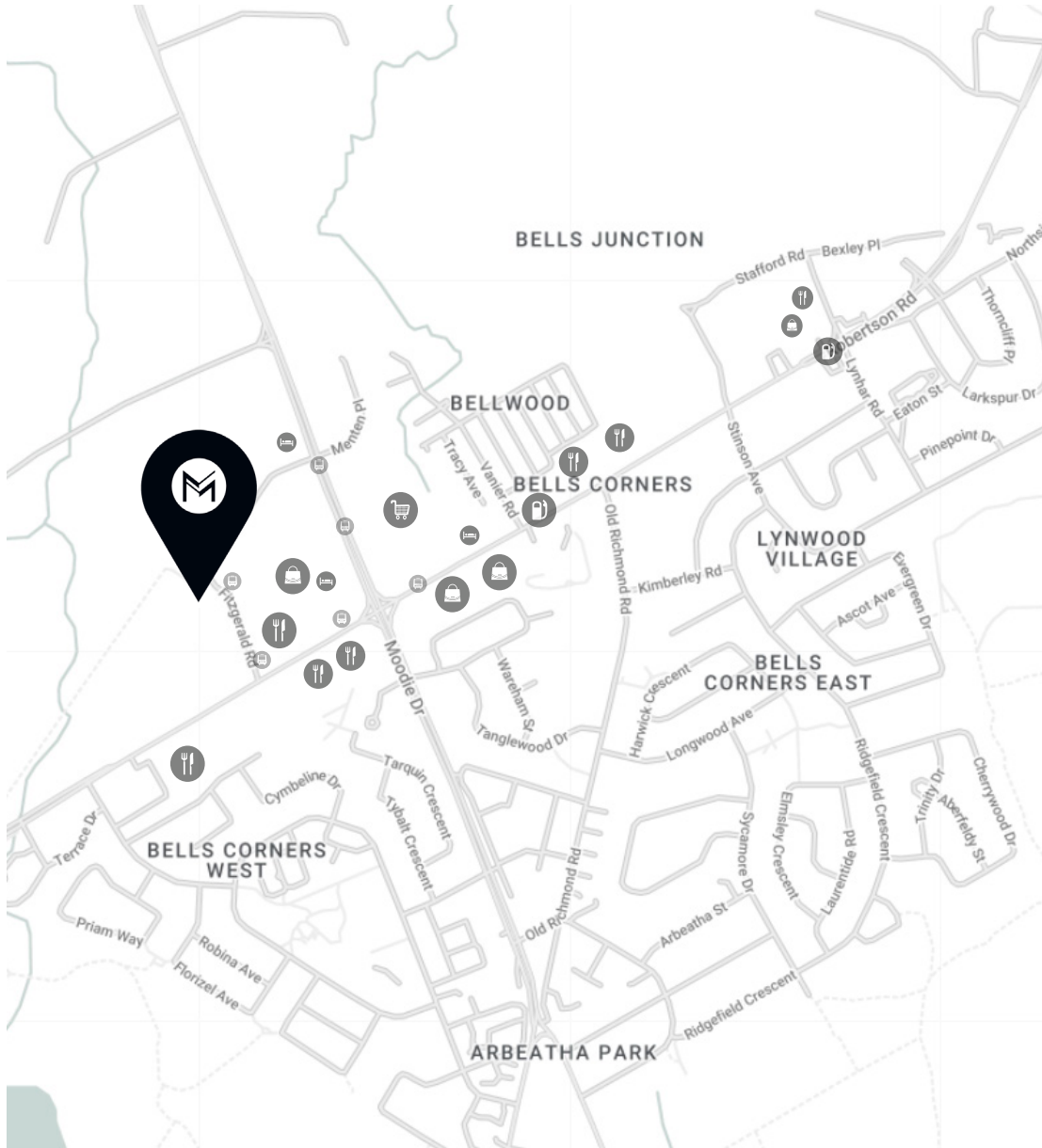
AVAILABILITIES

Suite 150 = 6,953 sq.ft.

MACH

PROPERTY

SURROUNDING AREAS



25 FITZGERALD, NEPEAN

NET RENT	CAM	TAXES	TOTAL ADDITIONAL RENT
Please contact agent	\$10.93	\$5.04	\$15.97

FEATURES	
Year built	1998
Building type	Office
Number of floors	5-storey
Floor area	113,763 sq. ft.
Parking space	461 outdoor spaces at \$74.35 HST included
Parking ratio	4/1,000 sq. ft.
Fire protection	Edwards E.S.T. 2. Panel, sprinklers and smoke detectors throughout office space; Mitsubishi 1250 KUA Generator
Elevator	Two passenger elevators
Public transit	Public transit nearby
Certification	BOMA BEST Certified GREEN (Best Practices).

LEASING INQUIRY

John Esposito

Senior Director of Leasing

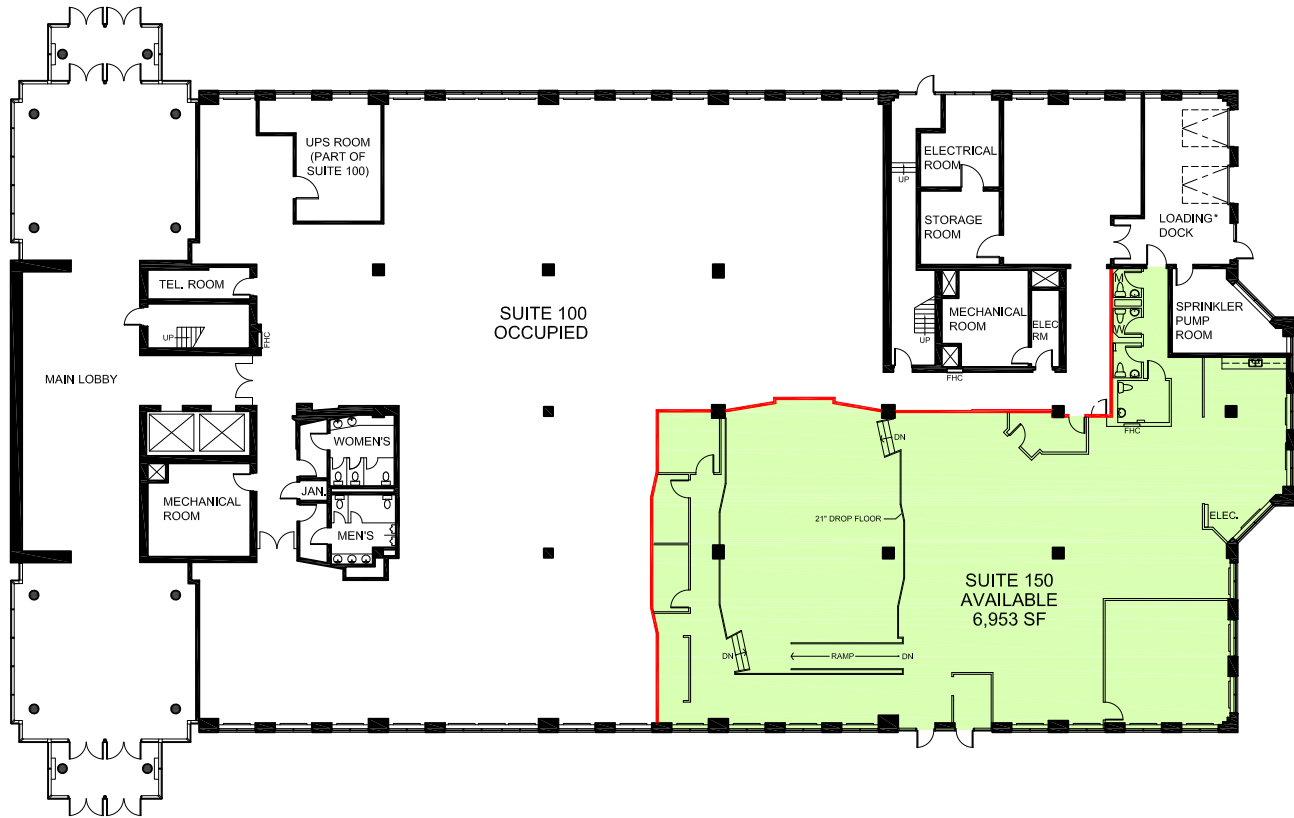
jesposito@groupemach.com

Max Francischiello, MBA

Senior Vice-President, Leasing

mfrancischiello@groupemach.com

FLOOR PLAN



AVAILABLE

RENTABLE AREA NOTED (SF)
AS PER ANSI/BOMA Z65.1 1996

DEMISING WALL

0 10 50 FT.



CONTACT US
FOR LEASING OPPORTUNITIES
(613) 565-4848