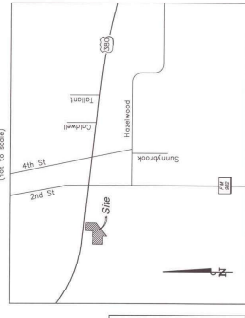
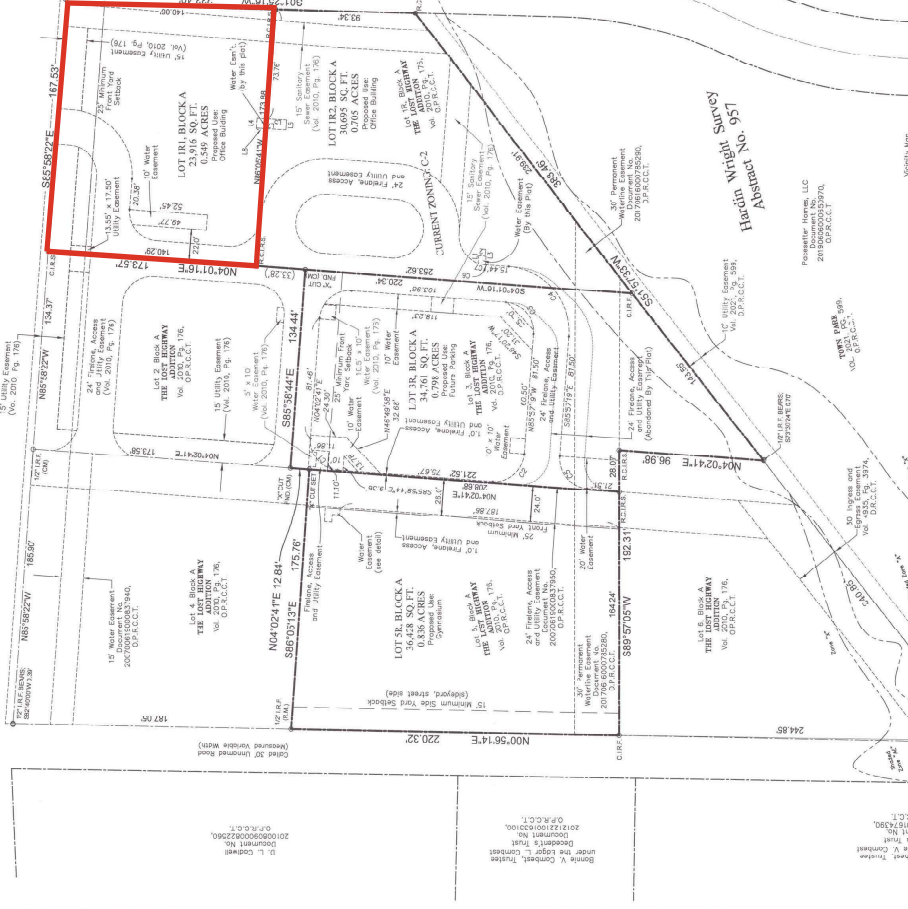


UNOFFICIAL COPY

STATE OF TEXAS, COUNTY OF COLLIN, NOW THEREFORE, KNOW ALL MEN BY THESE PRESENTS:

That, GNV Property, LLC, Last Highway, Assoc. Co., LLC, and TERRY, LLC are the owners of the above described property...

U.S. Highway No. 380 (cont'd 140 981-9-1-03)



ABBREVIATIONS: I.B.F. = iron rod found, C.I.R.E.S. = Corrosion Resistant Iron Rod Set, etc.

NOTICE TO CONTRACTORS: Under the Public Works Contract, the Contractor shall be responsible for the location of all monuments...

OWNERS CERTIFICATE

STATE OF TEXAS, COUNTY OF COLLIN

Being a tract of land situated in the City of Princeton, Collin County, Texas, being part of the Harwin Wright Survey...

FRANCE North 070201' East, along the common line between said Lot 3 and Lot 4, a distance of 124.84'...

FRANCE South 070201' East, along the common line between said Lot 3 and Lot 4, a distance of 124.84'...

FRANCE East 070201' East, along the common line between said Lot 3 and Lot 4, a distance of 124.84'...

FRANCE West 070201' West, along the common line between said Lot 3 and Lot 4, a distance of 124.84'...

FRANCE North 070201' East, along the common line between said Lot 3 and Lot 4, a distance of 124.84'...

FRANCE South 070201' East, along the common line between said Lot 3 and Lot 4, a distance of 124.84'...

FRANCE East 070201' East, along the common line between said Lot 3 and Lot 4, a distance of 124.84'...

FRANCE West 070201' West, along the common line between said Lot 3 and Lot 4, a distance of 124.84'...

FRANCE North 070201' East, along the common line between said Lot 3 and Lot 4, a distance of 124.84'...

FRANCE South 070201' East, along the common line between said Lot 3 and Lot 4, a distance of 124.84'...

FRANCE East 070201' East, along the common line between said Lot 3 and Lot 4, a distance of 124.84'...

FRANCE West 070201' West, along the common line between said Lot 3 and Lot 4, a distance of 124.84'...

FRANCE North 070201' East, along the common line between said Lot 3 and Lot 4, a distance of 124.84'...

FRANCE South 070201' East, along the common line between said Lot 3 and Lot 4, a distance of 124.84'...

FRANCE East 070201' East, along the common line between said Lot 3 and Lot 4, a distance of 124.84'...

FRANCE West 070201' West, along the common line between said Lot 3 and Lot 4, a distance of 124.84'...

FRANCE North 070201' East, along the common line between said Lot 3 and Lot 4, a distance of 124.84'...

FRANCE South 070201' East, along the common line between said Lot 3 and Lot 4, a distance of 124.84'...

FRANCE East 070201' East, along the common line between said Lot 3 and Lot 4, a distance of 124.84'...

FRANCE West 070201' West, along the common line between said Lot 3 and Lot 4, a distance of 124.84'...

FRANCE North 070201' East, along the common line between said Lot 3 and Lot 4, a distance of 124.84'...

FRANCE South 070201' East, along the common line between said Lot 3 and Lot 4, a distance of 124.84'...

FRANCE East 070201' East, along the common line between said Lot 3 and Lot 4, a distance of 124.84'...

FRANCE West 070201' West, along the common line between said Lot 3 and Lot 4, a distance of 124.84'...

FRANCE North 070201' East, along the common line between said Lot 3 and Lot 4, a distance of 124.84'...

FRANCE South 070201' East, along the common line between said Lot 3 and Lot 4, a distance of 124.84'...

FRANCE East 070201' East, along the common line between said Lot 3 and Lot 4, a distance of 124.84'...

FRANCE West 070201' West, along the common line between said Lot 3 and Lot 4, a distance of 124.84'...

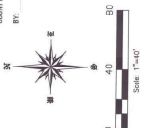
FRANCE North 070201' East, along the common line between said Lot 3 and Lot 4, a distance of 124.84'...

FRANCE South 070201' East, along the common line between said Lot 3 and Lot 4, a distance of 124.84'...

NOTICE

Notice to Contractors: Under the Public Works Contract, the Contractor shall be responsible for the location of all monuments...

CITY APPROVAL - APPROVED BY MAJOR PLAT PROCEDURE. Shawn Fort, Director - City of Princeton, Texas. Date: 6/28/2023.



REPLAT OF THE LOST HIGHWAY ADDITION BLOCKS LOTS 1R1, 1R2, 3R AND 5R BLOCKA HARWIN WRIGHT SURVEY, ABSTRACT NUMBER 947 CITY OF PRINCETON, COLLIN COUNTY, TEXAS



Current Zoning: C-2

R; /AC/202203/AC898031-CW3