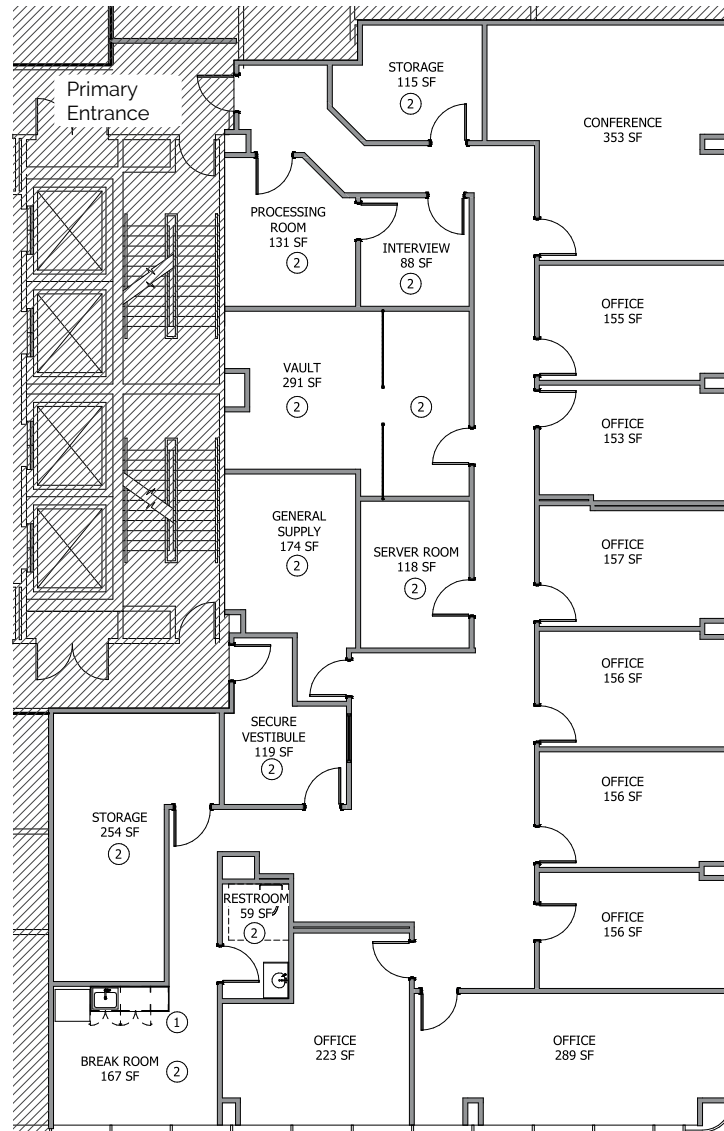




# FAIRWINDS TOWER

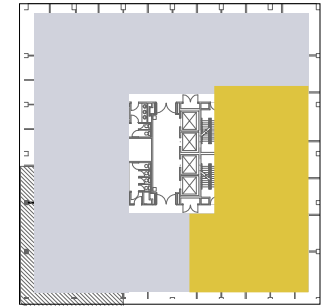
135 W. Central Blvd.  
Orlando, FL 32801



# Suite 740

4,656 RSF

Glass Window Line



Glass Window Line

## FOR LEASING INFORMATION:

**Micah Strader**  
Managing Director  
407.982.8688  
micah.strader@jll.com

**Madison Kimbell**  
Vice President  
407.982.8580  
madison.kimbell@jll.com



Although information has been obtained from sources deemed reliable, neither Owner nor JLL makes any guarantees, warranties or representations, express or implied, as to the completeness or accuracy as to the information contained herein. Any projections, opinions, assumptions or estimates used are for example only. There may be differences between projected and actual results, and those differences may be material. The Property may be withdrawn without notice. Neither Owner nor JLL accepts any liability for any loss or damage suffered by any party resulting from reliance on this information. If the recipient of this information has signed a confidentiality agreement regarding this matter, this information is subject to the terms of that agreement. ©2026 Jones Lang LaSalle Brokerage, Inc. All rights reserved.