

16900 W 118th St

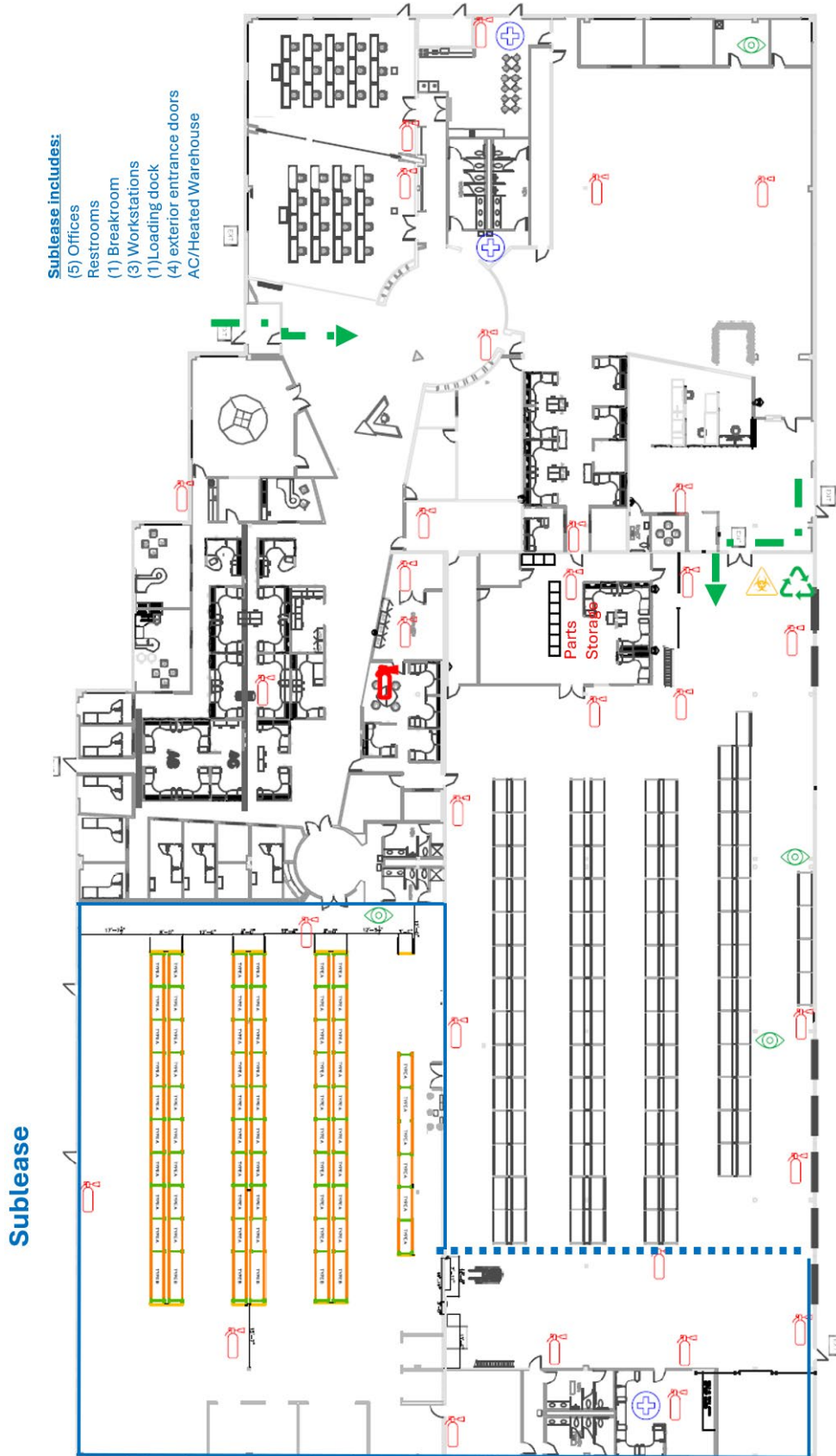
Olathe, KS



Property Highlights

- + ±16,000-±61,128 SF Available Immediately
- + ±1,000 SF Office (5 Private Offices and Break Room)
- + 23-26' Clear Height
- + Shared Dock Loading Access
- + Partial HVAC in Warehouse
- + Sublease Through 8/31/2029

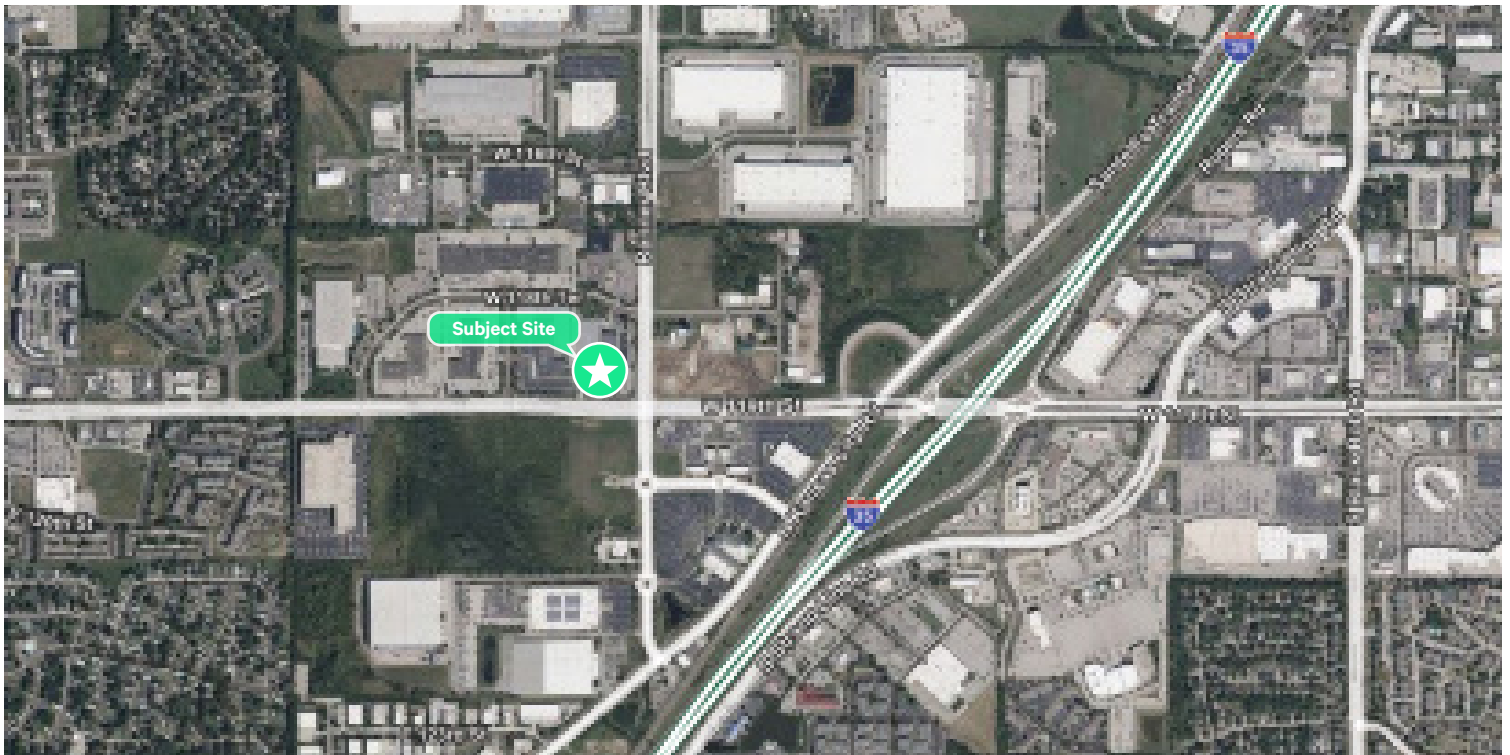
Floor Plan



Interior Photos



Aerial Map



Contact Us

Ben Whetstone
Senior Associate
C +1 816 289 2808
ben.whetstone@cbre.com

© 2026 CBRE, Inc. All rights reserved. This information has been obtained from sources believed reliable, but has not been verified for accuracy or completeness. You should conduct a careful, independent investigation of the property and verify all information. Any reliance on this information is solely at your own risk. CBRE and the CBRE logo are service marks of CBRE, Inc. All other marks displayed on this document are the property of their respective owners, and the use of such logos does not imply any affiliation with or endorsement of CBRE. Photos herein are the property of their respective owners. Use of these images without the express written consent of the owner is prohibited.