

450 N LINDENWOOD DRIVE

📍 OLATHE, KANSAS 66062

est. 1879

KH

KESSINGER HUNTER
commercial real estate



OFFICE/WAREHOUSE FOR SALE | 11,400± SF ON 0.92± ACRES

PROPERTY FEATURES

- ✓ 11,400± SF Building (Includes 1,200± SF upstairs office area with grade level man-door entrance on Lindenwood)
- ✓ Free Span Warehouse
- ✓ 15' 3" to x 17' Clear Height
- ✓ Four 12' W x 14' H Drive-In Doors
- ✓ One 8' x 8' Dock High Door
- ✓ 400-Amp, 240 V, 3-Phase Power
- ✓ Wet Sprinkler
- ✓ Rare Owner/User Purchase in Johnson County

QUICK FACTS

TOTAL SIZE	11,400± SF
LOT SIZE	0.92± Acres
SALE PRICE	\$1,750,000
TAXES (2025)	\$23,396.10
ZONING	M-2



For more information, please contact:

ANDY TAYLOR

Principal, Industrial Brokerage
816.812.7676
ataylor@kessingerhunter.com

MICHAEL WATSON

Principal, Industrial Brokerage & Land Sales
913.940.0223
mwatson@kessingerhunter.com

KESSINGER/HUNTER & COMPANY, LC

2600 Grand Boulevard, Suite 700
Kansas City, MO 64108
816.842.2690

www.kessingerhunter.com

Information subject to verification and no liability for errors or omissions is assumed. Price subject to change.
To unsubscribe, please click on the link khlistings@kessingerhunter.com. Flyer updated 6/22/26.

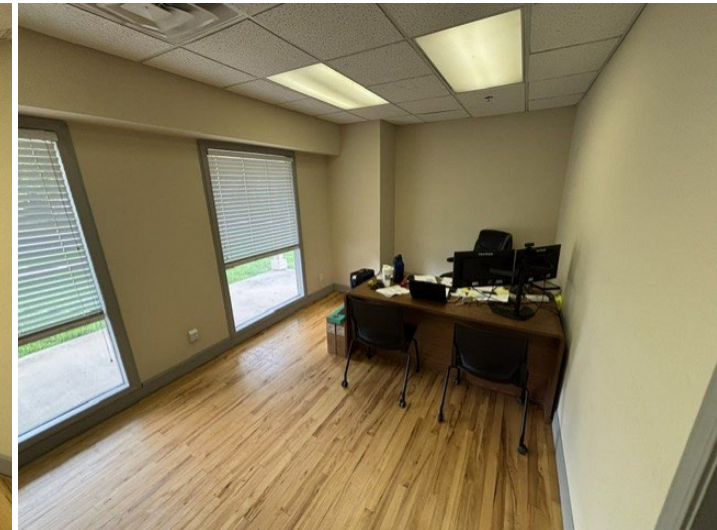
450 N LINDENWOOD
OLATHE, KANSAS 66062

est. 1879

KH



INTERIOR PHOTOS



For more information, please contact:

ANDY TAYLOR

Principal, Industrial Brokerage
816.812.7676
ataylor@kessingerhunter.com

MICHAEL WATSON

Principal, Industrial Brokerage & Land Sales
913.940.0223
mwatson@kessingerhunter.com

KESSINGER/HUNTER & COMPANY, LC

2600 Grand Boulevard, Suite 700
Kansas City, MO 64108
816.842.2690
www.kessingerhunter.com