

CENTRAL PARK EAST

FOR SUBLEASE



PROPERTY DETAILS

1815 South State Street, Suite 330, Orem, Utah 84097

- Suite 330: 4,124 SF
- Sublease Rate: \$19.00/SF Full Service
- Sublease Expiration: August 31, 2028
- Updated common area
- On-site fitness center with two racquetball courts, basketball, sauna and showers
- Close proximity to numerous amenities and food services
- Fiber optic connectivity
- Back up generation
- Abundant parking
- 9'+ ceilings
- Stunning views of the Provo valley and mountains

2025 DEMOS



EST. POPULATION

1 MILE » 000,000
3 MILE » 000,000
5 MILE » 000,000



EST. HOUSEHOLDS

1 MILE » 000,000
3 MILE » 000,000
5 MILE » 000,000



EST. AVERAGE HH INCOME

1 MILE » \$000,000
3 MILE » \$000,000
5 MILE » \$000,000

NEWMARK

MOUNTAIN WEST

SHAD WEBB
OWNER/AGENT
swebb@newmarkmw.com
direct 435.459.0212
[View Profile](#)

CODY BLACK
OWNER/AGENT
Summit Commercial Advisors
cody@summitutahcre.com
801.687.0094



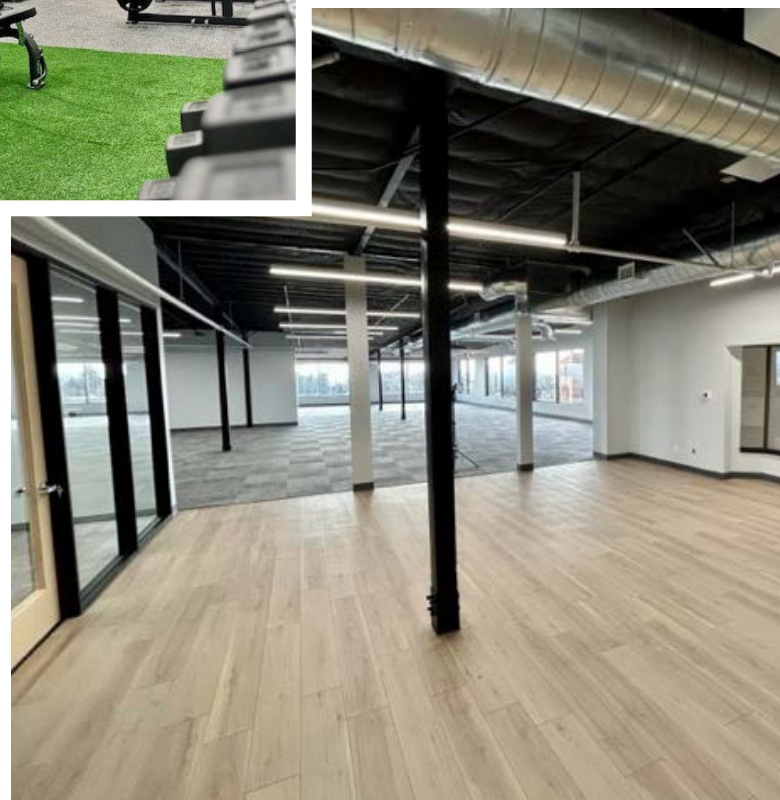
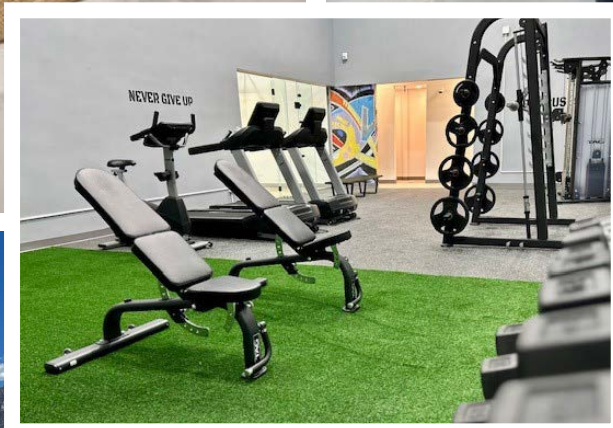
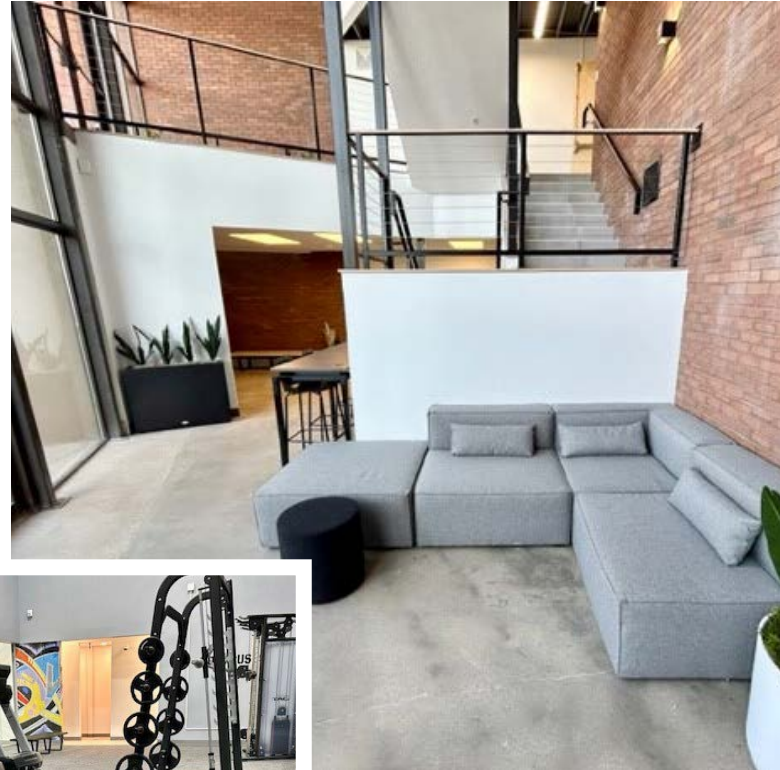
**FULL SERVICE
COMMERCIAL REAL ESTATE**
312 East South Temple
Salt Lake City, Utah 84111
Office 801.456.8800
www.newmarkmw.com

NEWMARK

 MOUNTAIN WEST

SHAD WEBB
OWNER/AGENT
swebb@newmarkmw.com
direct 435.459.0212
[View Profile](#)

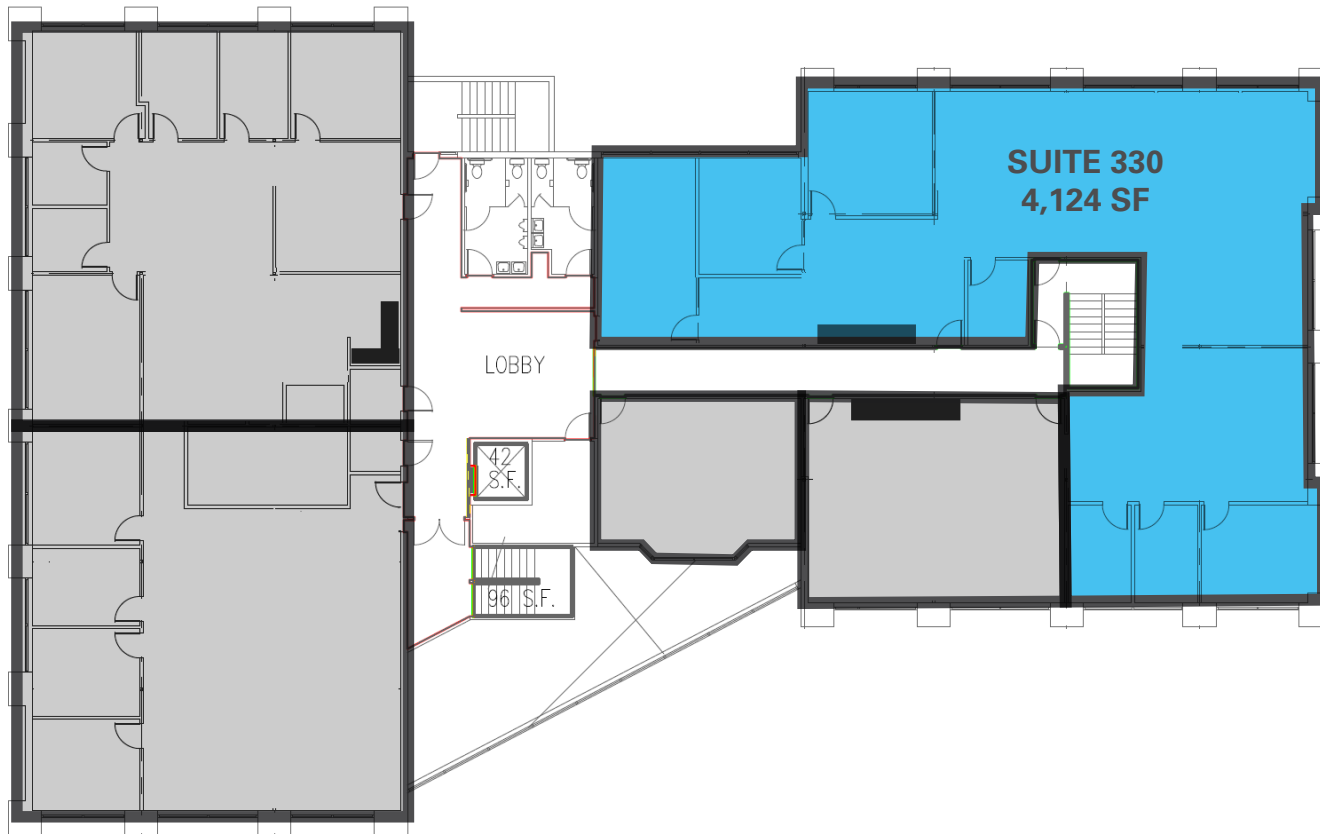
CODY BLACK
OWNER/AGENT
Summit Commercial Advisors
cody@summitutahcre.com
801.687.0094



**FULL SERVICE
COMMERCIAL REAL ESTATE**
312 East South Temple
Salt Lake City, Utah 84111
Office 801.456.8800
www.newmarkmw.com

SITE PLAN

CENTRAL PARK WEST



■ LEASED
■ AVAILABLE

NEWMARK

MOUNTAIN WEST

SHAD WEBB
OWNER/AGENT
swebb@newmarkmw.com
direct 435.459.0212
[View Profile](#)

CODY BLACK
OWNER/AGENT
Summit Commercial Advisors
cody@summitutahcre.com
801.687.0094



**FULL SERVICE
COMMERCIAL REAL ESTATE**
312 East South Temple
Salt Lake City, Utah 84111
Office 801.456.8800
www.newmarkmw.com

