

36555 AMRHEIN ROAD  
LIVONIA, MICHIGAN



**SIGNATURE  
ASSOCIATES**  
KNOW SIGNATURE | KNOW RESULTS

**INDUSTRIAL FOR SALE**  
147,000 Square Feet on 12.49 Acres

**OUTSTANDING CRANE FACILITY**



## PROPERTY FEATURES

- 147,000 square feet with 8,125 square feet office
- 12.49 acres of industrially zoned land
- (3) crane bays: 65' wide, 25' clear height
- (1) crane bay: 60' wide, 35' clear height
- (10) interior 10-ton cranes
- (1) exterior 20-ton gantry crane
- Deisel powered generator
- Two drive through offloading bays
- 1500 amps, 240/480 volts, 3-phase power (estimated)
- Several private offices and cubicles
- Near I-96/I-275/M-14 interchanges
- Sale Price: \$11,025,000 (\$75.00/sq. ft.)



For more information, please contact:

**STEVE GORDON**  
(248) 948 0101  
sgordon@signatureassociates.com

**JACK TOWNSEND**  
(248) 948 0115  
jtownsend@signatureassociates.com

**SIGNATURE ASSOCIATES**  
One Towne Square, Suite 1200  
Southfield, MI 48076  
www.signatureassociates.com

# 36555 Amrhein Road – Livonia, Michigan

## Industrial For Sale

147,000  
Square Feet  
AVAILABLE

### Additional Photos



For more information, please contact:

**STEVE GORDON**  
(248) 948 0101  
sgordon@signatureassociates.com

**JACK TOWNSEND**  
(248) 948 0115  
jtowndsend@signatureassociates.com

**SIGNATURE ASSOCIATES**  
One Towne Square, Suite 1200  
Southfield, MI 48076  
www.signatureassociates.com

# 36555 Amrhein Road – Livonia, Michigan

## Industrial For Sale

147,000  
Square Feet  
AVAILABLE

### Additional Photos



For more information, please contact:

**STEVE GORDON**  
(248) 948 0101  
sgordon@signatureassociates.com

**JACK TOWNSEND**  
(248) 948 0115  
jtownsend@signatureassociates.com

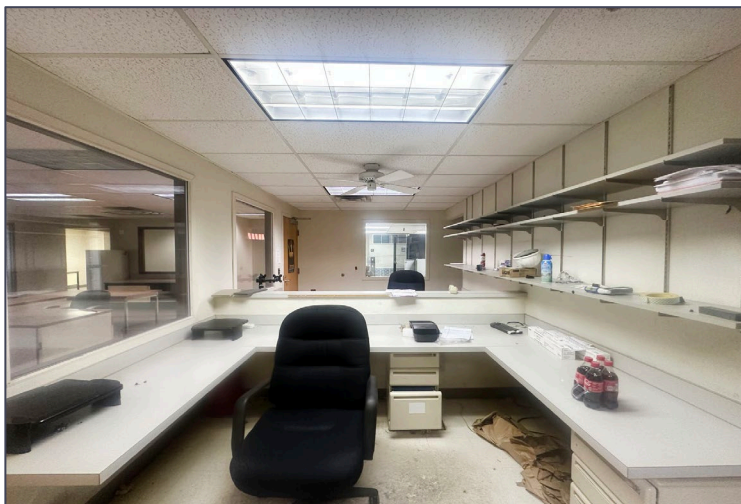
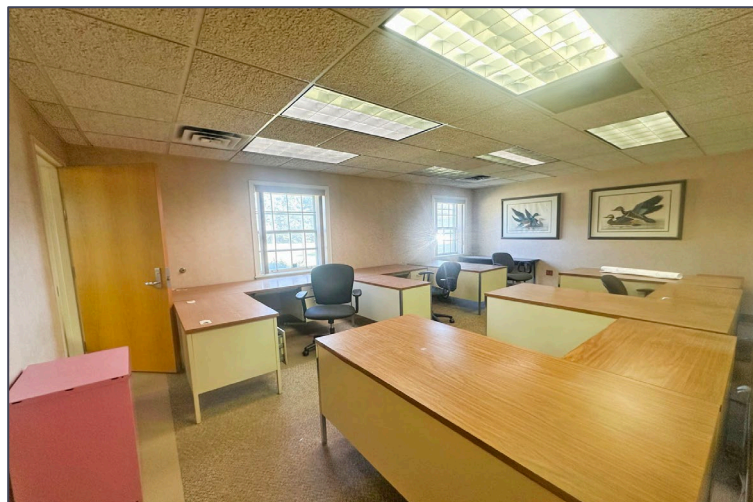
**SIGNATURE ASSOCIATES**  
One Towne Square, Suite 1200  
Southfield, MI 48076  
www.signatureassociates.com

# 36555 Amrhein Road – Livonia, Michigan

## Industrial For Sale

147,000  
Square Feet  
AVAILABLE

### Interior Photos



For more information, please contact:

**STEVE GORDON**  
(248) 948 0101  
sgordon@signatureassociates.com

**JACK TOWNSEND**  
(248) 948 0115  
jtownsend@signatureassociates.com

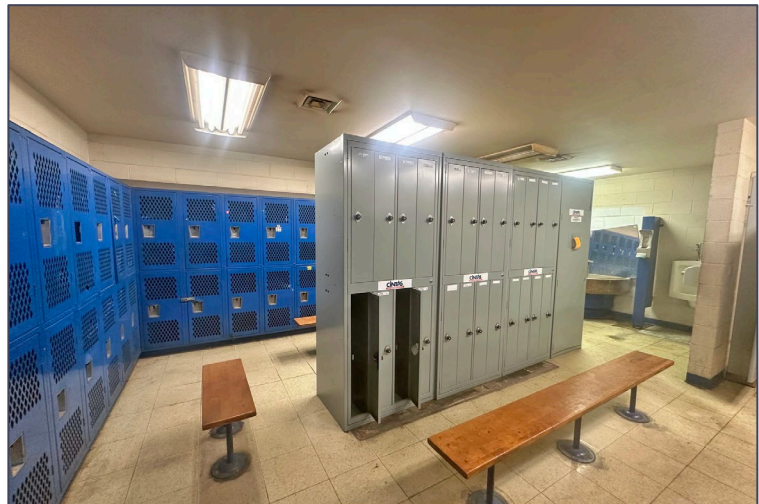
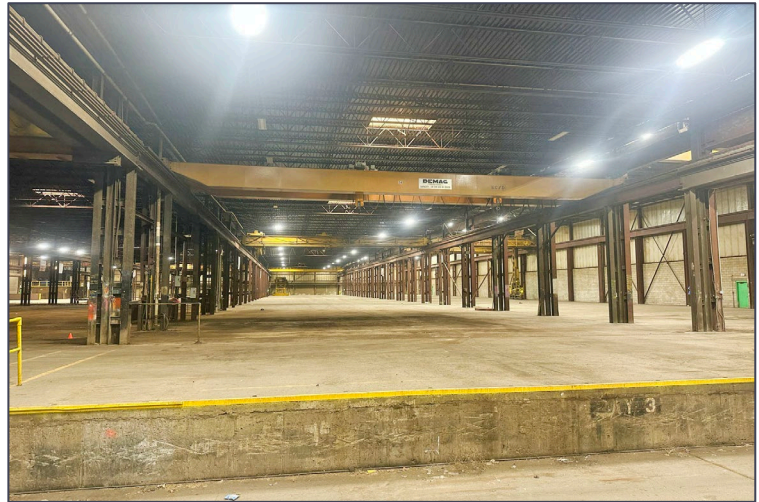
**SIGNATURE ASSOCIATES**  
One Towne Square, Suite 1200  
Southfield, MI 48076  
www.signatureassociates.com

# 36555 Amrhein Road – Livonia, Michigan

## Industrial For Sale or Lease

147,000  
Square Feet  
AVAILABLE

### Interior Photos



For more information, please contact:

**STEVE GORDON**  
(248) 948 0101  
sgordon@signatureassociates.com

**JACK TOWNSEND**  
(248) 948 0115  
jtownsend@signatureassociates.com

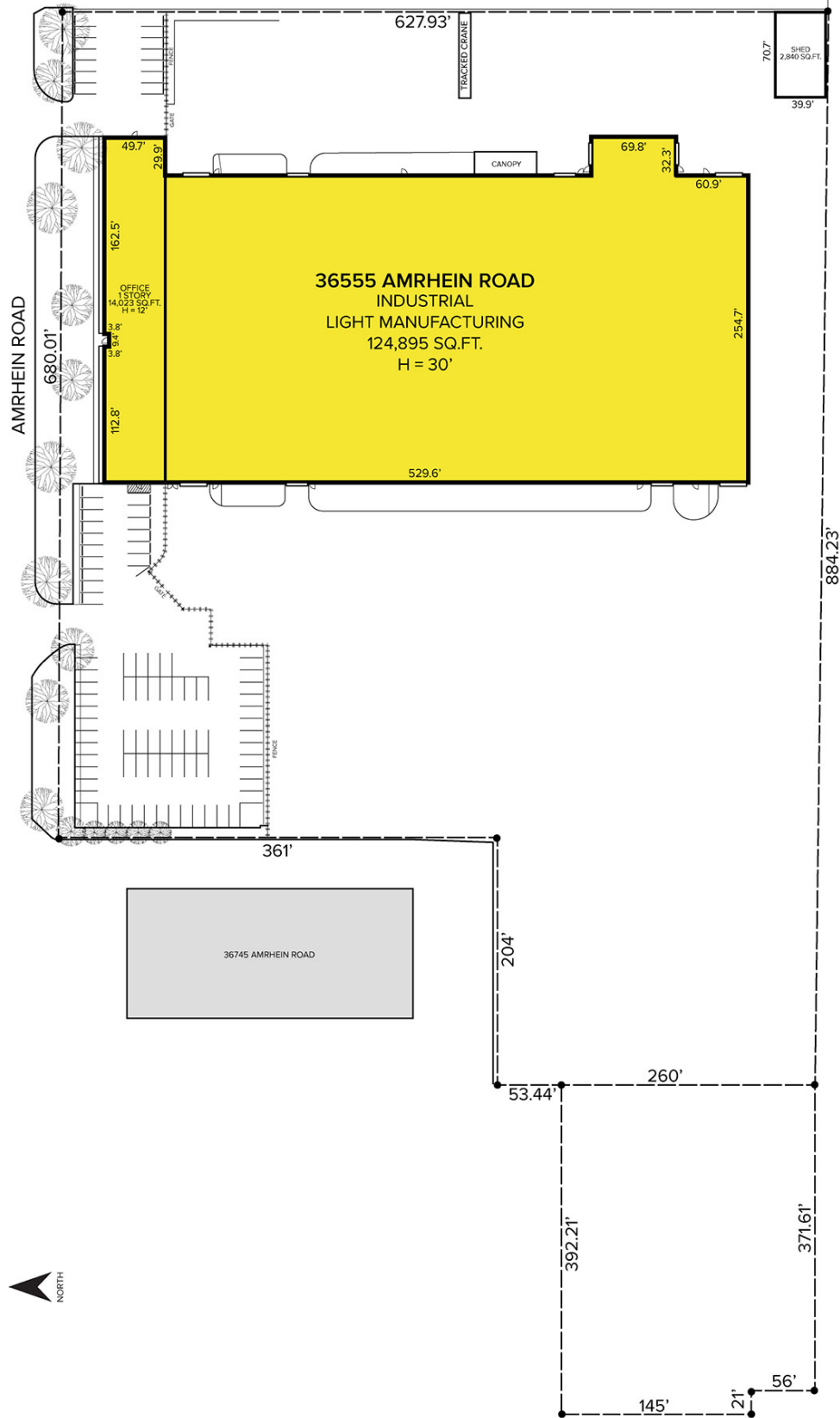
**SIGNATURE ASSOCIATES**  
One Towne Square, Suite 1200  
Southfield, MI 48076  
www.signatureassociates.com

# 36555 Amrhein Road – Livonia, Michigan

## Industrial For Sale

147,000  
Square Feet  
AVAILABLE

### Site Plan



For more information, please contact:

**STEVE GORDON**  
(248) 948 0101  
sgordon@signatureassociates.com

**JACK TOWNSEND**  
(248) 948 0115  
jtownsend@signatureassociates.com

**SIGNATURE ASSOCIATES**  
One Towne Square, Suite 1200  
Southfield, MI 48076  
www.signatureassociates.com

# 36555 Amrhein Road – Livonia, Michigan

Industrial For Sale

147,000  
Square Feet  
AVAILABLE

Aerial



For more information, please contact:

**STEVE GORDON**  
(248) 948 0101  
sgordon@signatureassociates.com

**JACK TOWNSEND**  
(248) 948 0115  
jtowndsend@signatureassociates.com

**SIGNATURE ASSOCIATES**  
One Towne Square, Suite 1200  
Southfield, MI 48076  
www.signatureassociates.com

Information is subject to verification and no liability for errors or omissions is assumed. Price is subject to change and listing withdrawal.