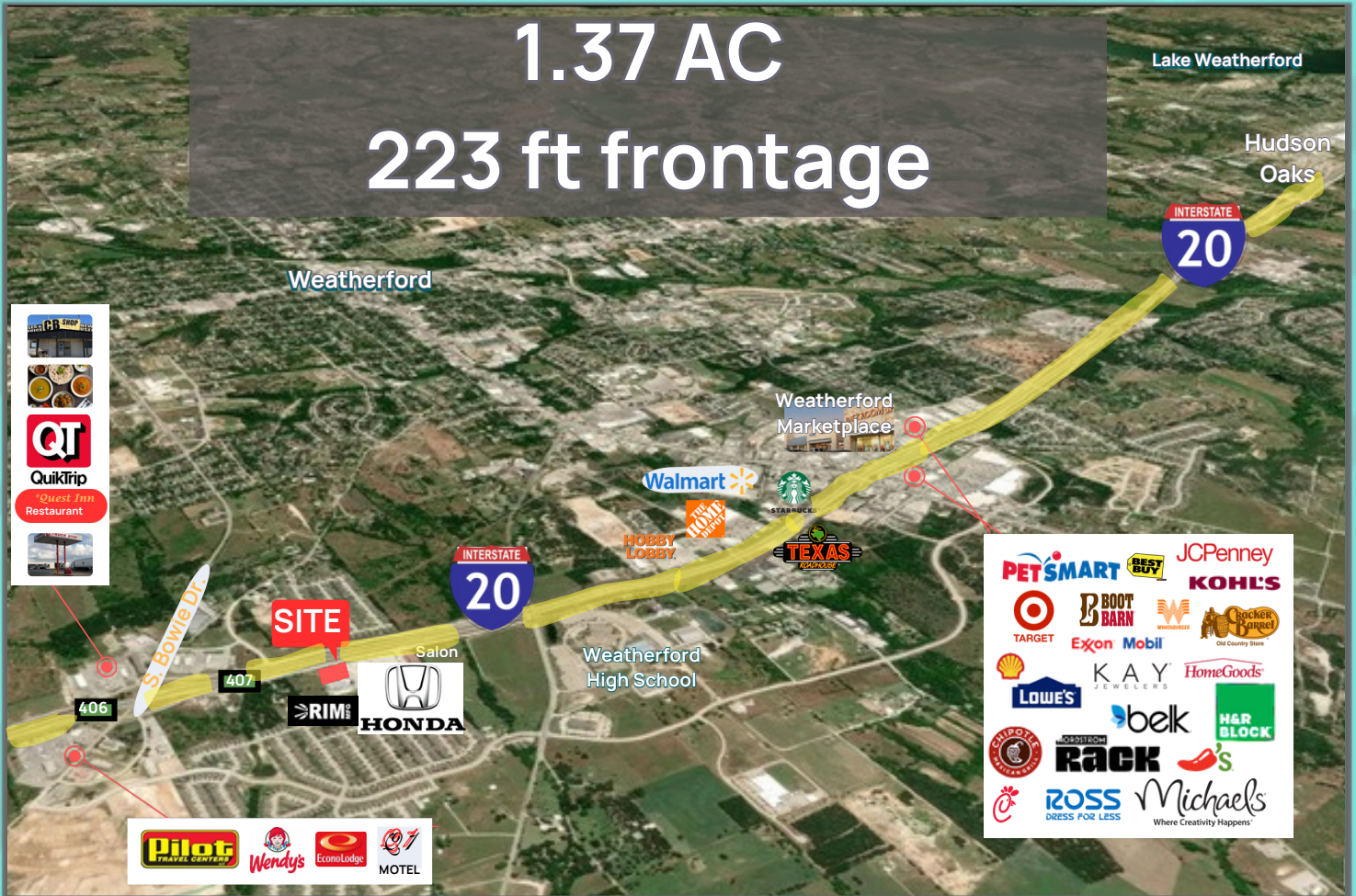




**LYNCH LEGACY**  
COMMERCIAL

# 901 W I-20

WEATHERFORD TX COMMERCIAL  
I-20 | HIGH VISIBILITY | MULTI-TENANT  
PAD SITE | FOR SALE OR BUILD TO SUIT



- PAD SITE - UP TO 8000 SF BUILDING
- 1.37 AC
- SINGLE OR MULTI-TENANT
- LOCATED IN WEATHERFORD
- TRAFFIC COUNT: 54,000 VPD

**STACY LYNCH**

817.908.9567  
stacy@lynchlegacyexp.com



**STEPHANIE RICH**

817.304.5939  
stephanie@lynchlegacyexp.com



**LYNCH LEGACY**  
COMMERCIAL

# 901 W I-20

WEATHERFORD TX COMMERCIAL  
I-20 | HIGH VISIBILITY | MULTI-TENANT  
PAD SITE | FOR SALE OR BUILD TO SUIT

## Excellent Visibility



- 223 FRONTAGE ON I-20
- ZONED C-2
- TRAFFIC COUNT: 54,000 VPD



**STACY LYNCH**

817.908.9567  
stacy@lynchlegacyexp.com



**STEPHANIE RICH**

817.304.5939  
stephanie@lynchlegacyexp.com



**LYNCH LEGACY**  
COMMERCIAL

# 901 W I-20

WEATHERFORD TX COMMERCIAL  
I-20 | HIGH VISIBILITY | MULTI-TENANT  
PAD SITE | FOR SALE OR BUILD TO SUIT

## Build Site on 1.37 AC



### PROXIMITIES

- ★ 2 MILES TO WEATHERFORD LANDING
- ★ 3 MILES TO WEATHERFORD TOWN CENTER
- ★ ADJACENT HONDA OF WEATHERFORD
- ★ EXIT 407 I-20 SERVICE ROAD



exp  
REALTY

**STACY LYNCH**

817.908.9567  
stacy@lynchlegacyexp.com



**STEPHANIE RICH**

817.304.5939  
stephanie@lynchlegacyexp.com



LYNCH LEGACY

COMMERCIAL

# THE LEGACY COMMERCIAL TEAM



*Stacy Lynch*  
Broker Associate  
Lynch Legacy Realty Group

Stacy is a professional broker with 39 years of experience leading our team. A resident of Parker County for 50+ years and proud Aledo High School graduate, she has a true passion for this area. Stacy is rooted in relationships, both professional and personal. Her knowledge of Parker County and the school districts in the area stems from her history with her family's 50+ year old Parker County Real Estate Company. Stacy's parents Roy and Jan Lynch started the company in 1972.

Stacy proudly serves as the Chairman of Board on the East Parker County Economic Development Committee and also the Branch to Hope Community Center.



*Stephanie Rich*  
REALTOR®  
Lynch Legacy Realty Group

Stephanie is an adventurous, fun-loving soul. Her dedication and commitment, paired with her down to earth personality, make her perfect for our team here at Lynch Legacy. She hails from the "Sooner State" up north of here, but she found her place right here in Parker County as quick as she could.

In her spare time she is obviously a big Oklahoma Sooners fan and loves catching a game when the opportunity presents itself. Her hobbies include shopping, cooking, and spending as much time by the lake as the weather allows. Her favorite thing about Parker County? "The people here- their pride in community, family and country" .

EXPERTISE IN EVERY BRANCH

*We Live Here, Work Here, Play Here.*



STACY LYNCH

817.908.9567

stacy@lynchlegacyexp.com



STEPHANIE RICH

817.304.5939

stephanie@lynchlegacyexp.com