



BROKER BONUS

**\$2/SF**

for any deal completed  
by July 4th

# SUBLEASE AVAILABLE

8501 N SCOTTSDALE RD, SUITE 280 | ±6,950 SF

**CBRE**

# SUITE DETAILS



## ADDRESS:

8501 N Scottsdale Rd

## SUITE 280

## SIZE:

±6,950 SF

## EXPIRATION DATE:

August 31, 2027

## ASKING RATE:

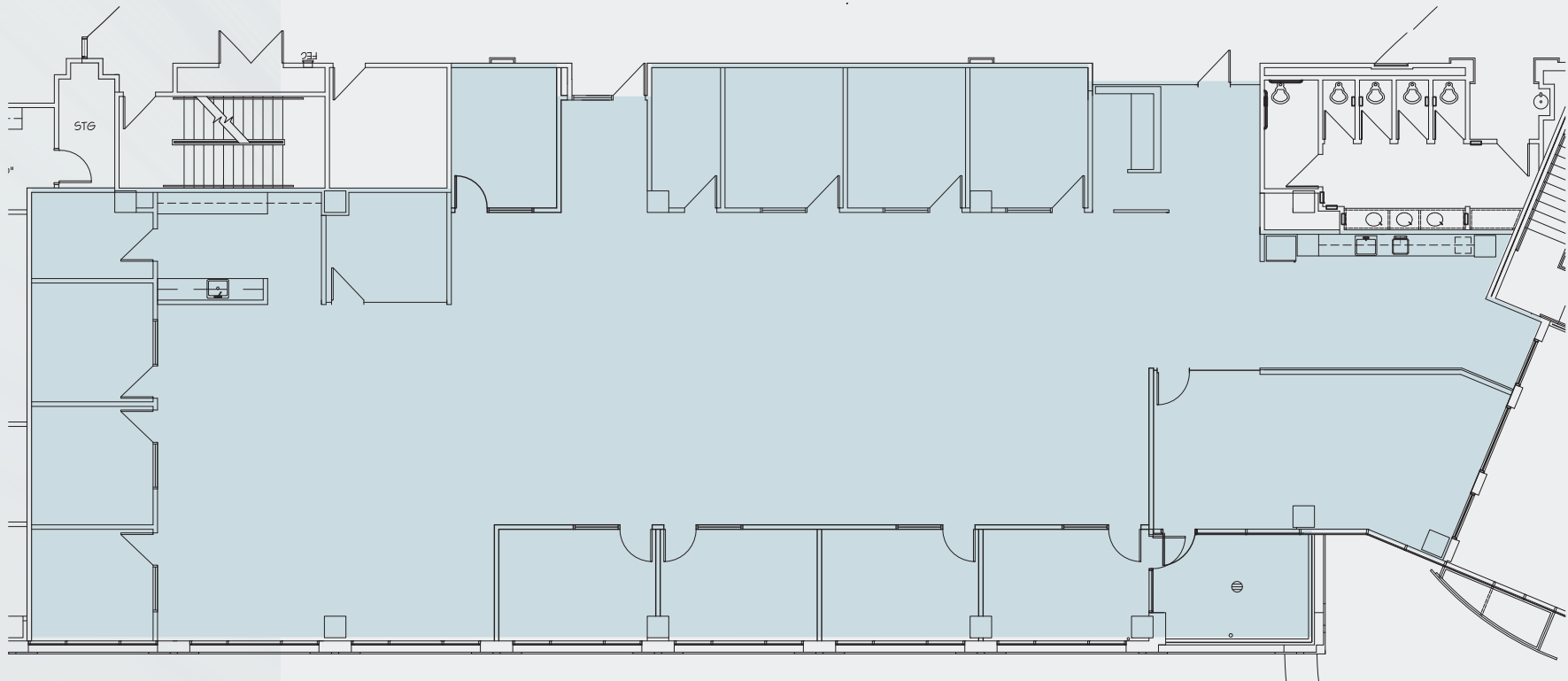
\$35.00 per SF

## PARKING:

- 4.0/1000 SF ratio
- 3 Reserved, Covered at \$75/month/stall
- 25 Unreserved, Covered at \$50/month/stall

## PLUG & PLAY FURNITURE INCLUDED

- 14 Workstations
- 11 Offices
- 1 Huddle Room
- 1 12-person Board Room
- Large Breakroom
- Copy Room with Additional Sink
- Private Balcony





# SUITE PHOTOS





**3 PRIVATE CONFERENCE ROOMS**



**LARGE KITCHEN SPACE WITH CAFÉ SEATING**



**STATE OF THE ART COFFEE MACHINE**



**EXECUTIVE MEETING SUITE**



**LEED GOLD & ENERGY STAR CERTIFICATION**

# AMENITIES



## LEASING CONTACTS

**LAUREN LOVELL**  
 +1 949 463 9840  
 lauren.lovell@cbre.com

**JACK MURPHY**  
 +1 520 359 5644  
 jack.murphy5@cbre.com

© 2026 CBRE, Inc. All rights reserved. This information has been obtained from sources believed reliable, but has not been verified for accuracy or completeness. You should conduct a careful, independent investigation of the property and verify all information. Any reliance on this information is solely at your own risk. CBRE and the CBRE logo are service marks of CBRE, Inc. All other marks displayed on this document are the property of their respective owners, and the use of such logos does not imply any affiliation with or endorsement of CBRE. Photos herein are the property of their respective owners. Use of these images without the express written consent of the owner is prohibited.

