

Land ★ SALE

1860 SANTA FE DR WEATHERFORD, TX

2.98 ACRES

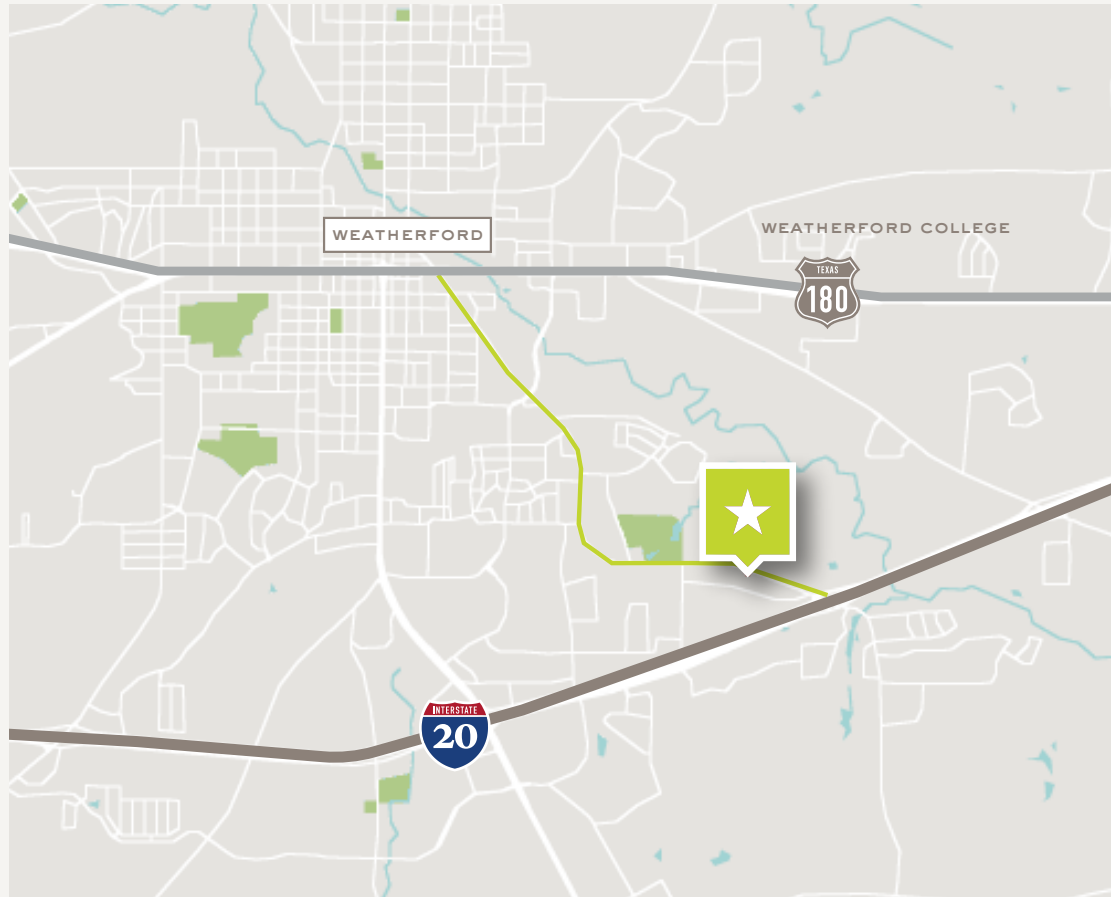


Land ★ SALE

1860 SANTA FE DR WEATHERFORD, TX

2.98 ACRES

LanCarte.com



PROPERTY FEATURES

- 2.98 AC Available
- Zoning: AG/Commerical
- Parker County
- Utilities to the Site
- 378 FT of frontatge on Santa Fe
- Over 10K VPD
- Owner may be open to splitting parcel

LOCATION OVERVIEW

1860 Santa Fe Drive offers a compelling opportunity to secure a well-positioned 2.98-acre tract with strong frontage in one of Weatherford's steadily expanding growth corridors. The site benefits from excellent visibility and accessibility, making it highly adaptable for a variety of future commercial or mixed-use concepts as the surrounding area continues to mature.

Weatherford's ongoing population growth, expanding rooftops, and increasing demand for neighborhood-serving uses position this property well for long-term appreciation and strategic development. With its size, frontage, and location, the land provides flexibility for users or investors seeking to capitalize on the area's evolution over the coming years. This is a rare chance to control a meaningful footprint in a market where well-located land is becoming increasingly scarce.

SALE PRICE

CONTACT BROKER

Land ★ SALE

1860 SANTA FE DR WEATHERFORD, TX

2.98 ACRES

LanCarte.com

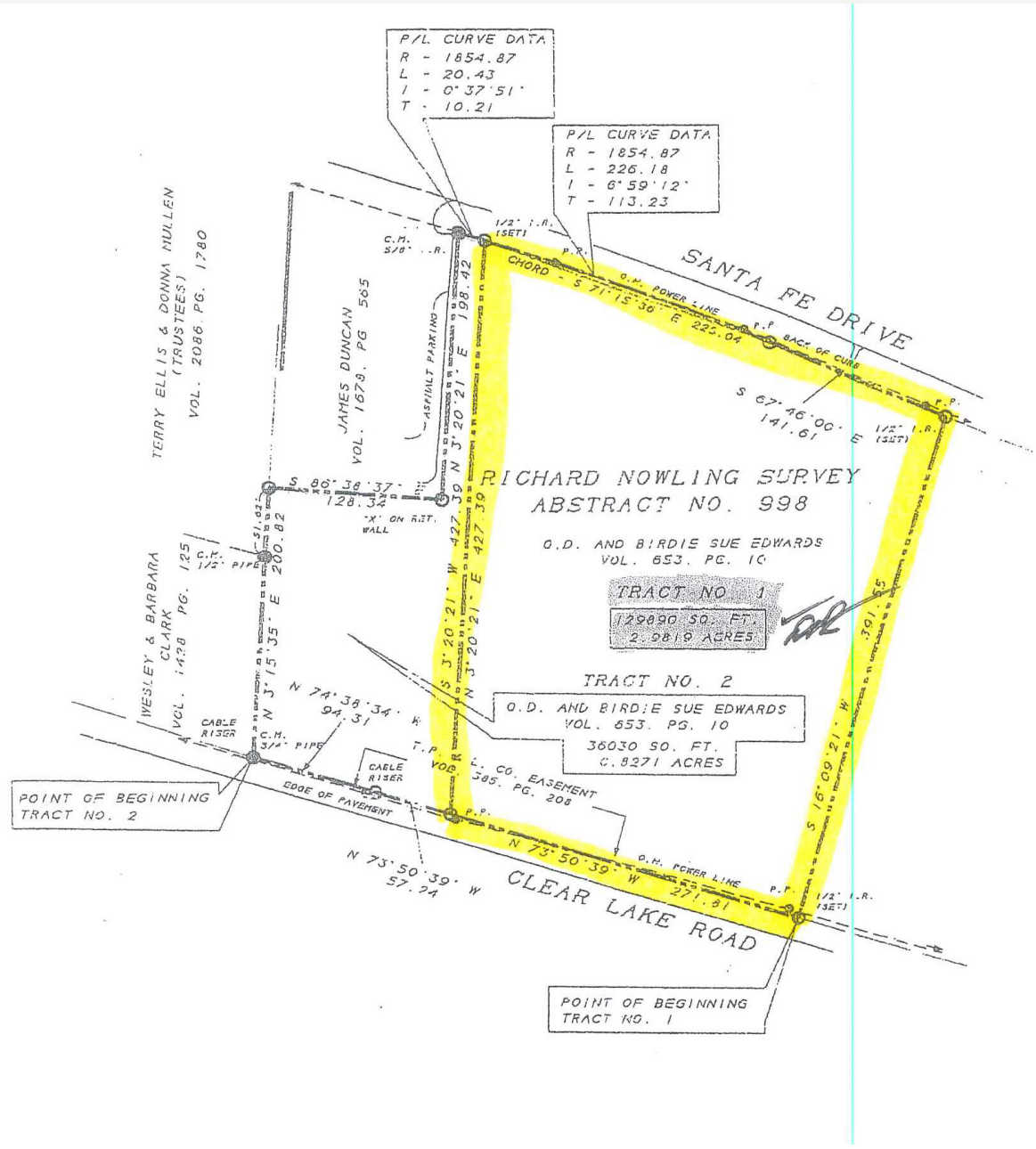


Land ★ SALE

1860 SANTA FE DR WEATHERFORD, TX

2.98 ACRES

LanCarte.com





LANCARTE
COMMERCIAL
BROKERAGE ★ PROPERTY MANAGEMENT

Relentlessly Pursuing What Matters

Ben Gehrke
612-306-5401
bgehrke@lancarte.com

The information provided herein was obtained from sources believed to be reliable. However, LanCarte Commercial makes no warranties, warranties or representations as to the completeness or accuracy thereof. The presentation of this property is submitted subject to errors, omissions, change of price or conditions, prior to sale or lease, or withdrawal without notice. Copyright 2026 LanCarte Commercial Real Estate, LLC.