



# Golf Medical Plaza



## MEDICAL OFFICE SUITES FOR LEASE

1400 E GOLF ROAD, DES PLAINES, IL 60016



## SUITE AVAILABILITIES

SUITE	SIZE	CONTIGUOUS
109	2,748 SF	---
114	1,943 SF	---
121	1,181 SF	---
126	1,508 SF	---
207	965 SF	---
217	979 SF	2,181 SF
219	1,202 SF	2,181 SF
222	849 SF	---

## BUILDING FEATURES



Free unreserved parking, plus reserved lot for doctors



On-campus hospital



**Utilities:** Modified gross, including janitorial, tenant responsible for electricity



**Rental Rate:**  
Contact brokers



On-site childcare available



# PROJECT AERIAL



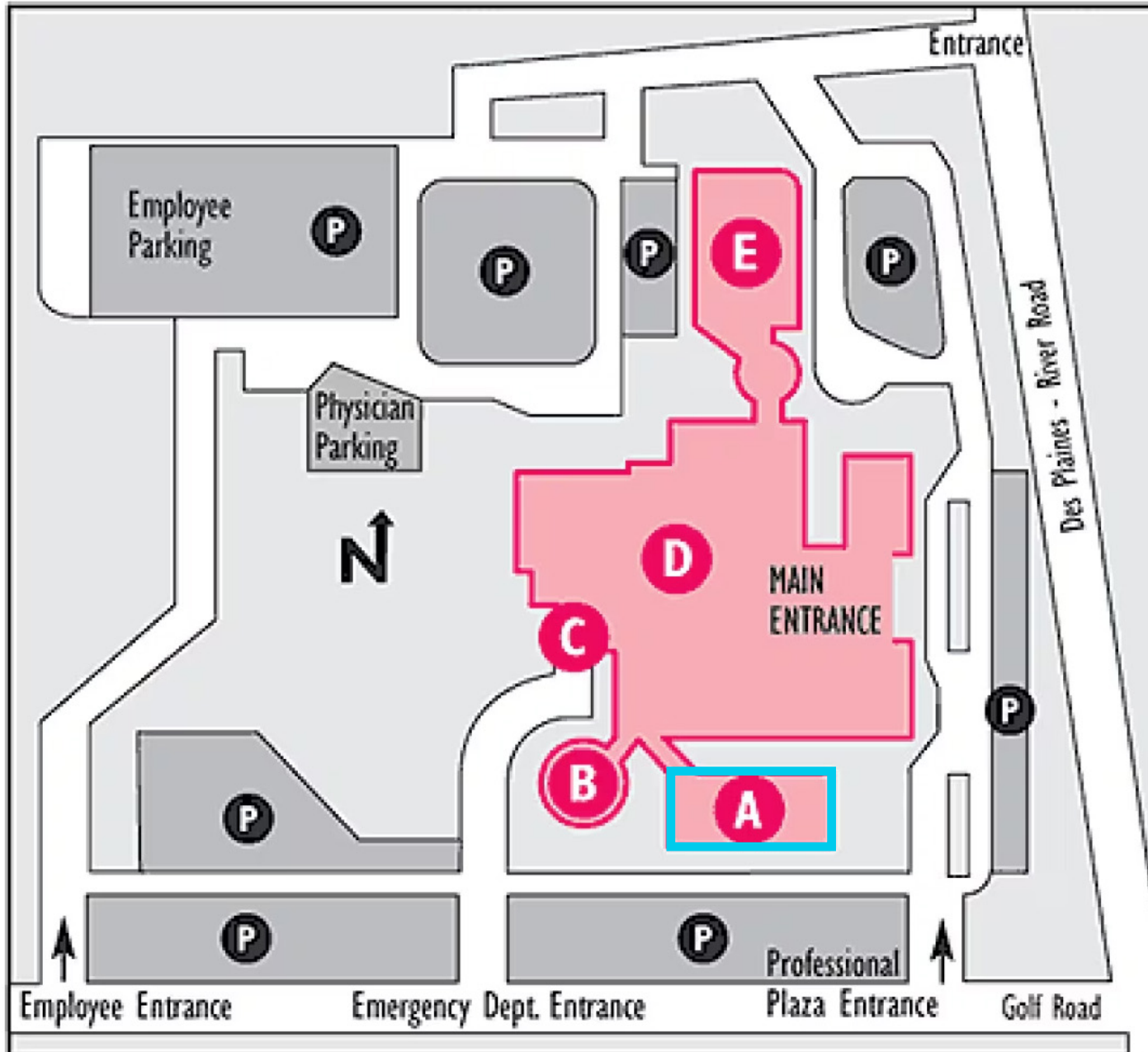
 Holy Family  
Medical Center

 Golf Medical Plaza

# SITE PLAN



## Holy Family Medical Center



- A** Golf Medical Plaza  
(1400 Golf Road)
- B** Mother Frances Pavilion
- C** Immediate Care Center
- D** Holy Family Medical  
Center
- E** River Medical Plaza  
(150 N. River Road)
- F** Parking

# LOCAL DEMOGRAPHICS



**314,332**

POPULATION



**\$9,034**

ANNUAL AVERAGE HEALTHCARE  
SPENDING PER HOUSEHOLD



**19.9%**

POPULATION AGED 65+



**43**

MEDIAN AGE

## TRAFFIC COUNTS



**27,425**

CARS PER DAY

E Golf Road & Mary St W

**WITHIN A  
5-MILE RADIUS OF  
THE PROPERTY**



**\$141,539**

AVERAGE  
HOUSEHOLD INCOME

## INSURANCE COVERAGE

**47%**

PPO

**16%**

HMO

**22%**

MEDICARE

**15%**

OTHER

## ABOUT BUILDING OWNERSHIP



Founded in 2001, Prime Healthcare has emerged as one of the nation's largest award-winning health systems. Prime Healthcare was founded by Dr. Prem Reddy, a physician with a mission to transform hospitals, improve community healthcare, and provide patients with the best care.

Their philosophy is that all healthcare is local. Their 51 hospitals and more than 360 outpatient locations nationwide, including urgent care centers, ambulatory surgery centers, and specialty clinics, serve the unique needs of their communities while providing exceptional care with the strength and support of Prime Healthcare.

Through a physician-founded and patient-centered model, dedication to quality, evidence-based best practices, operational efficiency, and capital investment, Prime Healthcare is recognized among the best in the nation by Truven Health Analytics as a 10 Top and 15 Top Health System in the nation three times and was the only health system recognized with the prestigious 2021 John M. Eisenberg Patient Safety and Quality Award for addressing social determinants of health. Prime Healthcare ranks among the top 10 health systems in the nation for social responsibility and cost efficiency, according to the Lown Institute

Prime Healthcare and the not-for-profit Prime Healthcare Foundation serve more than 600 communities across 14 states with more than 57,000 staff and affiliated physicians in Alabama, California, Georgia, Illinois, Indiana, Kansas, Michigan, Missouri, Nevada, New Jersey, Ohio, Pennsylvania, Rhode Island, and Texas.

**51**  
HOSPITALS

**14**  
STATES

**600+**  
COMMUNITIES SERVED

**57,000+**  
STAFF & AFFILIATED  
PHYSICIANS

**10,582**  
LICENSED BEDS



# Holy Family Medical Center

Holy Family Medical Center is a 178-bed and only long-term acute care hospital (LTACH) in Northwest Chicagoland, dedicated to caring for patients with complex medical conditions. They are proud to be the first LTACH in Illinois accredited by The Joint Commission for Disease-Specific Care in Respiratory Failure. Their experienced care team specializes in treating critically ill patients who require extended hospitalization, often transferred from critical care units of other hospitals.



## ON-SITE AMENITIES:

- 12-hour visiting hours per day
- Various parking lots
- On-site cafe (Dove's Nest Cafe)
- Vending machines
- Gift shops
- Two chapels

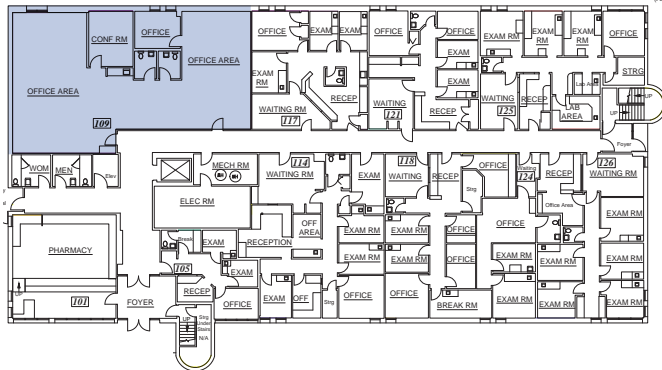
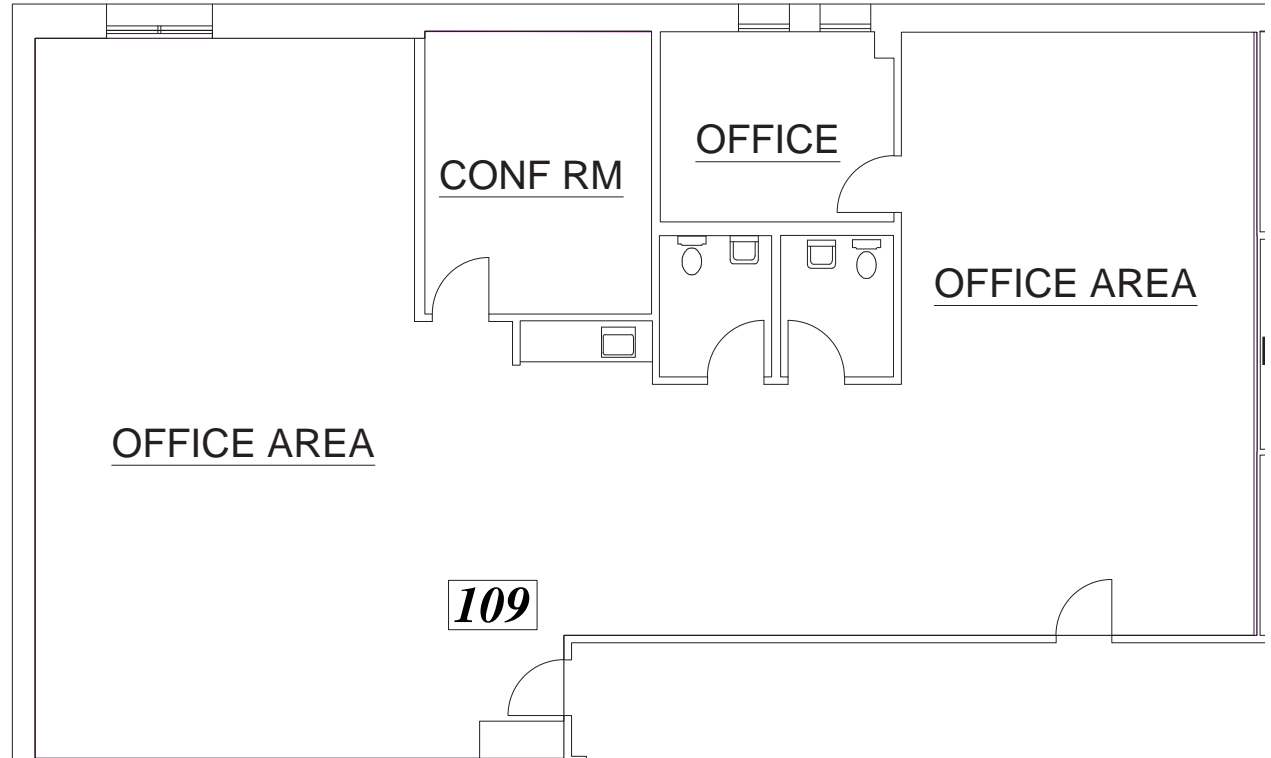


# FLOOR PLAN

## FIRST FLOOR

# FLOOR

SUITE	SIZE
109	2,748 SF



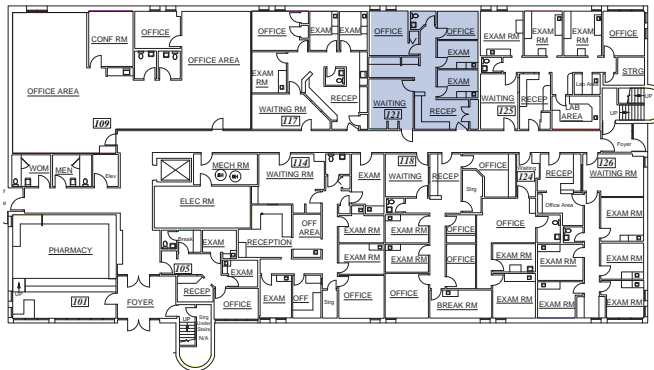
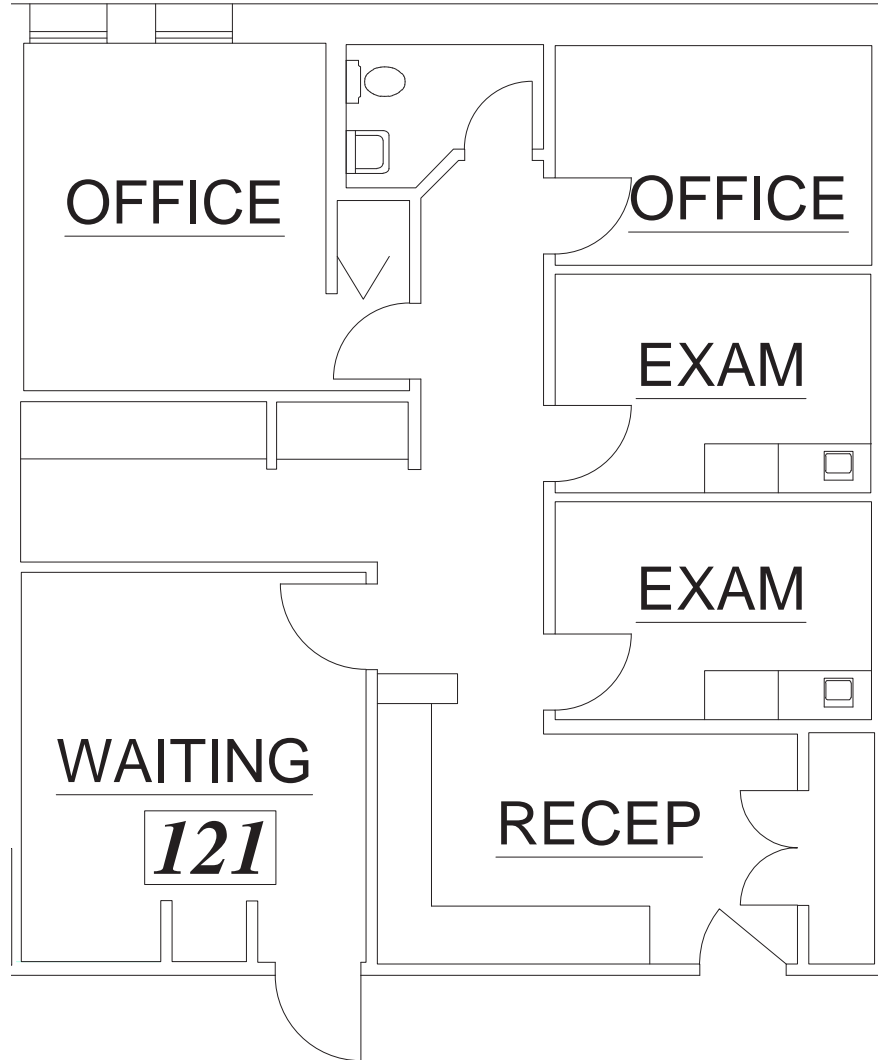


# FLOOR PLAN

## FIRST FLOOR

# FLOOR

SUITE	SIZE
121	1,181 SF

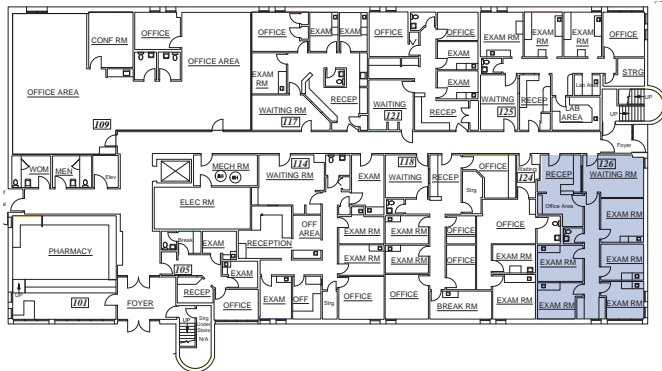
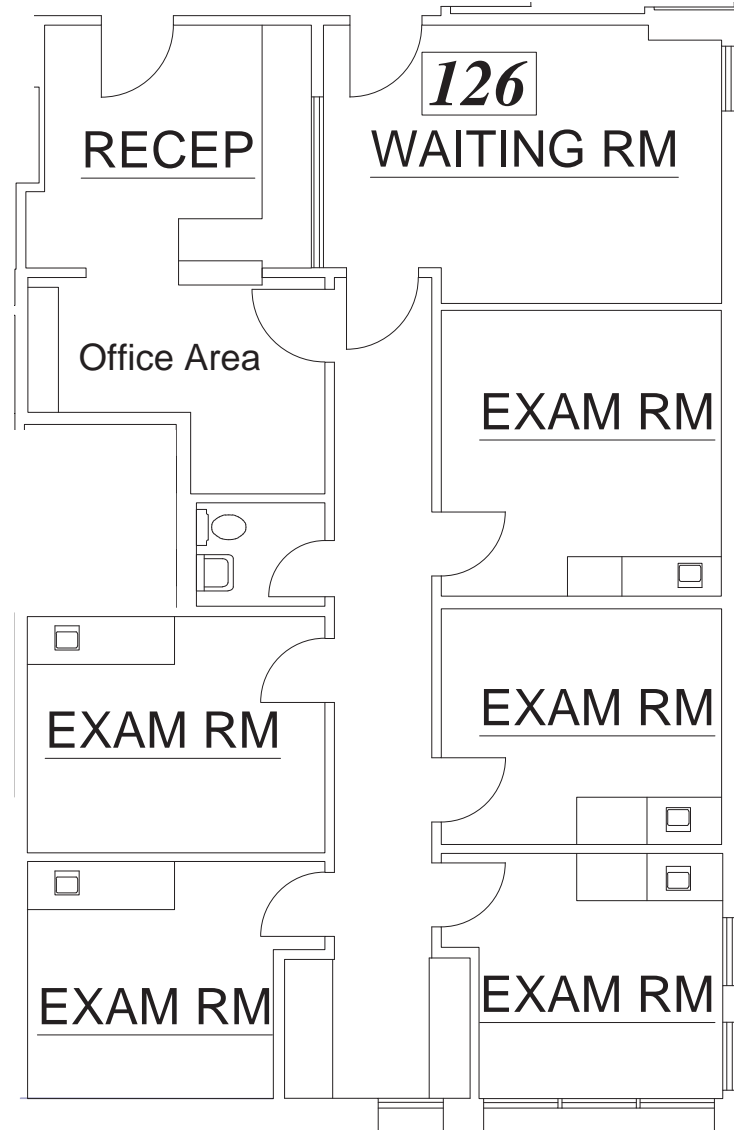


# FLOOR PLAN

## FIRST FLOOR

# FLOOR

SUITE	SIZE
126	1,508 SF

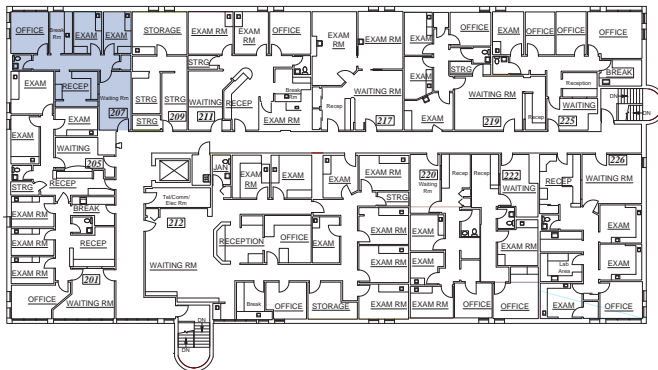
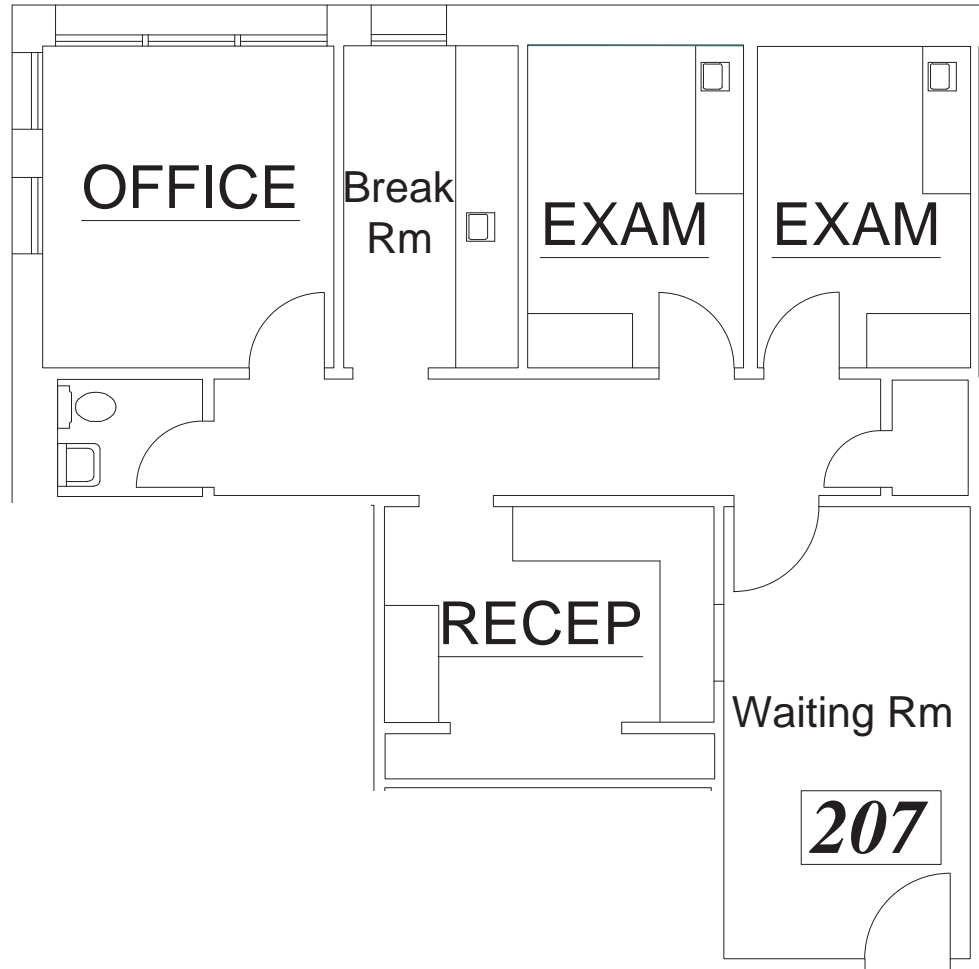


# FLOOR PLAN

## SECOND FLOOR

# FLOOR

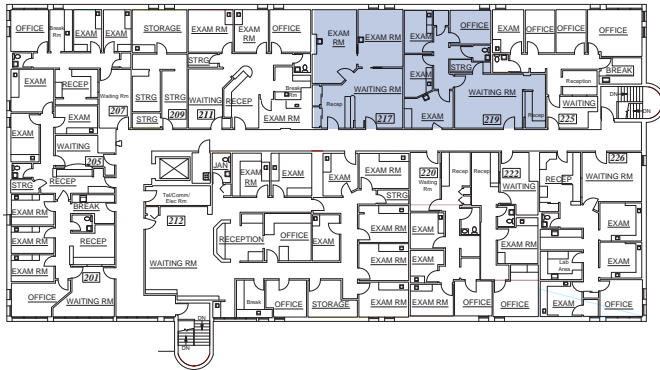
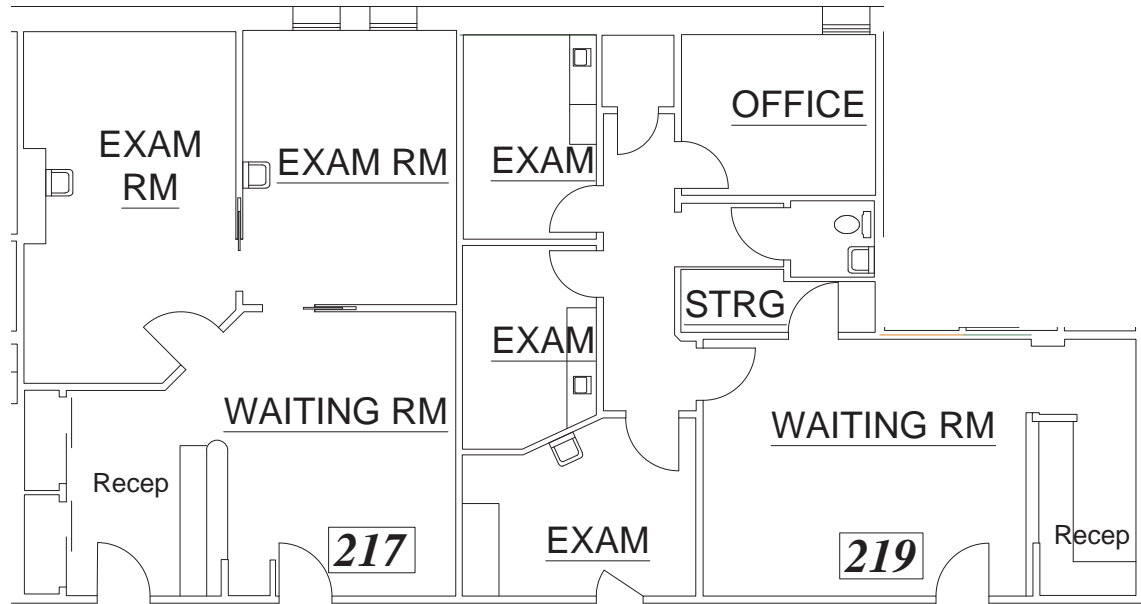
SUITE	SIZE
207	965 SF



# FLOOR PLAN

## SECOND FLOOR

SUITE	SIZE	CONTIGUOUS
217	979 SF	2,181 SF
219	1,202 SF	2,181 SF

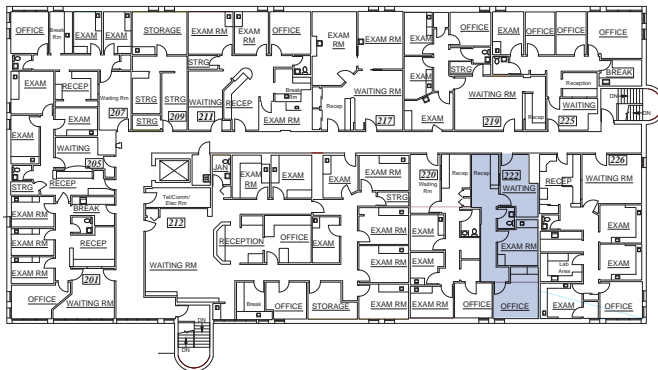
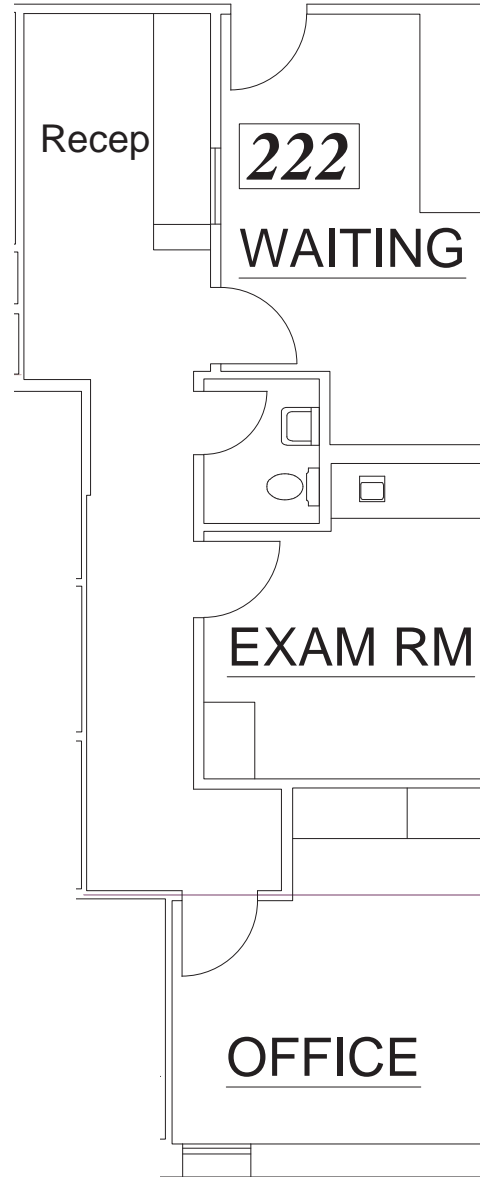


# FLOOR PLAN

## SECOND FLOOR

# FLOOR

SUITE	SIZE
222	849 SF





# Golf Medical Plaza

---

**1400 E GOLF ROAD, DES PLAINES, IL 60016**

**NEHAL WADHWA**

+1 858 625 5228

nehal.wadhwa@cushwake.com

**MATTHEW MELENDRES**

+1 619 732 6026

matthew.melendres@cushwake.com

**CECE CONWAY**

+1 312 881 7041

cece.conway@transwestern.com

**ELISE O'CONNOR GOODMAN**

+1 312 558 3876

elise.oconnor@transwestern.com



©2026 Cushman & Wakefield. All rights reserved. The information contained in this communication is strictly confidential. This information has been obtained from sources believed to be reliable but has not been verified. NO WARRANTY OR REPRESENTATION, EXPRESS OR IMPLIED, IS MADE AS TO THE CONDITION OF THE PROPERTY (OR PROPERTIES) REFERENCED HEREIN OR AS TO THE ACCURACY OR COMPLETENESS OF THE INFORMATION CONTAINED HEREIN, AND SAME IS SUBMITTED SUBJECT TO ERRORS, OMISSIONS, CHANGE OF PRICE, RENTAL OR OTHER CONDITIONS, WITHDRAWAL WITHOUT NOTICE, AND TO ANY SPECIAL LISTING CONDITIONS IMPOSED BY THE PROPERTY OWNER(S). ANY PROJECTIONS, OPINIONS OR ESTIMATES ARE SUBJECT TO UNCERTAINTY AND DO NOT SIGNIFY CURRENT OR FUTURE PROPERTY PERFORMANCE.