



**AVAILABLE FOR LEASE  
AT FREMONT PROFESSIONAL PARK**

**±1,607 SF OFFICE, MEDICAL/DENTAL SPACE**

3845 BEACON AVE, SUITE D/E, FREMONT, CA 94538

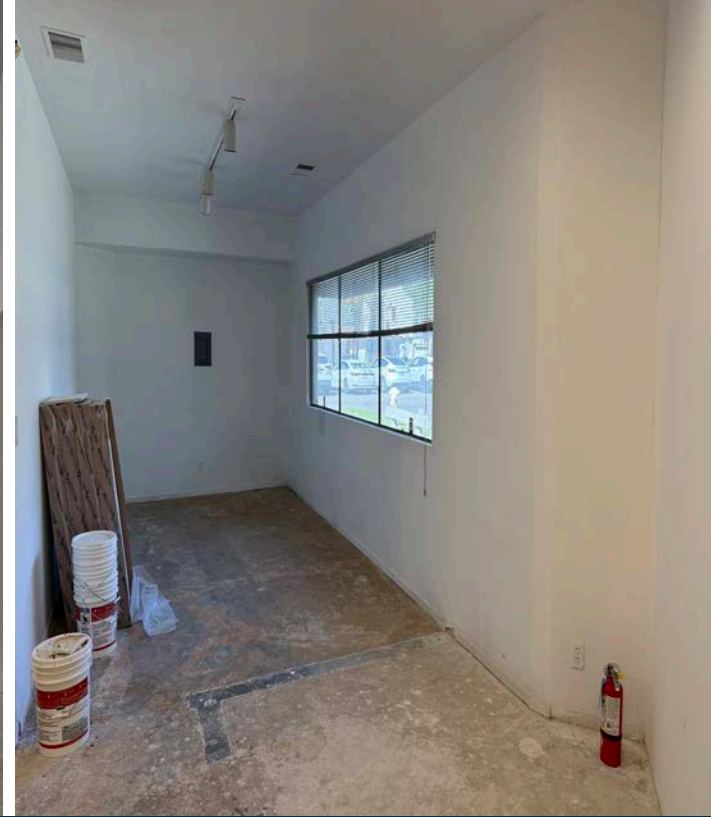
LOCAL EXPERTISE. INTERNATIONAL REACH. WORLD CLASS.

**Mark Rinkle**

Principal  
mrinkle@lee-associates.com  
925-737-4145  
LIC NO 01512632

**Kirsten Johnsen**

Associate  
kjohnsen@lee-associates.com  
925-519-7818  
LIC NO 02133540



## PROPERTY HIGHLIGHTS



Single-story office and medical/dental building located within Fremont Professional Park.



Suite D/E: ±1,607 SF office, medical/dental space



Available immediately!



Convenient on-site surface parking available.



Situated in the heart of downtown Fremont, with convenient access to Washington Hospital, Palo Alto Medical Foundation and Kaiser facilities.



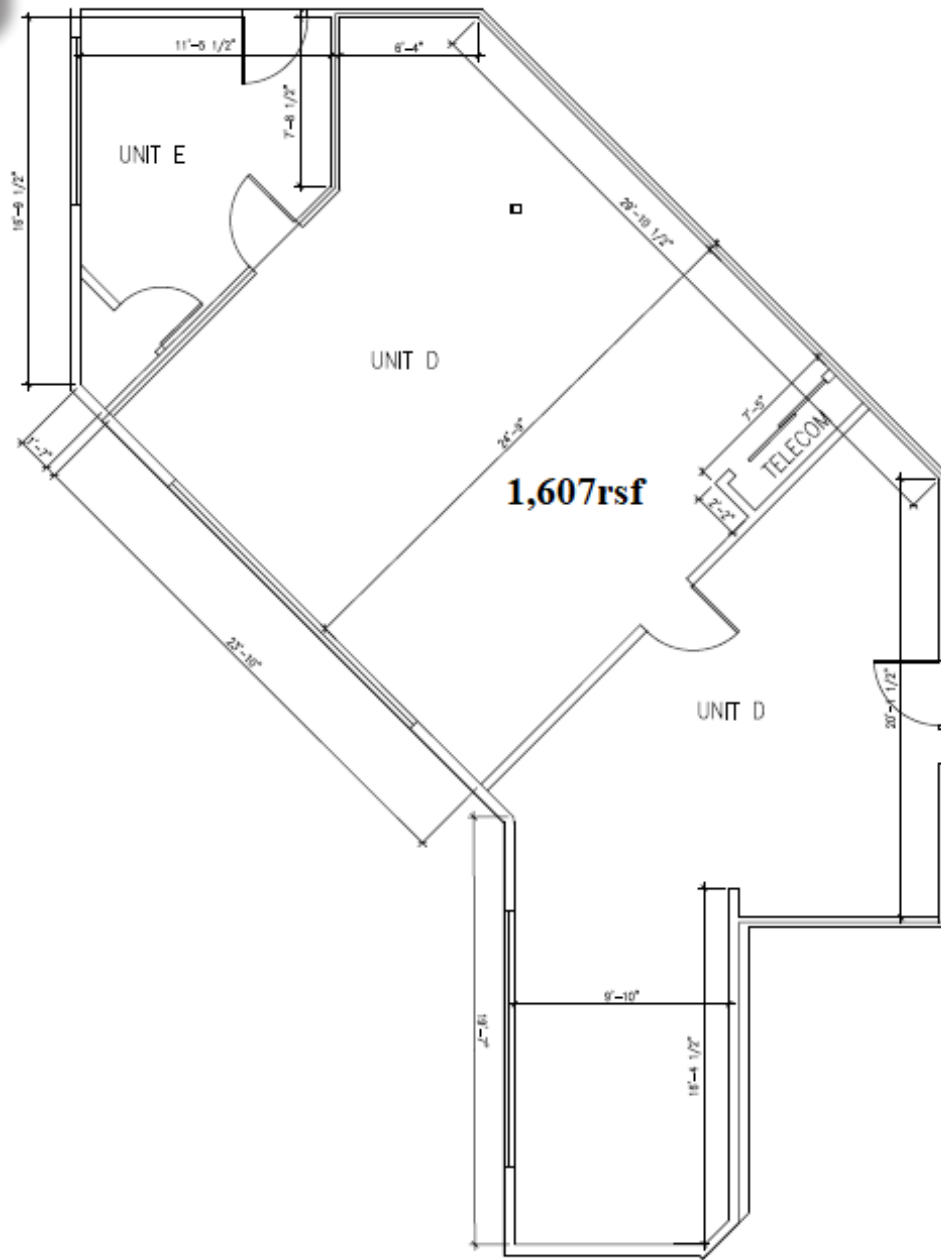
Walking distance to BART, the Fremont Hub retail center, and nearby neighborhoods.



Lease rate: Contact brokers

# 3845 BEACON AVENUE

Suite D/E: ±1,607 SF

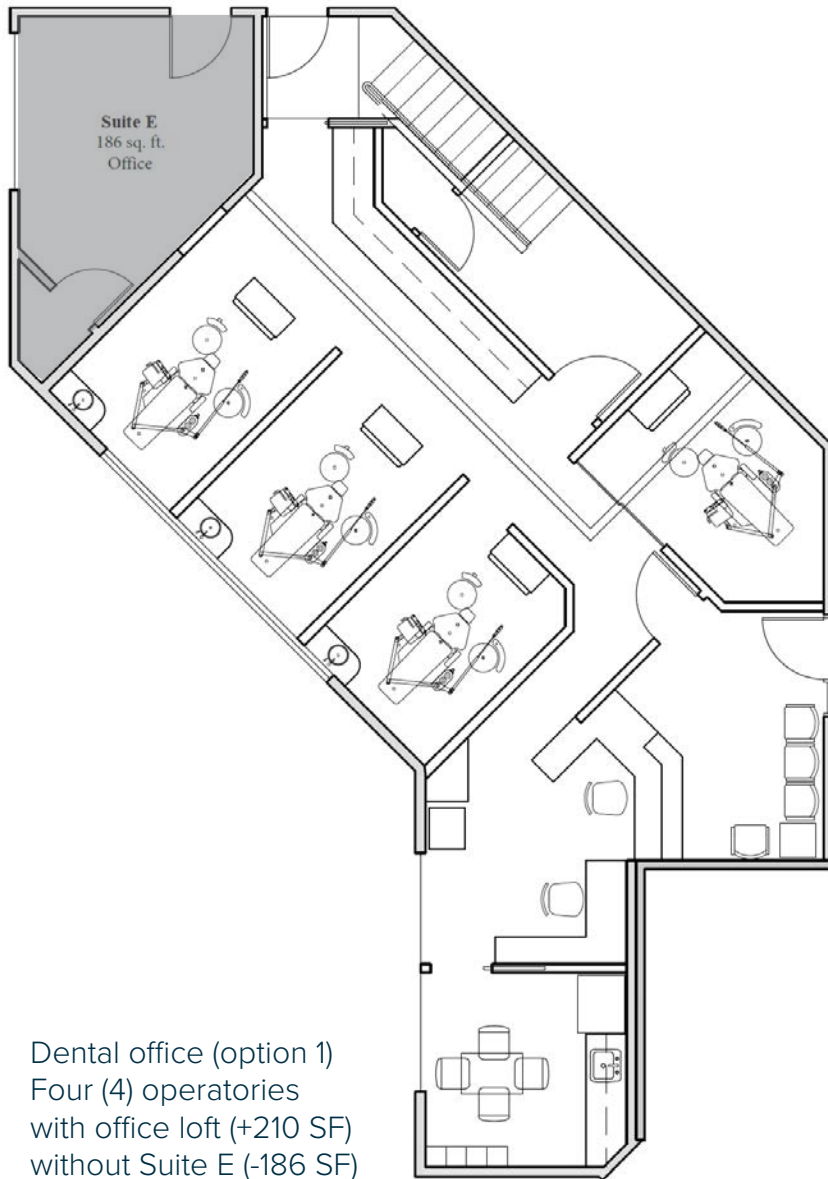


\*FLOOR PLAN NOT TO SCALE

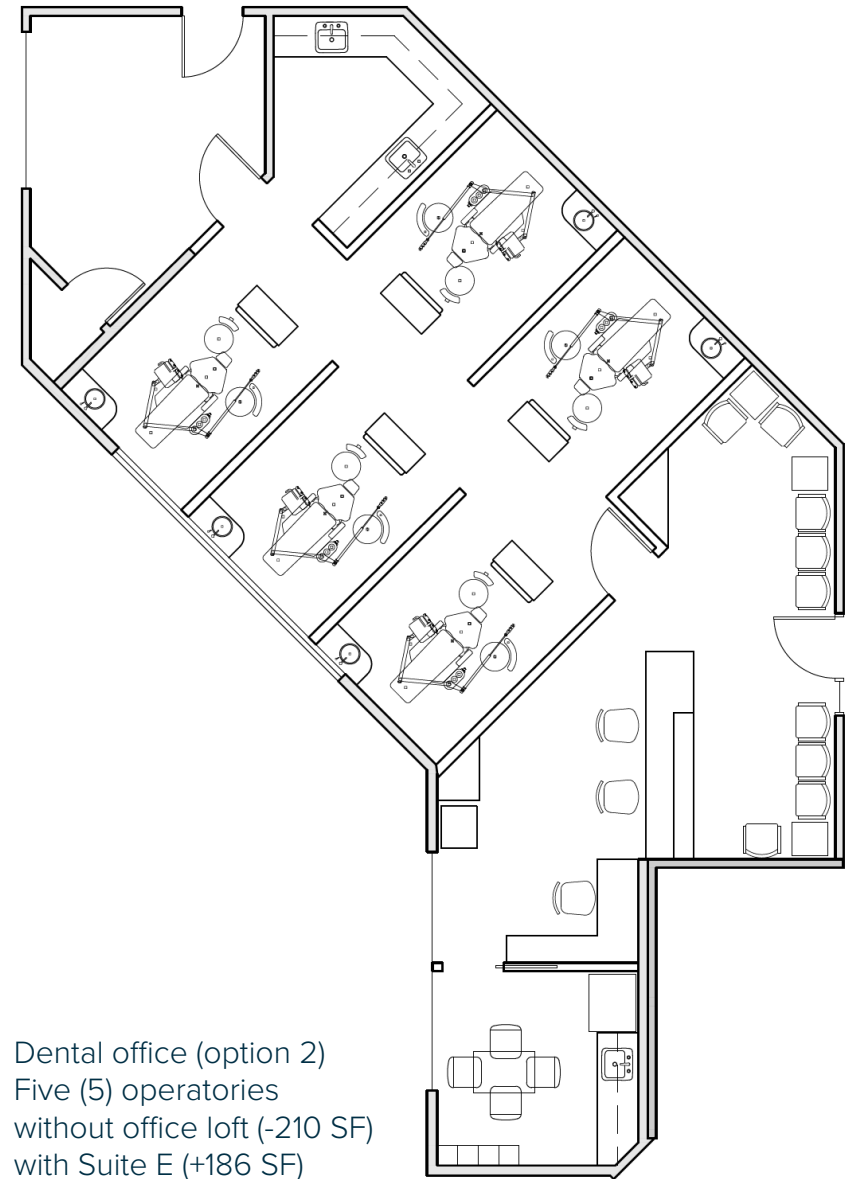
FLOOR PLAN - AS BUILT

3845  
BEACON AVENUE

# FLOOR PLAN - CONCEPTUAL



- Dental office (option 1)
- Four (4) operatories
- with office loft (+210 SF)
- without Suite E (-186 SF)



- Dental office (option 2)
- Five (5) operatories
- without office loft (-210 SF)
- with Suite E (+186 SF)

\*FLOOR PLAN NOT TO SCALE

3845  
BEACON AVENUE

**FOR LEASE**

**±1,607 SF OFFICE, MEDICAL/DENTAL SPACE AVAILABLE**

**3845 BEACON AVE., SUITE D/E | FREMONT, CA 94538**



**Mark Rinkle**

Principal  
mrinkle@lee-associates.com  
925-737-4145  
LIC NO 01512632



**Kirsten Johnsen**

Associate  
kjohnsen@lee-associates.com  
925-519-7818  
LIC NO 02133540

All information furnished regarding property for sale, rental or financing is from sources deemed reliable, but no warranty or representation is made to the accuracy thereof and same is submitted to errors, omissions, change of price, rental or other conditions prior to sale, lease or financing or withdrawal without notice. No liability of any kind is to be imposed on the broker herein.

Lee & Associates® East Bay, Inc. Corp. ID 01194869 5000 Pleasanton Ave, Suite 220, Pleasanton, CA 94566

LEE-ASSOCIATES.COM

**3845**  
**BEACON AVENUE**