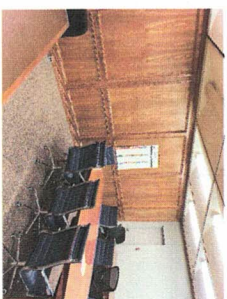


5004 East Archer
Tulsa, OK

CALL DAVE HALL
918-665-2700



The information contained herein was obtained from sources deemed reliable, but is not guaranteed. All interested parties are encouraged to thoroughly investigate the Property.

MIDTOWN INDUSTRIAL/ COMMERCIAL PROPERTY SALE OR LEASE

4 Buildings total 19,000 SF
Land Area- 108, 221 SF

5004 E Archer

Total 16,300 SF on 26,998 SF Lot
2 Story Office Building 6,492 SF
Tilt wall Warehouse 7,384 SF
Storage Building 2,424 SF
All 240V single phase electric
#5 12' x 10' OH Doors #1 15' x 7.5' Slider
Graveled and fenced yard with cameras and security system
IL Industrial Zoning

5002 East Archer

47,376 SF yard, fenced and graveled Zoned IL-Industrial

4940 East Archer

2,706 SF building on 33,847 SF lot, fenced and graveled
225 SF office, one restroom 240V single phase electric
#2 12' x 14' OH Doors #1 15' x 12' Slider
CH Commercial Zoning