

8041 S 228th Street - Suite 107

Kent, WA

Key Facts

Property type Industrial space

Building size 40,300 SF

Space available 14,029 SF



Contact Us

Learn more about this property or schedule a tour by reaching out to our local investment and leasing officer.

Chad Rawlings

+1 (206) 310-4229

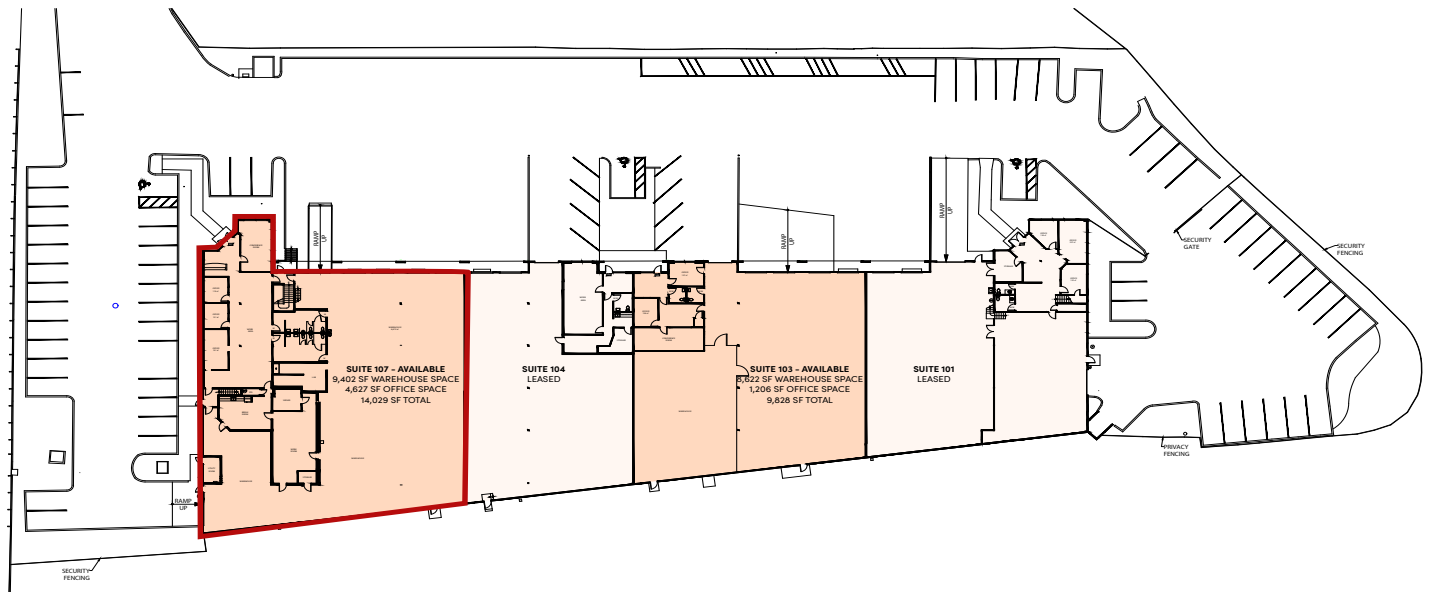
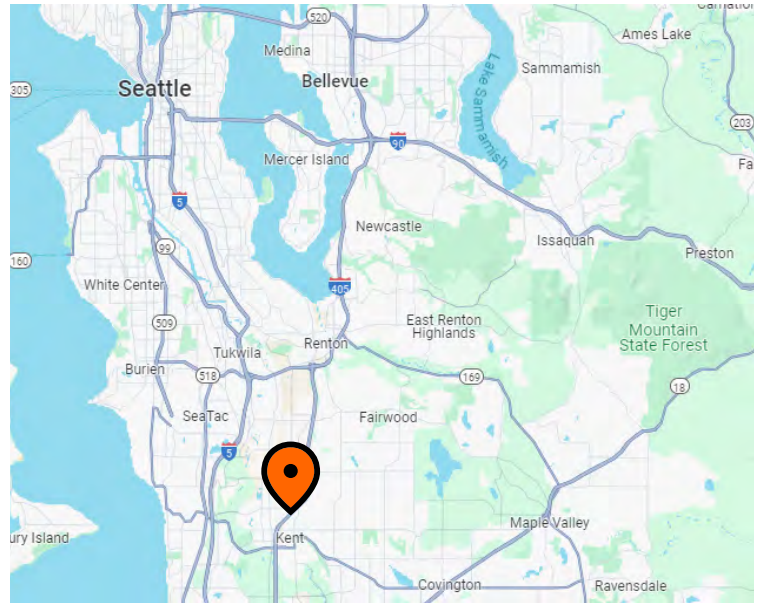
chad.rawlings@eqtpartners.com

8041 S 228th Street - Suite 107

Kent, WA

SPACE SPECIFICATIONS

Suite 107 Available
Warehouse Space: 9,402 SF
Office Space: 4,627 SF <ul style="list-style-type: none">• Additional 3,214 SF of Mezzanine Office Available
Total Space: 14,029 SF
Loading: 1 GL / 4 DH (2 Edge of Dock Levelers)
Lighting: LED
Power: 600 Amps, 277/480 Volt
Clear Height: 24'



Contact Us

Learn more about this property or schedule a tour by reaching out to our local investment and leasing officer.

Chad Rawlings

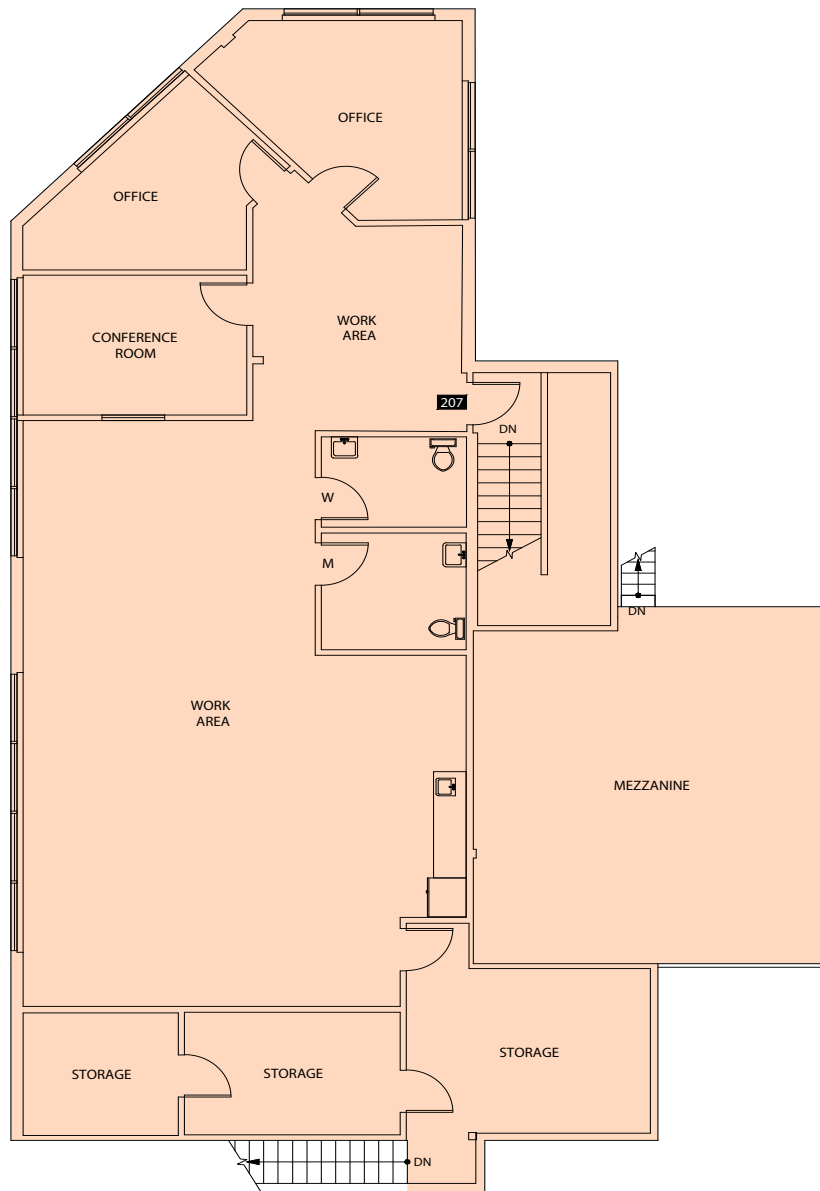
+1 (206) 310-4229

chad.rawlings@eqtpartners.com

8041 S 228th Street - Suite 107

Kent, WA

MEZZANINE SPACE AVAILABLE IN ADDITION TO TOTAL SF - 3,214 SF



Contact Us

Learn more about this property or schedule a tour by reaching out to our local investment and leasing officer.

Chad Rawlings

+1 (206) 310-4229

chad.rawlings@eqtpartners.com

8041 S 228th Street - Suite 107

Kent, WA

LOCATION



Contact Us

Learn more about this property or schedule a tour by reaching out to our local investment and leasing officer.

Chad Rawlings

+1 (206) 310-4229

chad.rawlings@eqtpartners.com