

# 128 FURLONG INDUSTRIAL DR

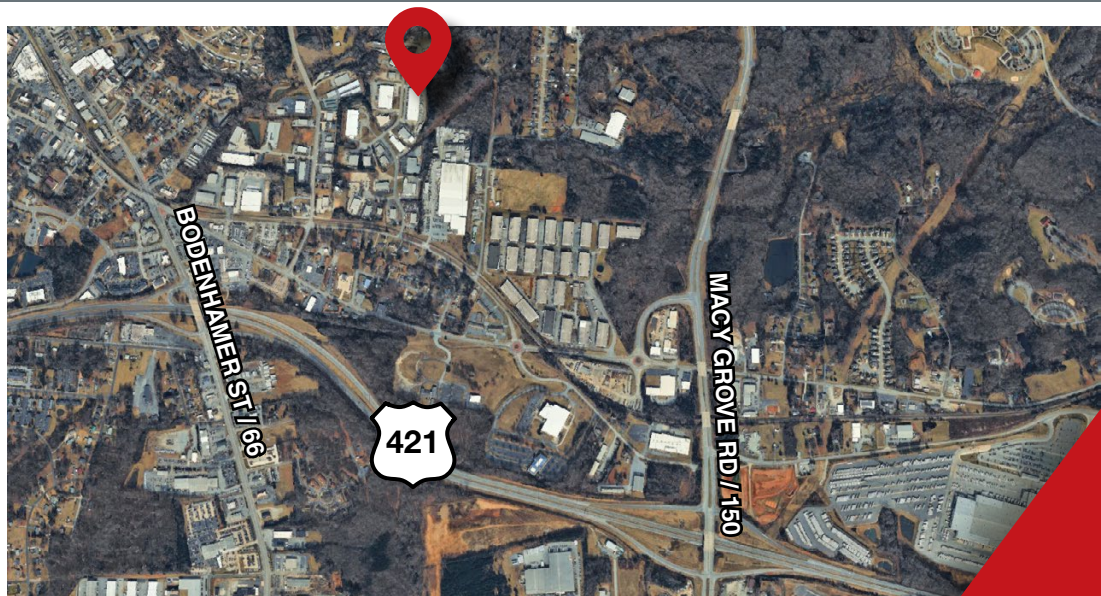
KERNERSVILLE, NC

FLEX SPACE  
*for*  
LEASE



±6,000 SF  
Flex Spaces

\$10.00/SF  
NNN



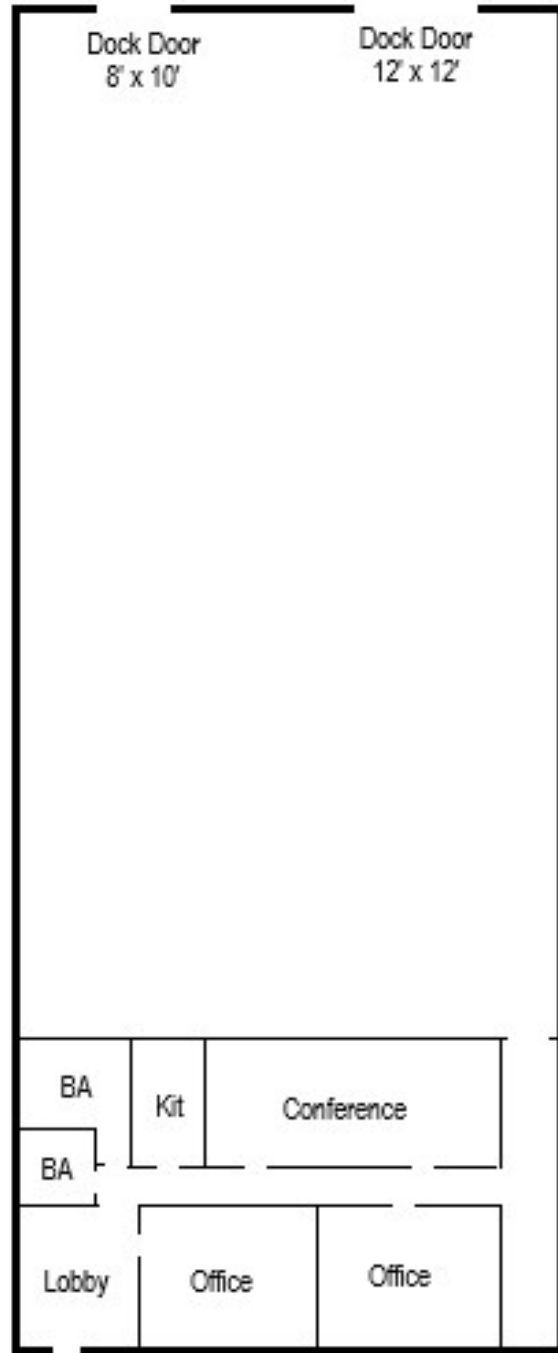
**NAI** Piedmont Triad  
Commercial Real Estate Services, World Wide

348 N Elm Street | Greensboro, NC 27101 | [naipt.com](http://naipt.com)

**BEN STURGILL**  
BROKER  
(O) 336.358.3229  
(C) 336.848.3046  
[bsturgill@naipt.com](mailto:bsturgill@naipt.com)

**Flex Space | ±6,000 SF**

- \$10.00 PSF NNN
- Office Space 1,000 SF
- Two Dock Height Doors - 8'x10' & 12'x12'
- 20' Ceilings
- Fully Sprinkled

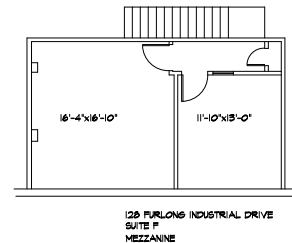
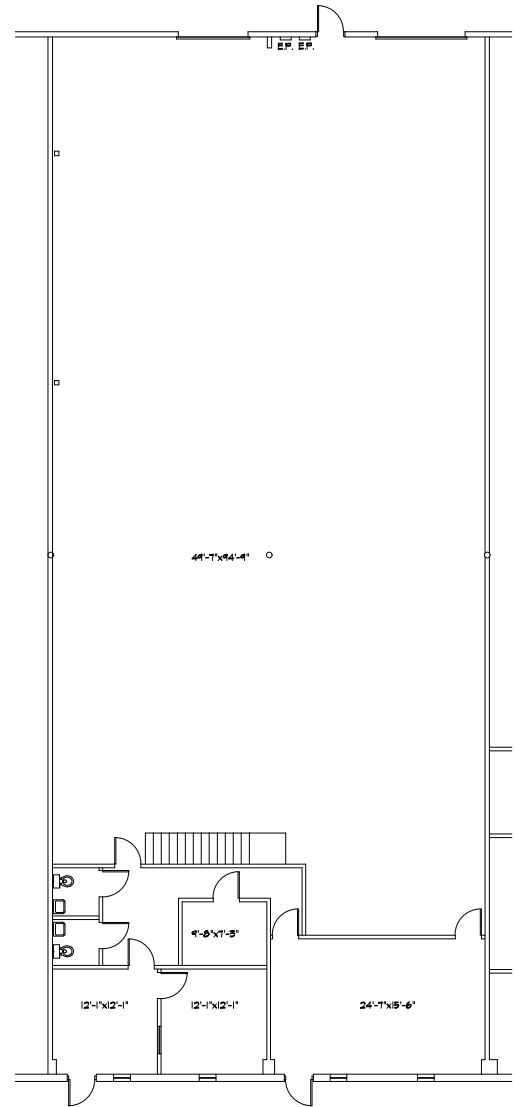


This material may contain content generated with AI assistance and publicly sourced data. NAI Piedmont Triad makes every effort to verify the information but makes no warranties or representations regarding the accuracy, completeness, or reliability of the information. Independent verification of all details is strongly encouraged. Prices, terms, and availability are subject to change without prior notice.

**BEN STURGILL**  
 BROKER  
 (O) 336.358.3229  
 (C) 336.848.3046  
 bsturgill@naipt.com

## Flex Space | ±6,000 SF

- 850 SF of Office
- 400 SF of Mezzanine Office
- One Dock Height Door
- One Drive In Door
- 480v Power
- \$10.00 PSF | NNN



This material may contain content generated with AI assistance and publicly sourced data. NAI Piedmont Triad makes every effort to verify the information but makes no warranties or representations regarding the accuracy, completeness, or reliability of the information. Independent verification of all details is strongly encouraged. Prices, terms, and availability are subject to change without prior notice.

### BEN STURGILL

BROKER

(O) 336.358.3229

(C) 336.848.3046

bsturgill@naipt.com