

2101 E EL SEGUNDO BLVD



2101 E El Segundo Blvd, Suite 505

For more
information

Erik Stiebel
[424.241.4795](tel:424.241.4795)
erik@crea-la.com
CA DRE License #02080746

CREA

2101 E EL SEGUNDO BLVD

Available

Now

Rent

Negotiable

Premises

1,000 - 4,813 SF

Term

Through 12/31/2027

Parking

3 per 1,000 SF



2101 E El Segundo Blvd, Suite 505

For more
information

Erik Stiebel

424.241.4795

erik@crea-la.com

CA DRE License #02080746

CREA

2101 E EL SEGUNDO BLVD



2101 E El Segundo Blvd, Suite 505

For more
information

Erik Stiebel
424.241.4795
erik@crea-la.com
CA DRE License #02080746

CREA

2101 E EL SEGUNDO BLVD



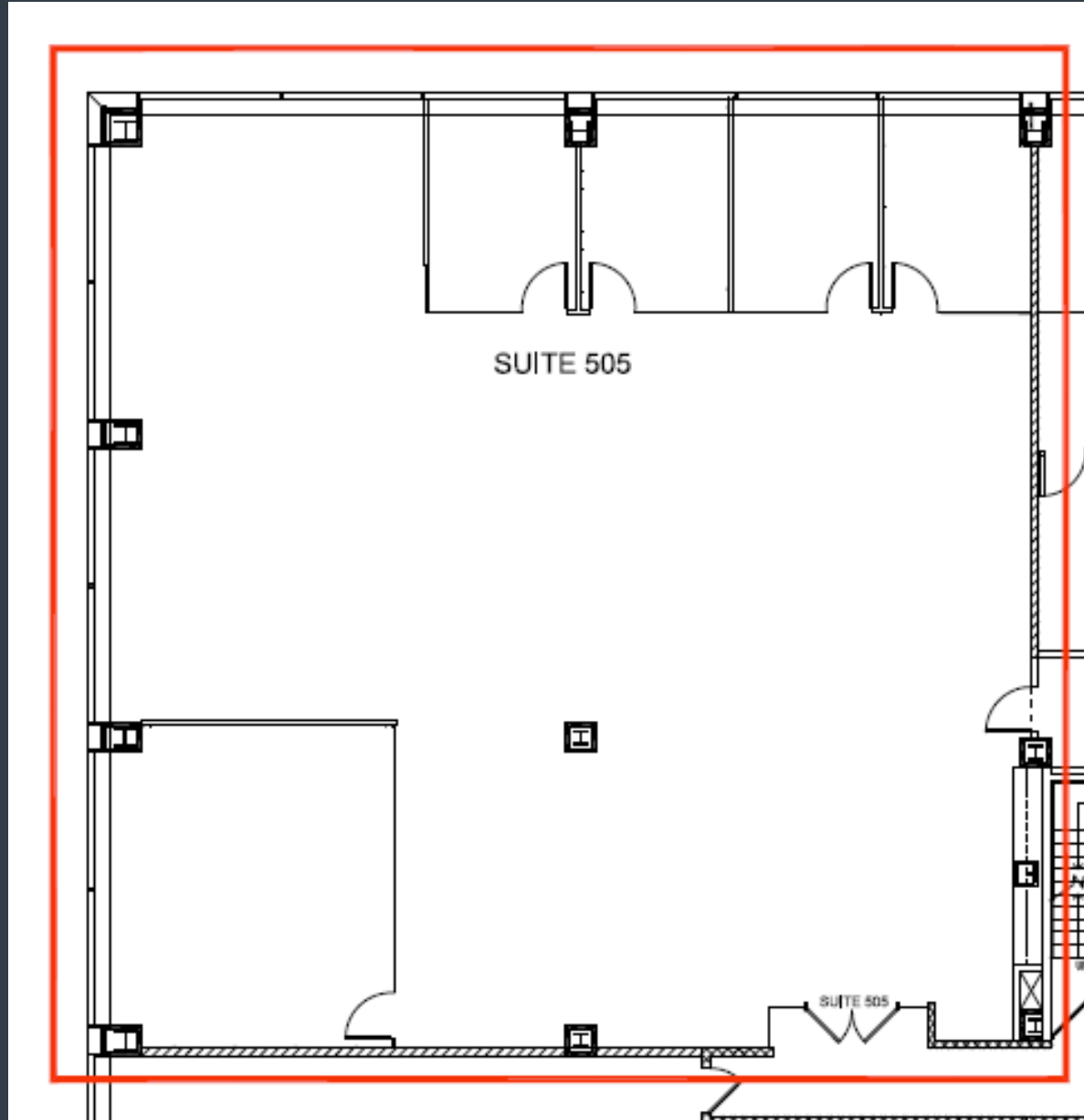
2101 E El Segundo Blvd, Suite 505

For more
information

Erik Stiebel
424.241.4795
erik@crea-la.com
CA DRE License #02080746

CREA

2101 E EL SEGUNDO BLVD



2101 E El Segundo Blvd, Suite 505

For more
information

Erik Stiebel

424.241.4795

erik@crea-la.com

CA DRE License #02080746

CREA