



# 15 YEAR ABSOLUTE NNN LEASE

ST JOSEPH, MISSOURI  
OFFERING MEMORANDUM



ACTUAL PROPERTY

## CHRIS HOLLENBECK

Vice Chair  
+1 602 224 4475  
chris.hollenbeck@cushwake.com  
AZ License No. SA584876000

## SHANE CARTER

Director  
+ 1 602 224 4442  
shane.carter@cushwake.com  
AZ License No. SA673156000

## SCOTT REID

Broker - ParaSell, Inc.  
broker@parasellinc.com  
+1 949 942 6578  
MO - 2019024102

In Association with ParaSell,  
Inc. | A Licensed Missouri  
Broker #2019035835





# DUTCH BROS 01

ST. JOSEPH, MISSOURI  
OFFERING MEMORANDUM

OFFERING

INVESTMENT HIGHLIGHTS  
EXECUTIVE SUMMARY

# 02

OVERVIEW

TENANT OVERVIEW

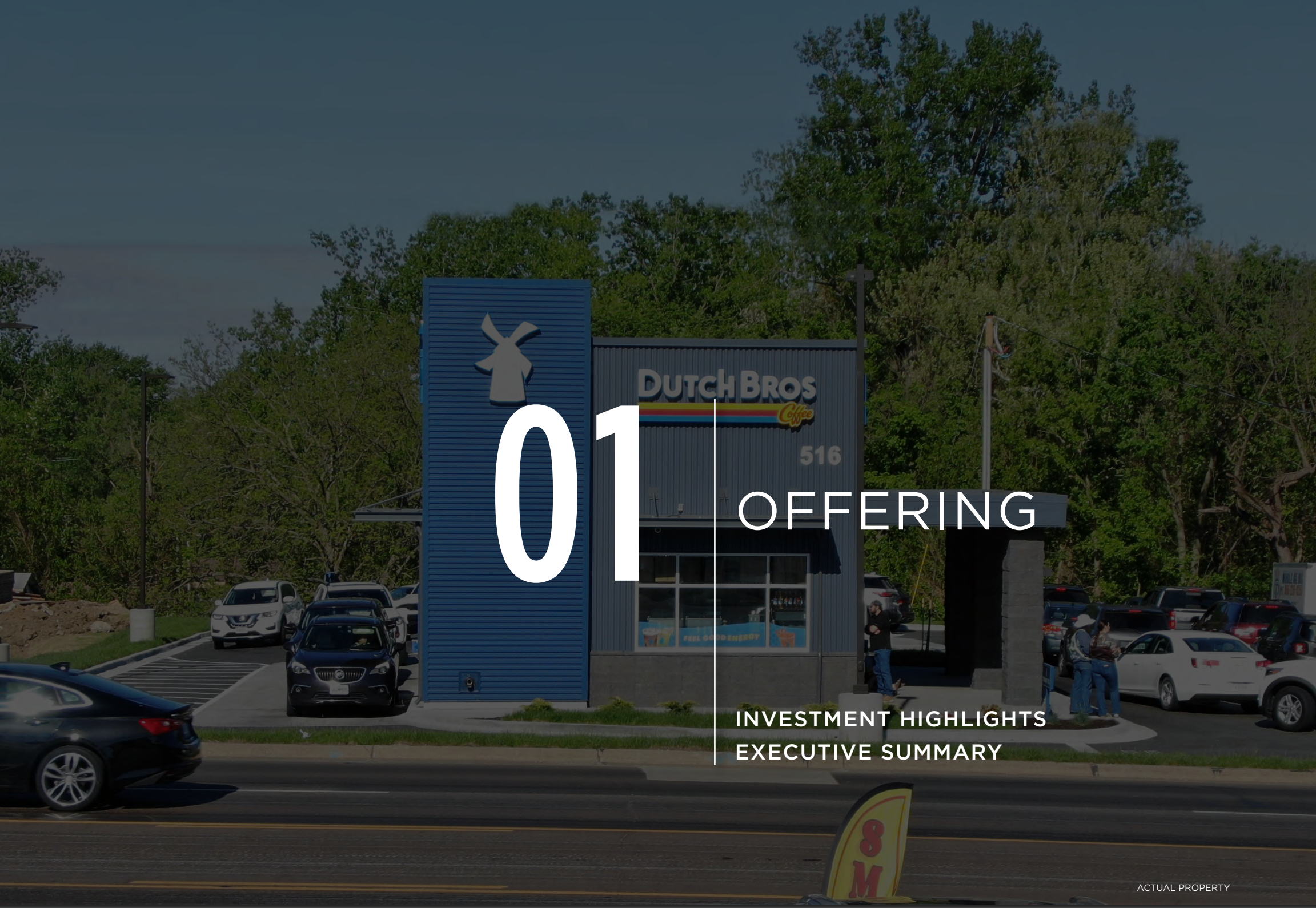
# 03

MARKET

AREA OVERVIEW  
AREA DEMOGRAPHICS



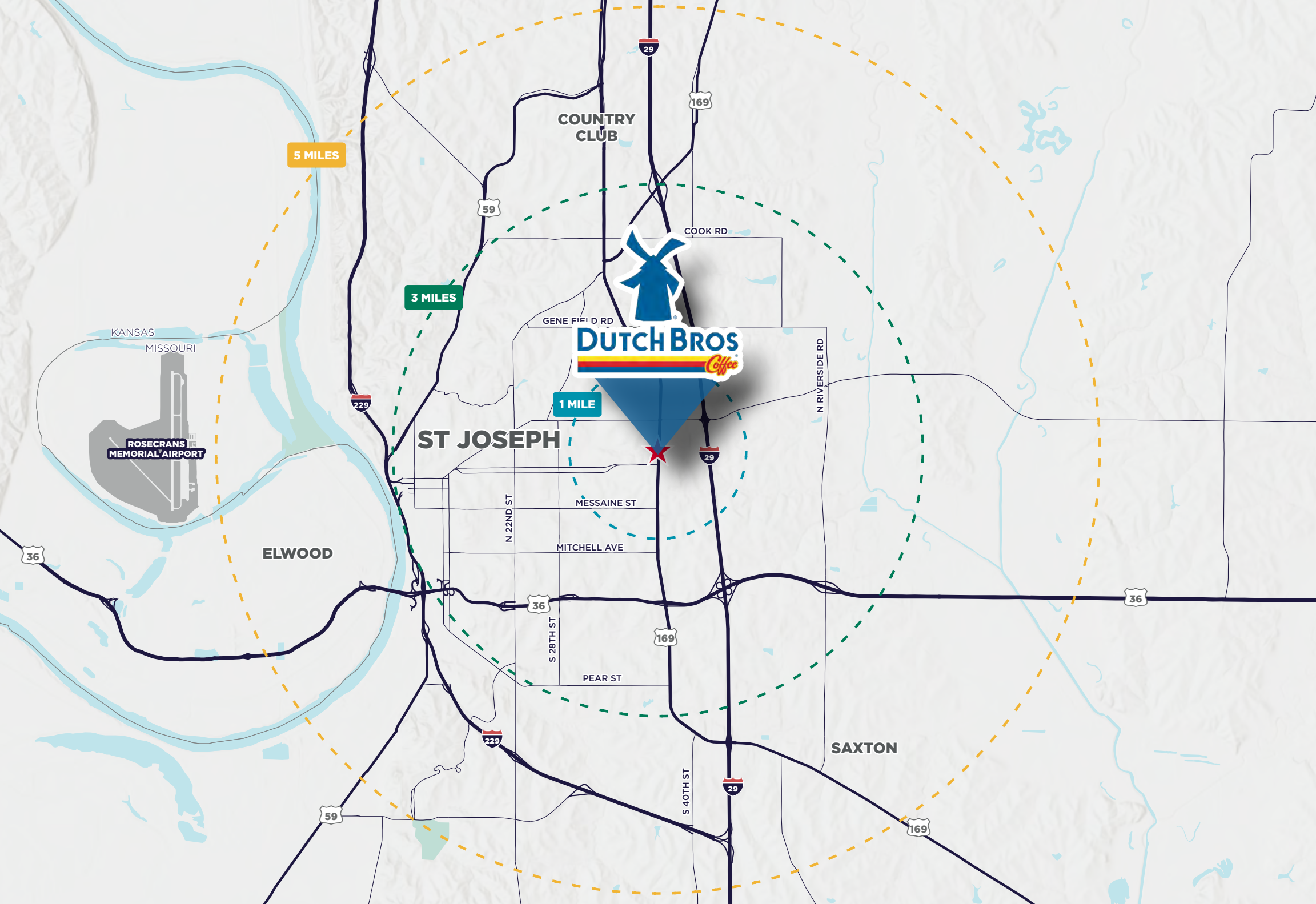
ACTUAL PROPERTY



# 01 OFFERING

INVESTMENT HIGHLIGHTS  
EXECUTIVE SUMMARY

ACTUAL PROPERTY



# INVESTMENT HIGHLIGHTS

<b>TENANT:</b>	Dutch Bros. Coffee
<b>GUARANTY:</b>	Boersma Bros. LLC (Corporate) (NYSE: BROS)
<b>LOCATION:</b>	514-516 N Belt Hwy, St Joseph, MO 64506
<b>LEASE TYPE:</b>	Absolute NNN Lease
<b>BUILDING SIZE:</b>	±950 SF
<b>LAND SIZE:</b>	±0.53 AC (±23,087 SF)
<b>YEAR BUILT:</b>	2026 (New Construction)
<b>RENT COMMENCEMENT:</b>	March 15, 2026
<b>LEASE EXPIRATION:</b>	March 14, 2041
<b>LEASE TERM:</b>	15 years
<b>OPTIONS:</b>	Three (3) five (5) year options
<b>RENT ADJUSTMENT:</b>	10% increases every 5 years
<b>APN:</b>	06-1.0-11-002-000-039.000
<b>LANDLORD RESPONSIBILITIES:</b>	None

<b>CURRENT NOI</b>	<b>PRICE</b>	<b>CAP</b>
<b>\$157,759</b>	<b>\$2,629,316</b>	<b>6.00%</b>

## RENT SCHEDULE:

TERM	YEARS	MONTHLY RENT	ANNUAL RENT	% INCREASE	CAP RATE
Primary	1-5	\$13,146.58	\$157,759.00	N/A	6.00%
Primary	6-10	\$14,461.24	\$173,534.90	10%	6.60%
Primary	11-15	\$15,907.37	\$190,888.39	10%	7.26%
Option 1	16-20	\$17,498.10	\$209,977.23	10%	7.99%
Option 2	21-25	\$19,247.91	\$230,974.95	10%	8.78%
Option 3	26-30	\$21,172.70	\$254,072.45	10%	9.66%

# EXECUTIVE SUMMARY

## INVESTMENT HIGHLIGHTS

- **Absolute NNN Lease**
- Brand New Construction
- Long Term 15 Year Primary Lease
- Corporate Guaranty
- 10% increases every 5 years

## TENANT HIGHLIGHTS

- 1,081 locations across 24 states
- 2025 revenue guidance of \$1.61-\$1.615 billion, reflecting continued strong growth
- Long-term expansion goal of 2,029 shops by 2029 with a total potential market of 7,000+ U.S. locations
- **Market Cap of \$9.1 billion**
- Fast-growing drive-thru beverage operator known for high-volume, efficient shop model and loyal customer base
- Publicly traded on the NYSE: BROS

## LOCATION HIGHLIGHTS

- Strategically situated along Belt Highway, a primary north-south arterial and major traffic corridor in St. Joseph, MO
- High average household incomes over \$83,000 in a 5 mile radius
- ±2 miles from Missouri Western State University (±3,800 students)



REPRESENTATIVE PHOTO



Firestone

JCPenney

Perkins  
AMERICAN FOOD CO.

EAST HILLS  
SHOPPING CENTER

Office DEPOT

DOLLAR TREE

usbank

UNITED  
CONSUMERS  
CREDIT UNION

**DUTCH BROS**  
Coffee

McDonald's

BEIT HIGHWAY





# DUTCH BROS Coffee

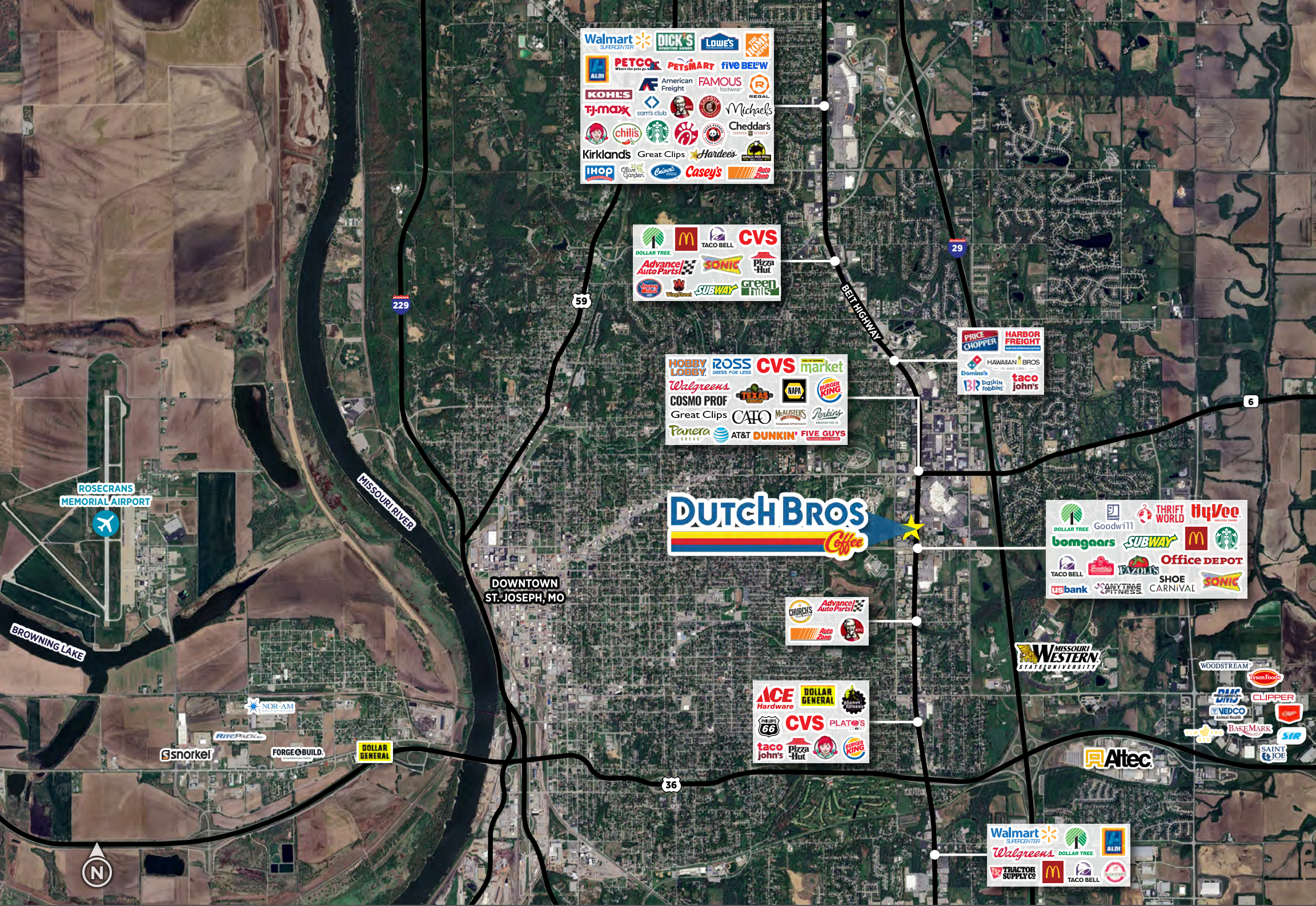




# DUTCH BROS

Coffee





Walmart SUPERCENTER, DICK'S Sporting Goods, LOWE'S, ALDI, PETCO, PETS MART, FIVE BELOW, American Freight, FAMOUS Footwear, KOHL'S, sams club, KFC, MICHAEL'S, TJ-maxx, Starbucks, Cheddar's, Kirklands, Great Clips, Hardees, IHOP, Olive Garden, Casey's, Auto Zone

DOLLAR TREE, McDonald's, TACO BELL, CVS, Advance! Auto Parts, SONIC, Pizza Hut, SUBWAY, Green Mills

HOBBY LOBBY, ROSS DRESS FOR LESS, CVS market, Walgreens, COSMO PROF, Great Clips, CAFO, Dunkin', FIVE GUYS, NAPA, BURGER KING, Panera, AT&T

PRICE CHOPPER, HARBOR FREIGHT, HAWAIIAN BROS, Domino's, Baskin Robbin's, taco john's

**Dutch Bros Coffee**

DOLLAR TREE, Goodwill, THRIFT WORLD, HyVee, bongaars, SUBWAY, McDonald's, Starbucks, Office DEPOT, TACO BELL, Pazo's, SHOE CARNIVAL, USbank, ANYTIME FITNESS, SONIC

Church's, Advance! Auto Parts, Auto Zone, KFC

ACE Hardware, DOLLAR GENERAL, CVS, PLATOS, taco john's, Pizza Hut, BURGER KING

MISSOURI WESTERN STATE UNIVERSITY

WOODSTREAM, Tyson Foods, CLIPPER, VEDCO Animal Health, BAKEMARK, SIK, SAINT JOE

Altec

Walmart SUPERCENTER, Walgreens, DOLLAR TREE, ALDI, TRACTOR SUPPLIES, McDonald's, TACO BELL



02

OVERVIEW

TENANT OVERVIEW

ACTUAL PROPERTY

# TENANT OVERVIEW

Dutch Bros. Coffee was founded in 1992 by brothers Dane and Travis Boersma in Grants Pass, Oregon after government regulations forced the downsizing of their family's third-generation dairy farm. Seeking a new path forward, the brothers turned to coffee—starting with a double-head espresso machine, 100 pounds of beans, and a simple pushcart. They began offering free cups of coffee along the railroad tracks to anyone willing to stop and try it.

This authentic, community-first approach remains central to the brand today, and Dutch Bros continues to give away more than 1 million free drinks per year.

What began as a small local venture has since evolved into one of the fastest-growing beverage concepts in the United States. As of 2025, Dutch Bros operates 1,081 locations across 24 states, supported by more than 25,000 employees nationwide. The company is aggressively scaling its footprint, targeting 160 new shop openings in 2025 and approximately 175 openings in 2026, with a long-term plan to reach 2,029 shops by 2029 and an estimated 7,000+ total U.S. market potential.

Dutch Bros went public on the New York Stock Exchange in 2021 (NYSE: BROS) to fuel its rapid expansion. The brand continues to demonstrate exceptional performance, with 2025 full-year revenue guidance of \$1.61–\$1.615 billion and projected same-store sales growth of approximately 5%. Its efficient, high-volume drive-thru model produces strong unit economics, highlighted by an updated 2025 average unit volume (AUV) of approximately \$2.05 million.

As of late 2025, Dutch Bros carries a market capitalization of roughly \$9.1 billion, cementing its position as a dominant and rapidly expanding player in the national beverage market.

For more information please visit: [www.dutchbros.com](http://www.dutchbros.com)

**1992** Founded

**±1,081**  
Locations in operation



**±25,000**  
Employees



**24**  
States



# 03

## MARKET

AREA OVERVIEW  
AREA DEMOGRAPHICS

ACTUAL PROPERTY

# ST. JOSEPH, MO



# AREA OVERVIEW

St. Joseph, Missouri, is a historic and economically diverse city located along the Missouri River in the northwestern part of the state. As one of Missouri's most important regional hubs, St. Joseph blends deep historical roots with a steadily evolving economic and cultural landscape. Positioned approximately 30 miles north of the Kansas City metropolitan area, the city benefits from both its independent identity and its strategic proximity to one of the nation's fastest-growing metros.

## **History:**

Founded in 1843 by fur trader Joseph Robidoux, St. Joseph quickly rose to prominence as a gateway to the American West. Its strategic location on the Missouri River made it a key point of departure for pioneers, settlers, and entrepreneurs heading west during the nation's expansion. The city later became world-famous as the eastern terminus of the Pony Express, symbolizing its role in connecting the rapidly growing United States. Many historic buildings, districts, and museums throughout St. Joseph continue to honor its frontier legacy.

## **Culture and Arts:**

St. Joseph boasts a vibrant cultural scene supported by museums, performing

arts venues, and historic districts. The Pony Express National Museum, Jesse James Home Museum, and St. Joseph Museums complex draw visitors year-round. Downtown St. Joseph continues to undergo revitalization, offering locally owned restaurants, boutique shops, galleries, and community events that strengthen its small-city charm.

The city is also home to the Missouri Theater, a restored 1927 landmark known for its ornate architecture, live performances, and regional arts programming. Annual events such as Trails West!® Festival, concerts, and seasonal celebrations reinforce St. Joseph's growing cultural presence.

## **Economy:**

St. Joseph has a diverse and stable economy, anchored by key industries such as healthcare, manufacturing, agribusiness, logistics, and education. Major employers include Mosaic Life Care, Adept Ag, Nestlé Purina, Herzog, Altec Industries, and Missouri Western State University. The city is also recognized as a regional center for food processing and animal health sciences, benefiting from its location within the Animal Health Corridor, the largest concentration of animal health companies in the world.

Its proximity to Kansas City provides additional workforce and distribution advantages while allowing St. Joseph to maintain its competitive cost of living and business-friendly environment.

## **Sports:**

St. Joseph offers a strong recreation network, with numerous parks, trails, and outdoor amenities. The city gained national attention for serving as the training camp site for the Kansas City Chiefs at Missouri Western State University, drawing thousands of visitors each summer. Residents also enjoy access to golf courses, the Remington Nature Center, fishing areas, and riverfront recreation along the Missouri River.

## **Education and Research:**

Educational opportunities are anchored by Missouri Western State University, a public university offering undergraduate and graduate programs that support the region's workforce development. The school also houses the Craig School of Business and fosters innovation through partnerships with local industries. St. Joseph's public and private school systems, career centers, and healthcare education programs contribute to a well-rounded regional education network.

# AREA DEMOGRAPHICS

	1 Mile	3 Miles	5 Miles
<b>POPULATION GROWTH</b>			
<b>2025</b>	6,487	56,819	71,966
<b>2030</b>	6,434	55,994	70,895
<b>Daytime Population</b>	12,414	65,436	79,574
<b>AVERAGE HH INCOME</b>			
<b>2025</b>	\$72,421	\$82,710	\$83,671
<b>2030</b>	\$79,788	\$91,995	\$92,945

# PRIVATE CAPITAL GROUP WESTERN REGION

ONE team THIRTEEN markets





## CHRIS HOLLENBECK

Vice Chair

+1 602 224 4475

chris.hollenbeck@cushwake.com

AZ License No. SA584876000

## SHANE CARTER

Director

+ 1 602 224 4442

shane.carter@cushwake.com

AZ License No. SA673156000

## SCOTT REID

Broker - ParaSell, Inc.

broker@parasellinc.com

+1 949 942 6578

MO - 2019024102



**FIRST STREET**  
BROKERAGE  
SONOMA | CA

In Association with ParaSell, Inc.

| A Licensed Missouri Broker

#2019035835

2555 E. Camelback Rd, Suite 400

Phoenix, Arizona 85016

ph:+1 602 954 9000 | fx:+1 602 253 0528

[www.cushmanwakefield.com](http://www.cushmanwakefield.com)



©2025 Cushman & Wakefield. All rights reserved. The information contained in this communication is strictly confidential. This information has been obtained from sources believed to be reliable but has not been verified. NO WARRANTY OR REPRESENTATION, EXPRESS OR IMPLIED, IS MADE AS TO THE CONDITION OF THE PROPERTY (OR PROPERTIES) REFERENCED HEREIN OR AS TO THE ACCURACY OR COMPLETENESS OF THE INFORMATION CONTAINED HEREIN, AND SAME IS SUBMITTED SUBJECT TO ERRORS, OMISSIONS, CHANGE OF PRICE, RENTAL OR OTHER CONDITIONS, WITHDRAWAL WITHOUT NOTICE, AND TO ANY SPECIAL LISTING CONDITIONS IMPOSED BY THE PROPERTY OWNER(S). ANY PROJECTIONS, OPINIONS OR ESTIMATES ARE SUBJECT TO UNCERTAINTY AND DO NOT SIGNIFY CURRENT OR FUTURE PROPERTY PERFORMANCE.

ACTUAL PROPERTY