



# WS DEVELOPMENT

EPPING CROSSING  
 7-36 FRESH RIVER ROAD  
 EPPING, NH 03046  
 SPACE #29

## SPACE 27

80'-6<sup>1</sup>/<sub>16</sub>" LL TO LL

77'-4<sup>1</sup>/<sub>16</sub>" CLR.

STUD

## SPACE 29 2,999 S.F.

CH 11'-0"  
 HVAC 13'-10<sup>5</sup>/<sub>16</sub>"  
 SP. FEEDS 13'-1<sup>3</sup>/<sub>8</sub>"

RTU

DECK 20'-2<sup>1</sup>/<sub>8</sub>"  
 JOIST 17'-4<sup>7</sup>/<sub>8</sub>"

DOOR 6'-0"X7'-0"

36'-8<sup>3</sup>/<sub>16</sub>" CLR.  
 37'-4<sup>3</sup>/<sub>16</sub>" LL TO LL

DOOR 3'-0"X7'-0"

DECK 18'-1<sup>1</sup>/<sub>4</sub>"  
 JOIST 15'-6<sup>1</sup>/<sub>4</sub>"

RESTROOM 1  
 CH: 8'-0"

RESTROOM 2  
 CH: 8'-0"

CMU W/STUD

STUD

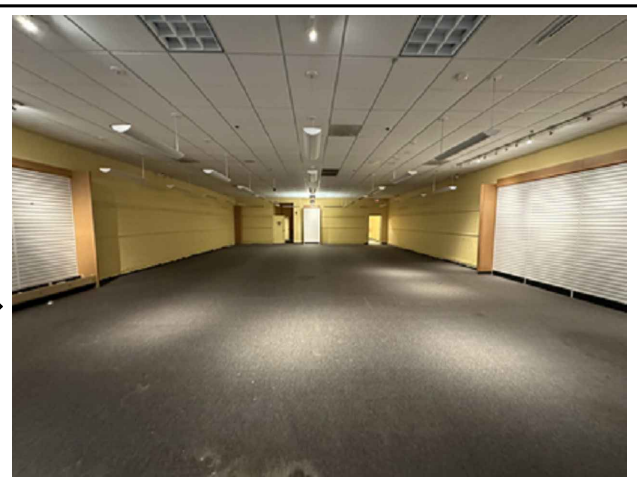
## SPACE 31

1 FLOOR PLAN  
 A1 N.T.S.

IMAGES



1 EXTERIOR



2 INTERIOR

SITE MAP



DATA	
AREA:	2,999 S.F.
BULKHEAD HT:	SEE 1 A2
AMPERAGE:	S/O: 100A
VOLTAGE:	480/277V
SPRINKLERS:	YES
HVAC TYPE:	RTU

LEGEND	
---	LEASE LINE
---	WALL LINE
---	SILL LINE
---	COLUMN LINE
(E)	ELECTRIC PANEL
(G)	GAS METER
(M)	ELECTRIC METER
(S/R)	SPRINKLER RISER
(HW)	WATER HEATER
(W)	WATER METER

**DISCLAIMER**  
 ALL PARTIES ACKNOWLEDGE THAT THIS PLAN IS FOR IDENTIFICATION PURPOSES ONLY AND DOES NOT CONSTITUTE ANY COVENANT OR REPRESENTATION BY "WS DEVELOPMENT" OR "NEPS, INC." THAT THE CONDITIONS SHOWN EXIST, OR WILL CONTINUE TO EXIST.

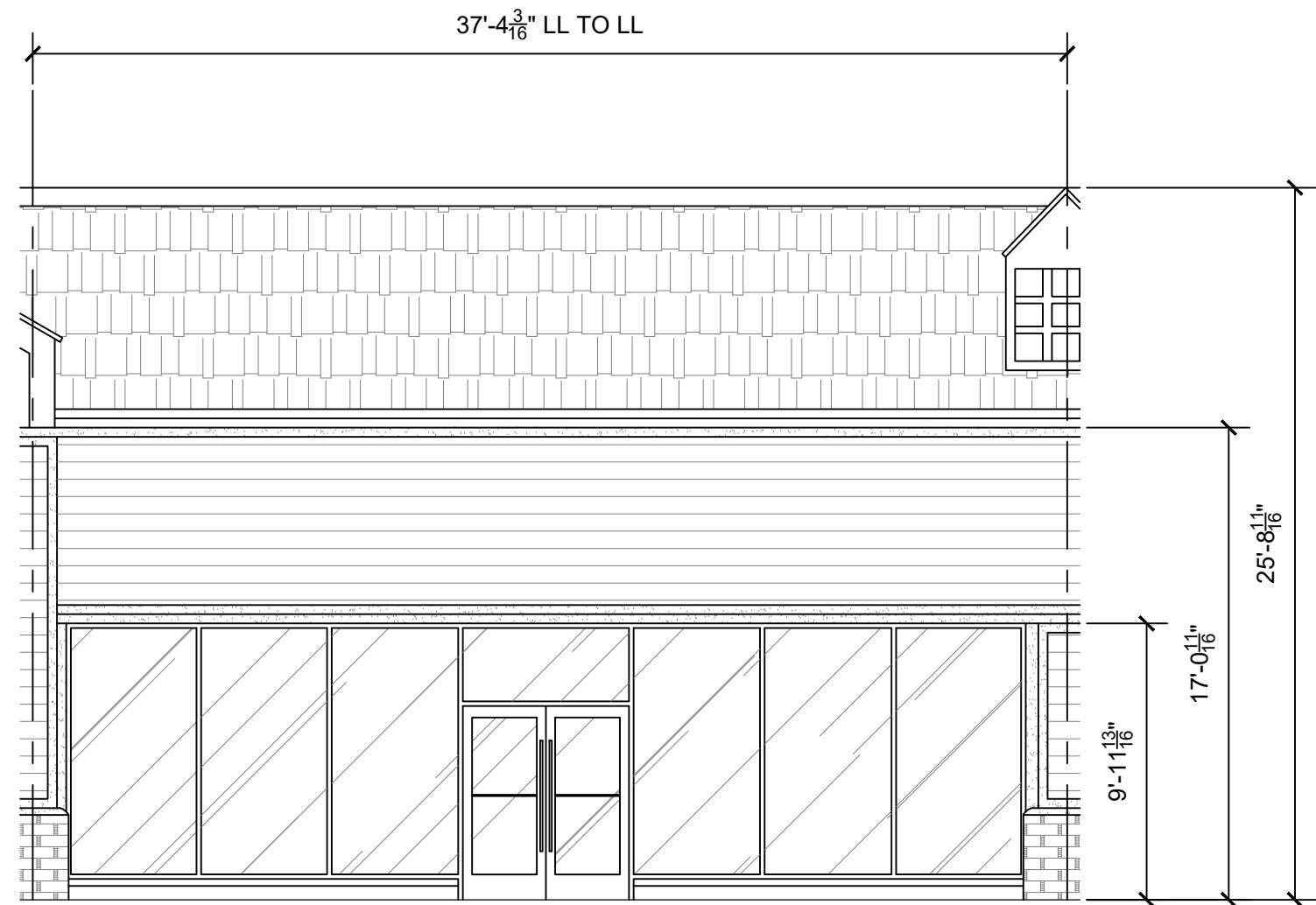
REV	DATE	DESCRIPTION

PROJECT NO.:	JJO
DRAWN BY:	DJB
CHECKED BY:	DJB
ISSUE DATE:	02-05-24



# WS DEVELOPMENT



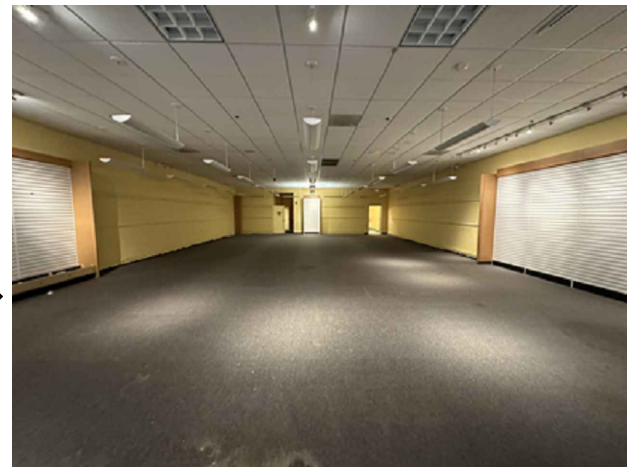
1 STOREFRONT ELEVATION  
A2 N.T.S.

EPPING CROSSING  
7-36 FRESH RIVER ROAD  
EPPING, NH 03046  
SPACE #29

IMAGES



1 EXTERIOR



2 INTERIOR

SITE MAP



DATA	
AREA:	2,999 S.F.
BULKHEAD HT:	SEE 1 A2
AMPERAGE:	S/O: 100A
VOLTAGE:	480/277V
SPRINKLERS:	YES
HVAC TYPE:	RTU

LEGEND	
LEASE LINE	---
WALL LINE	---
SILL LINE	---
COLUMN LINE	---
(E) ELECTRIC PANEL	(G) GAS METER
(M) ELECTRIC METER	(S/R) SPRINKLER RISER
(HW) WATER HEATER	(W) WATER METER

**DISCLAIMER**  
ALL PARTIES ACKNOWLEDGE THAT THIS PLAN IS FOR IDENTIFICATION PURPOSES ONLY AND DOES NOT CONSTITUTE ANY COVENANT OR REPRESENTATION BY "WS DEVELOPMENT" OR "NEPS, INC." THAT THE CONDITIONS SHOWN EXIST, OR WILL CONTINUE TO EXIST.

REV	DATE	DESCRIPTION

PROJECT NO.: JJO  
DRAWN BY: JJO  
CHECKED BY: DFB  
ISSUE DATE: 02-05-24