

Hughes Century Crossing & Norwalk Central

Norwalk, Iowa 50211
www.cbre.com/desmoines

Commercial Land

Commercial development lot available for sale in the Hughes Century Crossing portion of Norwalk Central, a large mixed-use development area in the heart of Norwalk. The available lot is located just east of Hwy-28 along Chatham Ave and across from the Gregg Young Sports Campus. The parcel is zoned Town Center, which allows for a variety of commercial uses.

Price

+ \$1,719,876 (\$12.00/SF)

Zoning

+ Town Center (TC)

Available Land

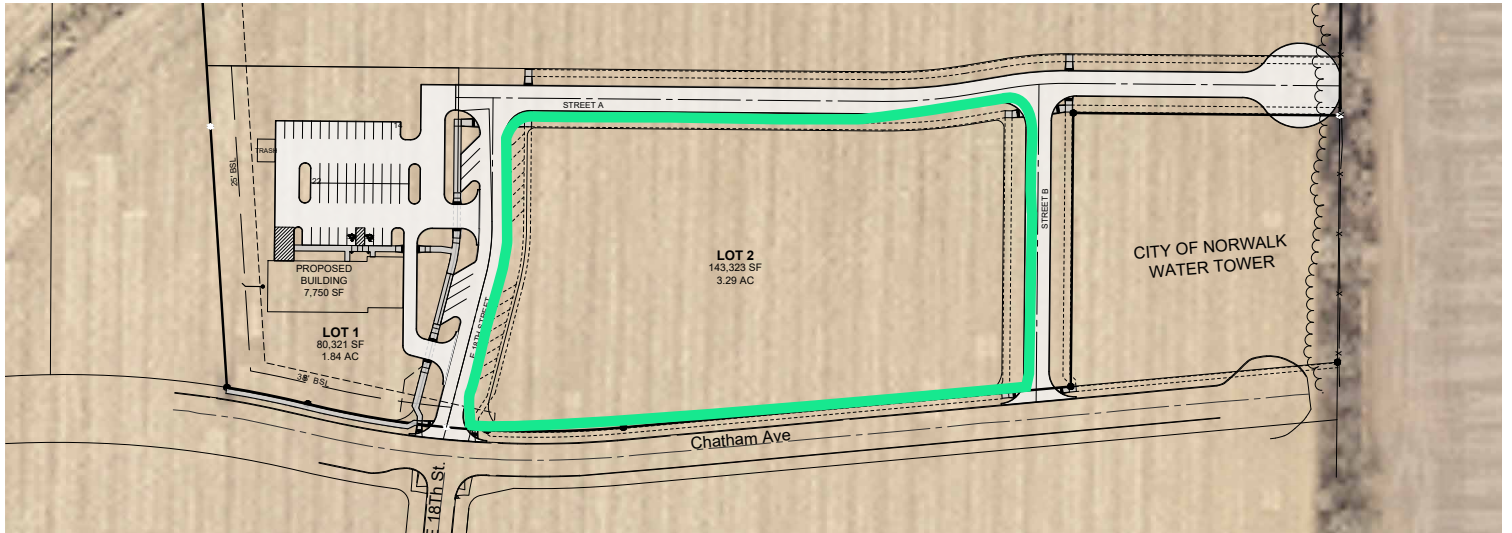
+ Up to 3.29 Acres (143,323 SF)

+ Can be subdivided

+ All utilities to site



Site Plan



Norwalk

Family-friendly, economically strong, with small-town ambience and nearby, city-sized opportunity, Norwalk has everything you're looking for in a place to live. In fact, in its 2010 survey of 863 U.S. communities, Bloomberg BusinessWeek named Norwalk as the Best Affordable Suburb in Iowa. Just 10 minutes from the metro, Norwalk offers livability in a fresh, family-oriented package: safety, excellent schools, housing diversity, green space. Whatever your criteria for a compelling community, take notice of Norwalk.

One of the safest cities in Iowa for five years running

Location is everything and Norwalk's proximity to the Des Moines International Airport, major highways and interstates, as well as shared borders with Des Moines and West Des Moines make it a prime location for development, career commuting, and top rated schools. We are proud to say that Norwalk has been ranked one of the safest cities in Iowa for five years running. Be sure to check out our growing list of great restaurants, gorgeous golf courses and beautiful Lake Colchester!

Norwalk Central Development

Norwalk Central is a large mixed-use development area in the heart of the city that stretches between Beardsley St. to High Rd. along the east side of Sunset Dr./HWY 28.

The next areas to continue development within Norwalk Central is The Gregg Young Sports Campus which will include the City State Bank Norwalk Fieldhouse, Heartland Sports Fields, Sportsplex USA, and retail space.

Some existing developments in Norwalk Central include the Colonial Parkway district which hosts City State Bank, Elizabeth Holland Park with ponds and trail, and a Light Industrial Park (Capital City Fruit, Loffredo Fresh Produce, K&R Building Supply).

This area is being designed to provide the community, visitors and tourists with an all-encompassing experience. The area will entail multiple opportunities for recreation, sporting venues, fitness, entertainment, retail shopping, service providers, eateries, hotels, and public spaces such as parks, trails, amphitheater, and civic/community facilities.

Source: norwalkcentral.com



AREA DEMOGRAPHICS	1 MILE	3 MILES	5 MILES
2024 Businesses	101	360	1,284
2024 Employees	1,106	6,010	21,165
2024 Population - Current Year Estimate	7,565	18,121	55,547
2020-2024 Annual Population Growth Rate	2.38%	1.66%	0.99%
2024 Daytime Population	5,062	14,591	47,308
Average Household Income	\$129,937	\$112,565	\$97,170
Median Household Income	\$101,112	\$84,147	\$72,825
2024 Per Capita Income	\$48,228	\$42,902	\$38,786
2024 Households - Current Year Estimate	2,747	6,918	22,126
2029 Households - Five Year Projection	3,034	7,483	23,285
2024 Average Household Size	2.71	2.59	2.48



norwalkcenter.org

Location



Contact Us

David Eckley

Vice President

+1 515 314 1715

david.eckley@cbre.com

Licensed in the State of Iowa

© 2024 CBRE, Inc. All rights reserved. This information has been obtained from sources believed reliable, but has not been verified for accuracy or completeness. You should conduct a careful, independent investigation of the property and verify all information. Any reliance on this information is solely at your own risk. CBRE and the CBRE logo are service marks of CBRE, Inc. All other marks displayed on this document are the property of their respective owners, and the use of such logos does not imply any affiliation with or endorsement of CBRE. Photos herein are the property of their respective owners. Use of these images without the express written consent of the owner is prohibited.