



# PUYALLUP MEDICAL CLINIC

*6,566 SF Single Story Medical  
Office Building For Lease*

800 S MERIDIAN, PUYALLUP, WA 98371

# PUYALLUP MEDICAL CLINIC



## PROPERTY HIGHLIGHTS

Medical clinic buildout - 6,566 SF  
(entire building)

Join the expansive medical hub of Good Samaritan Hospital

Great exposure on S Meridian & easy access to SR-512

Ample parking for medical users at 8.5/1,000 RSF

Located in downtown Puyallup with immediate access to Good Samaritan Hospital

## DREW FRAME, SIOR

253.948.7032

drew.frame@kidder.com

## WILL FRAME

253.948.6895

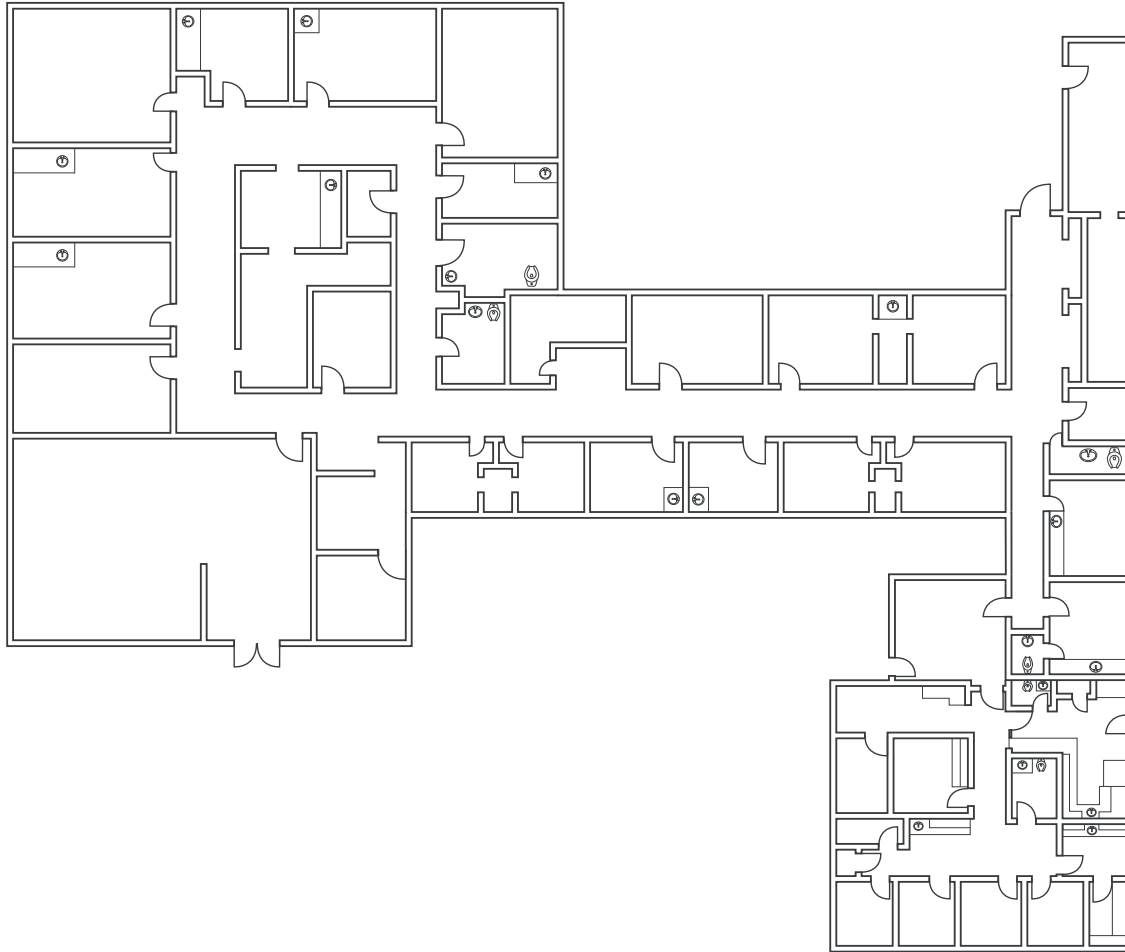
will.frame@kidder.com

## KIDDER.COM

This information supplied herein is from sources we deem reliable. It is provided without any representation, warranty, or guarantee, expressed or implied as to its accuracy. Prospective Buyer or Tenant should conduct an independent investigation and verification of all matters deemed to be material, including, but not limited to, statements of income and expenses. Consult your attorney, accountant, or other professional advisor.



# FLOOR PLAN



6,566 SF

AVAILABLE

*RATE*

CONTACT BROKERS

[KIDDER.COM](http://KIDDER.COM)

This information supplied herein is from sources we deem reliable. It is provided without any representation, warranty, or guarantee, expressed or implied as to its accuracy. Prospective Buyer or Tenant should conduct an independent investigation and verification of all matters deemed to be material, including, but not limited to, statements of income and expenses. Consult your attorney, accountant, or other professional advisor.



# PUYALLUP MEDICAL CLINIC



[KIDDER.COM](http://KIDDER.COM)

This information supplied herein is from sources we deem reliable. It is provided without any representation, warranty, or guarantee, expressed or implied as to its accuracy. Prospective Buyer or Tenant should conduct an independent investigation and verification of all matters deemed to be material, including, but not limited to, statements of income and expenses. Consult your attorney, accountant, or other professional advisor.



PUYALLUP MEDICAL CLINIC

21 MIN

TACOMA

30 MIN

FEDERAL WAY

25 MIN

LAKESIDE

SUBJECT PROPERTY

PACIFIC NORTHWEST DERMATOLOGY

GOOD SAMARITAN HOSPITAL

MARY BRIDGE CHILDREN'S URGENT CARE

PUYALLUP DERMATOLOGY CLINIC

EAR NOSE THROAT & ALLERGY ASSOCIATES

FRANCISCAN MEDICAL CLINIC

NORTHWEST MEDICAL SPECIALTIES

SOUTH HILL MALL

	JCPenney	DICK'S SPORTING GOODS
★macy's	ULTA	OLD NAVY
REGAL	GENE JUAREZ SALONS & SPA'S	DSW DESIGNER SHOE WAREHOUSE

Walmart	THE HOME DEPOT	Total Wine & MORE
BIG LOTS!	PET SMART	SPORTSMAN'S WAREHOUSE
HARBOR FREIGHT	LOWE'S	HOBBY LOBBY

PIERCE COLLEGE PUYALLUP

COSTCO WHOLESALE

112TH ST E

39TH AVE SE

S MERIDIAN

512

512



KIDDER.COM

This information supplied herein is from sources we deem reliable. It is provided without any representation, warranty, or guarantee, expressed or implied as to its accuracy. Prospective Buyer or Tenant should conduct an independent investigation and verification of all matters deemed to be material, including, but not limited to, statements of income and expenses. Consult your attorney, accountant, or other professional advisor.

