

AVAILABLE FOR LEASE  
6370 N. FIGARDEN DRIVE | SUITE 104

# VILLAGE WALK SHOPPING CENTER

FRESNO, CA



**Shane Sousa**  
Sales Associate  
t. 559-447-6221  
shane@retailcalifornia.com  
CA RE Lic. #02152527

**Nick Frechou**  
Senior Vice President  
t. 559-447-6266  
nick@retailcalifornia.com  
CA RE Lic. #01887999

Independently Owned and Operated | Corporate License #00020875 | [retailcalifornia.com](http://retailcalifornia.com)

**FRESNO OFFICE:** 7480 N. Palm Ave. #101, Fresno, CA 93711, t. 559-432-6200

The distributor of this communication is performing acts for which a real estate license is required. The information contained herein has been obtained from sources deemed reliable but has not been verified and no guarantee, warranty or representation, either express or implied, is made with respect to such information. Terms of sale or lease and availability are subject to change or withdrawal without notice.

# VILLAGE WALK SHOPPING CENTER

FRESNO, CA

# PROPERTY

INFORMATION

## LOCATION DESCRIPTION

VillageWalk is located at the NEC of Bullard & Figarden in Fresno, CA also known as Fig Garden Loop.

## PROPERTY HIGHLIGHTS

This area of Northwest Fresno offers strong demographics in a newer established neighborhood. The subject property offers abundant parking and a great anchor tenant in Crunch Fitness. Population within a 3-mile radius is 106,059±. Figarden Drive experiences 39,441± cars per day.

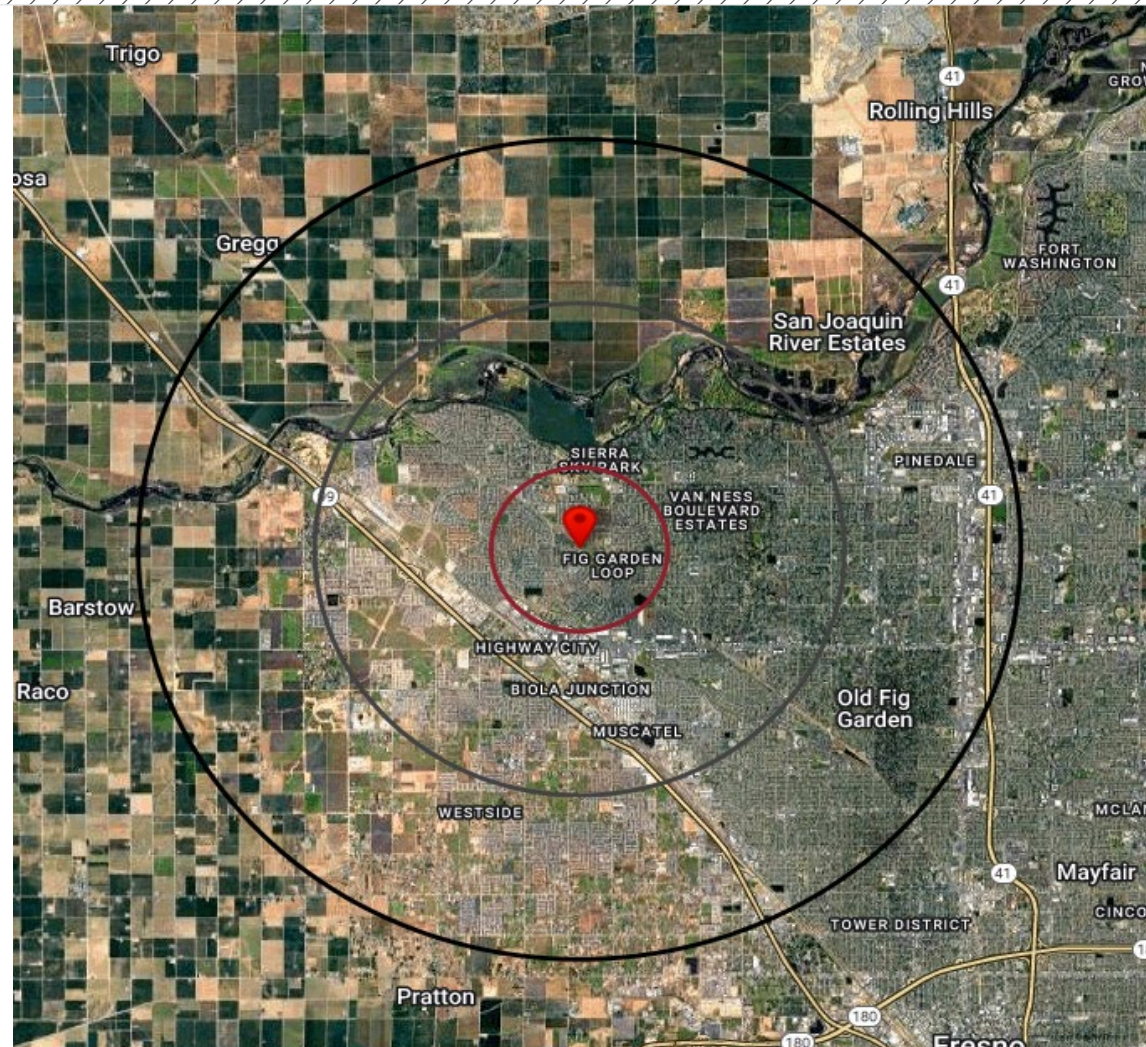
## AVAILABILITY

**Suite 104:** 3,100± SF

**Lease Rate:** Please contact agent for more information

|                   | DEMOGRAPHICS                       | 1 MILE RADIUS | 3 MILE RADIUS | 5 MILE RADIUS |
|-------------------|------------------------------------|---------------|---------------|---------------|
| <b>POPULATION</b> | 2030 Projection                    | 21,786        | 107,764       | 213,745       |
|                   | 2025 Estimate                      | 21,581        | 106,059       | 212,235       |
|                   | Growth 2025-2030                   | 0.95%         | 1.61%         | 0.71%         |
|                   | Growth 2020-2025                   | 3.57%         | 4.58%         | 1.80%         |
|                   | Growth 2010-2020                   | 4.35%         | 9.15%         | 8.30%         |
| <b>HOUSEHOLD</b>  | 2030 Projection                    | 8,125         | 37,201        | 73,485        |
|                   | 2025 Estimate                      | 7,997         | 36,588        | 72,912        |
|                   | Growth 2025-2030                   | 1.61%         | 1.68%         | 0.79%         |
|                   | Growth 2020-2025                   | 3.97%         | 4.00%         | 1.79%         |
|                   | Growth 2010-2020                   | 5.96%         | 7.88%         | 6.38%         |
|                   | <b>2025 Est. Average HH Income</b> | \$95,416      | \$115,689     | \$102,492     |

Source: Claritas 2025



## TRAFFIC COUNTS

39,441± ADT

17,087± ADT

Figarden Drive at Santa Fe Avenue  
(Intersection)

Bullard Avenue at Figarden Drive  
(Intersection)

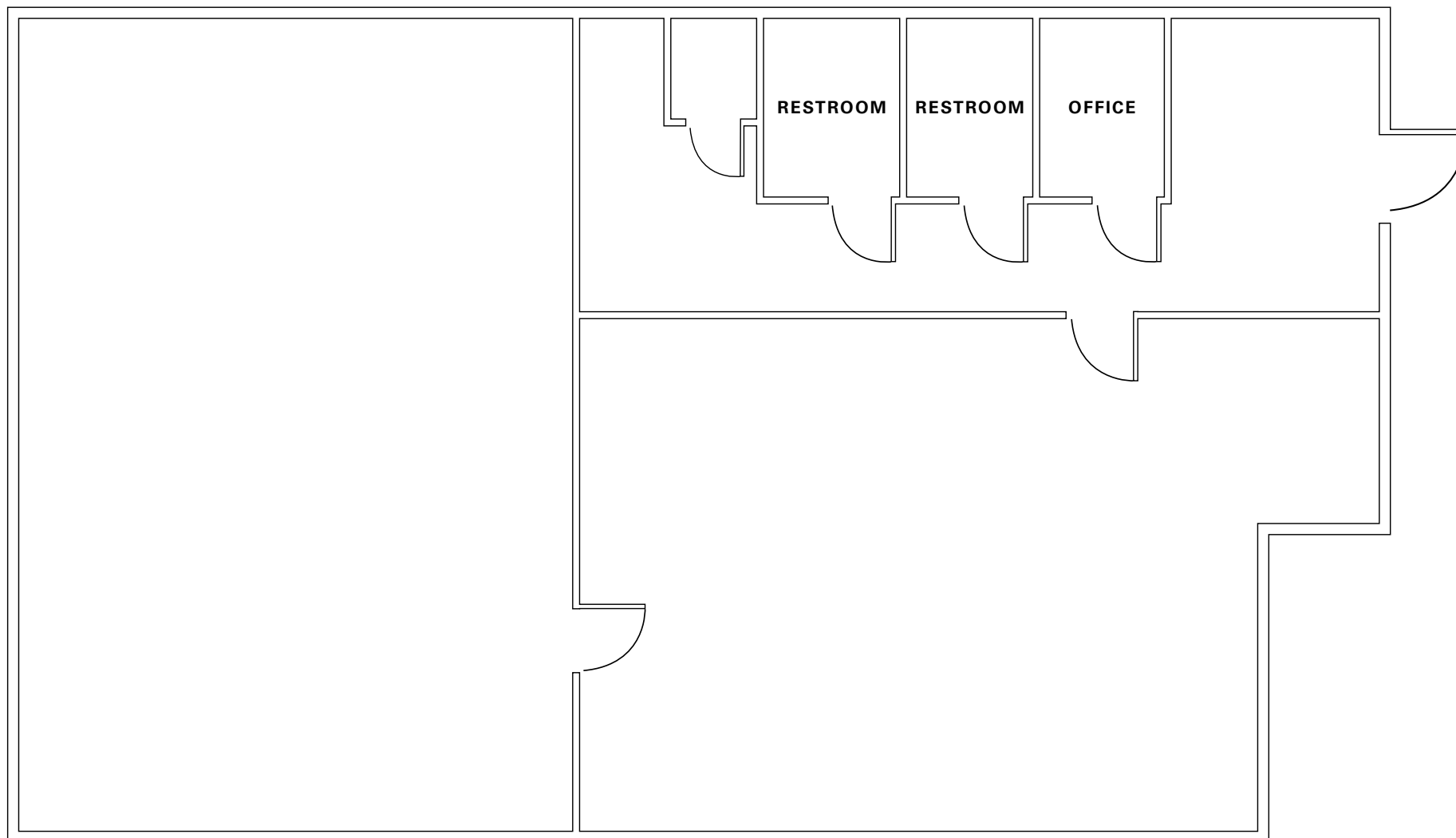
Source: Kalibrate TrafficMetrix 2025

# VILLAGE WALK SHOPPING CENTER

FRESNO, CA

# FLOOR

PLAN



SUITE 104 | 3,100± SF

# VILLAGE WALK SHOPPING CENTER

FRESNO, CA

# PROPERTY

PHOTOS



# VILLAGE WALK SHOPPING CENTER

FRESNO, CA

# RETAIL

MAP



SMALL OFFICE SPACES

17,087±  
ADT

VILLAGE WALK  
SHOPPING CENTER

39,441±  
ADT

**SITE**

# VILLAGE WALK SHOPPING CENTER

FRESNO, CA

AERIAL  
MAP



AVAILABLE FOR LEASE  
6370 N. FIGARDEN DRIVE | SUITE 104

# VILLAGE WALK SHOPPING CENTER

FRESNO, CA

For information, please contact:

**Shane Sousa**

Sales Associate

t 559-447-6221

shane@retailcalifornia.com

CA RE Lic. #02152527

**Nick Frechou**

Senior Vice President

t 559-447-6266

nick@retailcalifornia.com

CA RE Lic. #01887999

*Independently Owned and Operated*

Corporate License #00020875

[retailcalifornia.com](http://retailcalifornia.com)

**FRESNO OFFICE**

7480 N. Palm Ave. #101

Fresno, CA 93711

t 559-432-6200

The distributor of this communication is performing acts for which a real estate license is required. The information contained herein has been obtained from sources deemed reliable but has not been verified and no guarantee, warranty or representation, either express or implied, is made with respect to such information. Terms of sale or lease and availability are subject to change or withdrawal without notice.