

lincoln park office

AVAILABLE FOR LEASE | 1,400 RSF



NORTH CLARK



LEAD LEASING ADVISOR

DAVE SCHRAUFNAGEL

Senior Director

C +1 773 430 6406

Dave@Greenstone-Partners.com

2732 N. CLARK STREET, CHICAGO, IL

Suites	200	1,400 RSF	\$23.00 / RSF, MG
--------	-----	-----------	-------------------



GREENSTONE
PARTNERS

Location

Chicago - Lincoln Park



**LINCOLN PARK'S
BUSIEST INTERSECTION
(CLARK / BROADWAY /
DIVERSEY)**



**GORGEOUS
GREYSTONE
COMMERCIAL
BUILDING**



**IDEAL FOR OFFICE,
MEDICAL, FITNESS,
WELLNESS, EDUCATION,
RELIGIOUS**



**PRIVATE OFFICE
& PRIVATE
RESTROOM**



**DEDICATED
ON-SITE PARKING
AVAILABLE**



**NEXT TO STARBUCKS,
WALGREENS, TRADER
JOE'S & STAN'S
DONUTS**



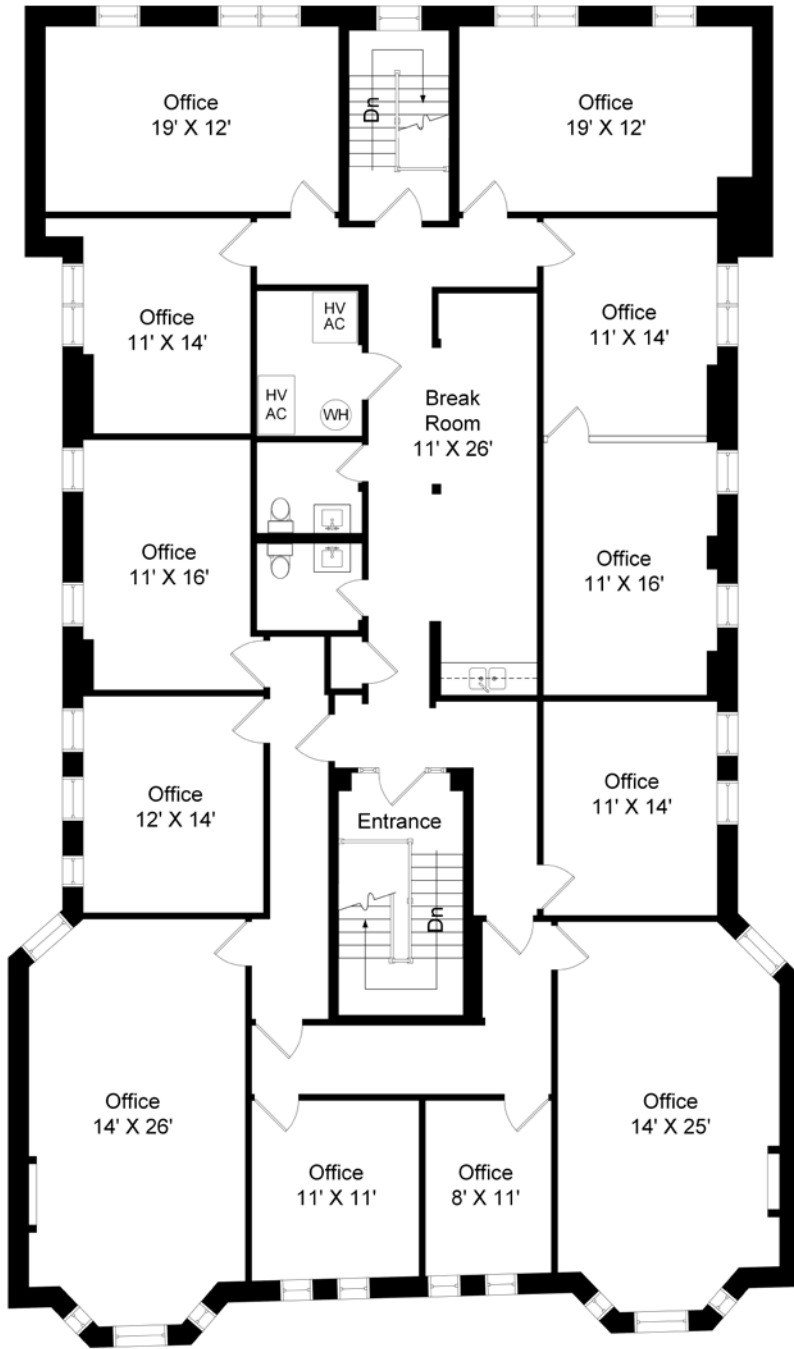
**.4 MILES TO
DIVERSEY EL
STATION**



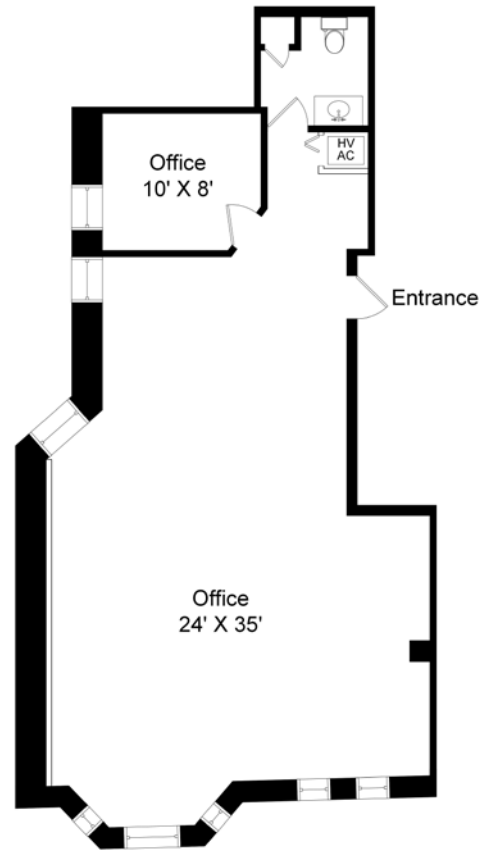
**MOVE-IN READY,
AVAILABLE
IMMEDIATELY**



FLOOR PLANS



3RD LEVEL



2ND LEVEL



NORTH CLARK



LEAD LEASING ADVISOR

DAVE SCHRAUFNAGEL

Senior Director

C +1 773 430 6406

Dave@Greenstone-Partners.com



**GREENSTONE
PARTNERS**

© Copyright 2026 Greenstone Partners. Information herein has been obtained from sources believed reliable. While we do not doubt its accuracy, we have not verified it and make no guarantee, warranty or representation about it. It is your responsibility to independently confirm its accuracy and completeness. Any projections, opinions, assumptions or estimates used are for example only and do not represent the current or future performance of the market. This information is designed exclusively for use by Greenstone Partners' clients, and cannot be reproduced without prior written permission of Greenstone Partners.