

Strawberry / Vegetable Row Crop Land 206+ Acres For Sale



206.3 Acres of Row Crop Farmland For Sale Prime Agricultural Zone – Camarillo/Oxnard Plain, Ventura County, CA

- Strategically Located - SEC of Santa Clara Ave. & Wright Rd.
- Strawberry Ready - Currently leased for Vegetables
- Fully Tiled & Laser-Leveled - Ideal Climate & Growing Conditions - *Historically leased for Berries 2007-2017*
- Water Sources: 3 Private Wells (2 Active, 1 Dormant)
- Farm Lease w/ Excellent Tenant / 6 mo Termination Clause
- Zoned AE 40 Acre Minimum & Subject to VC SOAR
- Unincorporated area of Ventura County
- APN 147-0-050-375 – Barn & Renovated 1,200 sq ft Home

Offered at \$12,995,000.

Lynn Osslund 805.469.2053 & Jill Bailey 805.340.0015
Lic #00305498



JACOBSON REALTY, INC.

445 Rosewood Avenue, Suite J Camarillo, CA 93010

805.389.4747 phone 805.389.4744 fax

Email: jacobsonrealtyinc@gmail.com Web Address: www.jrealty.com



**206+ Acres – Strawberry Ready / Currently leased for Vegetables on the Oxnard Plain
Camarillo, CA**

The information above has been obtained from sources believed to be reliable. While we do not doubt its accuracy, we have not verified it and make no guarantee, warranty or representation about it. It is your responsibility to independently confirm its accuracy and completeness. Any projections, opinions, assumptions or estimates used are for example only and do not represent the current or future performance of the property. The value of this transaction to you depends on tax and other factors which should be evaluated by your tax, financial and legal advisors. You and your advisors should conduct a careful, independent investigation of the property to determine to your satisfaction the suitability of the property for your needs.



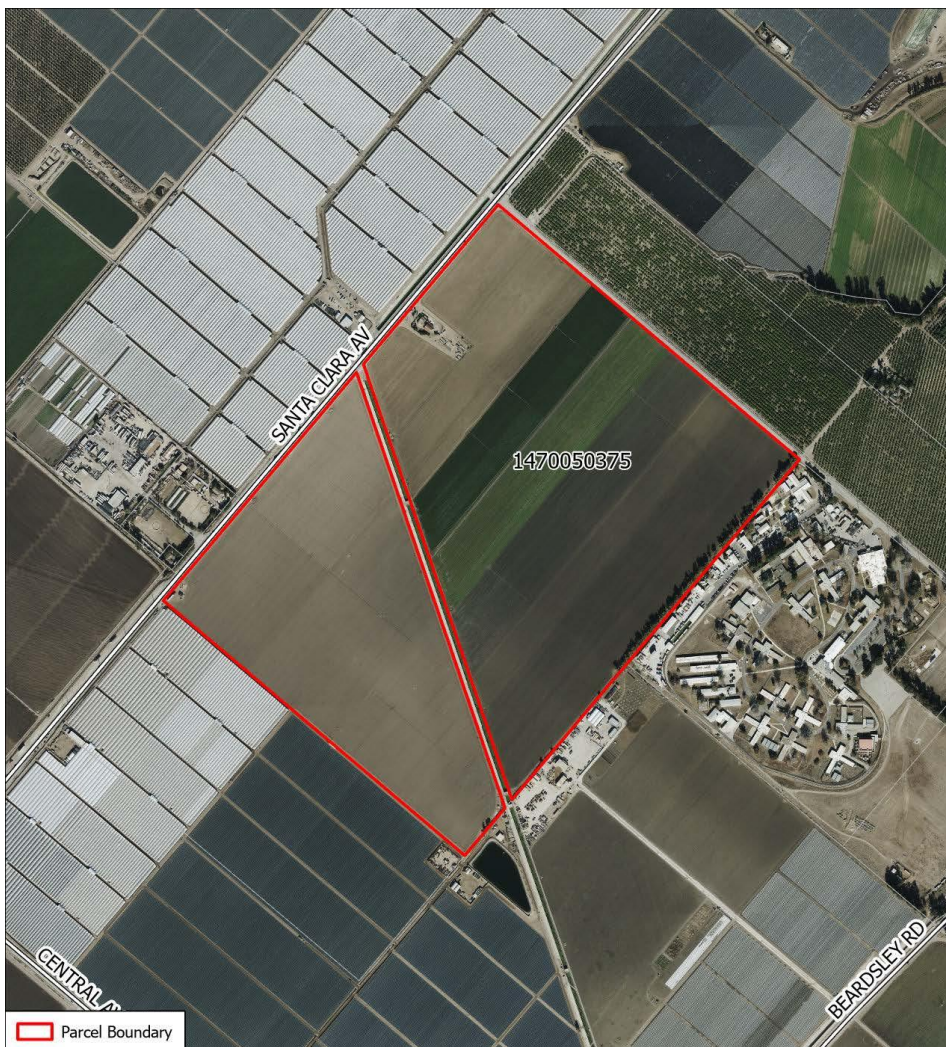
**206+ Acres – Strawberry Ready / Currently leased for Vegetables on the Oxnard Plain
Camarillo, CA**

The information above has been obtained from sources believed to be reliable. While we do not doubt its accuracy, we have not verified it and make no guarantee, warranty or representation about it. It is your responsibility to independently confirm its accuracy and completeness. Any projections, opinions, assumptions or estimates used are for example only and do not represent the current or future performance of the property. The value of this transaction to you depends on tax and other factors which should be evaluated by your tax, financial and legal advisors. You and your advisors should conduct a careful, independent investigation of the property to determine to your satisfaction the suitability of the property for your needs.



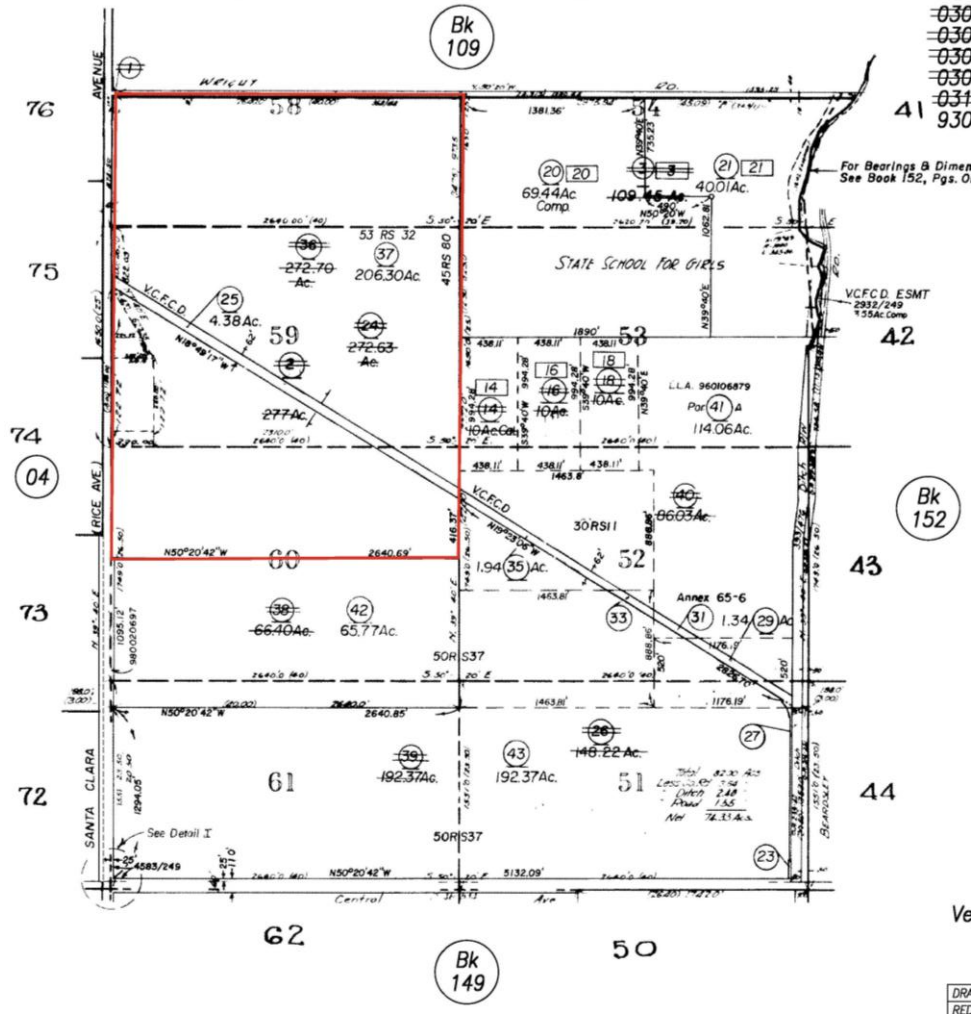
206+ Acres of Strawberry / Vegetable Farmland on the Oxnard Plain - Camarillo, CA

The information above has been obtained from sources believed to be reliable. While we do not doubt its accuracy, we have not verified it and make no guarantee, warranty or representation about it. It is your responsibility to independently confirm its accuracy and completeness. Any projections, opinions, assumptions or estimates used are for example only and do not represent the current or future performance of the property. The value of this transaction to you depends on tax and other factors which should be evaluated by your tax, financial and legal advisors. You and your advisors should conduct a careful, independent investigation of the property to determine to your satisfaction the suitability of the property for your needs.



206+ Acres – Strawberry Ready / Currently leased for Vegetables on the Oxnard Plain Camarillo, CA

The information above has been obtained from sources believed to be reliable. While we do not doubt its accuracy, we have not verified it and make no guarantee, warranty or representation about it. It is your responsibility to independently confirm its accuracy and completeness. Any projections, opinions, assumptions or estimates used are for example only and do not represent the current or future performance of the property. The value of this transaction to you depends on tax and other factors which should be evaluated by your tax, financial and legal advisors. You and your advisors should conduct a careful, independent investigation of the property to determine to your satisfaction the suitability of the property for your needs.

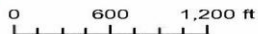
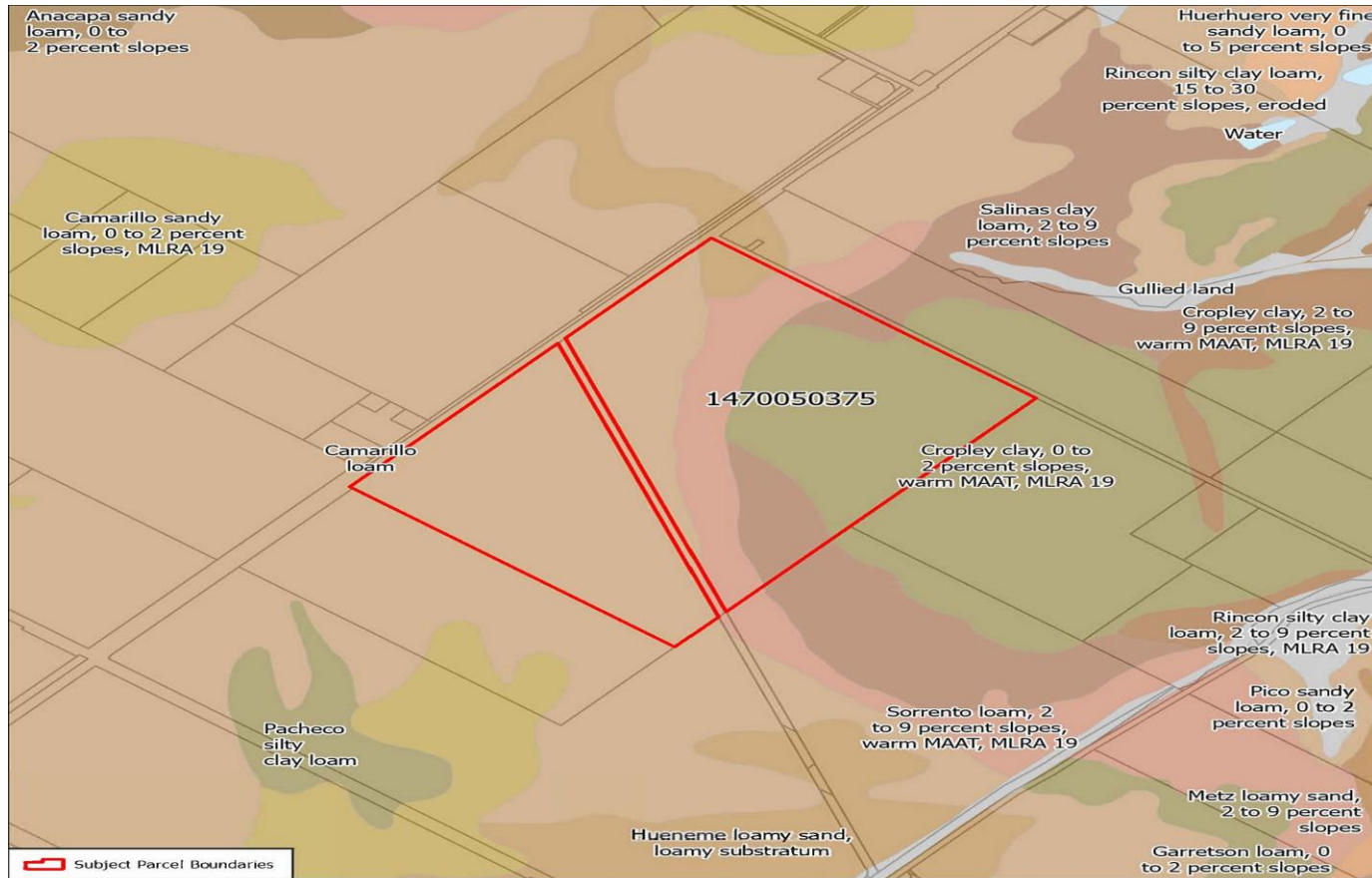


206+ Acres – Strawberry Ready / Currently leased for Vegetables on the Oxnard Plain Camarillo, CA

The information above has been obtained from sources believed to be reliable. While we do not doubt its accuracy, we have not verified it and make no guarantee, warranty or representation about it. It is your responsibility to independently confirm its accuracy and completeness. Any projections, opinions, assumptions or estimates used are for example only and do not represent the current or future performance of the property. The value of this transaction to you depends on tax and other factors which should be evaluated by your tax, financial and legal advisors. You and your advisors should conduct a careful, independent investigation of the property to determine to your satisfaction the suitability of the property for your needs.

Agricultural-Commercial-Residential

Lic. #00305498



Soil Types
APN 147-0-050-375

Prepared by County of Ventura - Information Systems Department - GIS Division
State Plane Coordinate System California Zone V - NAD 83
This map was compiled from records and computations
Published on: June 18, 2025

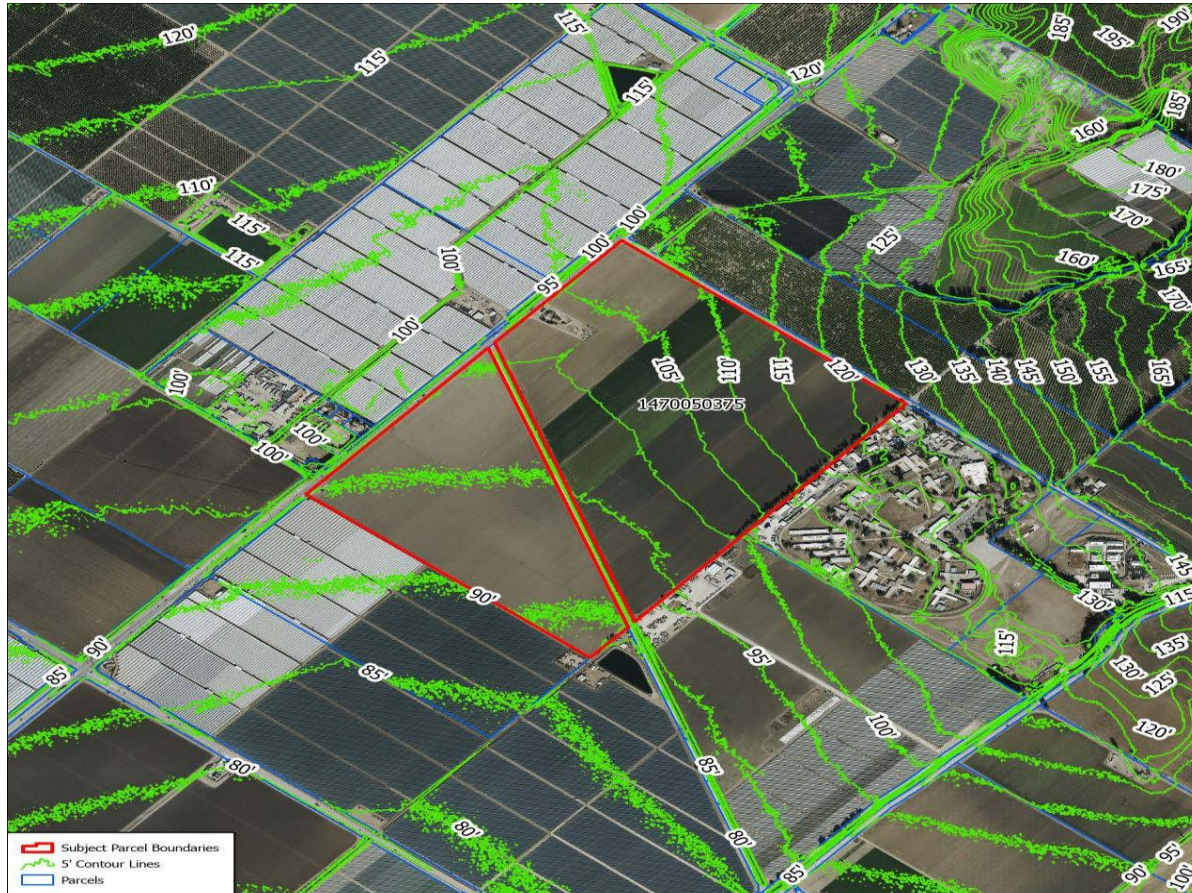


Copyright 2025 County of Ventura. Design, maps, index and text of this map are copyrighted. It is unlawful to copy or reproduce, either in digital or paper form, any part thereof for personal use or resale.

WARNING: The information contained herein was created by the Ventura County Geographic Information System (GIS), which is designed and operated solely for the convenience of the County and related contract entities. The County does not warrant the accuracy of this information, and no decision involving a risk of economic loss or physical injury should be made in reliance thereon.

**206+ Acres – Strawberry Ready / Currently leased for Vegetables on the Oxnard Plain
Camarillo, CA**

The information above has been obtained from sources believed to be reliable. While we do not doubt its accuracy, we have not verified it and make no guarantee, warranty or representation about it. It is your responsibility to independently confirm its accuracy and completeness. Any projections, opinions, assumptions or estimates used are for example only and do not represent the current or future performance of the property. The value of this transaction to you depends on tax and other factors which should be evaluated by your tax, financial and legal advisors. You and your advisors should conduct a careful, independent investigation of the property to determine to your satisfaction the suitability of the property for your needs.



5' Contour Lines
APN 147-0-050-375

Prepared by County of Ventura - Information Systems Department - GIS Division
State Plane Coordinate System California Zone V - NAD 83
This map was compiled from records and computations
Published on: June 18, 2025

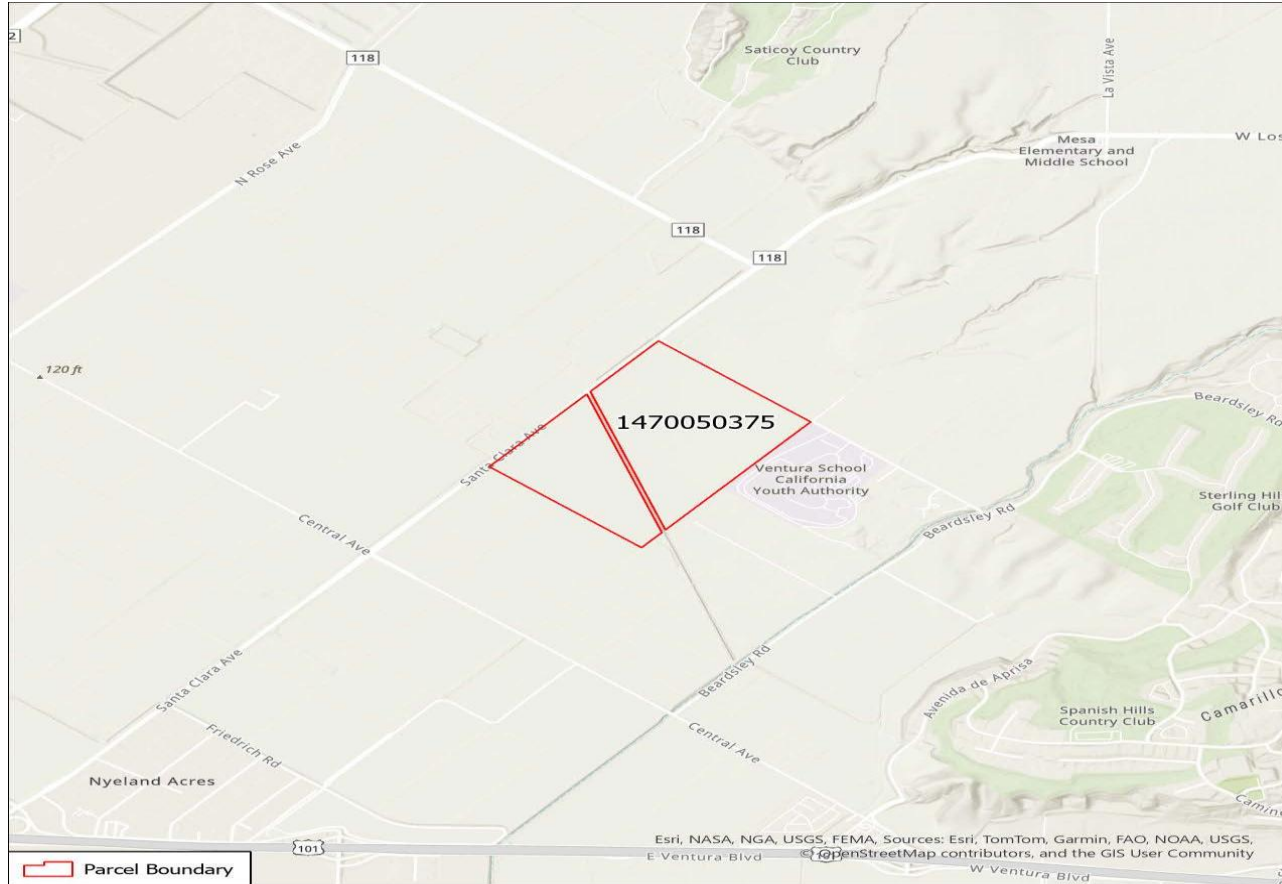


Copyright 2025 County of Ventura. Design, maps, index and text of this map are copyrighted. It is unlawful to copy or reproduce, either in digital or paper form, any part thereof for personal use or resale.

WARNING: The information contained hereon was created by the Ventura County Geographic Information System (GIS), which is designed and operated solely for the convenience of the County and related contract entities. The County does not warrant the accuracy of this information, and no decision involving a risk of economic loss or physical injury should be made in reliance thereon.

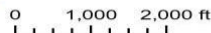
**206+ Acres – Strawberry Ready / Currently leased for Vegetables on the Oxnard Plain
Camarillo, CA**

The information above has been obtained from sources believed to be reliable. While we do not doubt its accuracy, we have not verified it and make no guarantee, warranty or representation about it. It is your responsibility to independently confirm its accuracy and completeness. Any projections, opinions, assumptions or estimates used are for example only and do not represent the current or future performance of the property. The value of this transaction to you depends on tax and other factors which should be evaluated by your tax, financial and legal advisors. You and your advisors should conduct a careful, independent investigation of the property to determine to your satisfaction the suitability of the property for your needs.



USGS Topography
APN 147-0-050-375

Prepared by County of Ventura - Information Systems Department - GIS Division
 State Plane Coordinate System California Zone V - NAD 83
 This map was compiled from records and computations.
 Published on: June 18, 2025

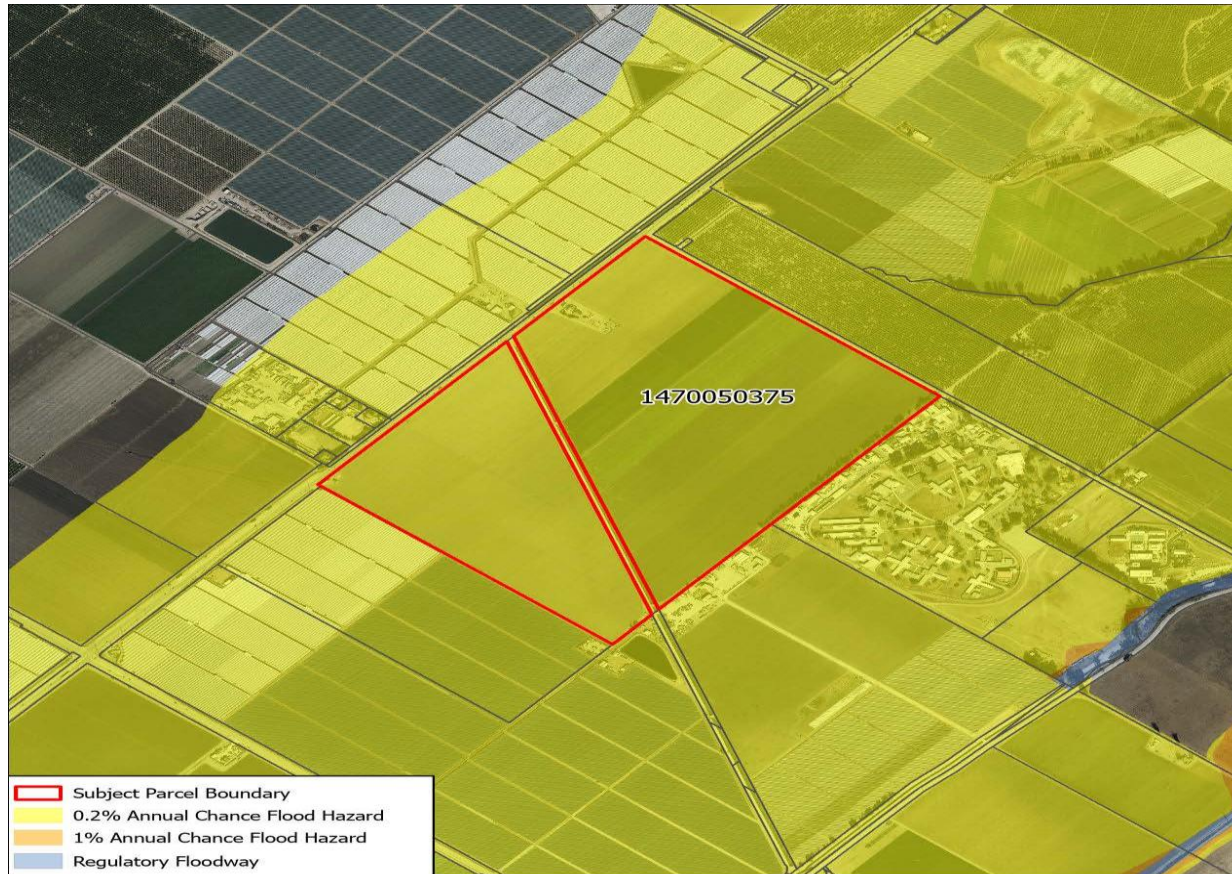


Copyright 2025 County of Ventura. Design, maps, index and text of this map are copyrighted. It is unlawful to copy or reproduce, either in digital or paper form, any part thereof for personal use or resale.

WARNING: The information contained herein was created by the Ventura County Geographic Information System (GIS), which is designed and operated solely for the convenience of the County and related contract entities. The County does not warrant the accuracy of this information, and no decision involving a risk of economic loss or physical injury should be made in reliance thereon.

**206+ Acres – Strawberry Ready / Currently leased for Vegetables on the Oxnard Plain
 Camarillo, CA**

The information above has been obtained from sources believed to be reliable. While we do not doubt its accuracy, we have not verified it and make no guarantee, warranty or representation about it. It is your responsibility to independently confirm its accuracy and completeness. Any projections, opinions, assumptions or estimates used are for example only and do not represent the current or future performance of the property. The value of this transaction to you depends on tax and other factors which should be evaluated by your tax, financial and legal advisors. You and your advisors should conduct a careful, independent investigation of the property to determine to your satisfaction the suitability of the property for your needs.



Flood Hazard Areas APN 147-0-050-375

Prepared by County of Ventura - Information Systems Department - GIS Division
State Plane Coordinate System California Zone V - NAD 83
This map was compiled from records and computations
Published on: June 18, 2025

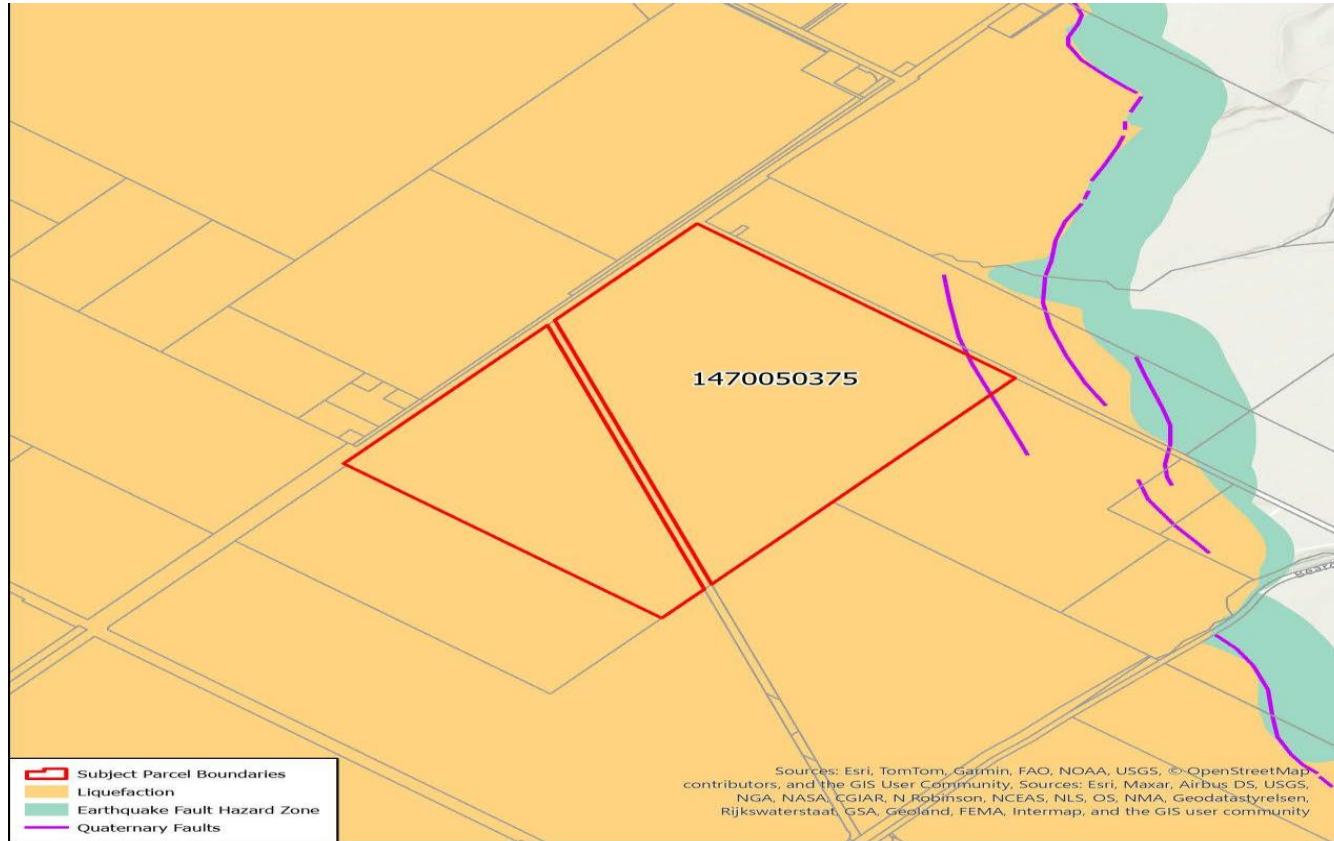


Copyright 2025 County of Ventura. Design, layout, index and text of this map are copyrighted. It is unlawful to copy or reproduce, either in digital or paper form, any part thereof for personal use or resale.

WARNING: The information contained herein was created by the Ventura County Geographic Information System (GIS), which is designed and operated solely for the convenience of the County and related contract entities. The County does not warrant the accuracy of this information, and no decision involving a risk of economic loss or physical injury should be made in reliance thereon.

206+ Acres – Strawberry Ready / Currently leased for Vegetables on the Oxnard Plain Camarillo, CA

The information above has been obtained from sources believed to be reliable. While we do not doubt its accuracy, we have not verified it and make no guarantee, warranty or representation about it. It is your responsibility to independently confirm its accuracy and completeness. Any projections, opinions, assumptions or estimates used are for example only and do not represent the current or future performance of the property. The value of this transaction to you depends on tax and other factors which should be evaluated by your tax, financial and legal advisors. You and your advisors should conduct a careful, independent investigation of the property to determine to your satisfaction the suitability of the property for your needs.



0 600 1,200 ft

Copyright 2025 County of Ventura. Design, maps, index and text of this map are copyrighted. It is unlawful to copy or reproduce, either in digital or paper form, any part thereof for personal use or resale.

Hazards

APN 147-0-050-375

Prepared by County of Ventura - Information Systems Department - GIS Division
State Plane Coordinate System California Zone V - NAD 83
This map was compiled from records and computations
Published on: June 18, 2025



WARNING: The information contained herein was created by the Ventura County Geographic Information System (GIS), which is designed and operated solely for the convenience of the County and related contract entities. The County does not warrant the accuracy of this information, and no decision involving a risk of economic loss or physical injury should be made in reliance thereon.

206+ Acres – Strawberry Ready / Currently leased for Vegetables on the Oxnard Plain Camarillo, CA

The information above has been obtained from sources believed to be reliable. While we do not doubt its accuracy, we have not verified it and make no guarantee, warranty or representation about it. It is your responsibility to independently confirm its accuracy and completeness. Any projections, opinions, assumptions or estimates used are for example only and do not represent the current or future performance of the property. The value of this transaction to you depends on tax and other factors which should be evaluated by your tax, financial and legal advisors. You and your advisors should conduct a careful, independent investigation of the property to determine to your satisfaction the suitability of the property for your needs.



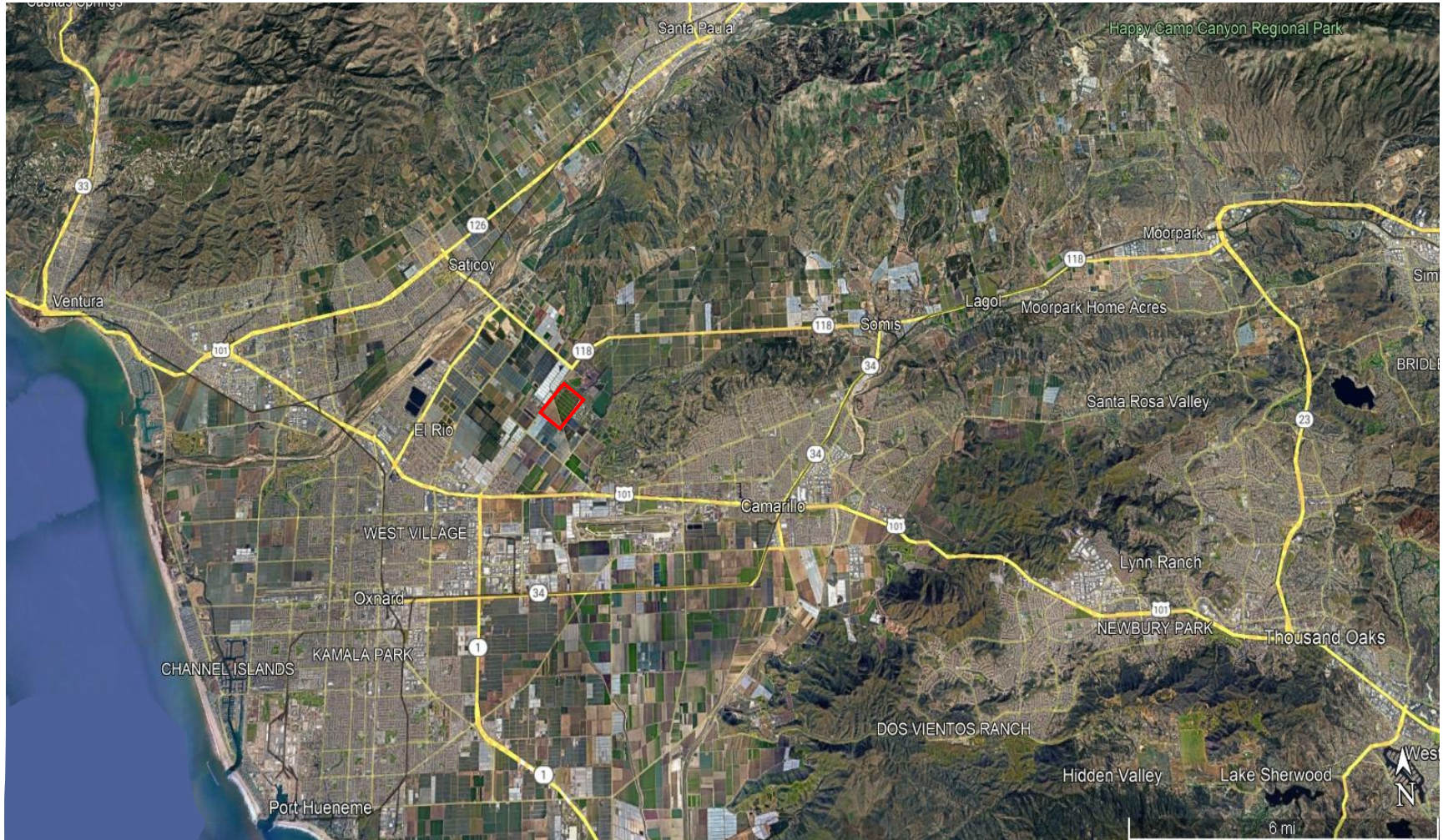
**206+ Acres – Strawberry Ready / Currently leased for Vegetables on the Oxnard Plain
Camarillo, CA**

The information above has been obtained from sources believed to be reliable. While we do not doubt its accuracy, we have not verified it and make no guarantee, warranty or representation about it. It is your responsibility to independently confirm its accuracy and completeness. Any projections, opinions, assumptions or estimates used are for example only and do not represent the current or future performance of the property. The value of this transaction to you depends on tax and other factors which should be evaluated by your tax, financial and legal advisors. You and your advisors should conduct a careful, independent investigation of the property to determine to your satisfaction the suitability of the property for your needs.



206+ Acres – Strawberry Ready / Currently leased for Vegetables on the Oxnard Plain Camarillo, CA

The information above has been obtained from sources believed to be reliable. While we do not doubt its accuracy, we have not verified it and make no guarantee, warranty or representation about it. It is your responsibility to independently confirm its accuracy and completeness. Any projections, opinions, assumptions or estimates used are for example only and do not represent the current or future performance of the property. The value of this transaction to you depends on tax and other factors which should be evaluated by your tax, financial and legal advisors. You and your advisors should conduct a careful, independent investigation of the property to determine to your satisfaction the suitability of the property for your needs.



**206+ Acres – Strawberry Ready / Currently leased for Vegetables on the Oxnard Plain
Camarillo, CA**

The information above has been obtained from sources believed to be reliable. While we do not doubt its accuracy, we have not verified it and make no guarantee, warranty or representation about it. It is your responsibility to independently confirm its accuracy and completeness. Any projections, opinions, assumptions or estimates used are for example only and do not represent the current or future performance of the property. The value of this transaction to you depends on tax and other factors which should be evaluated by your tax, financial and legal advisors. You and your advisors should conduct a careful, independent investigation of the property to determine to your satisfaction the suitability of the property for your needs.