

MEDICAL OFFICE SUITES FOR LEASE



# CARY MEDICAL PAVILION

ATLAS  STARK

PHOTO SOURCE: COSTAR

# PROPERTY SUMMARY

**Location:**

101-105 SW Cary Parkway, Cary, NC 27511

**Occupancy:**

49.30%

**Building Size:**

±65,906

**Lot Size:**

5.43 Acres

**Levels:**

Three Stories Per Building

**Tax Parcel:**

0763309547 & 0099051

**County:**

Wake County

**Year Built:**

1986 (101) | 1999 (105) | 2020 Renovation

**Parking: 4.41 | 1,000 SF - 261 Surface Spaces**

280 Regular Spaces | 11 Handicap Spaces

**Zoning: Town of Cary “PDD Major”**

Located in the “Cary Park” Planned Development District



# Highlights

**101-105 SW CARY PARKWAY  
CARY, NC 27511**

**BUILDING: 101**

**105**

<b>SUITE</b>	101	30	202	300
<b>AVAILABILITY</b>	18,022 SF	2,787 SF	5,719 SF	6,908 SF
<b>RENTAL RATE</b>	\$24.00/SF NNN	\$24.00/SF NNN	\$24.00/SF NNN	\$24.00/SF NNN
<b>TICAM (estimate)</b>	\$9.50/SF	\$9.50/SF	\$9.50/SF	\$9.50/SF

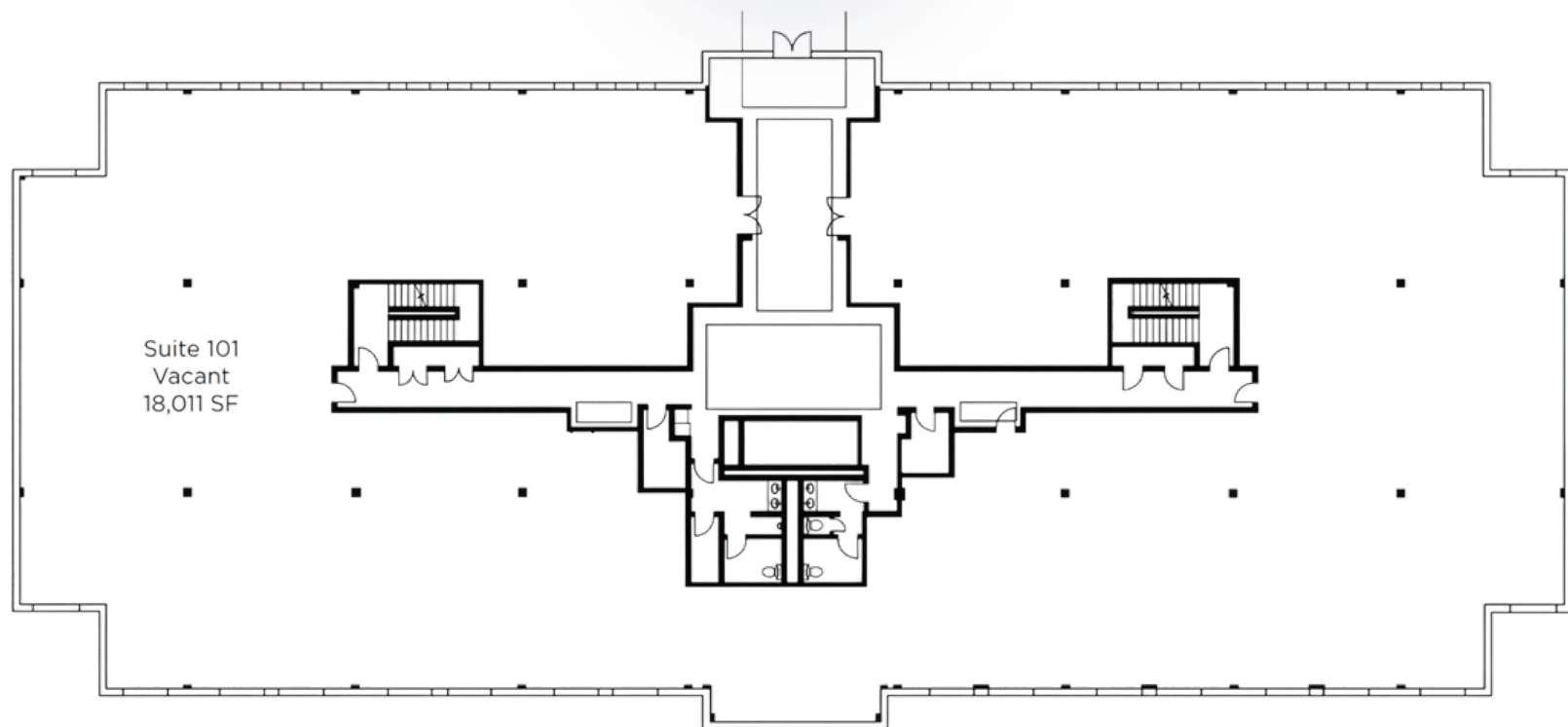


Building 101

# BUILDING 101 - SUITE 101

101 SW CARY PARKWAY CARY NC 27611

SUITE 101  
AVAILABLE  
18,011 SF



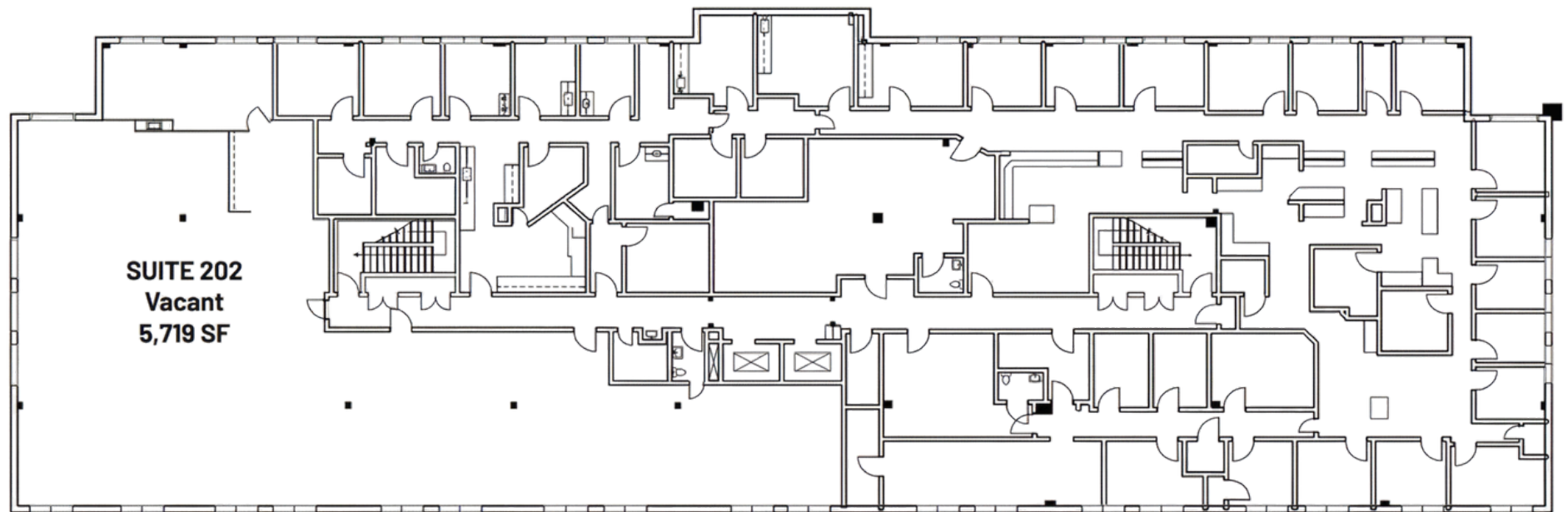
[Click for a virtual tour.](#)

# BUILDING 101 - SUITE 202

101 SW CARY PARKWAY CARY NC 27611



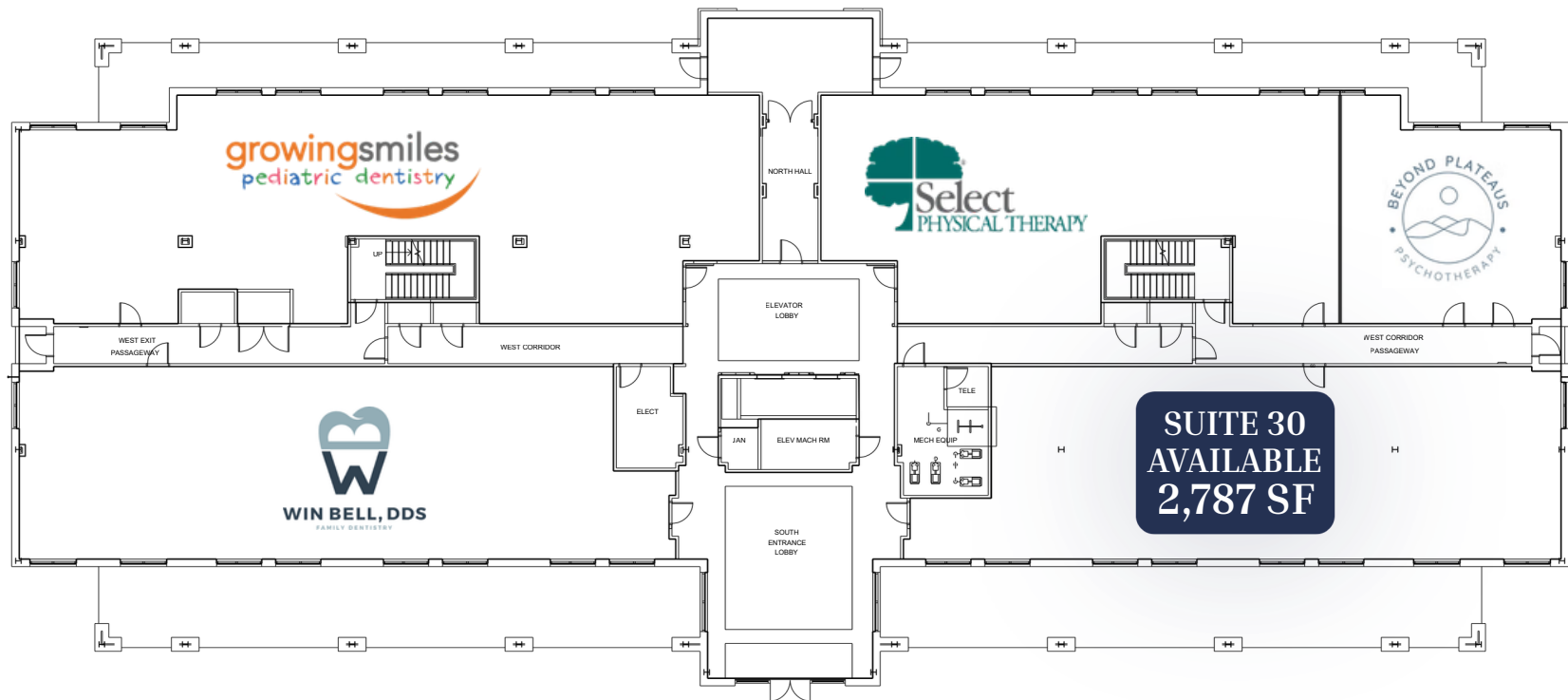
CARY DERMATOLOGY CENTER  
& CARY AESTHETIC CENTER



[Click for a virtual tour.](#)

# BUILDING 101 - SUITE 30

101 SW CARY PARKWAY CARY NC 27611



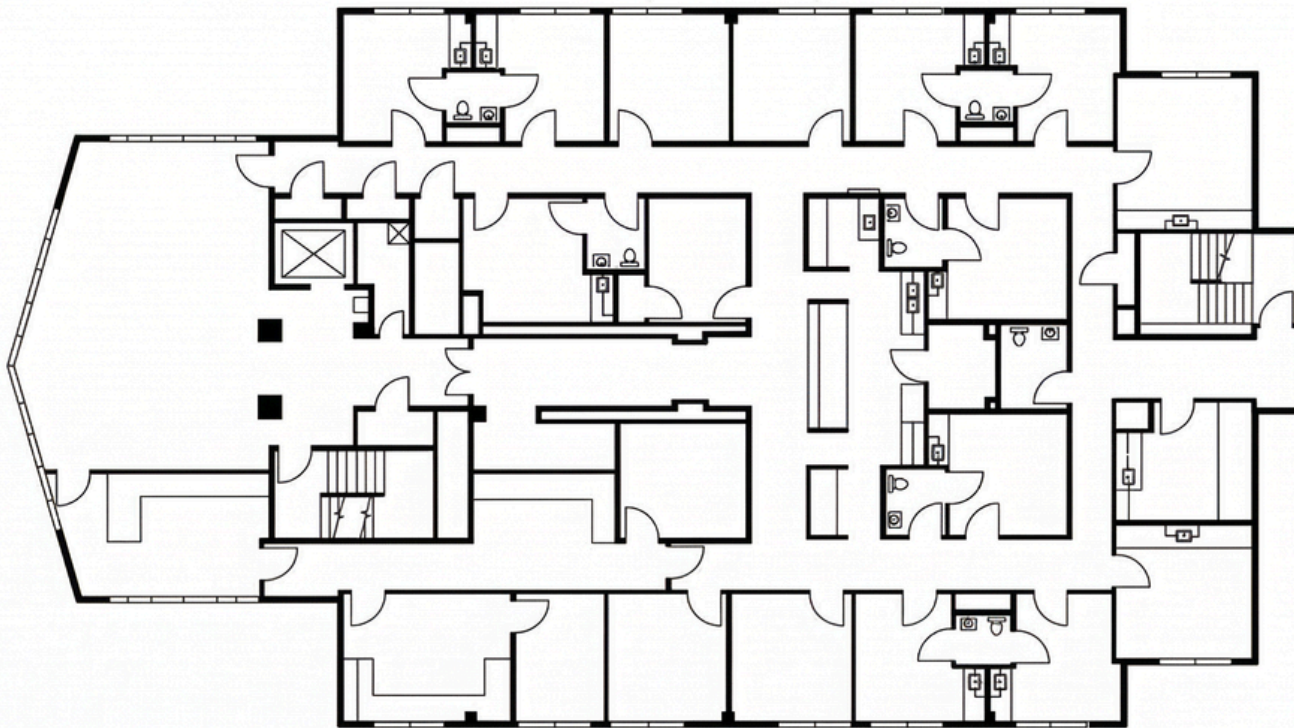
[Click for a virtual tour.](#)

# BUILDING 105 - SUITE 300

105 SW CARY PARKWAY CARY NC 27611

FOR LEASE

6,908 SF



[Click for a virtual tour.](#)

# OVERHEAD

Shoppes of Kildaire

**AVERAGE DAILY TRAFFIC**  
**27,500**

Trader Joe's

Kildaire Farm Rd

**AVERAGE DAILY TRAFFIC**  
**INTERSECTION**  
**~52,000**

Triangle Pediatrics  
NC Retina  
Cary Internal Medicine  
Avance Care  
Wake Plastic Surgery

Parks of Kildaire

SW Cary Pkwy W

WakeMed Cary Hospital  
1 MILE

**AVERAGE DAILY TRAFFIC**  
**25,000**

101

105

Village of Troon

# AREA VIEW





# CARY MEDICAL PAVILION

growingsmiles  
pediatric dentistry

CARY DERMATOLOGY CENTER

WAKE OPHTHALMOLOGY ASSOCIATES, P.A.

Select  
PHYSICAL THERAPY

WIN BELL, D.D.S

synergy |





# ATLAS STARK

Atlas Stark Holdings, LLC.

All information contained herein is from sources deemed reliable; however, no representation or warranty is made to the accuracy thereof.

## CONTACT INFO

Trent Ragland, Broker

(C)919.815.8414

[tragland@atlasstark.com](mailto:tragland@atlasstark.com)

[www.atlasstark.com](http://www.atlasstark.com)