

# CAJALCO CROSSINGS | PADS & SHOPS FOR LEASE

NEC Cajalco Expressway & Harvill Avenue, Perris, CA

## FEATURES

- Join Farmer Boys Restaurant
- Fast Food Pads & Shops Available
- 75' I-215 Freeway Pylon Signage (Approved for Future Construction)
- Cajalco Expy is a Major East/West Traffic Corridor to the I-215 Freeway
- Site to Service Strong Regional Industrial Growth

## 5 MILE PROPERTY DEMOGRAPHICS

ESTIMATED POPULATION  
**161,248**

AVERAGE HOUSEHOLD INCOME  
**\$73,709**

ADJ. DAYTIME DEMOGRAPHICS  
**30,884**

TRAFFIC COUNTS ON  
CAJALCO EXPY  
**24,815 CPD**



**LEE & ASSOCIATES**  
COMMERCIAL REAL ESTATE SERVICES

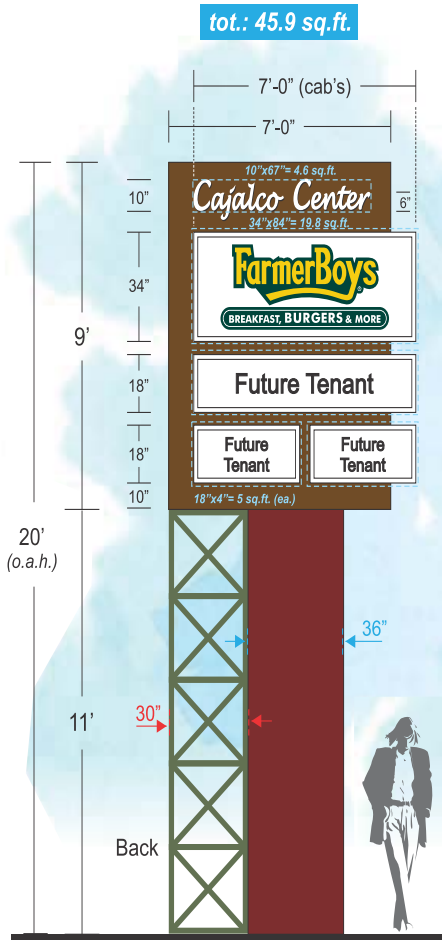
**JEFF STANLEY**  
951.276.3612 // DRE#: 01016436  
JSTANLEY@LEERIVERSIDE.COM

**SRS**  
Real Estate Partners

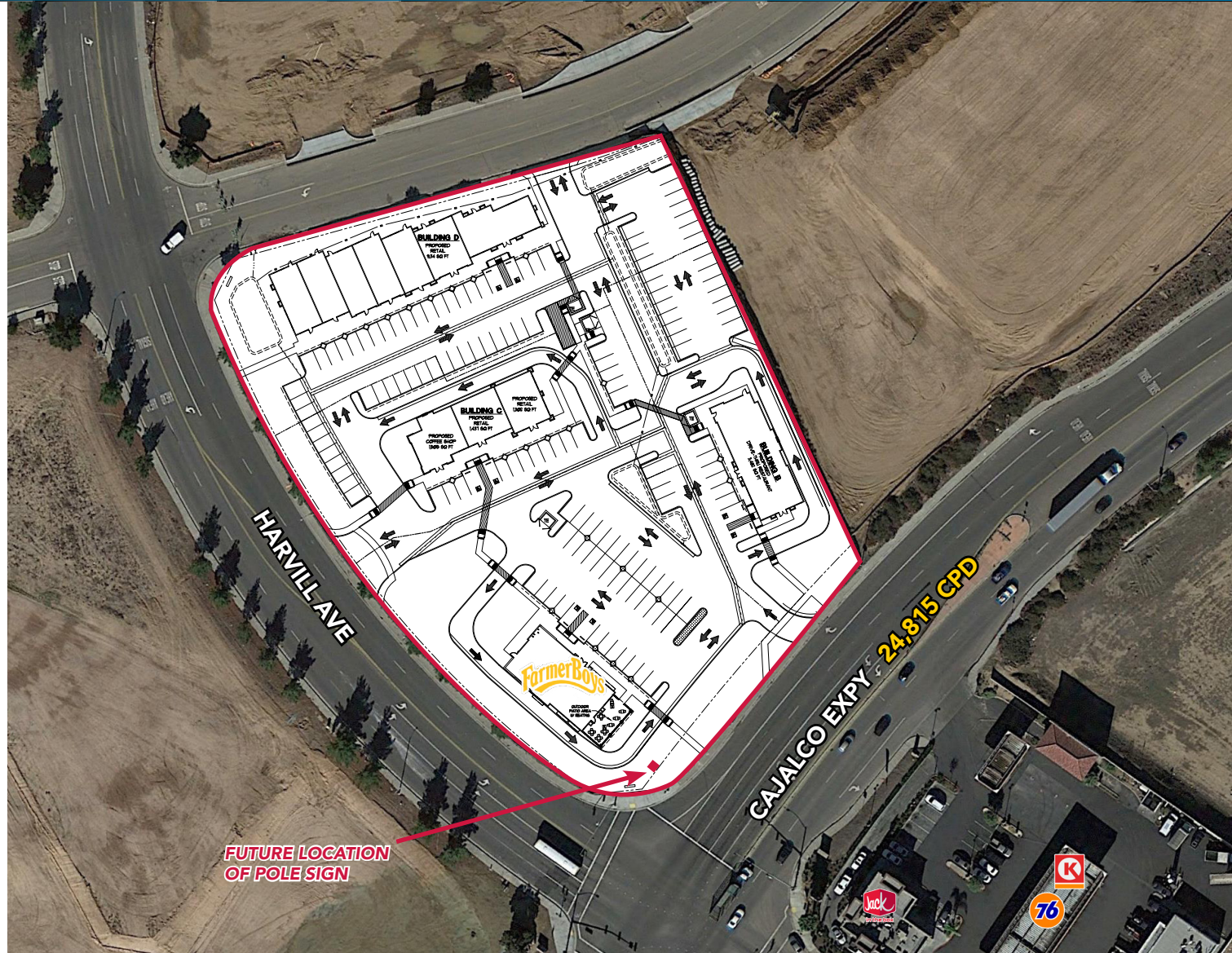
**CHRIS BEAUCHAMP**  
951.669.1005 // DRE#: 01982753  
CHRIS.BEAUCHAMP@SRSRE.COM

# CAJALCO CROSSINGS | PADS & SHOPS FOR LEASE

NEC Cajalco Expressway & Harvill Avenue, Perris, CA



**FREE STANDING CORNER POLE SIGN**



**LEE & ASSOCIATES**  
COMMERCIAL REAL ESTATE SERVICES

**JEFF STANLEY**  
951.276.3612 // DRE#: 01016436  
JSTANLEY@LEERIVERSIDE.COM

**SRS**  
Real Estate Partners

**CHRIS BEAUCHAMP**  
951.669.1005 // DRE#: 01982753  
CHRIS.BEAUCHAMP@SRSRE.COM

No warranty or representation has been made to the accuracy of the foregoing information. Terms of sale or lease and availability are subject to change or withdrawal without notice. Lee & Associates Commercial Real Estate Services, Inc. -Riverside. 3240 Mission Inn Avenue, Riverside, CA 92507 | Corporate DRE#: 01048055