



COMMERCIAL  
ASSET GROUP



# High End **Beverly Hills** Boutique Office Space(s) **For Lease**

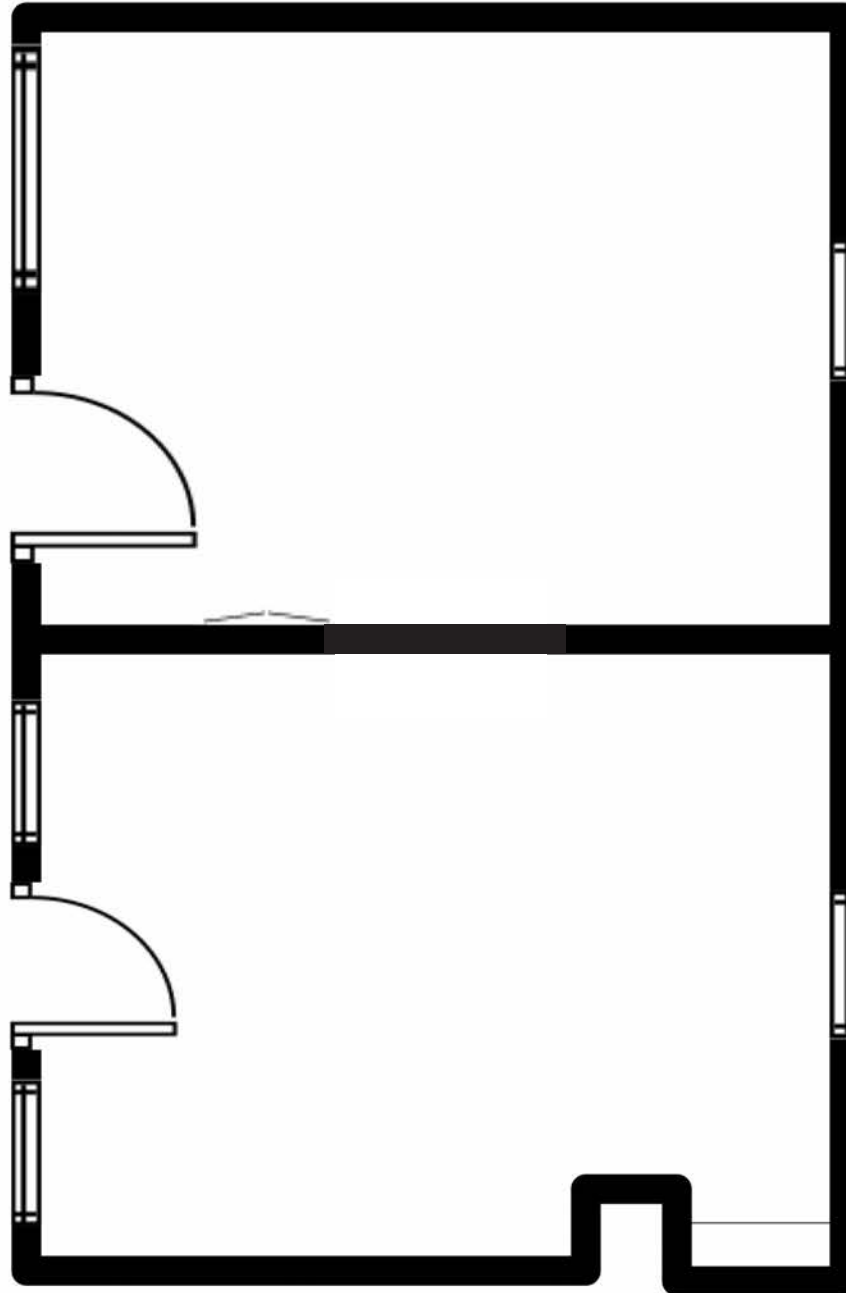
9538 Brighton Way, Beverly Hills, CA 90210



- **Rare Beverly Hills Golden Triangle boutique/private office space(s)**
- **Situated in the heart of Beverly Hills and walking distane to numerous restaurants, cafes, and other amenities**
- **Small offices on 2nd and 3rd floor**
- **3rd floor offices enjoy the center courtyard**
- **Public parking lot located directly next door**
- **Classic Beverly Hills character building maintained & updated**

SUITE	SQUARE FEET	RENTAL RATE
205	±449	\$6.00 PSF/MO, MG
304	±275	\$6.50 PSF/MO, MG
300/302	±567	\$6.50 PSF/MO, MG

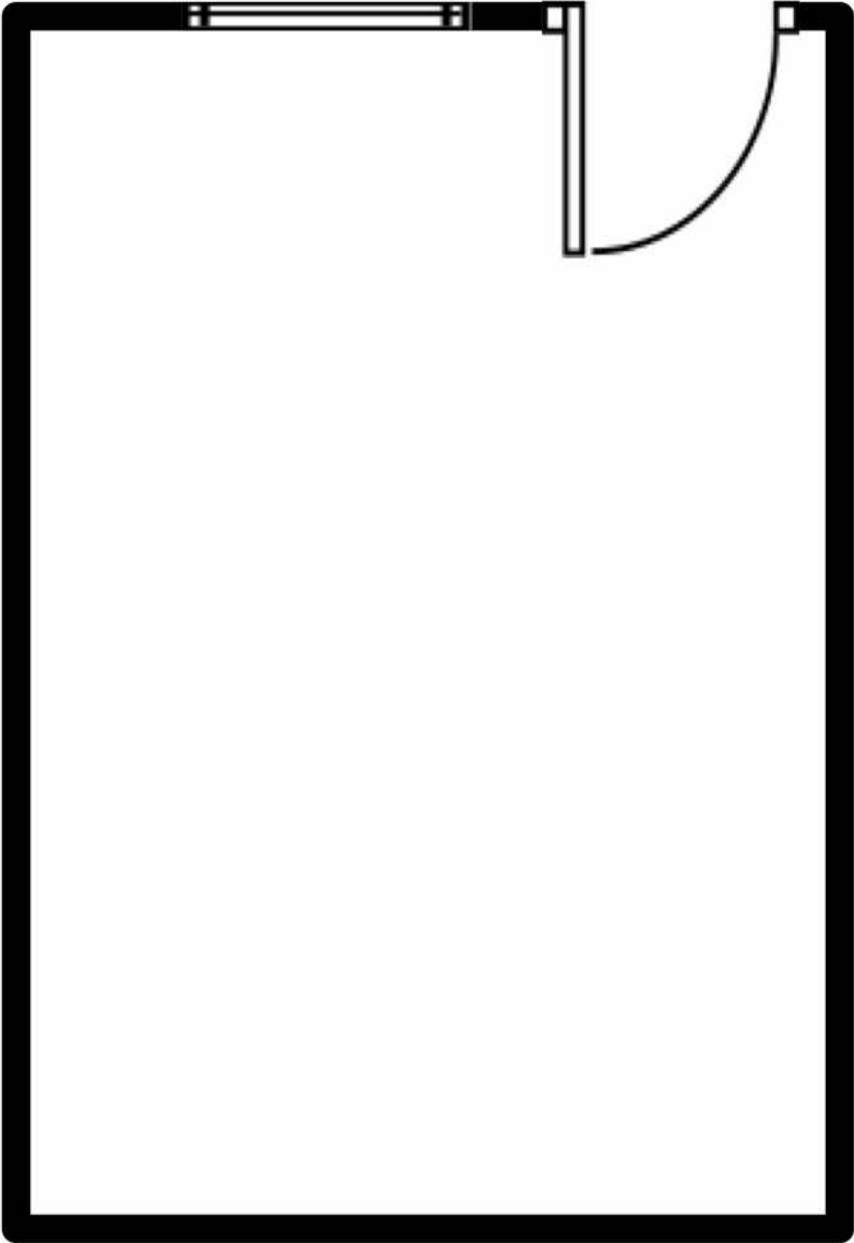
# Suite 300/302 Floor Plan



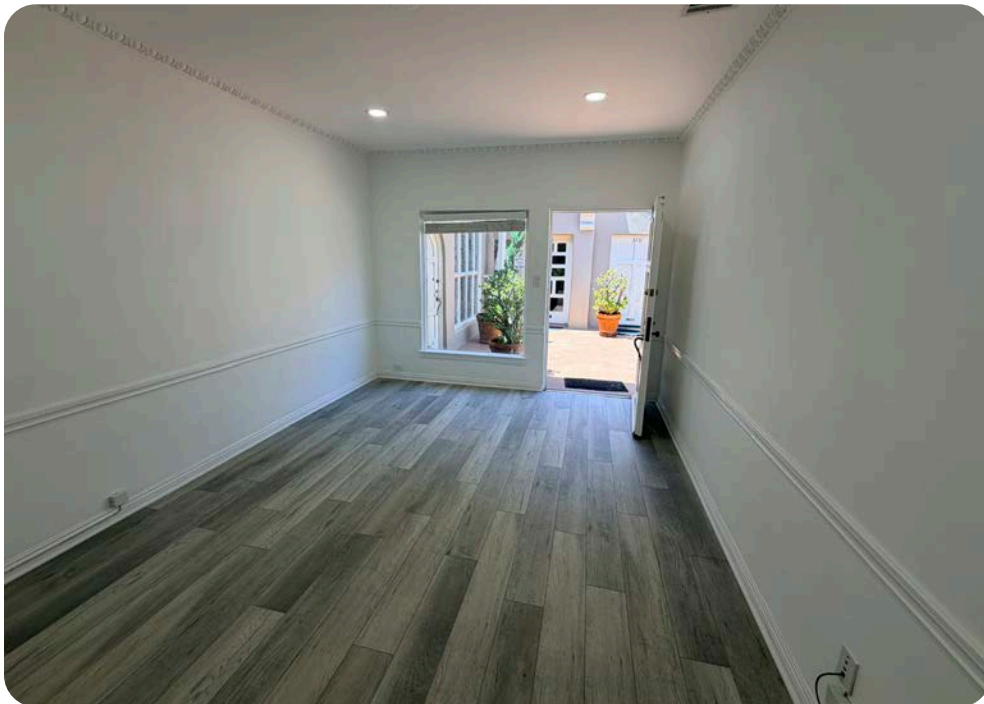
# Suite 300/302 Interior Photos



# Suite 304 Floor Plan



# Suite 304 Interior Photos



# Additional Photos

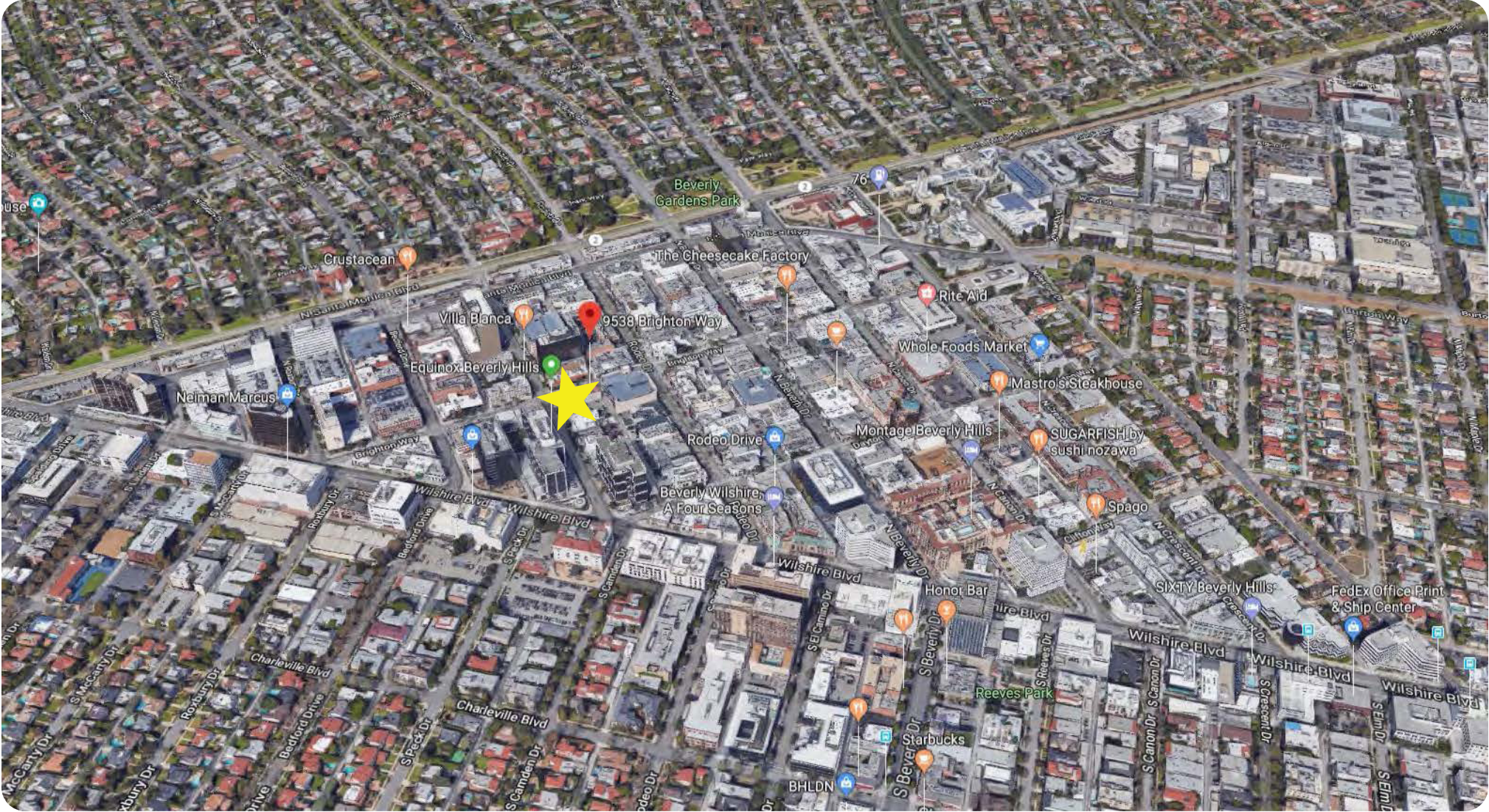


# The Neighbors

**9538 Brighton is situated steps from Rodeo Drive. Amenities for the office space include notable restaurants and eateries located steps away such as Mr. Chow, Cipriani, And Sons (in the building), Bacari, and the Brighton Coffee Shop. Building is also across from Equinox Beverly Hills.**



# Aerial





**COMMERCIAL  
ASSET GROUP**

These materials are based on information and content provided by others, which we believe are accurate. No guarantee, warranty or representation is made by Commercial Asset Group, Inc. or its personnel. All interested parties must independently verify accuracy and completeness. As well, any projections, assumptions, opinion, or estimates are used for example only and do not represent the current or future performance of the identified property. Your tax, financial, legal and toxic substance advisors should conduct a careful investigation of the property and its suitability for your needs, including land use limitations. The property is subject to prior lease, sale, change in price, or withdrawal from the market without notice.



**DAVID ICKOVICS**

PRINCIPAL  
310.272.7380  
DJI@CAGRE.COM  
LIC. 01315424

**DAVID ASCHKENASY**

EXECUTIVE VICE PRESIDENT  
310.272.7381  
DAVIDA@CAGRE.COM  
LIC. 01714442

**COMMERCIAL ASSET GROUP**

190 N. CANON DRIVE, STE 300  
BEVERLY HILLS, CA 90210  
P: 310.275.8222 F: 310.275.8223  
CAGRE.COM LIC: 01876070