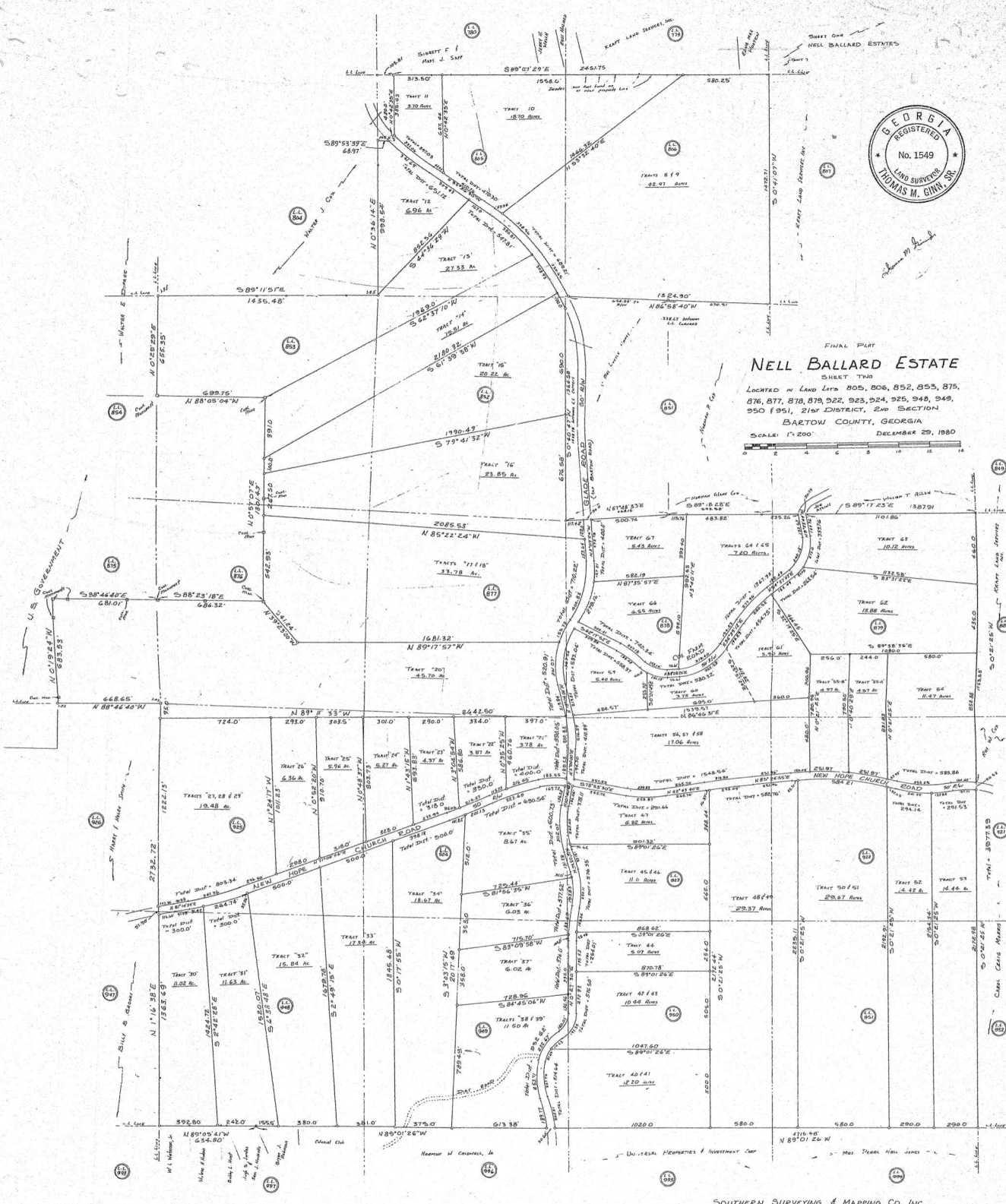




FINAL PLAN
NELL BALLARD ESTATE
 SHEET TWO
 LOCATED IN LAND LOTS 805, 806, 852, 853, 875, 876, 877, 878, 879, 922, 923, 924, 925, 948, 949, 950, 951, 21st DISTRICT, 2nd SECTION
 BARTOW COUNTY, GEORGIA
 SCALE: 1"=200' DECEMBER 29, 1980



SOUTHERN SURVEYING & MAPPING CO., INC.
 4076 EBENEZER ROAD, N.E.
 Marietta, GA 30066
 PH. 926-7759

D 642-80