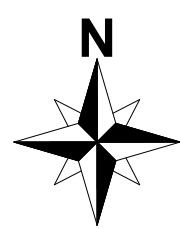


1 1a- 1st Flr
1/4" = 1'-0"

(NOT ALL SYMBOLS USED IN PROJECT)

| SYMBOL LEGEND | |
|---------------|-------------------------------|
| | EXIT SIGN |
| | EXIT SIGN W/ EMERGENCY LIGHTS |
| | EMERGENCY LIGHTS |
| | FIRE PULL |
| | SPRINKLER HEAD |
| | HORN STROBE |
| | RETURN DUCT VENT |
| | SUPPLY DUCT VENT |
| | ROUND SUPPLY VENT |
| | ELECTRICAL PANEL |
| | LIGHT SWITCH |
| | DUPLEX OUTLET |
| | QUAD OUTLET |
| | RANGE OUTLET |
| | DATA OUTLET |
| | CEILING PLUG DUPLEX |
| | CEILING PLUG QUAD |
| | FLOOR PLUG DUPLEX |
| | FIRE ALARM CONTROL PANEL |
| | FIRE EXTINGUISHER |
| | RECESSED LIGHTING |
| | CEILING LIGHT - LINEAR BOX |
| | CEILING SPEAKER |



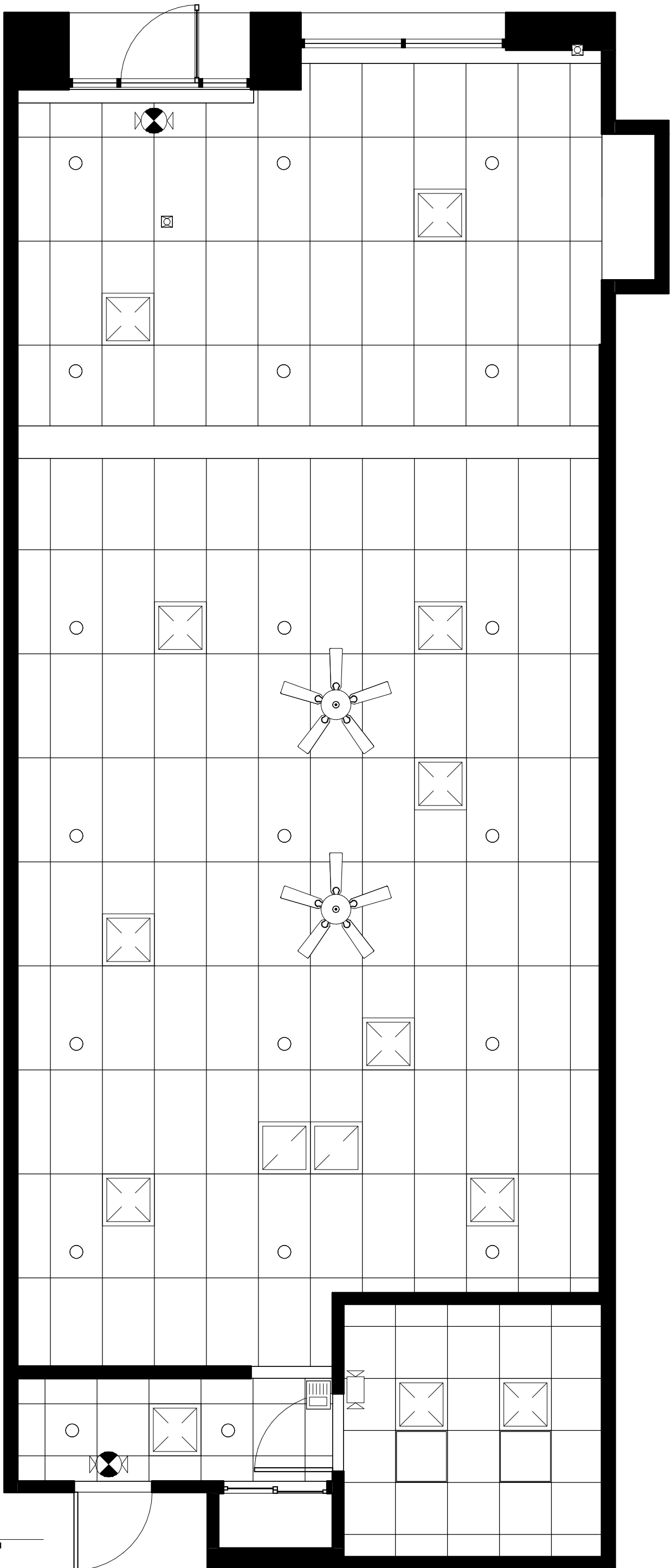
Floor Plan

Project Address
6170 Sherry Lane
Dallas, TX 75225

Project Name
As-Builts

Client Name
Rosebriar Properties

Scale
As indicated
Drawn by
J.Browns
Date
2/18/20



1 1a- 1st Flr
1/4" = 1'-0"

(NOT ALL SYMBOLS USED IN PROJECT)

| SYMBOL LEGEND | |
|---------------|-------------------------------|
| | EXIT SIGN |
| | EXIT SIGN W/ EMERGENCY LIGHTS |
| | EMERGENCY LIGHTS |
| | FIRE PULL |
| | SPRINKLER HEAD |
| | HORN STROBE |
| | RETURN DUCT VENT |
| | SUPPLY DUCT VENT |
| | ROUND SUPPLY VENT |
| | ELECTRICAL PANEL |
| | LIGHT SWITCH |
| | DUPLEX OUTLET |
| | QUAD OUTLET |
| | RANGE OUTLET |
| | DATA OUTLET |
| | CEILING PLUG DUPLEX |
| | CEILING PLUG QUAD |
| | FLOOR PLUG DUPLEX |
| | FIRE ALARM CONTROL PANEL |
| | FIRE EXTINGUISHER |
| | RECESSED LIGHTING |
| | CEILING LIGHT - LINEAR BOX |
| | CEILING SPEAKER |

