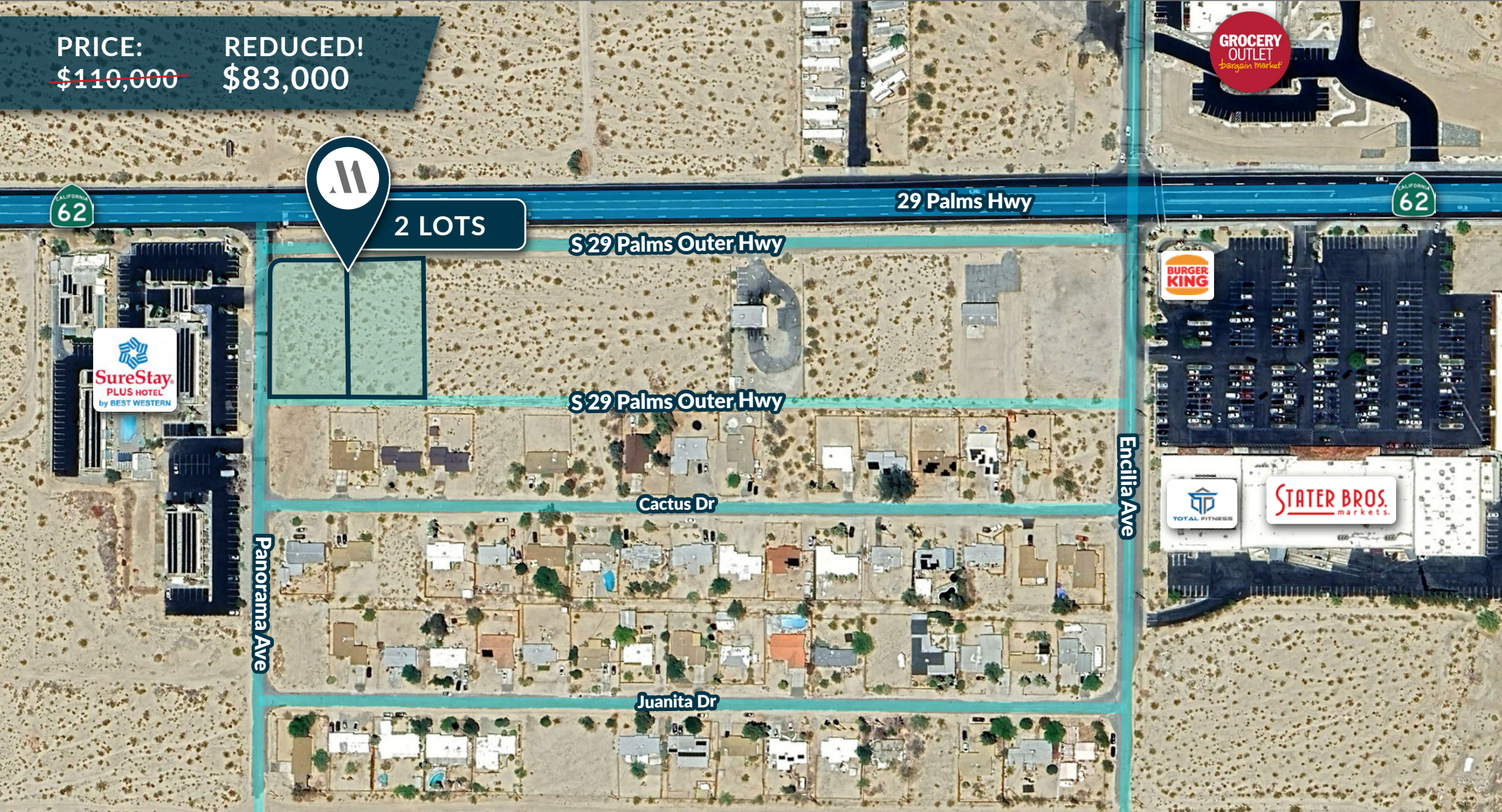


FOR SALE | 1.10 ACRES
29 Palms Outer Highway and Panorama Avenue
Twentynine Palms, CA 92277



PRICE: ~~\$110,000~~
REDUCED!
\$83,000



KATE RUST
Partner
DRE# 01267678
kate@meadecommercial.com
760-409-1532

DANYELL MEADE
Vice President
DRE# 02056792
dmeade@meadecommercial.com
760-899-8980

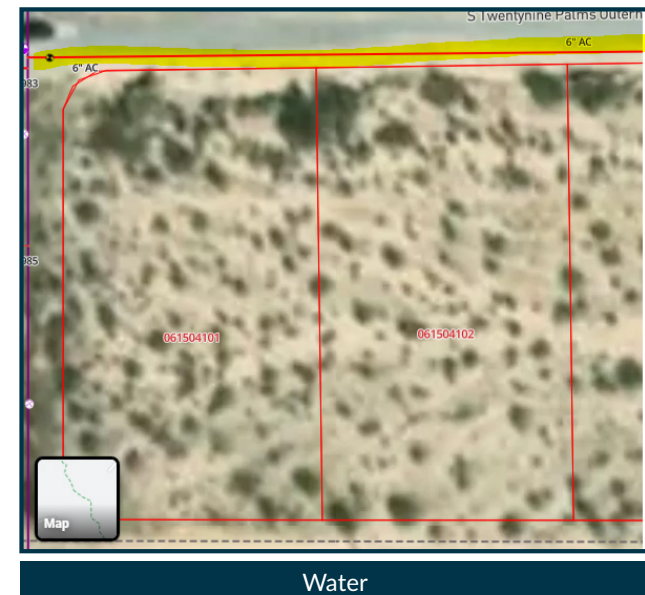
72100 Magnesia Falls Drive, Suite 2, Rancho Mirage, CA 92270
meadecommercial.com | CA DRE Lic.# 02439728

- Price: ~~\$110,000~~ Reduced! **\$83,000**
- City: Twentynine Palms, CA 92277
- Cross Streets: S. 29 Palms Hwy and Panorama Ave
- County: San Bernardino County
- APN: 0615-041-01-0000 and 0615-041-02-0000
- Fee Land
- Lot size: 1.10 AC/ 48,074 SF
- Zoned CG-General Commercial:
The CG land use serves as the City's primary commercial designation, allowing a broad range of commercial, retail, professional office and service-oriented businesses, including supermarkets, restaurants, hotels/motels and specialty retail stores.

Some Permitted Uses:

- Art Galleries
- Art Supply Store
- Congregate Care serving 7 or more people
- Transitional Housing
- Multi and Single Family Dwellings
- Utility and Service Uses and Structures

- Utilities located within close proximity of subject property
- Water: Twentynine Palms Water District; in front of property on 29 Palms Outer Highway
- Sewer: Septic
- Electric: Southern California Edison
- Cross Streets: 29 Palms Outer Highway and Panorama Ave.
- Close Proximity to Dining, Hotels/Motels, Schools, Library, Shopping and Fire Department



IMAGES

1.10 Acres | 29 Palms Outer Highway and Panorama Avenue
Twentynine Palms, CA 92277



KATE RUST
kate@meadecommercial.com
760-409-1532

DANYELL MEADE
dmeade@meadecommercial.com
760-899-8980

© MEADE COMMERCIAL, INC. | 2026

*Information has been secured from sources we believe to be reliable, however, Meade Commercial cannot guarantee its accuracy.

TWENTYNINE PALMS:

The City of Twentynine Palms is the gateway to Joshua Tree National Park Headquarters (nearly 800,000 acres) and Main Park Entrance (the North Entrance) and proud host of the Marine Corps Air Ground Combat Center, the world's largest Marine Corps training base. The City is renowned for its world-class murals and artists, supportive business climate, pristine air, beautiful natural surroundings, desert and mountain vistas, and friendly family lifestyle.

The City of Twentynine Palms was incorporated on November 23, 1987. Situated in the Morongo Basin area of San Bernardino County, about 140 miles east of Los Angeles and 50 miles northeast of Palm Springs, the City encompasses 58 square miles and has a population of approximately 30,000 residents.



DEVELOPMENT IN TWENTYNINE PALMS

- Drive-in Movie (reopened)
- City Pool (reopened)
- 2 New Car Washes (approved)
- 1 New Restaurant (approved)
- 4 New Hotels
 - 1 Luxury Hotel designed with shipping containers (Opened June 9, 2025)
 - Luxury Campground (in planning)
 - Old Adobe Hotel (approved)
 - Home2 Suites (in planning)

DEMOGRAPHICS

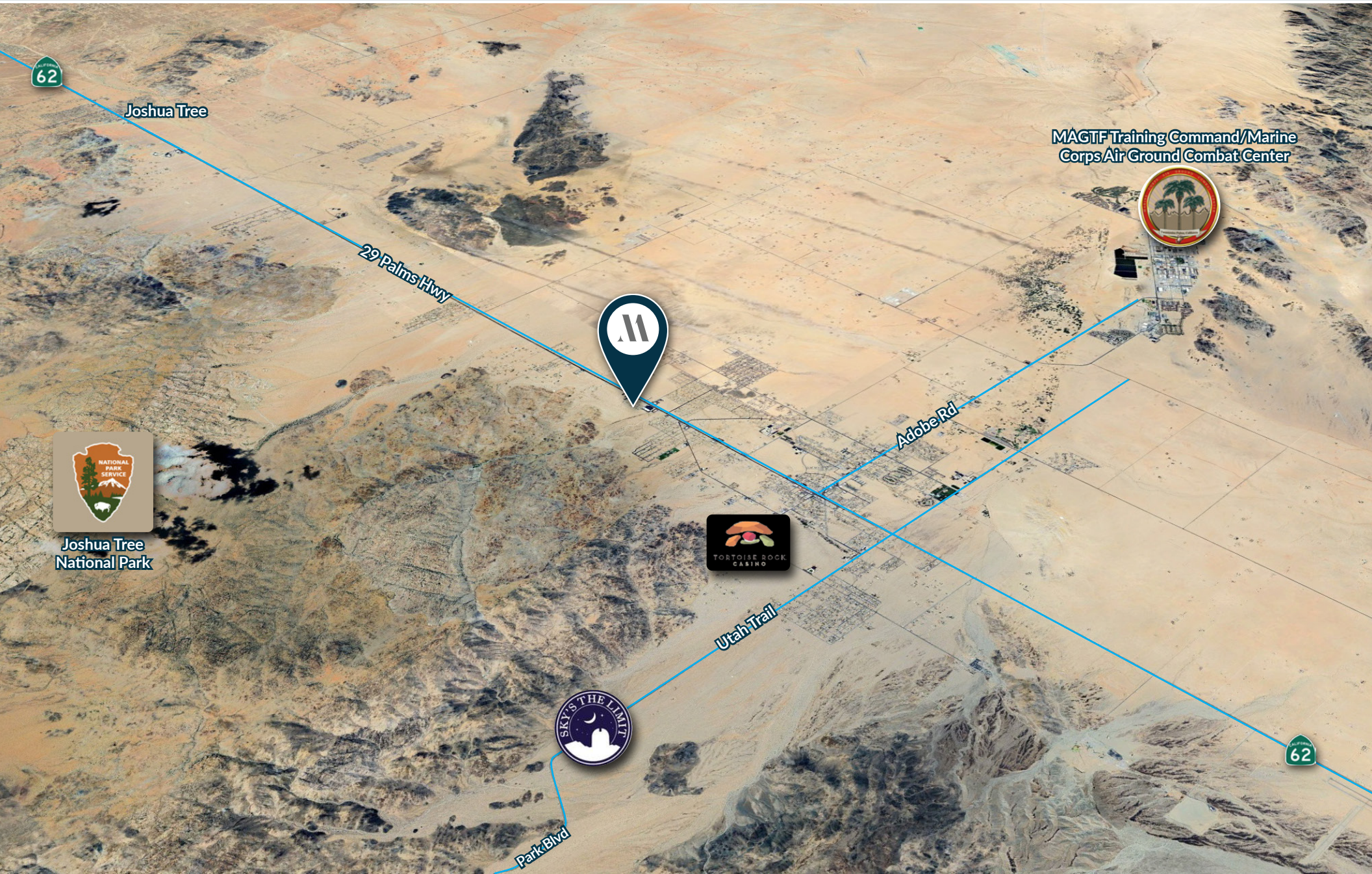
1.10 Acres | 29 Palms Outer Highway and Panorama Avenue
Twentynine Palms, CA 92277



DEMOGRAPHICS	1-mile	3-mile
Population	3,154	11,843
Households	1,241	4,807
Median Age	34.20	33
Median Household Income	\$58,239	\$51,320
Daytime Employees	433	2,856
2025 Average Daily Traffic (ADT)	29 Palms Hwy and Mariposa Ave: 15,421 ADT	

AERIAL MAP

1.10 Acres | 29 Palms Outer Highway and Panorama Avenue
Twentynine Palms, CA 92277



Joshua Tree
National Park



TORTOISE ROCK
CASINO



MAGTF Training Command/Marine
Corps Air Ground Combat Center

PLAT MAP

1.10 Acres | 29 Palms Outer Highway and Panorama Avenue
Twentynine Palms, CA 92277

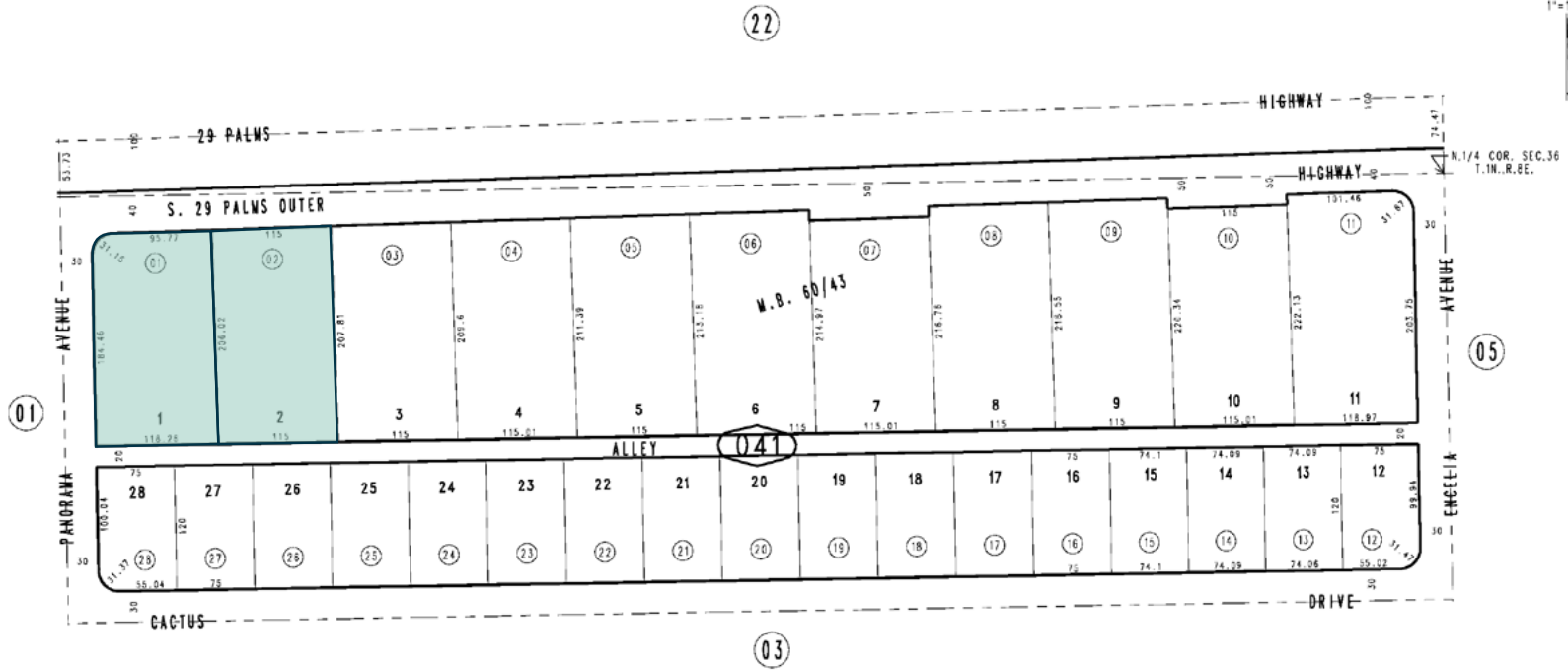
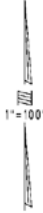
APN: 0615-041-01-0000 AND 0615-041-02-0000

THIS MAP IS FOR THE PURPOSE
OF AD VALOREM TAXATION ONLY.

Pin. Tract No. 4954, M.B. 60/43

City of Twentynine Palms
Tax Rate Area
19001

0615 - 04



February 2005

Pin. N.W.1/4, Sec. 36
T.1N., R.8E.

Assessor's Map
Book 0615 Page 04
San Bernardino County

REVISED

YOUR ADVISORS



KATE RUST

Partner

DRE# 01267678

kate@meadecommercial.com

760-409-1532



DANYELL MEADE

Vice President

DRE# 02056792

dmeade@meadecommercial.com

760-899-8980



DISCLAIMER

This Memorandum contains select information pertaining to the Property and the Owner, and does not purport to be all-inclusive or contain all or part of the information which prospective investors may require to evaluate a purchase of the Property. The information contained in this Memorandum has been obtained from sources believed to be reliable, but has not been verified for accuracy, completeness, or fitness for any particular purpose. All information is presented “as is” without representation or warranty of any kind. Such information includes estimates based on forward-looking assumptions relating to the general economy, market conditions, competition and other factors which are subject to uncertainty and may not represent the current or future performance of the Property. All references to acreages, square footages, and other measurements are approximations. This Memorandum describes certain documents, including leases and other materials, in summary form. These summaries may not be complete nor accurate descriptions of the full agreements referenced. Additional information and an opportunity to inspect the Property may be made available to qualified prospective purchasers. You are advised to independently verify the accuracy and completeness of all summaries and information contained herein, to consult with independent legal and financial advisors, and carefully investigate the economics of this transaction and Property’s suitability for your needs. ANY RELIANCE ON THE CONTENT OF THIS MEMORANDUM IS SOLELY AT YOUR OWN RISK.

The Owner expressly reserves the right, at its sole discretion, to reject any or all expressions of interest or offers to purchase the Property, and/or to terminate discussions at any time with or without notice to you. All offers, counteroffers, and negotiations shall be non-binding and neither Meade Commercial, Inc. nor the Owner shall have any legal commitment or obligation except as set forth in a fully executed, definitive purchase and sale agreement delivered by the Owner.

COPYRIGHT NOTICE

© 2026 Meade Commercial, Inc. All Rights Reserved.

Meade Commercial, Inc. Broker Lic. 02439728

72100 Magnesia Falls Drive, Suite 2, Rancho Mirage, CA 92270

Phone Number: 760-837-1880 | meadecommercial.com