

19238 EUREKA ROAD  
SOUTHGATE, MICHIGAN

RETAIL FOR LEASE  
2,000 – 4,000 Square Feet

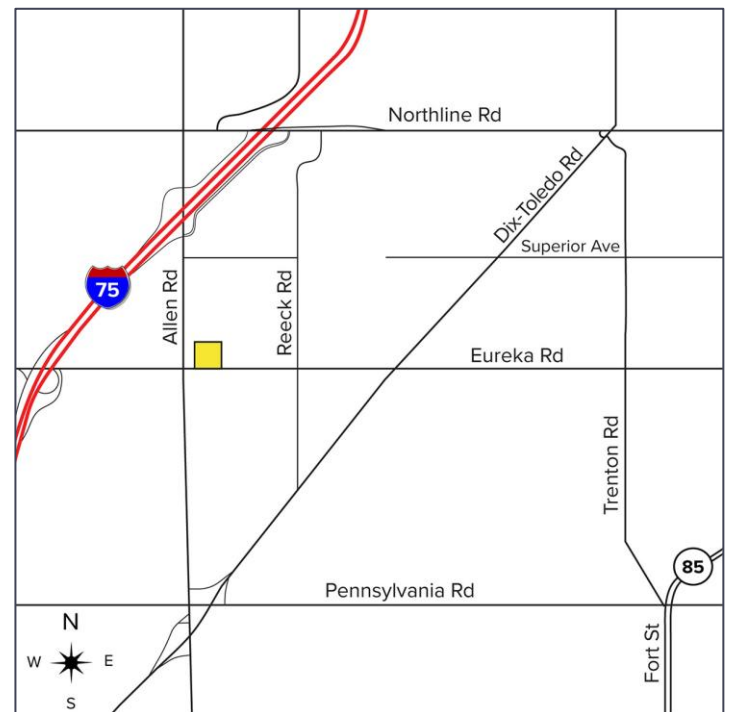


**SIGNATURE  
ASSOCIATES**  
KNOW SIGNATURE | KNOW RESULTS



## PROPERTY FEATURES

- 2,000 – 4,000 square feet available
- Recently updated freestanding building available for office or retail use
- Corner location on heavily trafficked Eureka Road
- Adjacent land also available for expansion
- 25 parking spaces
- Lease Rate: \$15.00/sq. ft. NNN



For more information, please contact:

**JUSTIN GAFFREY**  
(248) 799 3143  
jgaffrey@signatureassociates.com

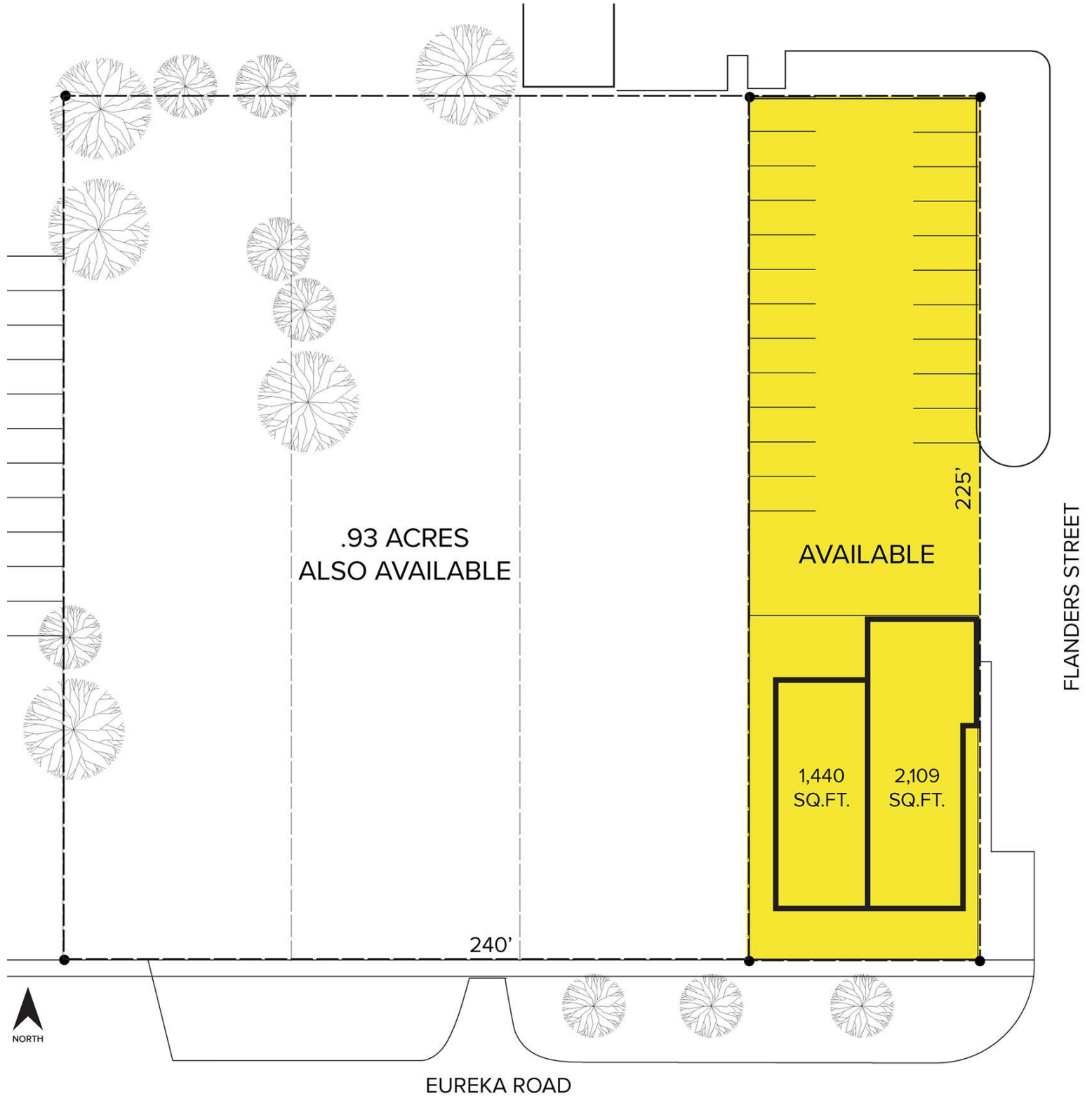
**SIGNATURE ASSOCIATES**  
One Towne Square, Suite 1200  
Southfield, MI 48076  
www.signatureassociates.com

# 19238 Eureka Road – Southgate, Michigan

Retail For Lease

2,000 - 4,000  
Square Feet  
AVAILABLE

## Site Plan



For more information, please contact:

**JUSTIN GAFFREY**  
(248) 799 3143  
jgaffrey@signatureassociates.com

**SIGNATURE ASSOCIATES**  
One Towne Square, Suite 1200  
Southfield, MI 48076  
www.signatureassociates.com

# 19238 Eureka Road – Southgate, Michigan

## Retail For Lease

2,000 - 4,000  
Square Feet  
AVAILABLE

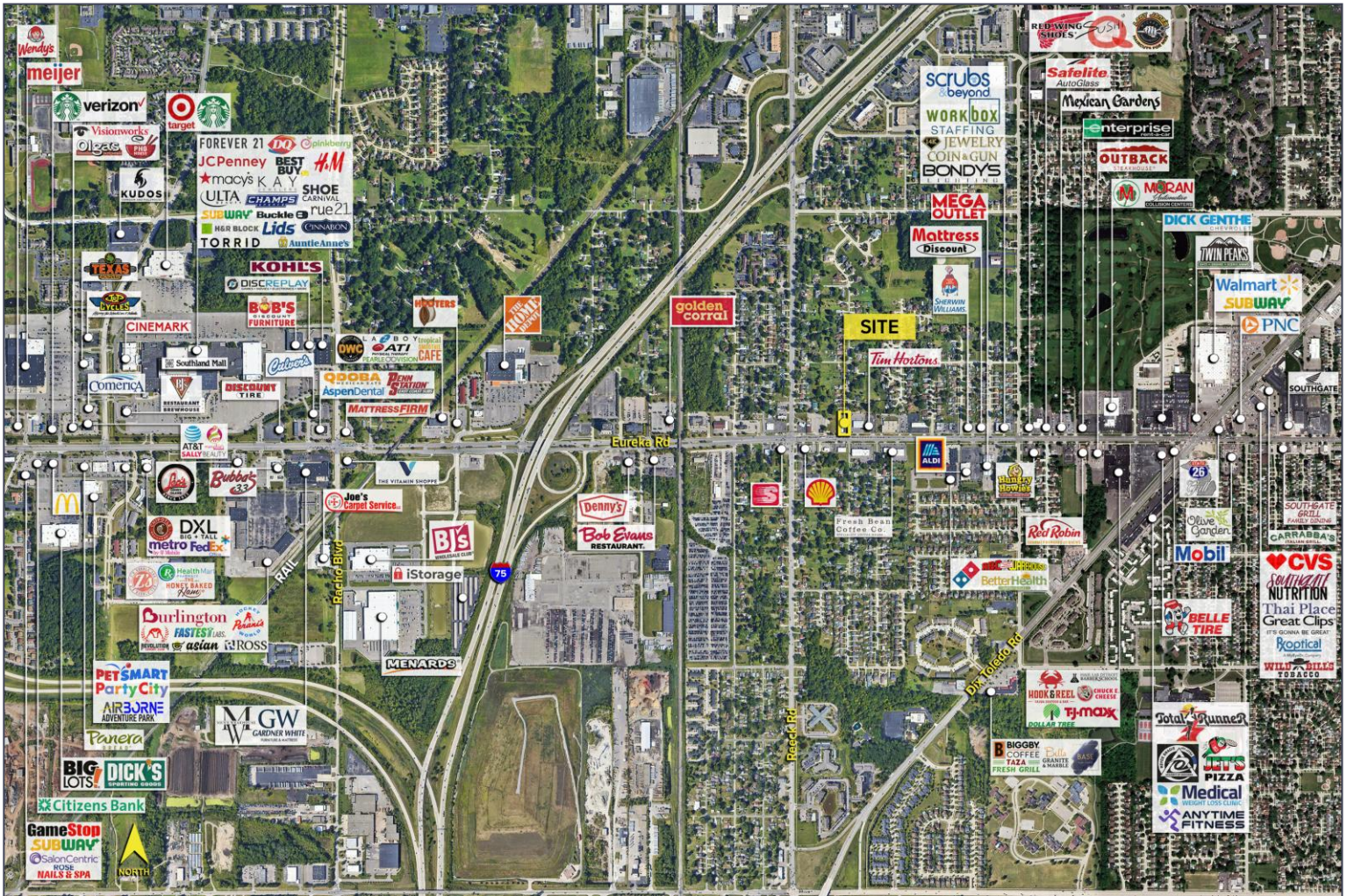


### DEMOGRAPHICS

	POPULATION	MED. HH INCOME
1 MILE	6,646	\$65,765
3 MILE	84,275	\$69,198
5 MILE	225,575	\$71,281

### TRAFFIC COUNTS (TWO-WAY)

18,157	Allen Rd. N of Eureka Rd.
18,696	Allen Rd. S of Eureka Rd.
25,438	Eureka Rd. E of Allen Rd.
25,988	Eureka Rd. W of Allen Rd.



For more information, please contact:

**JUSTIN GAFFREY**  
(248) 799 3143  
jgaffrey@signatureassociates.com

**SIGNATURE ASSOCIATES**  
One Towne Square, Suite 1200  
Southfield, MI 48076  
www.signatureassociates.com