

1 TREVERIS STREET, LONDON SE1

LONDON,



GRYPHON
PROPERTY PARTNERS



DESCRIPTION

Situated on the ground floor of 1 Treveris Street, this bright, fully furnished office offers 804 sq ft of well-presented workspace in the heart of Southwark. Large windows flood the space with natural light, creating an inviting and productive environment ideally suited to creative, professional and growing businesses. Thoughtfully configured, the office includes a private meeting room, fitted kitchenette and demised WC, alongside flexible open-plan workspace ready for immediate occupation. Contemporary furnishings and a modern finish allow occupiers to move straight in with minimal setup required

ACCOMMODATION

FLOOR

Ground Floor Unit 1 - Available

AREA

804 sq ft

TOTAL

Floor area subject to measurement

804 sq ft

LOCATION

Located moments from Southwark and Borough stations, the property benefits from excellent transport connectivity alongside easy access to Bankside, Waterloo and London Bridge. A wide range of cafes, restaurants and local amenities are all within easy walking distance.

Holborn (6 mins walk)

Covent Garden (7 mins walk)

Temple (11 mins walk)

SPECIFICATION/AMENITIES

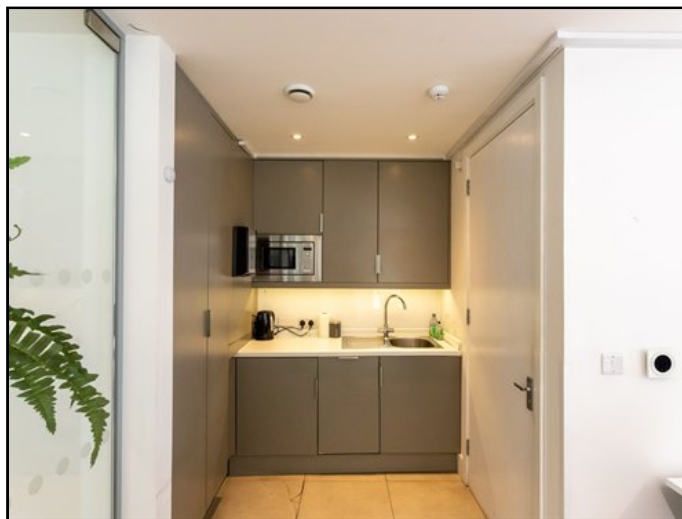
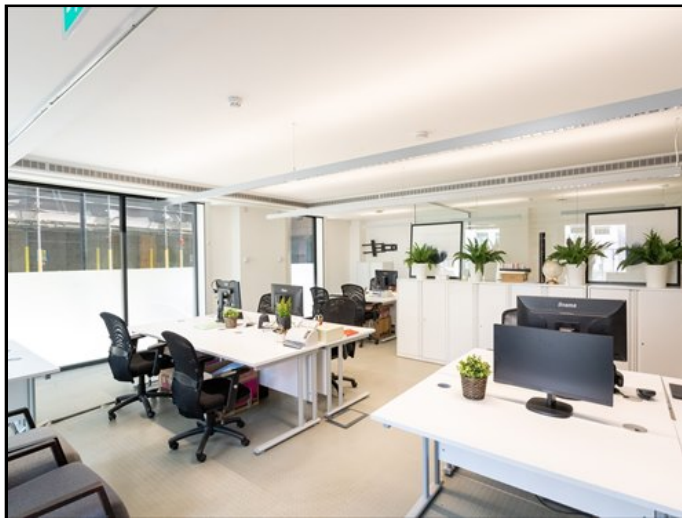
- Fully fitted
- Self contained unit
- Demised WC
- Kitchenette
- Private meeting room
- Excellent natural light
- Excellent transport Links

I TREVERIS STREET, LONDON SE1

LONDON,



GRYPHON
PROPERTY PARTNERS

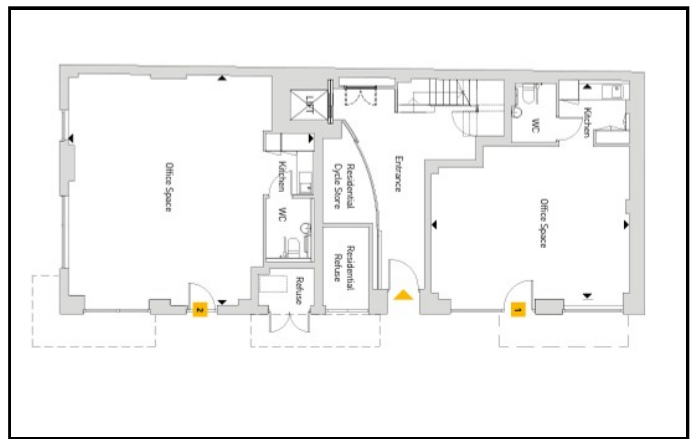
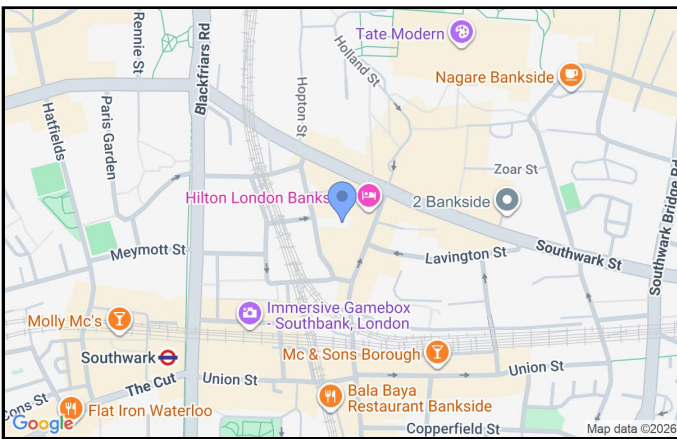


I TREVERIS STREET, LONDON SE1

LONDON,



GRYPHON
PROPERTY PARTNERS



TERMS

LEASE

Flexible by arrangement

RENT

£42.50 per sq ft

RATES

£12.90 per sq ft

SERVICE CHARGE

£2.00 per sq ft

VAT

Elected

VIEWING

Viewing strictly by prior appointment with joint sole agents
Gryphon/Workplace Co

COLIN HARGREAVES

07778 164159

colin@gryphon.uk.com

Subject to Contract

Gryphon Property Partners for themselves and for the vendors or lessors of this property whose agents they are, give notice that:- a. the particulars are set out as a general outline only for guidance and do not constitute, nor constitute part of, an offer or contract; b. all descriptions, dimensions, references to condition and necessary permissions for use and occupation, and other details are believed to be correct, but any intending purchasers, tenants or third parties should not rely on them as statements or representations of fact but satisfy themselves that they are correct by inspection or otherwise; c. All properties are measured in accordance with the RICS property measurement, 1st Edition May 2015 (incorporating IPMS) unless designated NIA/GIA/GEA, in which case properties are measured in accordance with the RICS Code of Measuring Practice (6th Edition); d. Any images may be computer generated. Any photographs show only certain parts of the property as they appeared at the time they were taken. June 2026