

Kingsland 10

BUSINESS PARK

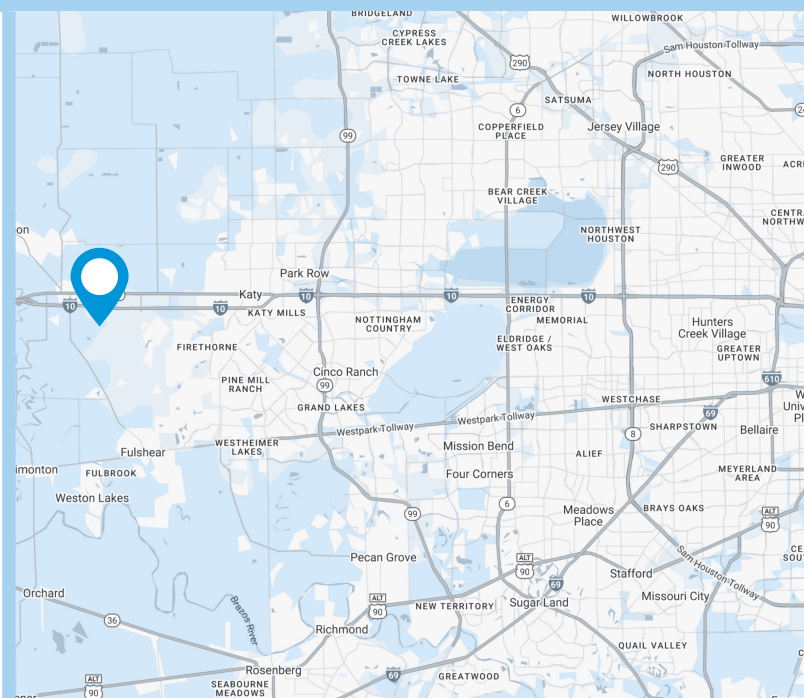
31067 KINGSLAND BLVD., BROOKSHIRE, TX 77423



Property Overview:

- New generation tilt-wall construction
- Rear-load configuration
- Located in the West Houston submarket
- Immediate access to I-10
- Incentives available through the city of Brookshire

141,330 SF AVAILABLE



GARRET GEACONE
garret.geacone@streamrealty.com
713.300.0232

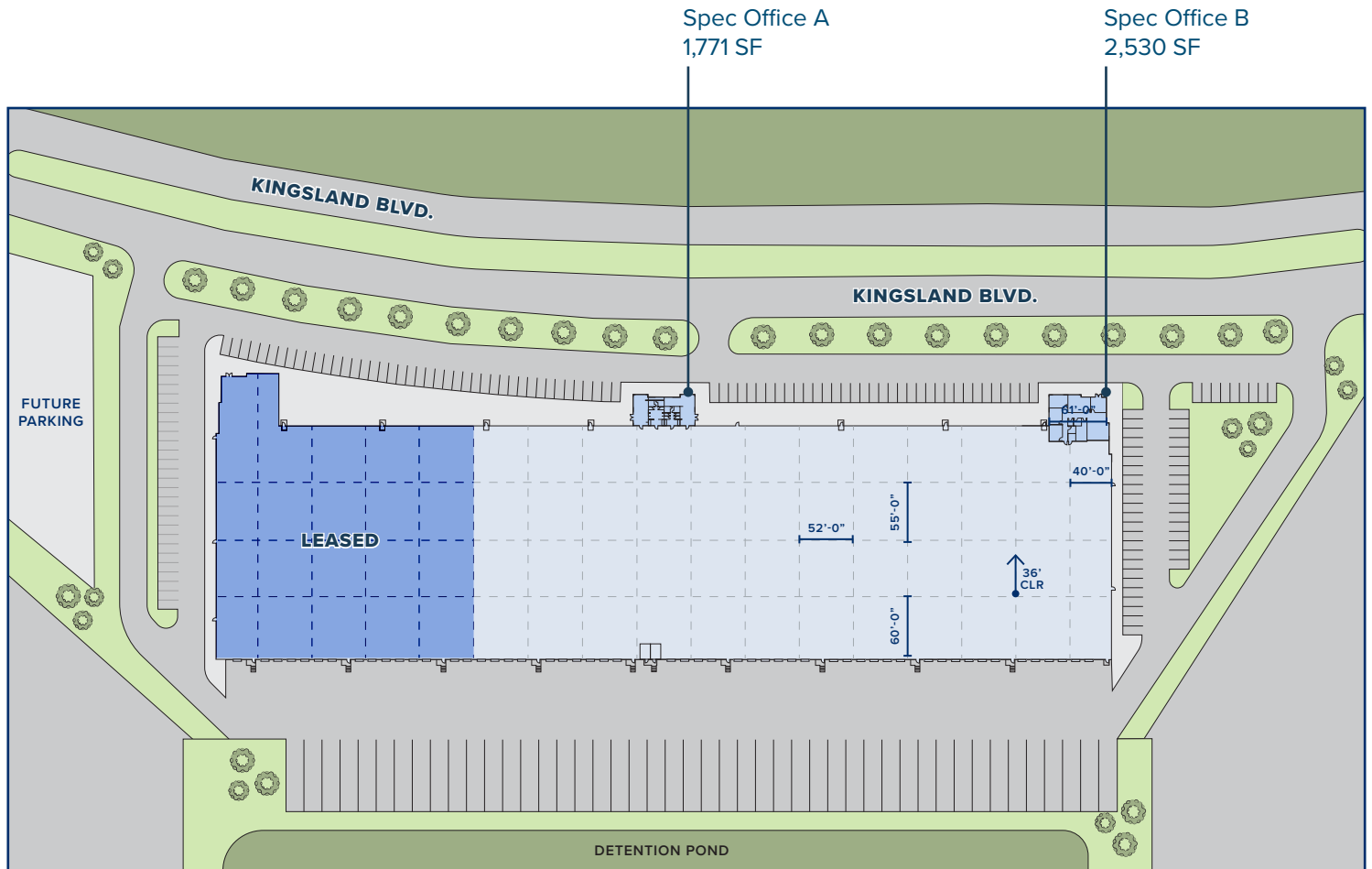
BOONE SMITH
boone.smith@streamrealty.com
713.300.0267



Kingsland 10

BUSINESS PARK

31067 KINGSLAND BLVD., BROOKSHIRE, TX 77423



Building Features :

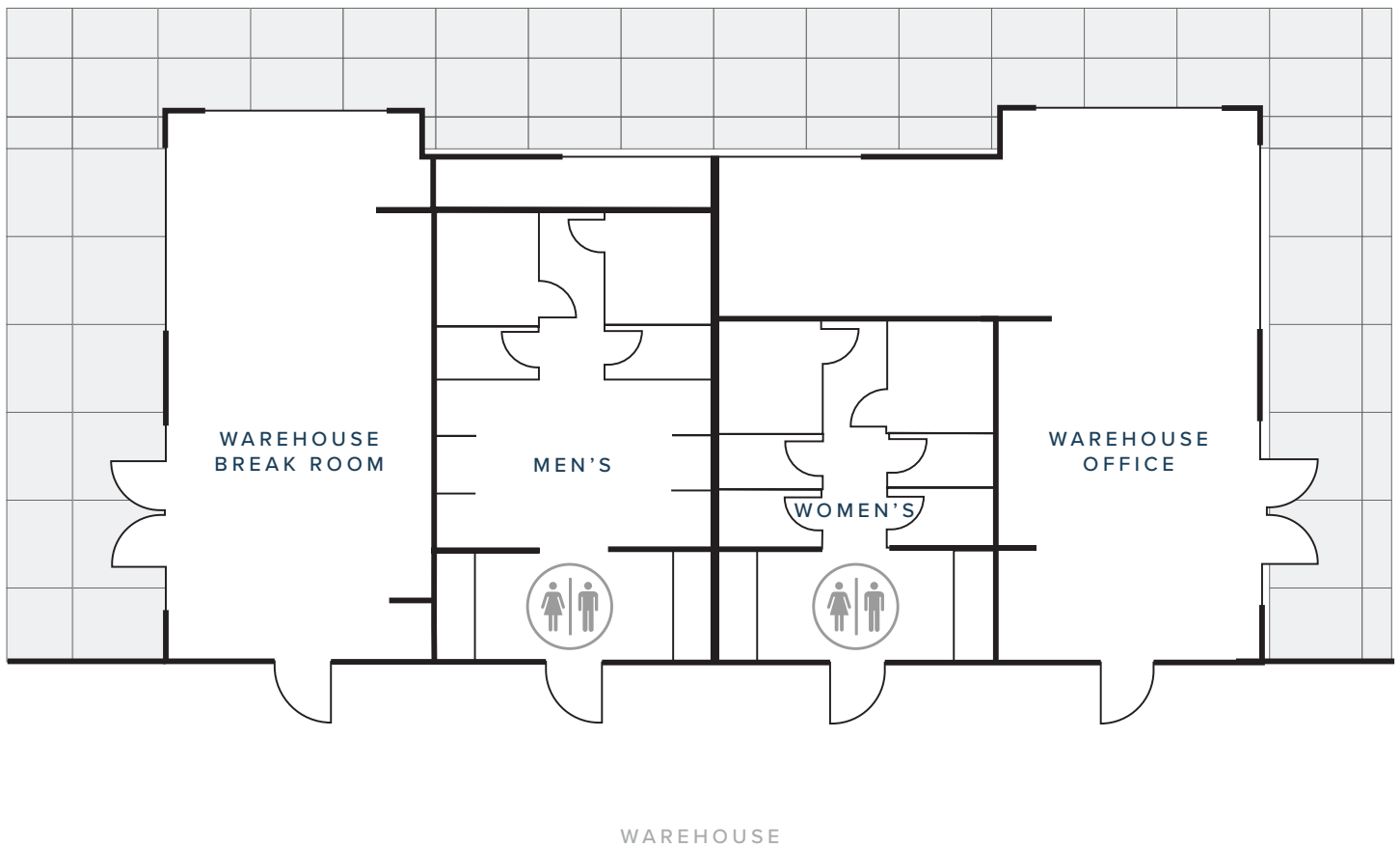
- 141,330 SF available
 - 137,029 SF warehouse
 - Two spec office suites totalling 4,301 SF
- 32' clear height
- 29 dock-high loading doors
- 3 oversized drive-in ramps
- 3 HVLS fans located in the speed bay
- 13 mechanical pit levelers
- ESFR sprinkler systems
- LED warehouse lights
- 52' x 50' column spacing
- 60' speed bay
- 210' building depth
- 44 trailer parking spaces
- 125 auto parking spaces

Kingsland 10

BUSINESS PARK

31067 KINGSLAND BLVD., BROOKSHIRE, TX 77423

Spec Office A
1,771 SF

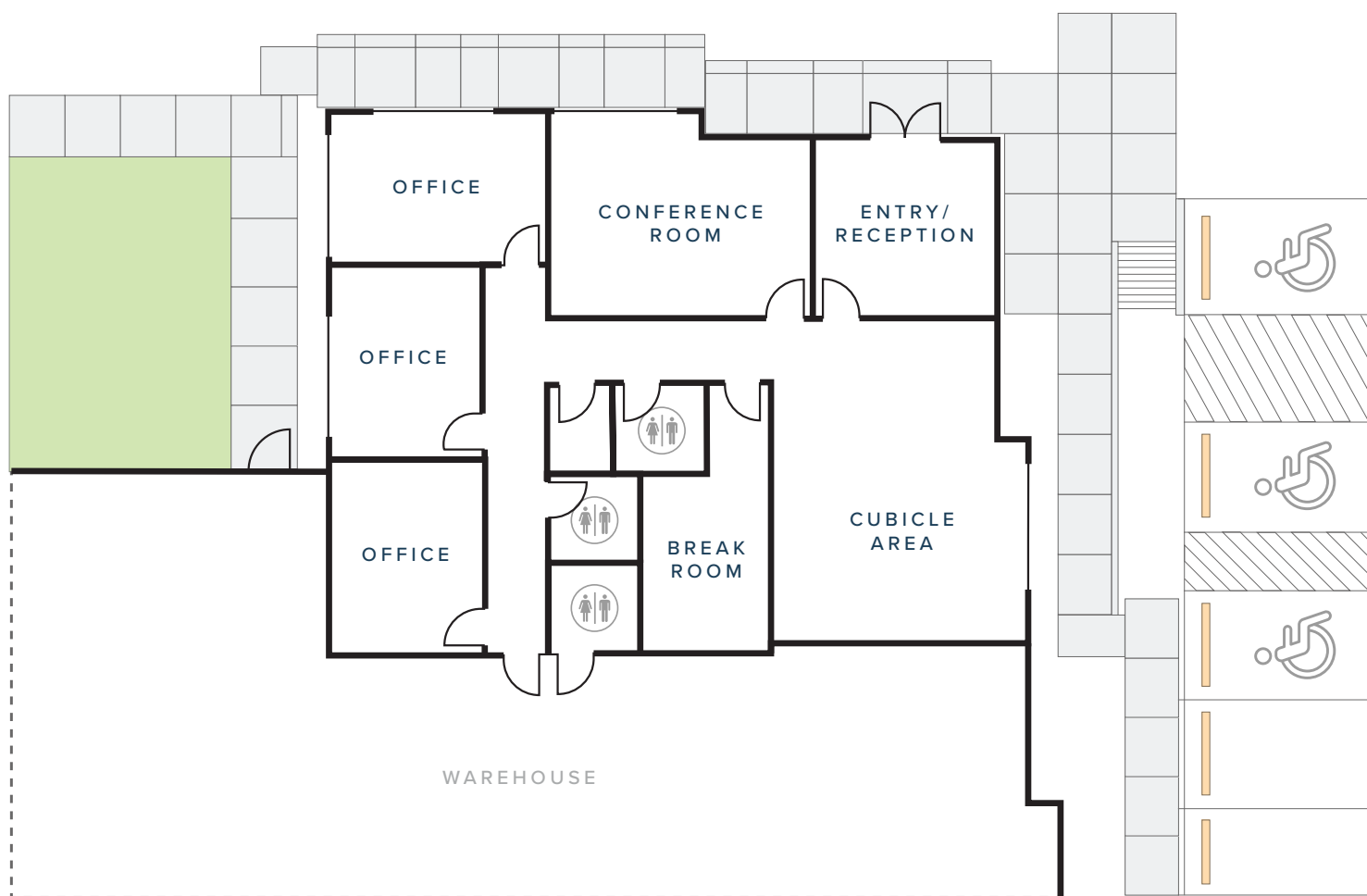


Kingsland 10

BUSINESS PARK

31067 KINGSLAND BLVD., BROOKSHIRE, TX 77423

Spec Office B
2,530 SF



Kingsland 10

BUSINESS PARK

31067 KINGSLAND BLVD., BROOKSHIRE, TX 77423

