



**MADE READY!**

**601 N Glenville Drive  
Richardson, Texas 75081**

**5,500 SF AVAILABLE**

**BUILDING SPECS**

- 34,559 SF total
- 5,500 SF available
- 12' clear height
- 2.92/1,000 SF parking ratio
- Built in 1981



This information is deemed reliable, however Holt Lunsford Commercial makes no guarantees, warranties or representation as to the completeness or accuracy thereof.

For more information, contact:

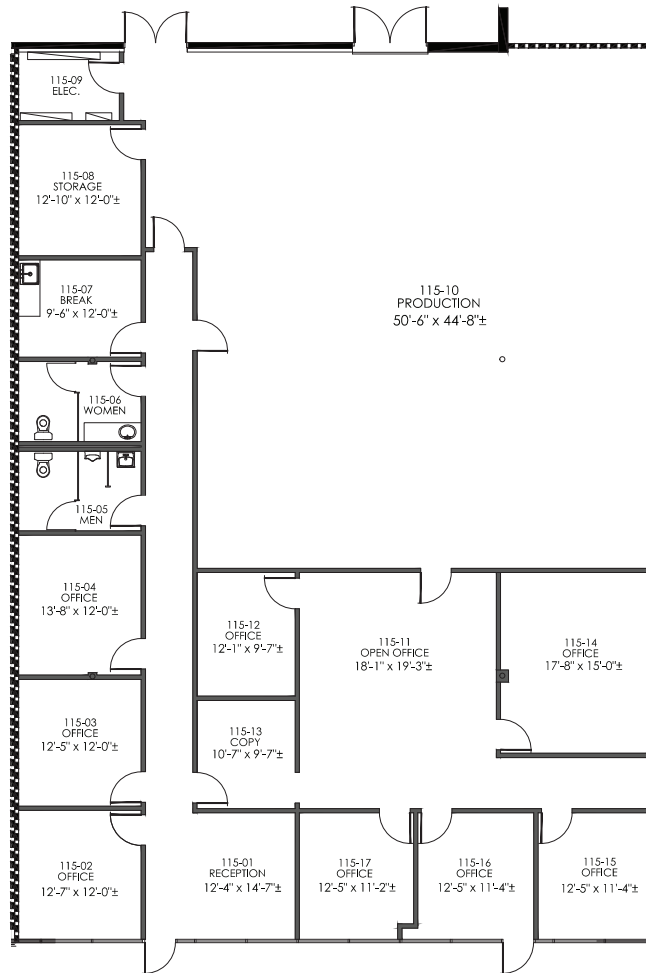
Josh Barnes, SIOR  
972.280.8253  
jbarnes@holtlunsford.com

Weston Porter  
214.442.8933  
wporter@holtlunsford.com



601 N Glenville Drive  
Richardson, Texas 75081

# FLOOR PLAN



## SUITE 115

- 5,500 SF available
- 2,000 SF production area
- 100% HVAC
- Grade-level loading

This information is deemed reliable, however Holt Lunsford Commercial makes no guarantees, warranties or representation as to the completeness or accuracy thereof.

For more information, contact:

Josh Barnes, SIOR  
972.280.8253  
jbarnes@holtlunsford.com

Weston Porter  
214.442.8933  
wporter@holtlunsford.com

# RICHARDSON BUSINESS CENTER



This information is deemed reliable, however Holt Lunsford Commercial makes no guarantees, warranties or representation as to the completeness or accuracy thereof.

**For more information, contact:**

Josh Barnes, SIOR  
972.280.8253  
jbarnes@holtlunsford.com

Weston Porter  
214.442.8933  
wporter@holtlunsford.com



